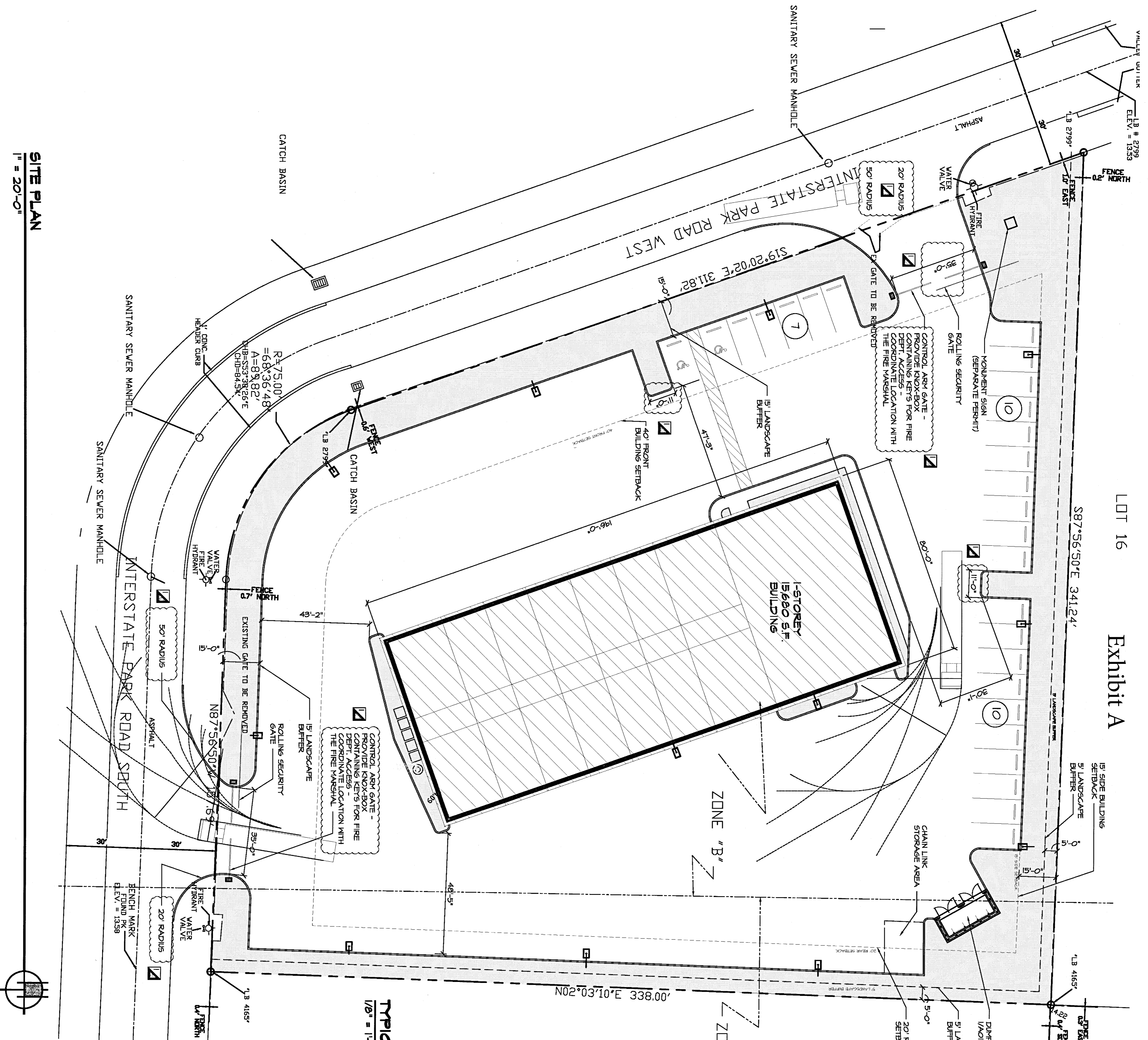


LOT 16 Exhibit A



**SITE PLAN NOTES:**

1. BASE INFORMATION FOR THIS PROJECT WAS OBTAINED FROM A SURVEY PREPARED BY DAILEY AND ASSOCIATED SURVEYING AND MAPPING.

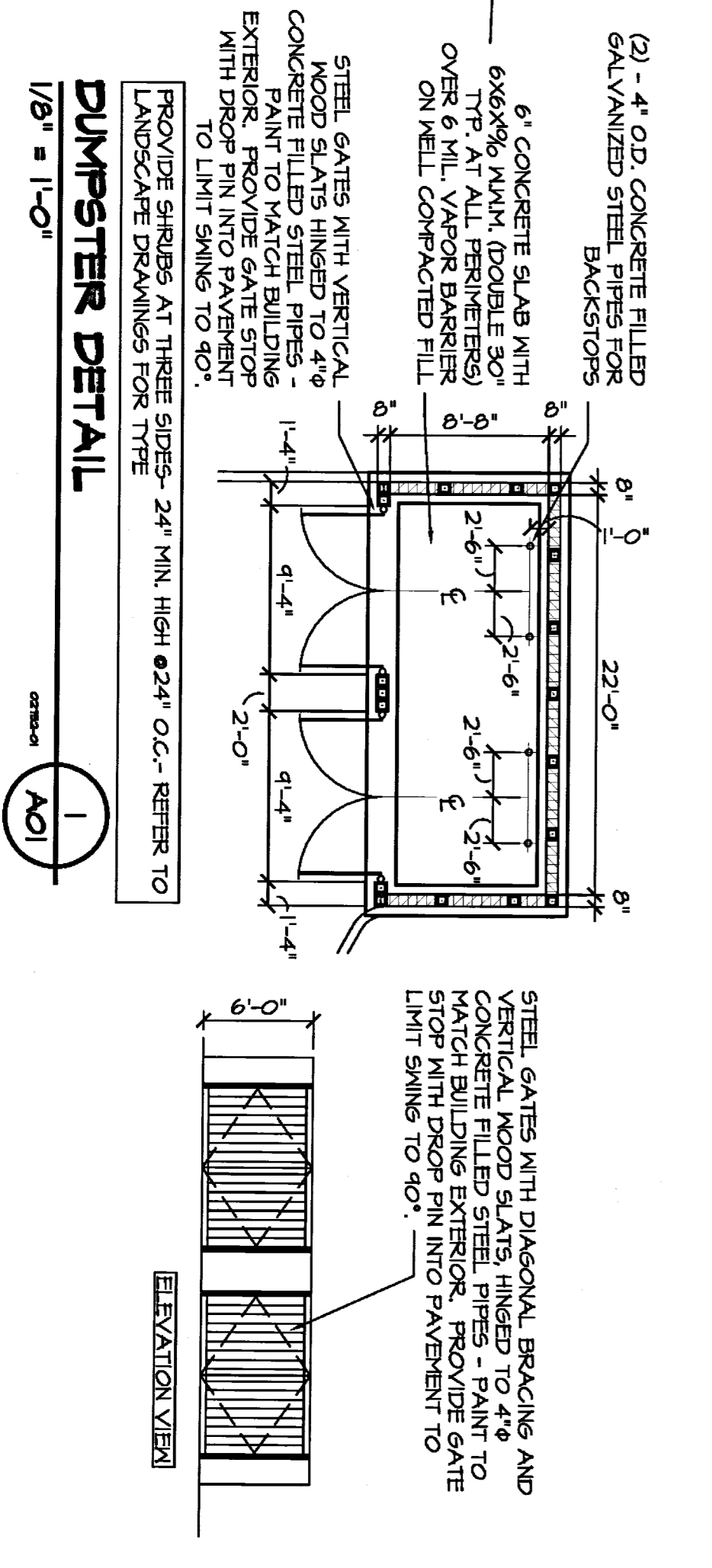
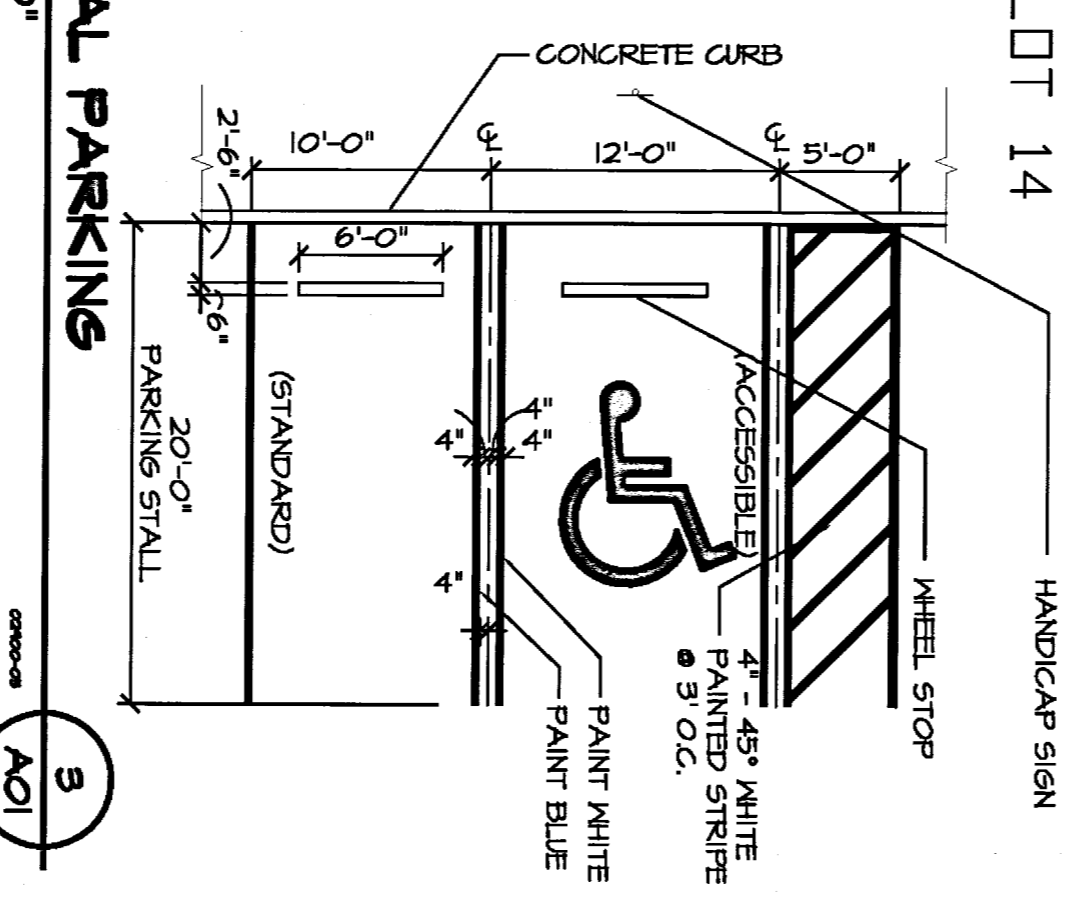
**SITE DATA:**

PETITION NUMBER: TRUCK REALTY GROUP  
 NAME OF PROJECT: WAREHOUSE WITH ACCESSORY OFFICE  
 PROPOSED USE: FUTURE LAND USE DESIGNATION: IND  
 ZONING DISTRICT: SECTION / TOWNSHIP / RANGE:  
 PROPERTY CONTROL NUMBER:  
 TOTAL SITE AREA: (42,496 S.F.) 2.123 ACRES  
 TOTAL GROSS FLOOR AREA: (4,320 S.F.) OFFICE  
 (15,680 S.F.) WAREHOUSE  
 (15,680 S.F.) TOTAL BUILDING  
 TOTAL BUILDING AREA RATIO: 17  
 TOTAL BUILDING COVERAGE: 80.3%  
 IMPERVIOUS AREA: 14,178  
 PAVEMENT / WALKS: 15,680 S.F.  
 FERVIOUS AREA: 16,246 S.F.  
 GREEN SPACE: 21'-4" (MAX 50')  
 BUILDING HEIGHT: 21'-4" (MAX 50')  
 NUMBER OF STORES: 1  
 PARKING REQUIRED: 1 PER 300 S.F. = 4320 S.F. = 15  
 OFFICE: 1 PER 1000 S.F. = 11280 S.F. = 12  
 WAREHOUSE: 1 PER 1000 S.F. = 11280 S.F. = 12  
 PROPOSED PARKING: 27 SPACES  
 ACCESSIBLE SPACES REQUIRED: 2 SPACES  
 ACCESSIBLE SPACES PROVIDED: 2 SPACES  
 (INCLUDED IN THE 27 REQUIRED SPACES)  
 LOADING REQUIRED (9'X5' MIN): 2 SPACES  
 LOADING PROVIDED: 2 SPACES

**PROPERTY DEVELOPMENT REGULATIONS:**

ZONING DISTRICT	MIN. LOT DIMENSIONS:			MAX. BLDG. COVERAGE:	MIN. SETBACKS:		
	SIZE:	WIDTH:	DEPTH:		FRONT:	SIDE:	REAR:
REQ. 1 ACRES	.45	45'	40'	45%	40'	15'	20'
PROP. 2.123 ACRES	.15	15'	80'-3"	15%	63'-11"	47'-9"	40'-4"

**TYPICAL PARKING**



**SITE PLAN**

1" = 20'-0"

JOB NO. 15-019  
 principal CHRIS HAIR  
 CH  
 date 04.19.16  
 title  
 A01

A Site Plan Approval for:  
**Truck Realty Group**  
 Lot 15 Interstate Industrial Park  
 Riviera Beach, Florida



**C.D. HAIR ARCHITECT**  
 6726 Remington Place  
 Lake Worth, FL  
**AR96135**