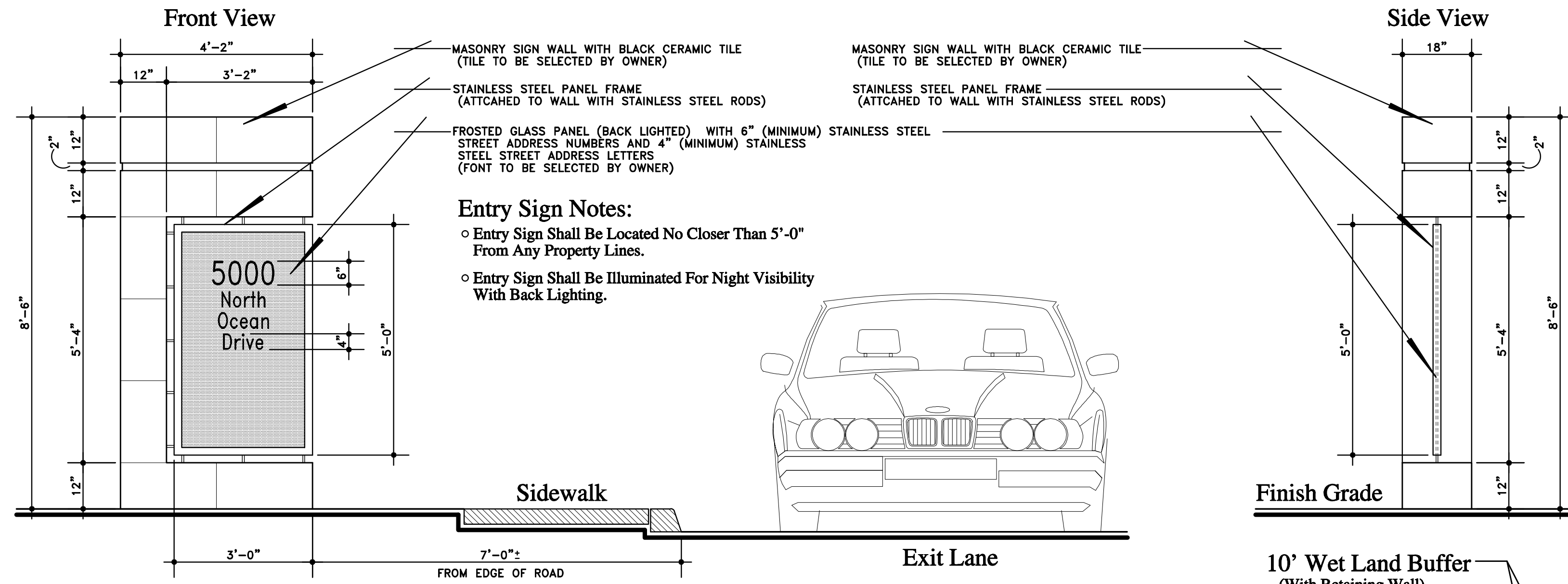


L a n d s c a p e A r r a n g e m e n t s I n t e r t e c t u r e P l a n n i n g

Ocean Drive

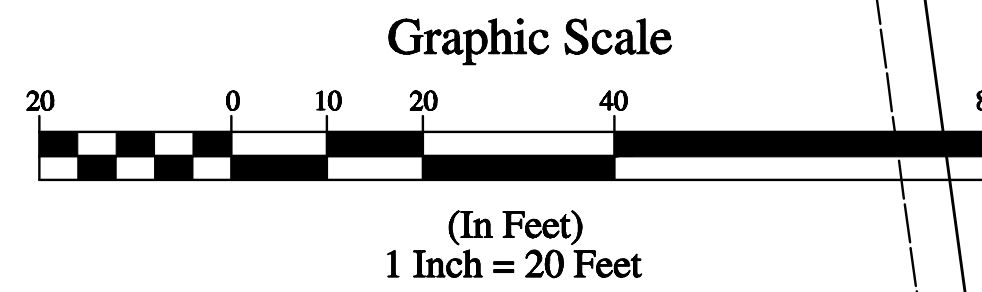
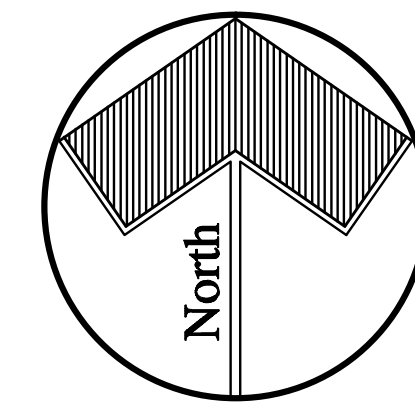


**101 · Entry Feature Elevations**

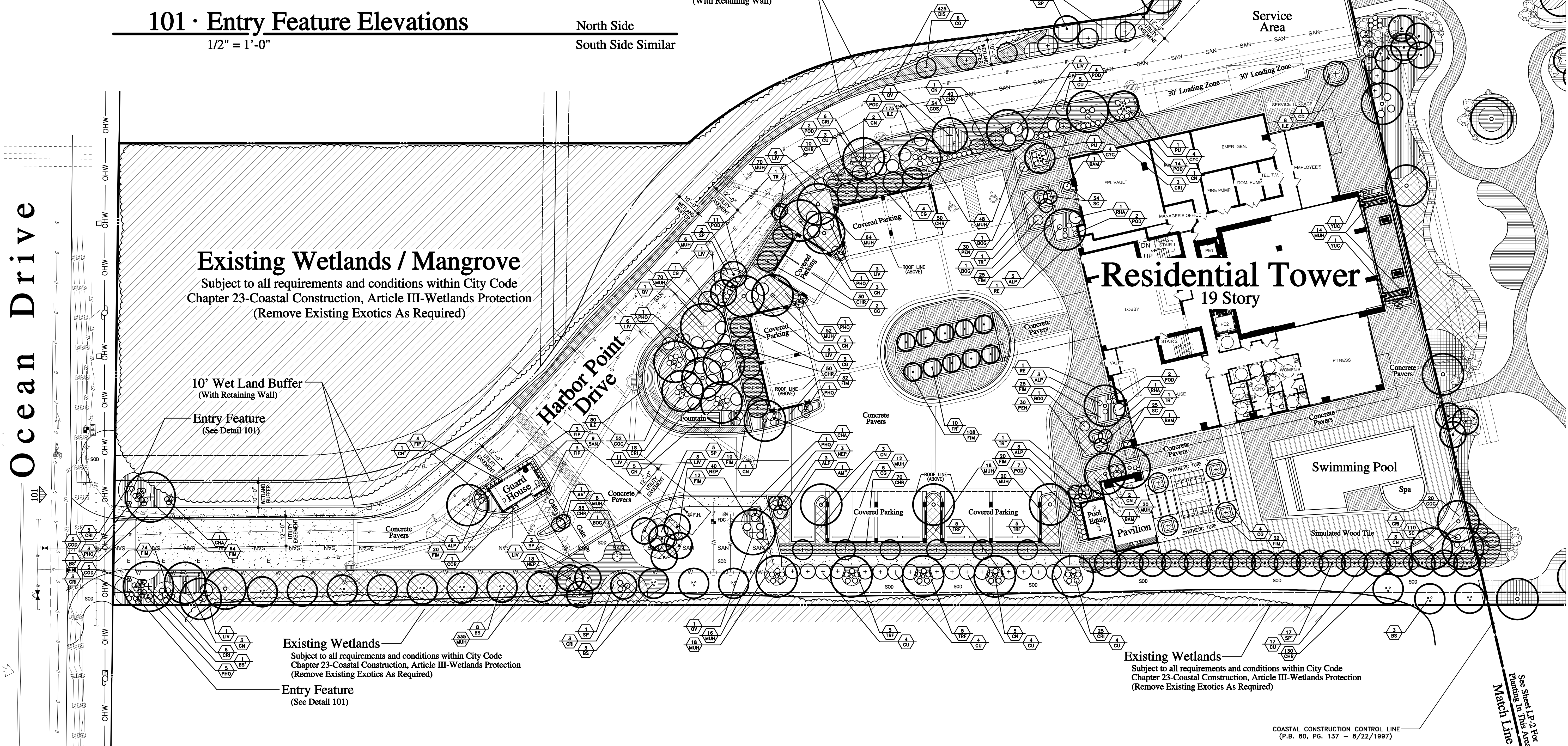
1/2" = 1'-0"

North Side

South Side Similar



COASTAL CONSTRUCTION CONTROL LINE  
(P.B. 80, PG. 137 - 8/22/1997)



Landscape Architecture  
Site Planning

**INTUITIVE IDG DESIGN GROUP**

4247 SW High Meadows Ave.  
Palm City, Florida 34990  
Phone.....772.220.9711  
Fax.....772.781.1040  
Email.....idg@bellsouth.net  
www.intuitiveidgdesigngroup.com

All Ideas, Designs, Arrangements And Plans Indicated Or Represented By This Drawing Are Owned By And The Property Of The Landscape Architect And Were Created, Embodied And Developed For Use On And In Connection With The Specified Project. None Of Such Ideas, Designs, Arrangements, Or Plans Shall Be Used By Or Disclosed To Any Person, Firm, Or Corporation For Any Purpose, whatsoever Without The Written Permission Of The Landscape Architect.

Michael N. Sapusk  
Cert. Number LA0000676  
License Number 2002-125-0072

**Landscape Plan**  
**Harbor Point Condominium**  
 5000 Ocean Drive · Riviera Beach, Florida

Date:  
August 7, 2015  
October 28, 2015  
December 17, 2015

Sheet:  
**LP-1**

Of: Four