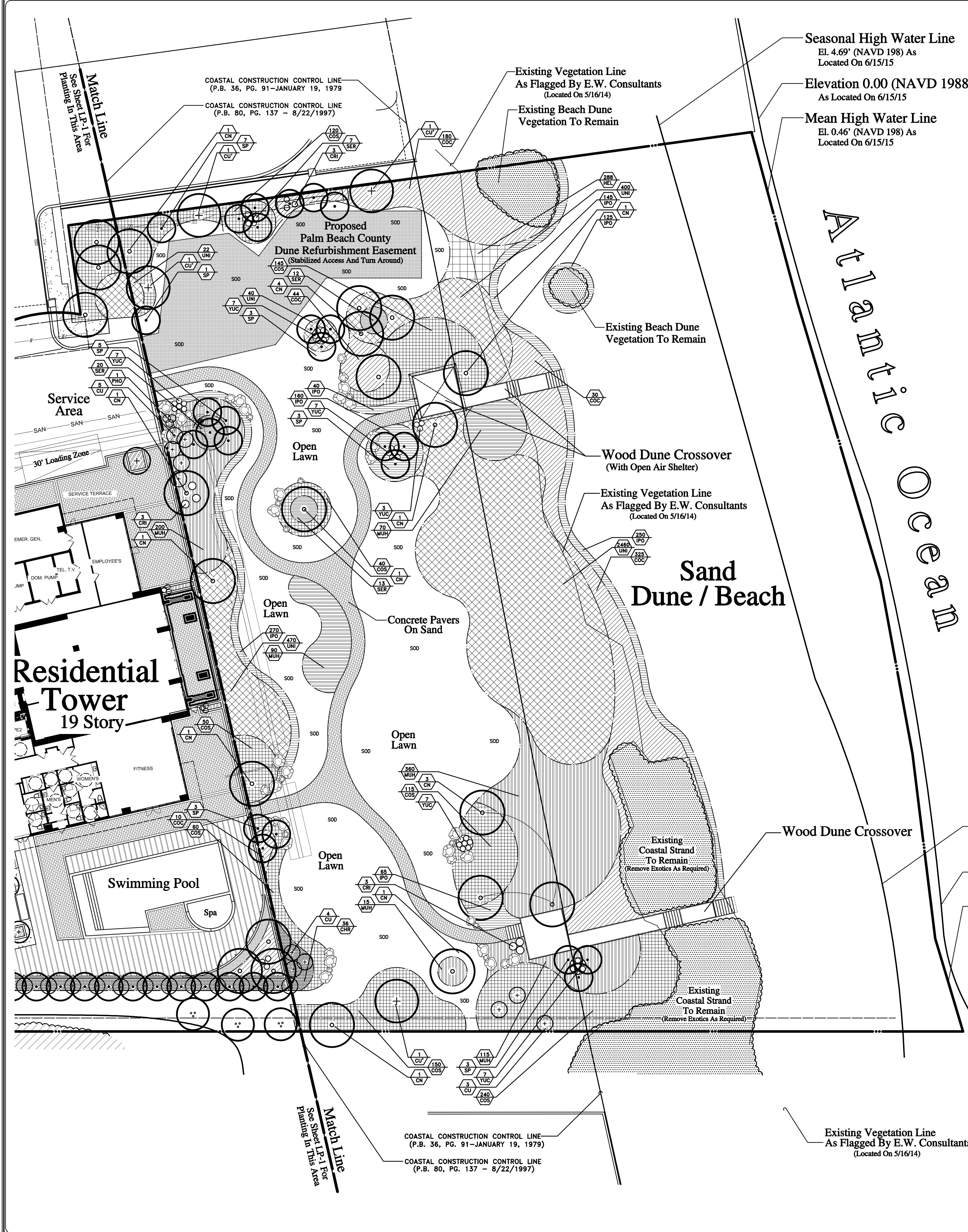
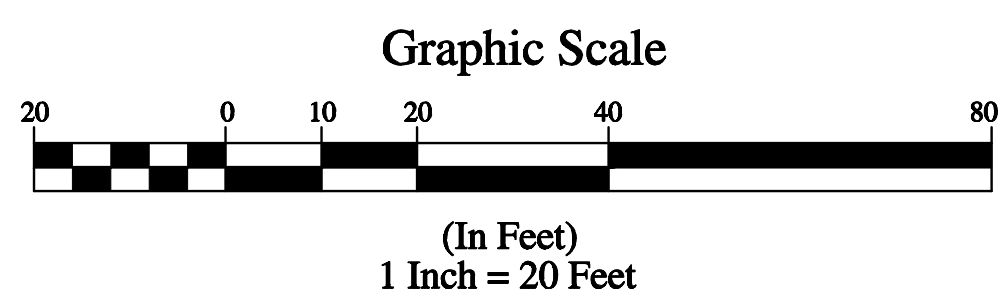
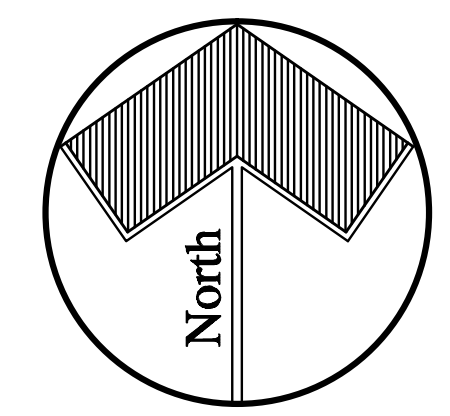


Landscape Architecture



### Harbor Point Plant List (Seaward of 1997 CCCL Only)

Key	Qty.	Scientific/Common Name	Ht.	Spr.	Remarks	Accent/ Shade	Ecological Significant	Native	Drought Tolerant	Salt Tolerant	
Trees And Palms	CN	16	COCOS NUCIFERA "GREEN MALAYAN" GREEN MALAYAN COCONUT PALM	8-12'	CLEAR WOOD	FLORIDA FANCY "STRAIGHT TRUNK" FULL DARK GREEN HEAD	N/A	Y	N	H	H
	CU	12	COCCOLOBA UVIFERA SEA GRAPE	10'	5'	5' CLEAR TRUNK - 1.5" DBH (MIN.) MATCHED SPECIMEN	ACCENT	Y	Y	H	H
	CU'	4	COCCOLOBA UVIFERA SEA GRAPE	14-16'	7-8'	6' CLEAR TRUNK - 2.5" DBH (MIN.) MATCHED SPECIMEN	SHADE	Y	Y	H	H
	SP	25	SABAL PALMETTO CABBAGE PALM	8-16'	CLEAR WOOD	FULL BOOTED TRUNK IN STAGGERED CLUSTERS	N/A	Y	Y	H	H
Shrubs And Groundcovers	CHR	36	CHRYSOBALANUS ICACO RED TIP COCOPLUM	24"	18"	INSTALL 30" O.C. FULL TO BASE 3 GALLON		Y	H	H	
	COC	589	COCCOLOBA UVIFERA SEA GRAPE	24"	24"	INSTALL 36" O.C. FULL 3 GALLON		Y	H	H	
	COS	920	CONOCARPUS ERECTUS "SERICEUS" SILVER BUTTWOOD	24"	18"	INSTALL 30" O.C. FULL TO BASE 3 GALLON		Y	H	H	
	CRI	9	CRINUM ASIATICUM QUEEN EMMA CRINUM	30"	30"	FULL 7 GALLON		N	M	M	
	HEL	288	HELIANTHUS DEBILIS BEACH SUNFLOWER	6"	10-12"	INSTALL 12" O.C. FULL 1 GALLON		Y	H	H	
	IPO	1055	IPOMOEA PES-CAPRAE RAILROAD VINE	6"	10-12"	INSTALL 18" O.C. FULL 1 GALLON		Y	H	H	
	MUH	850	MUHLENBERGIA CAPILLARIS MUHLY GRASS	30"	18"	INSTALL 36" O.C. FULL 3 GALLON		Y	H	H	
	PHO	1	PHOENIX ROEBELENI DWARF DATE PALM	4-5'	4-5'	TRIPLE HEAD SPECIMEN		N	H	L	
	SER	52	SERENOA REPENS SAW PALMETTO	24"	24"	INSTALL 36" O.C. FULL 3 GALLON		Y	H	H	
	UNI	3392	UNIOLA PANICULATA SEA OATS	12"	10-12"	INSTALL 12" O.C. 6" POTS		Y	H	H	
YUC	38	YUCCA ELEPHANTIPES SPINELESS YUCCA	48"	24"	FULL 7 GALLON MINIMUM		Y	H	M		
SOD	18500	PASPALUM VAGINATUM SEASHORE PASPALUM			SOLID SOD (VERIFY QUANTITY) INSTALL WITH STAGGERED JOINTS		Y	H	H		



Landscape Architecture  
Site Planning

**INTUITIVE**  
**IDG**  
DESIGN GROUP

4247 SW High Meadows Ave.  
Palm City, Florida 34990  
Phone: 772.220.9711  
Fax: 772.781.1040  
Email: idg@belcoast.net  
www.intuitivedesigngroup.com

All Ideas, Designs, Arrangements And Plans Indicated Or Represented By This Drawing Are Owned By And The Property Of The Landscape Architect And Were Created, Embodied And Developed For Use On And In Connection With The Specified Project. None Of Such Ideas, Designs, Arrangements, Or Plans Shall Be Used By Or Disclosed To Any Person, Firm, Or Corporation For Any Purpose Without The Written Permission Of The Landscape Architect.

Michael N. Sapusek  
Cert. Number LA0000676  
License Number 2002-125-0072

Landscape Plan

# Harbor Point Condominium

5000 Ocean Drive · Riviera Beach, Florida

Date:  
August 7, 2015  
October 28, 2015  
December 17, 2015

Sheet:  
**LP-2**  
Of: Four