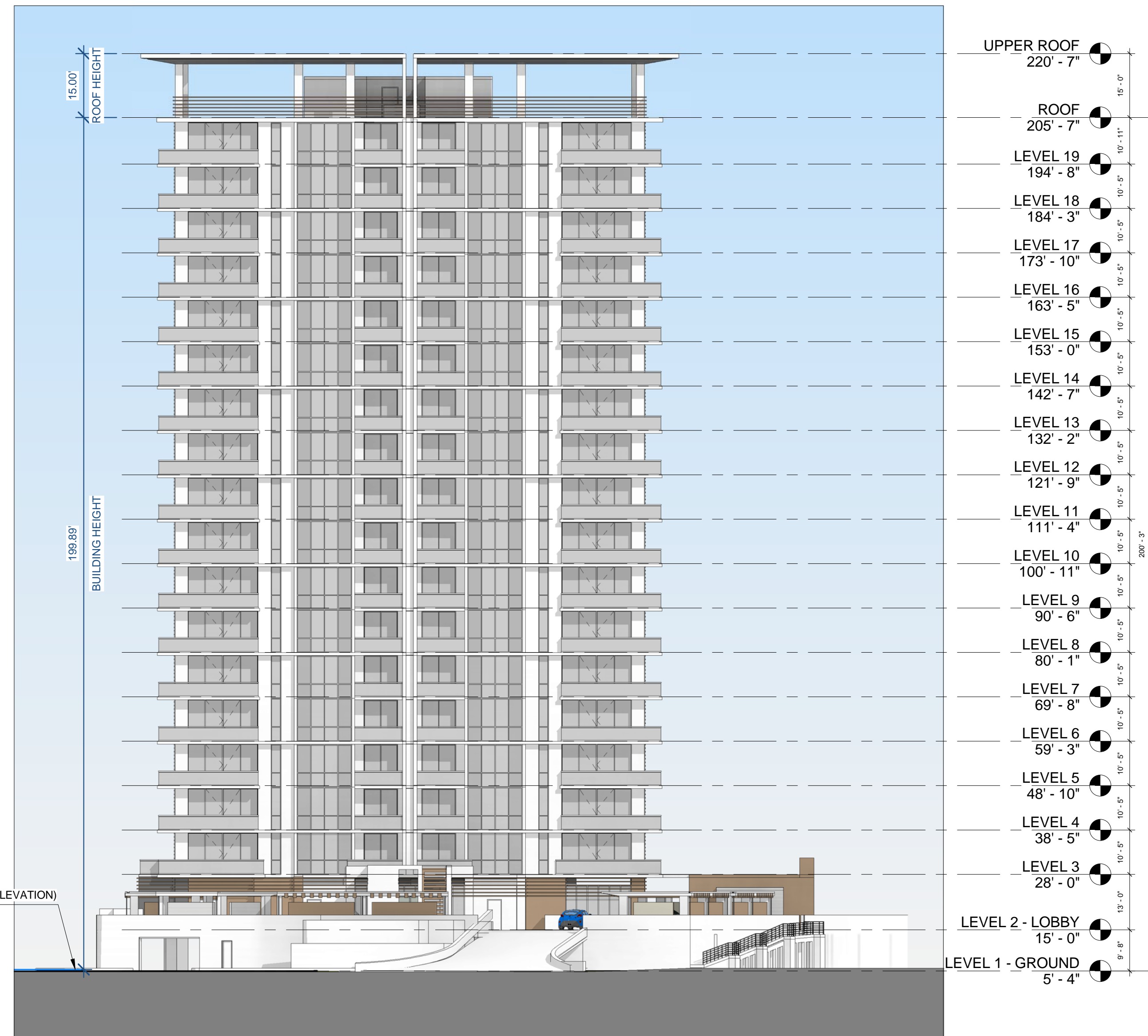


PER CORB SEC. 31-1: BASE ELEVATION FOR BUILDING HEIGHT = 5.69' NAVD
(4.19' AT CROWN OF ROAD + 18 INCHES ABOVE THE CROWN OF THE ROAD = 5.69')

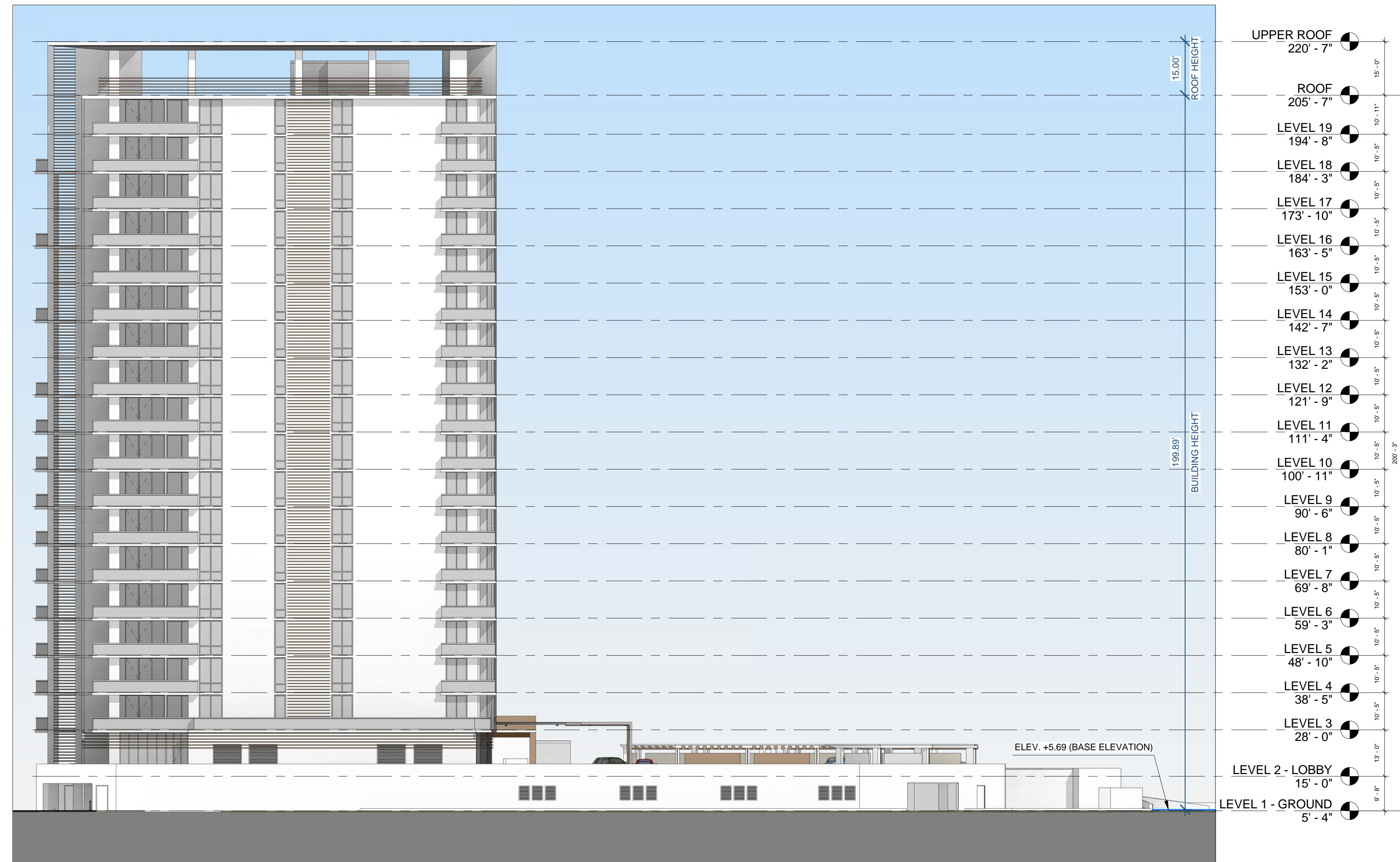
PER CORB SEC. 31-243(4): MAXIMUM BUILDING HEIGHT: 20 STORIES OR 200 FEET, EXCLUDING MECHANICAL FACILITIES, ORNAMENTAL TOWERS, ANTENNAS, AND SIMILAR NON-HABITABLE BUILDING ELEMENTS, WHICH SHALL NOT EXCEED 20 FEET IN ADDITIONAL HEIGHT.

MAX BUILDING HEIGHT = 200' ABOVE BASE ELEVATION (5.69') = 205.69'
PROVIDED BUILDING HEIGHT = 5.69' + 199.89' = 205.58'

MAX NON-HABITABLE ROOF HEIGHT = 20' IN ADDITIONAL HEIGHT
PROVIDED NON-HABITABLE ROOF HEIGHT = 15'



1 WEST ELEVATION
SCALE: 1" = 20'-0"



2 NORTH ELEVATION
SCALE: 1" = 20'-0"

*ALL ELEVATIONS ARE N.A.V.D

SITE PLAN RESUBMISSION | 12-17-2015

12/17/2015 12:41:27 PM



4942 LeJeune Road Suite 200
Orlando, Florida 32816
Tel. 305.663.8182 Fax 305.663.8882
Firm License Number: A40003360

BC ARCHITECTS 2015
ALL RIGHTS RESERVED

Harbor Point Condominium

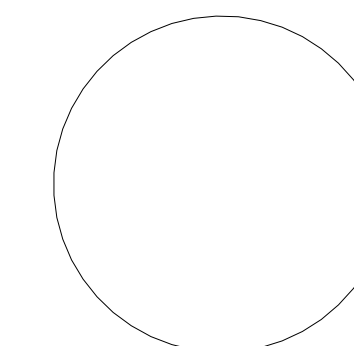
5000 N Ocean Drive, Riviera Beach, Florida

BCA PROJECT NUMBER: 1514.01

OWNER:
KT 5000 LLC

ISSUE RECORD:
SITE PLAN
RESUBMISSION |
12-17-2015

SIGNED BY:
FLORIDA ARCHITECT



Z3.0

WEST & NORTH ELEVATIONS

Scale: 1" = 20'-0"