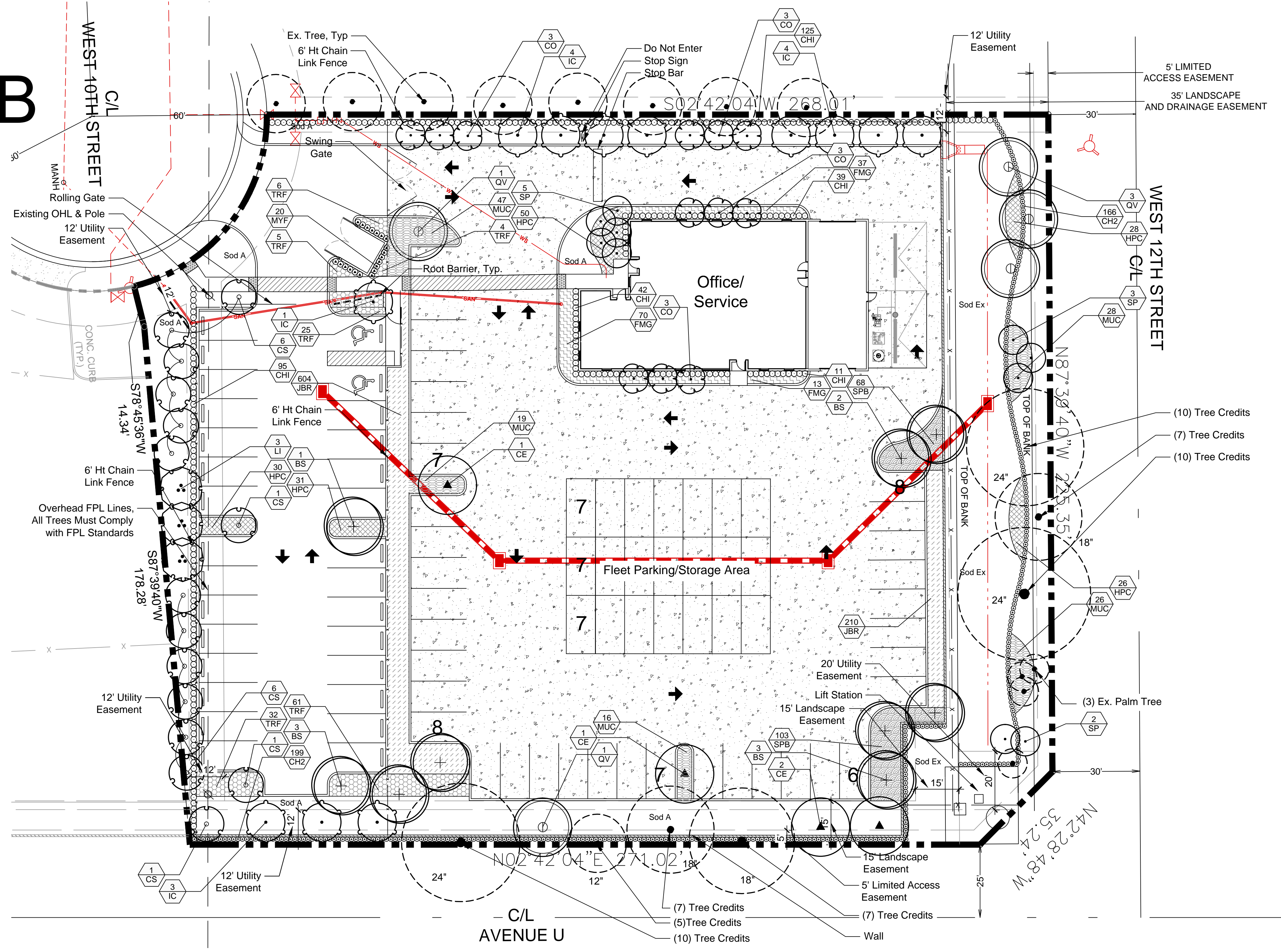


Exhibit B

Plant List

TREES	CODE	QTY	BOTANICAL NAME / COMMON NAME	CONTAINER	CALIPER	HEIGHT	SPREAD
+	BS	9	Bursera simaruba / Gumbo Limbo+ Single Straight Trunk, Min 6' CT	N/A	2.5" DBH	12'	5'
○	CE	4	Conocarpus erectus / Green Buttonwood* Single Straight Trunk, Min. 2.5" Cal., No Low Croch, Min. 6' CT	N/A	2.5" Cal	12'	6'
○	CS	15	Conocarpus erectus sericeus / Silver Button Wood* Single Straight Trunk, Min. 5' CT Min.	N/A	2.5" Cal	12'	5'
○	CO	12	Cordia sebestena / Orange Geiger Tree+ Single Straight Trunk, Min. 5' CT	N/A	2.5" Cal	12'	6'
○	IC	12	Ilex cassine / Dahoon Holly+ Single Straight Trunk, Min. 6' CT.	N/A	2.5" Cal	12'	6'
○	LI	3	Lagerstroemia indica 'Tuscarora' / Crape Myrtle Multi-Trunk+ Multi-Trunk, Min. 6' CT.	N/A	2.5" Cal	12'	6'
○	QV	5	Quercus virginiana / Southern Live Oak+ Single Straight Trunk, Min. 6' CT.	N/A	2.5" Cal	12'	6'
○	SP	10	Sabal palmetto / Sabal Palm+ Slick Trunks, Hurricane Cut, Stagger Heights	N/A	N/A	12'-24' CT	N/A
SHRUBS	CODE	QTY	BOTANICAL NAME / COMMON NAME	CONTAINER	SPACING	HEIGHT	SPREAD
○	CHI	312	Chrysobalanus icaco / Coco Plum+ Full To Base	3 gal. min.	24" o.c.	24"	24"
+	CH2	365	Chrysobalanus icaco / Coco Plum+ Full To Base	7 gal. Min.	18" o.c.	30"	24"
○	MYF	20	Myrcianthes fragrans / Simpson's Stopper+ Full	7 gal. min.	24" o.c.	36"	24"
GROUND COVERS	CODE	QTY	BOTANICAL NAME / COMMON NAME	CONTAINER	SPACING	HEIGHT	SPREAD
□	SOD EX	7,330 sf	Existing Sod	sod			
□	FMG	120	Ficus microcarpa 'Green Island' / Green Island Ficus+ Full To Base	3 Gal. Min.	24" o.c.	12"	12"
□	HPC	165	Hamelia patens 'Compacta' / Dwarf Firebush+ Full	3 Gal. Min.	24" o.c.	12"	12"
□	JBR	814	Juniperus horizontalis 'Blue Rug' / Blue Rug Juniper+ Full	3 Gal. Min.	18" o.c.	6"	12"
□	MUC	136	Muhlenbergia capillaris / Pink Muhly Full	3 Gal. Min.	30" o.c.	18"	18"
□	SPB	171	Spartina bakeri / Spartina Full	3 Gal. Min.	24" o.c.	12"	12"
□	SOD A	6,723 sf	Stenotaphrum secundatum / St. Augustine Grass Solid Sod, Stagger Seams, Field Verify Sod Areas Prior To Bid, Sod All Disturbed Areas	sod			
□	TRF	133	Tyloschium floridanum / Dwarf Fakahatchee Grass+ Full To Base	3 Gal. Min.	30" o.c.	24"	24"

* = Florida Native / + = Drought Tolerant



Preserved Trees

Species	Trunk DBH
Live Oak	24" Ex. DBH / 2.5" DBH Per Tree = (10) Tree Credits
Live Oak	18" Ex. DBH / 2.5" DBH Per Tree = (7) Tree Credits
Live Oak	24" Ex. DBH / 2.5" DBH Per Tree = (10) Tree Credits
Live Oak	18" Ex. DBH / 2.5" DBH Per Tree = (7) Tree Credits
Live Oak	18" Ex. DBH / 2.5" DBH Per Tree = (7) Tree Credits
Live Oak	12" Ex. DBH / 2.5" DBH Per Tree = (5) Tree Credits
Live Oak	24" Ex. DBH / 2.5" DBH Per Tree = (10) Tree Credits
TOTAL CREDITS: (56) Tree Credits	

Landscape Requirements

Category	Requirement	No. Required	No. Provided
Trees:			
North Property Line	225'	20 I.F.	11
South Property Line	273'	20 I.F.	14
East Property Line	306'	20 I.F.	15
West Property Line	268'	20 I.F.	13
TOTAL BUFFER TREES		53	101 (60ex)++
Hedge:			
North Property Line	225'	Hedge	Hedge
South Property Line	273'	Hedge	Hedge
East Property Line	306'	Hedge	Hedge
West Property Line	268'	Hedge	Hedge
TOTAL HEDGE			585
Groundcover:			
North Property Line	225'	25%	90'
TOTAL GROUNDCOVER			112' of Groundcover (NO sod)
Landscape Area (Site: 74,357 sf)	20% Site	14,871 sf	22,223 sf
Area per Additional Parking Spaces (13 sp)	10 sf / 1 space	130	130
TOTAL LANDSCAPE AREA REQUIRED		15,001 sf	23,296 sf
Sod Area (15,031 sf Landscape Area)	45% Max.	6,764 sf Max	6,723 sf*

Category	Requirement	No. Required	No. Provided
Interior Landscape Area (Total Required: 15,001 sf)	50% of Required	7,501 sf	13,307 sf
1 Tree per 100 sf Add. Impervious (2,600 sf)	1/100 sf	26	75++
Terminal Island Trees (8 Islands)	1/Island	8	8
Interior Island Trees (4 Islands)	1/Island	4	4
Foundation Trees (222 Adjacent to Drive Isles)	1/20 ft	11	11
TOTAL INTERIOR TREES		49	98
Overall Site Trees (Site: 74,357 sf)	1/1500 sf	102	126
(INCLUDES TREES COUNTED FOR BUFFER AND INTERIOR)			
Category	Requirement	No. Required	No. Provided
Native Shade Trees (Overall)	60%	62	86++
Native Accent Trees (Overall)	10%	10	27
Palm Trees (Overall)	20% Max.	21 Max.	14
Shade Tree Species Mix (Overall)	6 species	6	8
Max Quantity of One Species (Overall)	65% Max.	68	61
Shade Trees in Parking Area	50%	26	60++

++Additional Trees Counted Towards Interior Requirements
*Excluding 7,330 sf of existing sod

Landscape Notes

- Easements shall not encroach landscape buffers more than 5 feet.
- Landscape in right-of-way buffers shall be installed on the exterior side of walls or fences.
- Walls & fences shall be setback a min. of 10' from the ultimate R-O-W.
- FDOT Type D or F curb shall be provided along the perimeter of all landscape, open space, drainage and grassed areas adjacent to paved vehicular use areas, except where wheel stops are provided.
- Safe sight triangles shall be maintained clear of vegetation to provide unobstructed visibility between 30' and 8' above crown of road.
- Light poles, fire hydrants, electrical/mechanical equipment, signs, drainage structures, etc. shall not interfere with landscaping in terminal islands, parking islands, medians, buffers or other landscaped areas.
- All plant material is to be installed at the height, spread and DBH/Caliper shown in the Plant List, container sizes are given as a suggestion only.
- All landscape areas (including sod) shall be irrigated with an underground automatic sprinkler system providing min. 120% coverage.
- Trees shown on this plan are for graphic representation only. Tree spacing is based on design requirements and the trees shown on these plans attempt to accomplish that spacing while maintaining the required setbacks from utilities. Trees may be field adjusted to avoid conflicts with driveways and underground utilities. In any case the trees shall be located in the field in accordance with the planting details shown hereon.
- Trees are to be installed with a ten foot (10') separation from any water or sewer main and/or service, hydrants, and lift stations. If a ten foot (10') separation cannot be achieved, the tree can be installed with a root barrier system. Refer to the "Root Barrier" detail for installation requirements. However, in no case shall a tree encroach into a PBCEU without prior PBCEU approval and only sod can be installed within 7.5' of a fire hydrant unless otherwise approved by the Fire Marshal.
- All planters shall be excavated to a minimum depth of twenty-four (24) inches and back-filled with a suitable soil consisting of fifty percent (50%) composted organic matter, well-mixed with native soil. Backfill material shall be free from rock, construction debris, or other extraneous material.
- All tree stakes and braces to remain onsite and attached for a minimum of 12 months

Jon E. Schmidt and Associates
Landscape Architecture & Site Planning
2247 Palm Beach Lakes Blvd., Suite 101
West Palm Beach, Florida 33409
Tel. (561) 684-6141 • Fax. (561) 684-6142
E-mail: jschmidt@jesla.com
Website: www.jesla.com
License No.: LC26000232

Maruti Transit

City of Riviera Beach, Florida

Date:	06/29/15
Scale:	1" = 20'-0"
Design By:	MLD
Drawn By:	BMC
Checked By:	JES
File No.	731.02
Job No.	15-29

REVISIONS / SUBMISSIONS
08/17/15 Revisions per Comments
09/28/15 Tree Survey Overlay
10/15/15 Comments
11/12/15 Buffer Revision

NOT VALID WITHOUT THE SIGNATURE AND ORIGINAL RAISED SEAL OF A FLORIDA LICENSED LANDSCAPE ARCHITECT.

Printed name
FLORIDA REGISTRATION NO. LA 0001438

Landscape Plan

