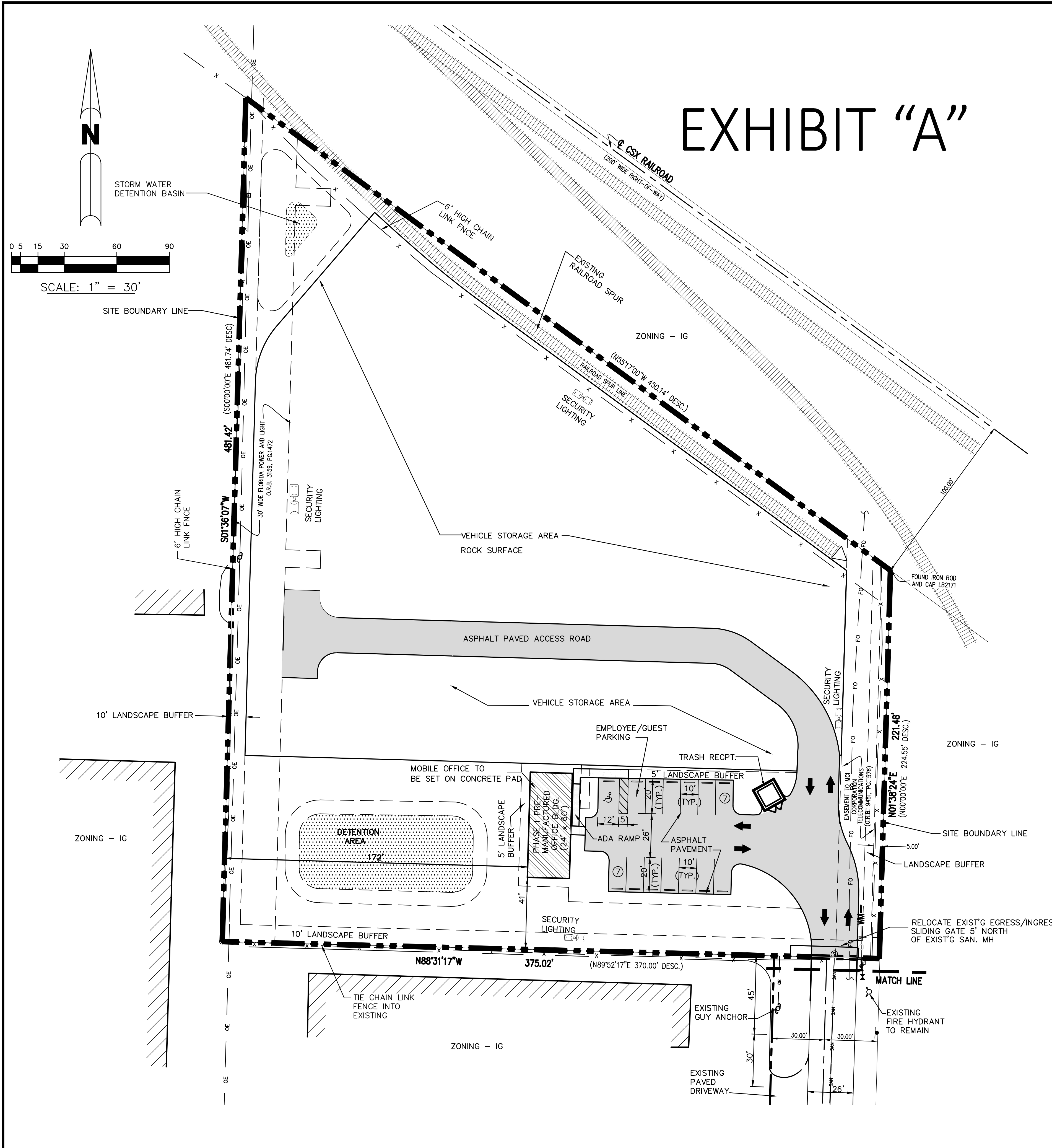


# EXHIBIT "A"



### LEGAL DESCRIPTION:

A PARCEL OF LAND IN SECTION 25, TOWNSHIP 42 SOUTH, RANGE 42 EAST, PALM BEACH COUNTY, FLORIDA, MORE PARTICULARLY DESCRIBED AS FOLLOWS:  
 FROM THE SOUTHEAST CORNER OF THE NORTH QUARTER OF THE NORTHWEST QUARTER OF SECTION 36, TOWNSHIP 42 SOUTH, RANGE 42 EAST (WHICH CORNER IS THE CENTERLINE INTERSECTION OF MILITARY TRAIL AND DYER ROAD) THENCE SOUTH 89°52'17" WEST, ALONG THE SOUTH LINE OF SAID NORTH QUARTER OF THE NORTHWEST QUARTER (AND THE CENTERLINE OF DYER ROAD) AFORESAID, A DISTANCE OF 2293.24 FEET TO A POINT; THENCE NORTH, PARALLEL TO THE WESTERLY LINES OF SECTIONS 25 AND 36 AFORESAID, A DISTANCE OF 1676.11 FEET TO THE POINT OF BEGINNING; THENCE CONTINUE NORTH A DISTANCE OF 224.55 FEET TO A POINT IN THE SOUTHERLY RIGHT-OF-WAY LINE OF THE SEABOARD AIRLINE RAILWAY; THENCE NORTH 55°17'00" WEST, ALONG THE SAID SOUTHERLY RIGHT-OF-WAY LINE, A DISTANCE OF 450.14 FEET TO A POINT IN THE WESTERLY LINE OF SECTION 25 AFORESAID; THENCE SOUTH, ALONG SAID SECTION LINE, A DISTANCE OF 481.74 FEET TO A POINT; THENCE NORTH 89°52'17" EAST A DISTANCE OF 370.00 FEET TO THE POINT OF BEGINNING.

CONTAINING 3.026 ACRES

### ZONING:

IG - GENERAL INDUSTRIAL DISTRICT

### LAND USE:

INDUSTRIAL

### SITE DATA

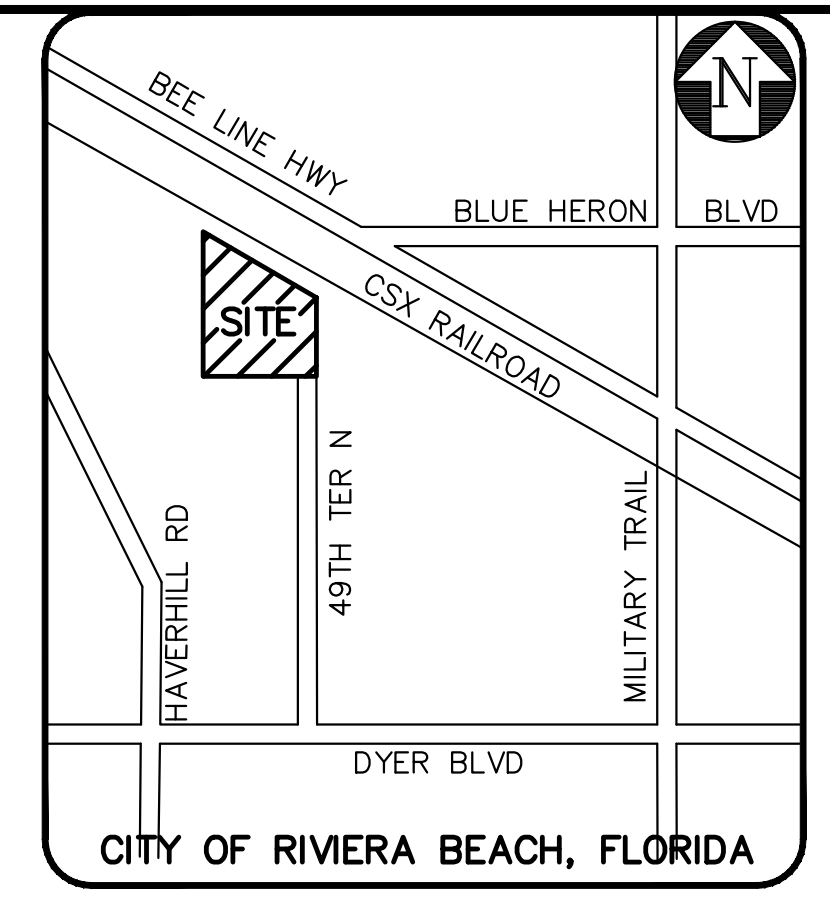
SITE AREA: 3.026 AC. (100%)

IMPERVIOUS AREA	PERVIOUS AREA
2.110 AC. (69.7%)	0.916 AC. (30.3%)

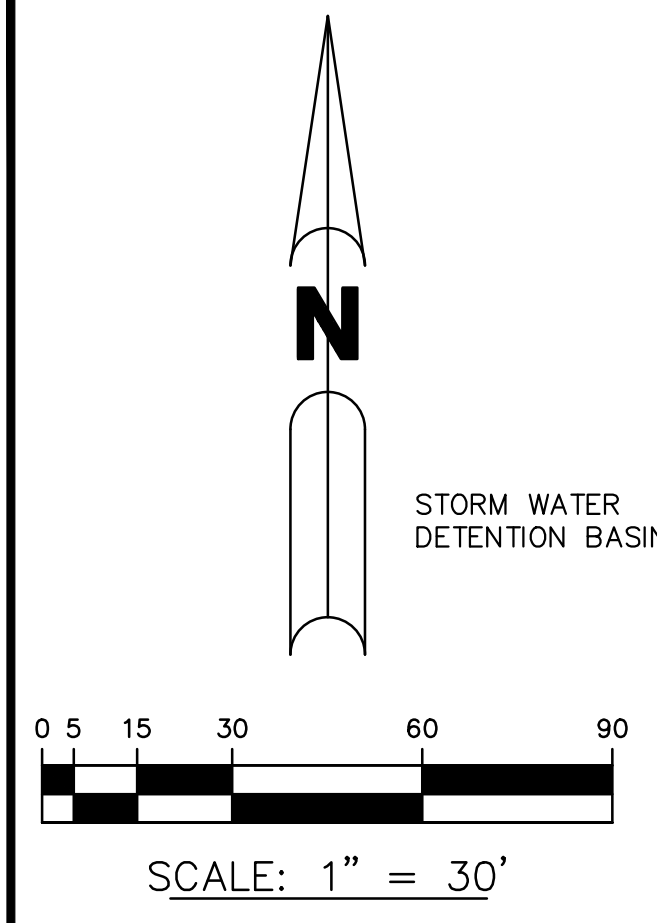
### PARKING CALCULATIONS:

	REQUIRED	PROVIDED
OFFICE SPACE (1 SPACE PER 300 SF) 24' x 60' = 1,440 SF	5.0	5
OFFICE SPACE (1 SPACE PER EMPLOYEE)	9.0	9
TOTAL	14.0	14.0

\*INCLUDES 1 HANDICAP SPACES

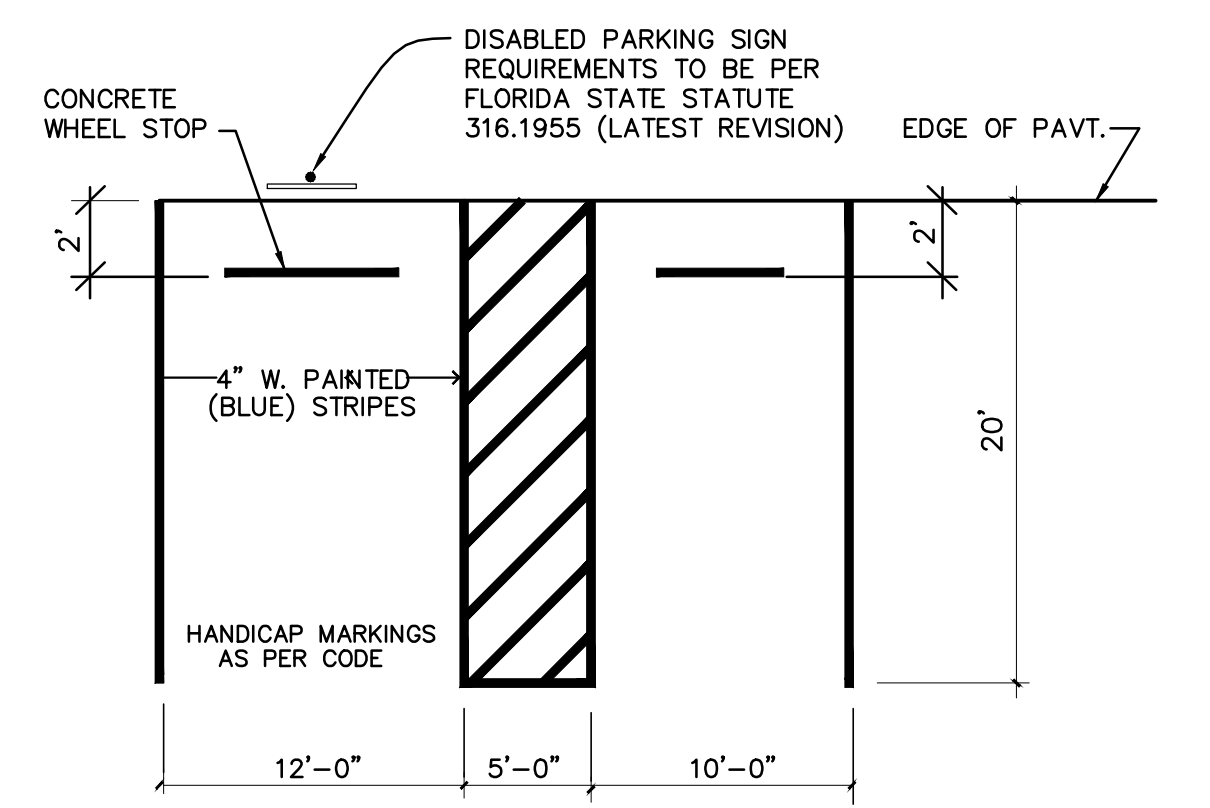


LOCATION MAP  
N.T.S.

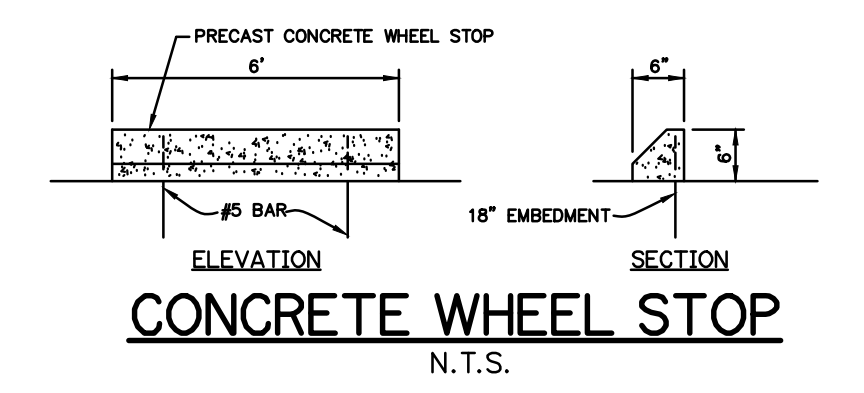


### LEGEND

- EXISTING FEATURES:**
- SITE BOUNDARY LINE
  - x- FENCE LINE
  - OE- OVERHEAD POWER LINE
  - FO- UNDERGROUND FIBER OPTICS LINE
  - ⊙ SANITARY SEWER MANHOLE
  - ⊕ FIRE HYDRANT
  - SAN- SANITARY SEWER
- PROPOSED FEATURES:**
- ▨ PHASE I STRUCTURE
  - - - FUTURE ROAD / PARKING SPACE
  - ➔ TRAFFIC FLOW DIRECTION
  - RETENTION BASIN EQUALIZATION CONDUIT
  - MANHOLE
  - WM — WATER MAIN
  - SS — SANITARY SEWER
  - ⊕ FIRE HYDRANT
  - ⊙ SECURITY LIGHTING



HANDICAP STRIPING DETAIL  
N.T.S.



CONCRETE WHEEL STOP  
N.T.S.

DESIGN	TJM	5							
DRAWN	JAO	4							
CHECKED	TJM	2							
		1	7/27/15	REVISED PER COMMENTS DATED 7/4/15	TJM				
NO.	DATE	REVISION	APPD BY						

**Messler & Associates**  
 CONSULTING ENGINEERS  
 5746 VIA RIO, JUPITER, FLORIDA 33458  
 Phone (561) 748-6015 Fax (561) 748-6889  
 Certificate of Authorization No. 00003616

**ALLIED TRAILERS SALES**  
 49th TERRACE NORTH  
 CITY OF RIVIERA BEACH, PALM BEACH COUNTY, FL.

**SITE PLAN**

PROJ. NO.	15-003
SCALE	1"=30'
DATE	MAY 2015
TIMOTHY J. MESSLER, P.E. FL. REG. No. 16422	SHEET 1 OF 1