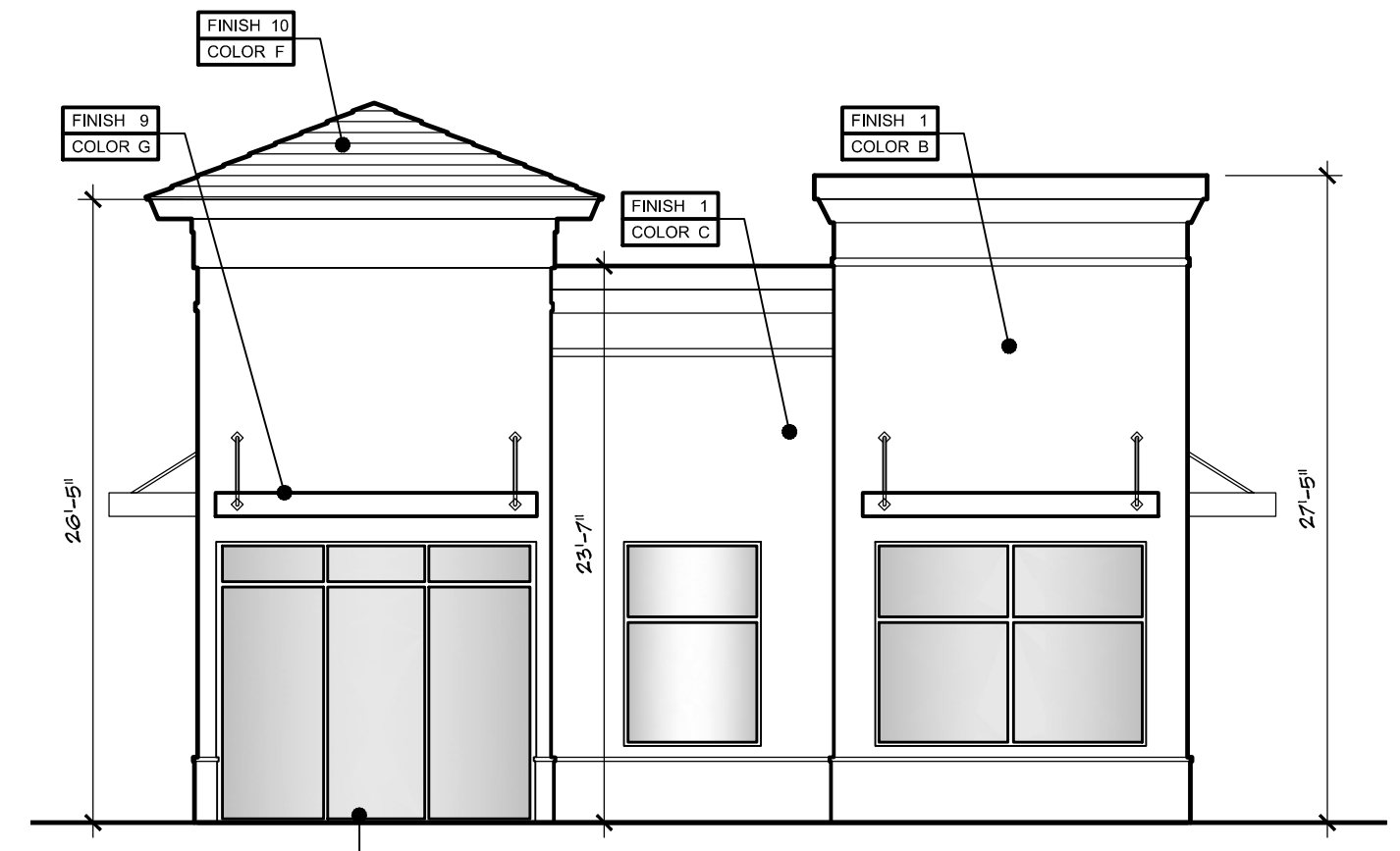
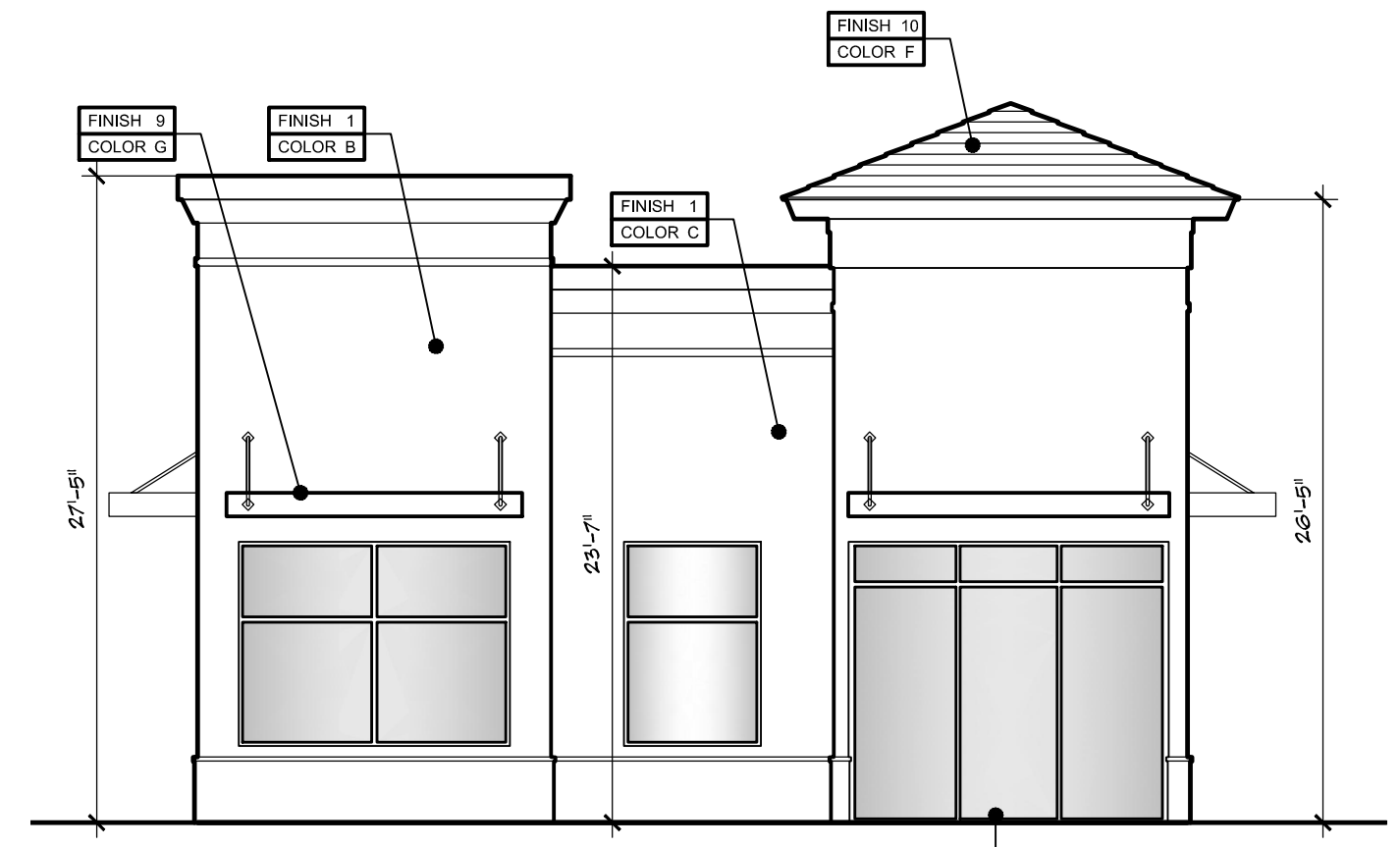


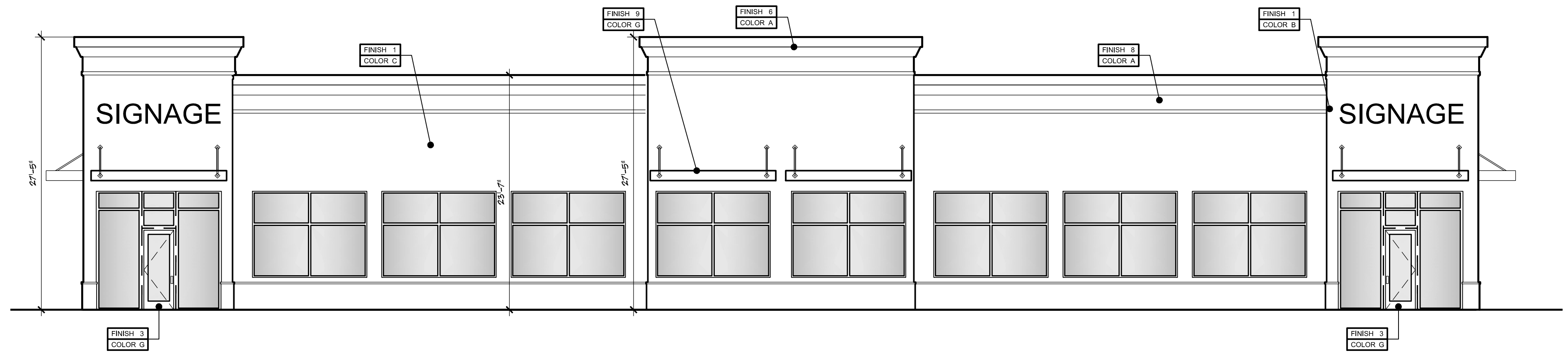
A BUILDING D PLAN
SCALE: 1/32"=1'-0"



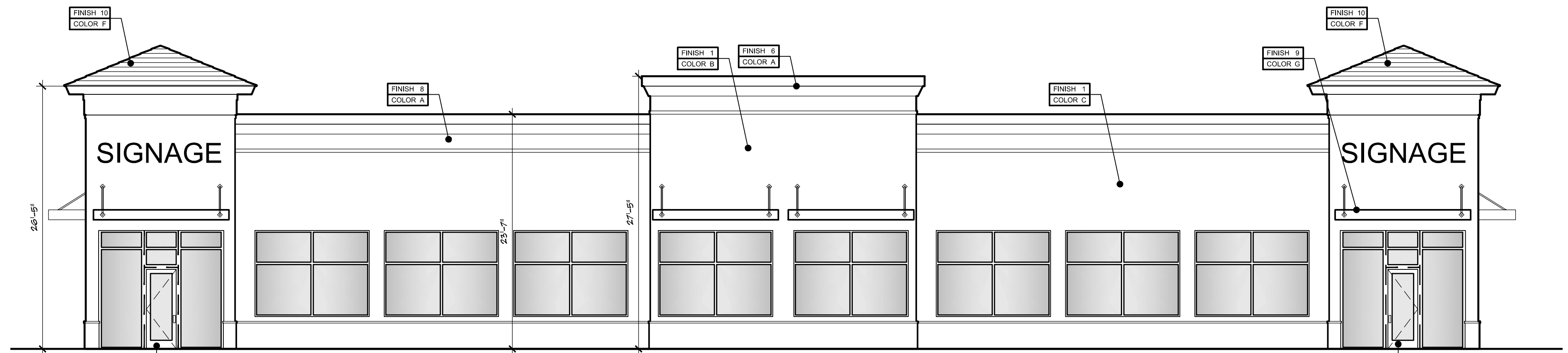
4 PROPOSED EAST ELEVATION
SCALE: 1/8"=1'-0"



3 PROPOSED WEST ELEVATION
SCALE: 1/8"=1'-0"



2 PROPOSED NORTH ELEVATION
SCALE: 1/8"=1'-0"



1 PROPOSED SOUTH ELEVATION
SCALE: 1/8"=1'-0"

