

B1 OVERALL FLOOR PLAN
1" = 30'-0"

ALL IDEAS, DESIGNS, ARRANGEMENTS AND PLANS INDICATED OR REPRESENTED BY THIS DRAWING ARE OWNED BY AND THE PROPERTY OF BAKER BARRIOS ARCHITECTS, INC. AND WERE CREATED, EVOLVED, AND DEVELOPED FOR USE ON AND IN CONNECTION WITH THE SPECIFIED PROJECT. NONE OF THE IDEAS, DESIGNS, ARRANGEMENTS OR PLANS SHALL BE USED BY OR DISCLOSED TO ANY PERSON, FIRM, OR CORPORATION FOR ANY PURPOSE WHATSOEVER WITHOUT THE WRITTEN PERMISSION OF BAKER BARRIOS ARCHITECTS, INC. WARNING: REPRODUCTION HEREOF IS A CRIMINAL OFFENSE UNDER 18 U.S.C. SEC. 506 UNAUTHORIZED DISCLOSURE MAY CONSTITUTE TRADE SECRET MISAPPROPRIATION IN VIOLATION OF 11 C.F.R. 24.2-31-1 ET. SEC. AND OTHER LAWS. THE IDEAS, ARRANGEMENTS AND DESIGNS DISCLOSED HEREIN MAY BE PATENTED OR BE THE SUBJECT OF PENDING PATENT APPLICATION.

NO	DATE	REVISION/ SUBMISSION
		MASTER SITE PLAN: Supplemental Information
1	06/03/2021	MAJOR SITE PLAN REVIEW - SUBMITTAL 2

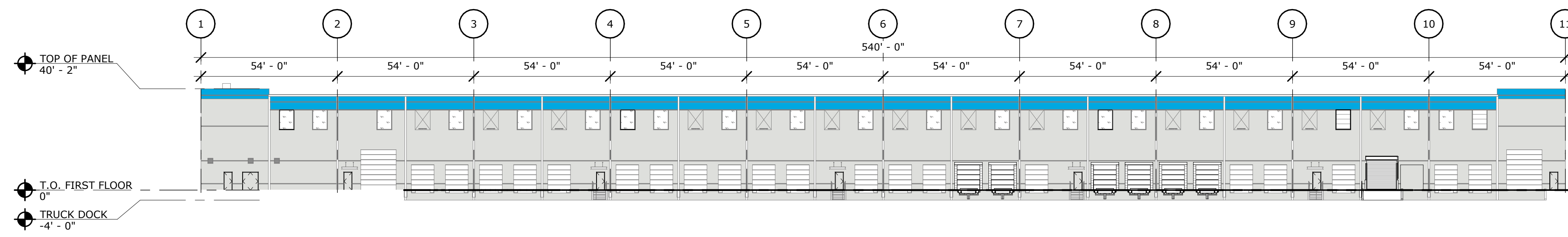
TO THE BEST OF THE ARCHITECT'S OR ENGINEER'S KNOWLEDGE AND ABILITY, THE PLANS AND SPECIFICATIONS COMPLY WITH THE APPLICABLE MINIMUM BUILDING CODES. JED R. PREST, AIA AR92532

NOT FOR CONSTRUCTION

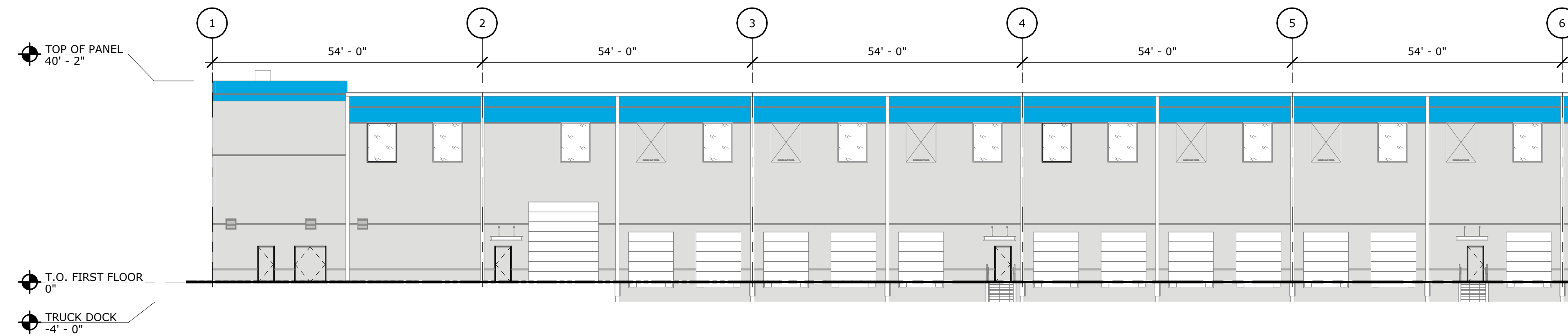
Baker Barrios
ORLANDO
189 S. ORANGE AVE., SUITE 1700
ORLANDO, FLORIDA 32801
407 926 3000
INFO@BAKERBARRIOS.COM
BAKERBARRIOS.COM
AA0002981 | LC26000427

TENANT IMPROVEMENT
1301 PRESIDENT BARACK OBAMA HWY,
RIVIERA BEACH, FL 33404

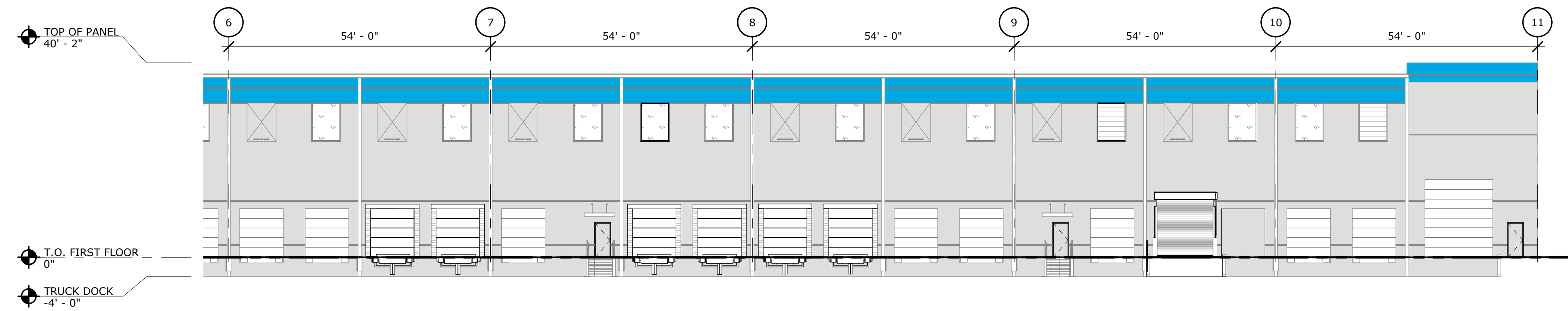
OVERALL FLOOR PLAN
PROJECT NO: 200166.00 SHEET NUMBER: **.A1.10**



D1 NORTH BUILDING ELEVATION
1" = 30'-0"



C1 ENLARGED BUILDING ELEVATION - NORTH
1/16" = 1'-0"



B1 ENLARGED BUILDING ELEVATION - NORTH
1/16" = 1'-0"

EXTERIOR COLOR LEGEND

MARK	MANUFACTURER	DESCRIPTION	REMARKS
EXTERIOR PAINT / TEXTURED ACRYLIC COATING (CONCRETE WALL PANELS)			
		ANODIZED ALUMINUM STOREFRONT SYSTEM	
PT-1	SHERWIN WILLIAMS	SW 7063 NEBULOUS WHITE	EXTERIOR FIELD COLOR
PT-2	SHERWIN WILLIAMS	SW 7066 GRAY MATTERS	EXTERIOR ACCENT COLOR
PT-3	SHERWIN WILLIAMS	PAINT COLORS TO MATCH PANTONE 2995 C	EXTERIOR ACCENT COLOR
PT-4	MFR.	MANU. STANDARD "BRIGHT WHITE"	EXTERIOR FIELD COLOR
PT-5	MFR.	OSHA CAUTION YELLOW/BLACK DIAGONAL STRIPES	COLUMN BASE

ALL IDEAS, DESIGNS, ARRANGEMENTS AND PLANS INDICATED OR REPRESENTED BY THIS DRAWING ARE OWNED BY AND THE PROPERTY OF BAKER BARRIOS ARCHITECTS, INC. AND WERE CREATED, EVOLVED, AND DEVELOPED FOR USE ON AND IN CONNECTION WITH THE SPECIFIED PROJECT. NONE OF THE IDEAS, DESIGNS, ARRANGEMENTS OR PLANS SHALL BE USED BY OR DISCLOSED TO ANY PERSON, FIRM, OR CORPORATION FOR ANY PURPOSE WHATSOEVER WITHOUT THE WRITTEN PERMISSION OF BAKER BARRIOS ARCHITECTS, INC. WARNING: REPRODUCTION HEREOF IS A CRIMINAL OFFENSE UNDER 18 U.S.C. SEC. 506. UNAUTHORIZED DISCLOSURE MAY CONSTITUTE TRADE SECRET MISAPPROPRIATION IN VIOLATION OF I.C. 24-2-31-1 ET. SEQ. AND OTHER LAWS. THE IDEAS, ARRANGEMENTS AND DESIGNS DISCLOSED HEREIN MAY BE PATENTED OR BE THE SUBJECT OF PENDING PATENT APPLICATION.

NO	DATE	REVISION/ SUBMISSION
		MASTER SITE PLAN: Supplemental Information

TO THE BEST OF THE ARCHITECT'S OR ENGINEER'S KNOWLEDGE AND ABILITY, THE PLANS AND SPECIFICATIONS COMPLY WITH THE APPLICABLE MINIMUM BUILDING CODES. JED R. PREST, AIA AR92532

NOT FOR CONSTRUCTION

ORLANDO
189 S. ORANGE AVE., SUITE 1700
ORLANDO, FLORIDA 32801
407 926 3000
INFO@BAKERBARRIOS.COM
BAKERBARRIOS.COM
AA0002981 | LC26000427

Baker Barrios

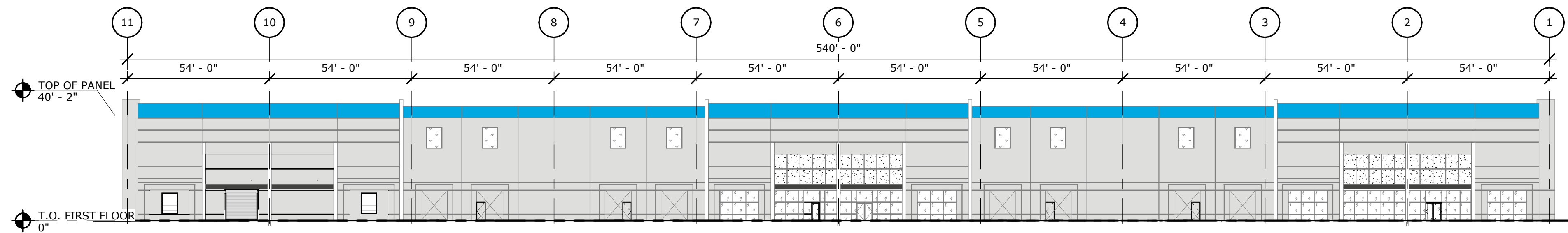
TENANT IMPROVEMENT

1301 PRESIDENT BARACK OBAMA HWY,
RIVIERA BEACH, FL 33404

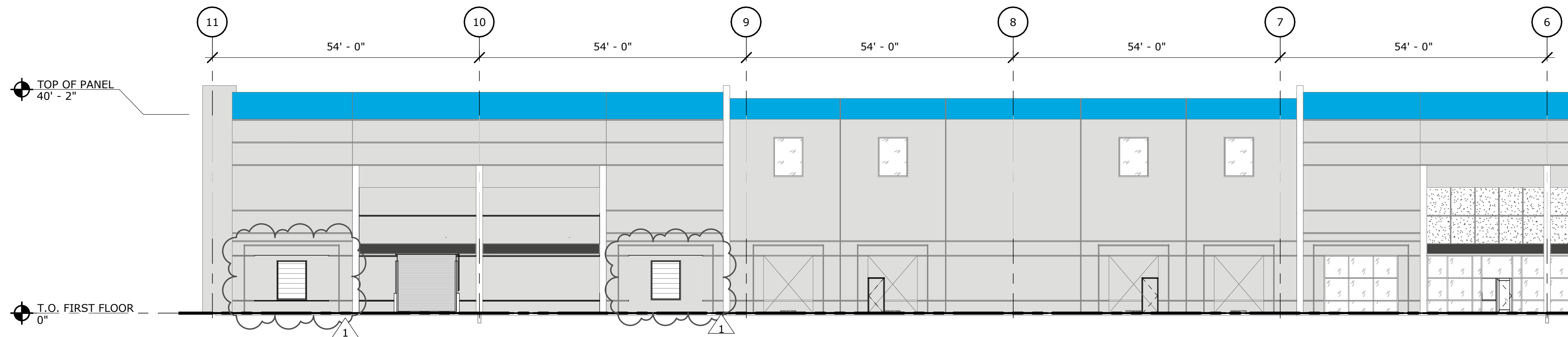
BUILDING ELEVATIONS

PROJECT NO: 200166.00 SHEET NUMBER: **.A2.10**

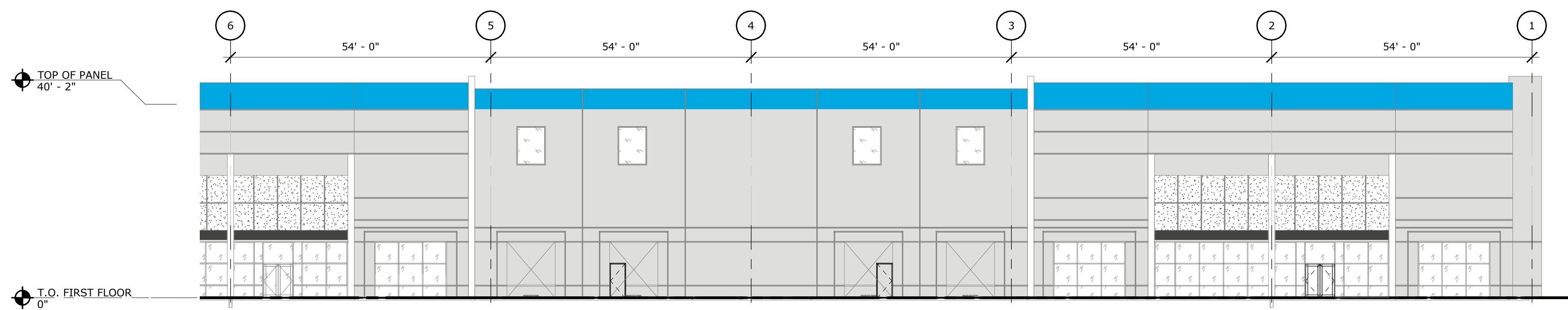
6/3/2021 4:18:51 PM



D1 BUILDING ELEVATION - SOUTH
1" = 30'-0"



C1 ENLARGED BUILDING ELEVATION - SOUTH
1/16" = 1'-0"



B1 ENLARGED BUILDING ELEVATION - SOUTH
1/16" = 1'-0"

EXTERIOR COLOR LEGEND			
MARK	MANUFACTURER	DESCRIPTION	REMARKS
EXTERIOR PAINT / TEXTURED ACRYLIC COATING (CONCRETE WALL PANELS)			
		ANODIZED ALUMINUM STOREFRONT SYSTEM	
PT-1	SHERWIN WILLIAMS	SW 7063 NEBULOUS WHITE	EXTERIOR FIELD COLOR
PT-2	SHERWIN WILLIAMS	SW 7066 GRAY MATTERS	EXTERIOR ACCENT COLOR
PT-3	SHERWIN WILLIAMS	PAINT COLORS TO MATCH PANTONE 2995 C	EXTERIOR ACCENT COLOR
PT-4	MFR.	MANU. STANDARD "BRIGHT WHITE"	EXTERIOR FIELD COLOR
PT-5	MFR.	OSHA CAUTION YELLOW/BLACK DIAGONAL STRIPES	COLUMN BASE

ALL IDEAS, DESIGNS, ARRANGEMENTS AND PLANS INDICATED OR REPRESENTED BY THIS DRAWING ARE OWNED BY AND THE PROPERTY OF BAKER BARRIOS ARCHITECTS, INC. AND WERE CREATED, EVOLVED, AND DEVELOPED FOR USE ON AND IN CONNECTION WITH THE SPECIFIED PROJECT. NONE OF THE IDEAS, DESIGNS, ARRANGEMENTS OR PLANS SHALL BE USED BY OR DISCLOSED TO ANY PERSON, FIRM, OR CORPORATION FOR ANY PURPOSE WHATSOEVER WITHOUT THE WRITTEN PERMISSION OF BAKER BARRIOS ARCHITECTS, INC. WARNING: REPRODUCTION HEREOF IS A CRIMINAL OFFENSE UNDER 18 U.S.C. SEC. 506. UNAUTHORIZED DISCLOSURE MAY CONSTITUTE TRADE SECRET MISAPPROPRIATION IN VIOLATION OF 11 C.F.R. 24.2-31.1 ET. SEC. AND OTHER LAWS. THE IDEAS, ARRANGEMENTS AND DESIGNS DISCLOSED HEREIN MAY BE PATENTED OR BE THE SUBJECT OF PENDING PATENT APPLICATION.

NO	DATE	REVISION/ SUBMISSION
		MASTER SITE PLAN: Supplemental Information
1	06/03/2021	MAJOR SITE PLAN REVIEW - SUBMITTAL 2

TO THE BEST OF THE ARCHITECT'S OR ENGINEER'S KNOWLEDGE AND ABILITY, THE PLANS AND SPECIFICATIONS COMPLY WITH THE APPLICABLE MINIMUM BUILDING CODES. JED R. PREST, AIA AR92532

NOT FOR CONSTRUCTION

Baker Barrios
ORLANDO
189 S. ORANGE AVE., SUITE 1700
ORLANDO, FLORIDA 32801
407 926 3000
INFO@BAKERBARRIOS.COM
BAKERBARRIOS.COM
AA0002981 | LC26000427

TENANT IMPROVEMENT

1301 PRESIDENT BARACK OBAMA HWY,
RIVIERA BEACH, FL 33404

BUILDING ELEVATIONS

PROJECT NO: 200166.00 SHEET NUMBER: **.A2.11**

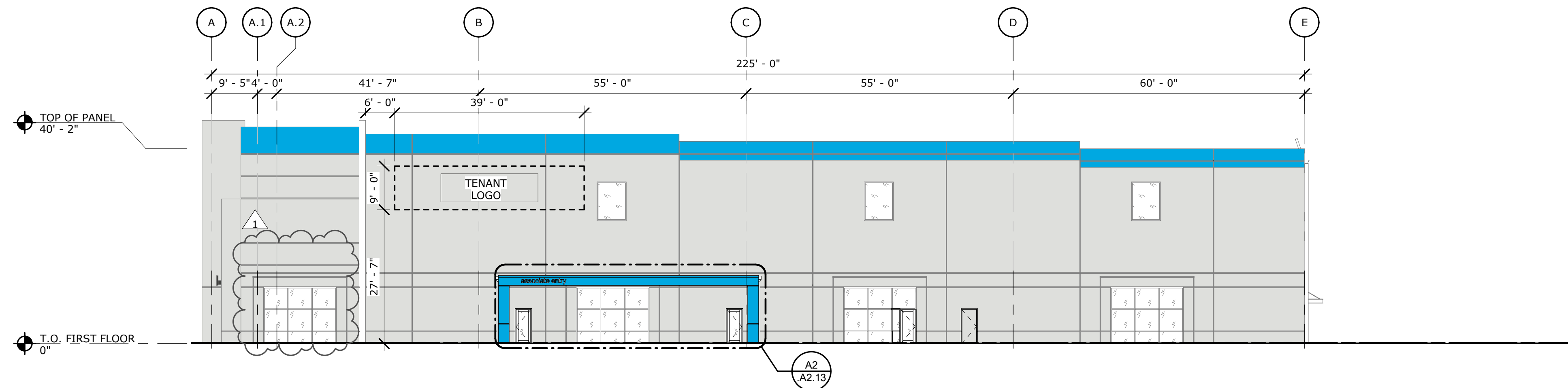
TOP OF PANEL
40' - 2"

T.O. FIRST FLOOR
0"

TRUCK DOCK
-4' - 0"

D1 BUILDING ELEVATION - WEST

1/16" = 1'-0"



B1 BUILDING ELEVATION - EAST

1/16" = 1'-0"

ALL IDEAS, DESIGNS, ARRANGEMENTS AND PLANS INDICATED OR REPRESENTED BY THIS DRAWING ARE OWNED BY AND THE PROPERTY OF BAKER BARRIOS ARCHITECTS, INC. AND WERE CREATED, EVOLVED, AND DEVELOPED FOR USE ON AND IN CONNECTION WITH THE SPECIFIED PROJECT. NONE OF THE IDEAS, DESIGNS, ARRANGEMENTS OR PLANS SHALL BE USED BY OR DISCLOSED TO ANY PERSON, FIRM, OR CORPORATION FOR ANY PURPOSE WHATSOEVER WITHOUT THE WRITTEN PERMISSION OF BAKER BARRIOS ARCHITECTS, INC. WARNING: REPRODUCTION HEREOF IS A CRIMINAL OFFENSE UNDER 18 U.S.C. SEC. 506. UNAUTHORIZED DISCLOSURE MAY CONSTITUTE TRADE SECRET MISAPPROPRIATION IN VIOLATION OF 1 C.F.R. 24.2-31.1 ET. SEC. AND OTHER LAWS. THE IDEAS, ARRANGEMENTS AND DESIGNS DISCLOSED HEREIN MAY BE PATENTED OR BE THE SUBJECT OF PENDING PATENT APPLICATION.

NO	DATE	REVISION/ SUBMISSION
		MASTER SITE PLAN: Supplemental Information
1	06/03/2021	MAJOR SITE PLAN REVIEW - SUBMITTAL 2

TO THE BEST OF THE ARCHITECT'S OR ENGINEER'S KNOWLEDGE AND ABILITY, THE PLANS AND SPECIFICATIONS COMPLY WITH THE APPLICABLE MINIMUM BUILDING CODES. JED R. PREST, AIA AR92532

NOT FOR CONSTRUCTION



ORLANDO
189 S. ORANGE AVE., SUITE 1700
ORLANDO, FLORIDA 32801
407 926 3000
INFO@BAKERBARRIOS.COM
BAKERBARRIOS.COM
AA0002981 | LC26000427

Baker Barrios

TENANT IMPROVEMENT

1301 PRESIDENT BARACK OBAMA HWY,
RIVIERA BEACH, FL 33404

BUILDING ELEVATIONS

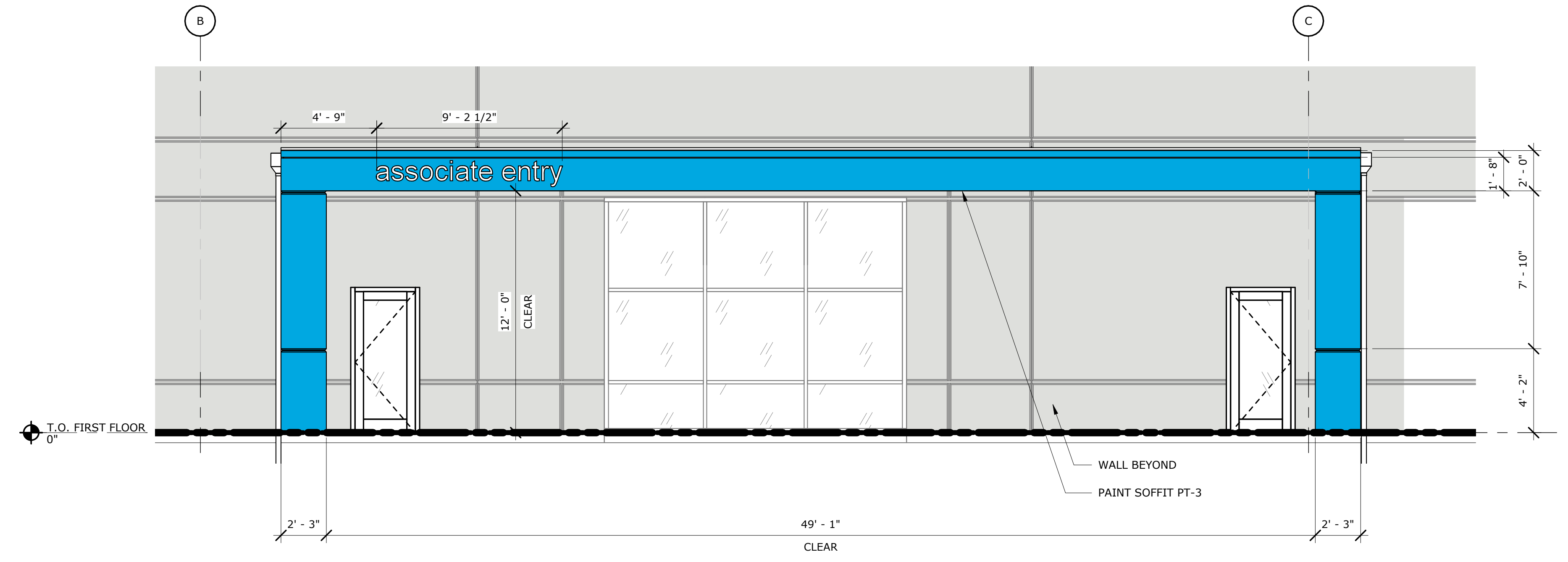
PROJECT NO: 200166.00 SHEET NUMBER: **.A2.12**

6/3/2021 4:20:02 PM

EXTERIOR COLOR LEGEND			
MARK	MANUFACTURER	DESCRIPTION	REMARKS
EXTERIOR PAINT / TEXTURED ACRYLIC COATING (CONCRETE WALL PANELS)			
		ANODIZED ALUMINUM STOREFRONT SYSTEM	
PT-1	SHERWIN WILLIAMS	SW 7063 NEBULOUS WHITE	EXTERIOR FIELD COLOR
PT-2	SHERWIN WILLIAMS	SW 7066 GRAY MATTERS	EXTERIOR ACCENT COLOR
PT-3	SHERWIN WILLIAMS	PAINT COLORS TO MATCH PANTONE 2995 C	EXTERIOR ACCENT COLOR
PT-4	MFR.	MANU. STANDARD "BRIGHT WHITE"	EXTERIOR FIELD COLOR
PT-5	MFR.	OSHA CAUTION YELLOW/BLACK DIAGONAL STRIPES	COLUMN BASE



B4 TYPICAL ENTRY CANOPY TRIM END
6" = 1'-0"



A2 ENLARGED CANOPY ELEVATION
1/4" = 1'-0"

ALL IDEAS, DESIGNS, ARRANGEMENTS AND PLANS INDICATED OR REPRESENTED BY THIS DRAWING ARE OWNED BY AND THE PROPERTY OF BAKER BARRIOS ARCHITECTS, INC. AND WERE CREATED, EVOLVED, AND DEVELOPED FOR USE ON AND IN CONNECTION WITH THE SPECIFIED PROJECT. NONE OF THE IDEAS, DESIGNS, ARRANGEMENTS OR PLANS SHALL BE USED BY OR DISCLOSED TO ANY PERSON, FIRM, OR CORPORATION FOR ANY PURPOSE WHATSOEVER WITHOUT THE WRITTEN PERMISSION OF BAKER BARRIOS ARCHITECTS, INC. WARNING: REPRODUCTION HEREOF IS A CRIMINAL OFFENSE UNDER 18 U.S.C. SEC. 506. UNAUTHORIZED DISCLOSURE MAY CONSTITUTE TRADE SECRET MISAPPROPRIATION IN VIOLATION OF 11 C.F.R. 24.2-31-1 ET. SEC. AND OTHER LAWS. THE IDEAS, ARRANGEMENTS AND DESIGNS DISCLOSED HEREIN MAY BE PATENTED OR BE THE SUBJECT OF PENDING PATENT APPLICATION.

NO	DATE	REVISION/ SUBMISSION
		MASTER SITE PLAN: Supplemental Information

TO THE BEST OF THE ARCHITECT'S OR ENGINEER'S KNOWLEDGE AND ABILITY, THE PLANS AND SPECIFICATIONS COMPLY WITH THE APPLICABLE MINIMUM BUILDING CODES. JED R. PREST, AIA AR92532

NOT FOR CONSTRUCTION

ORLANDO
189 S. ORANGE AVE., SUITE 1700
ORLANDO, FLORIDA 32801
407 926 3000
INFO@BAKERBARRIOS.COM
BAKERBARRIOS.COM
AA0002981 | LC26000427

Baker Barrios

TENANT IMPROVEMENT
1301 PRESIDENT BARACK OBAMA HWY,
RIVIERA BEACH, FL 33404

ENLARGED BUILDING ELEVATIONS

PROJECT NO: 200166.00 SHEET NUMBER: **.A2.13**

6/3/2021 4:20:19 PM