

FURNITURE PLAN PLAN KEYNOTES	
NOTE NUMBER	DESCRIPTION
1	EXISTING COLUMN, TYP.
2	18'-3"x1'-9" BOOK SHELVING UNITS (LOW SHELVING)
2A	TALL SHELVING BY YULIO
3	15'-3"x1'-9" BOOK SHELVING UNITS
4	8'-3"x1'-9" BOOK SHELVING UNITS
5	12'-3"x1'-9" BOOK SHELVING UNITS
6	6'-1"x1'-9" BOOK SHELVING UNITS
7	ADA COMPLIANT TABLE, TYP. 2'-10" A.F.F., 27" KNEE CLEARANCE, TYP.
8	ADA COMPLIANT COUNTERS, 2'-10" AF.F., TYP.
9	EXISTING CUBICLES, TYP.
10	DISPLAY, ADA COMPLIANT
11	ADA COMPLIANT DESKS, 2'-10" AFF, 27" KNEE CLEARANCE, 36" WIDE, TYP.
12	SHELVING/RACKS
13	EXISTING WATER FOUNTAIN
14	EXISTING SERVICE SINK
15	EXISTING COUNTERS &SHELVING TO REMAIN
16	COFFEE TABLE
17	AUTOMATIC ADA PUSH BUTTON DOOR OPENER @ 36 A.F.F.
18	ICE MAKER TO BE PAIRED WITH 3 STAGE ICE MACHINE FILTRATION SYSTEM
19	FLOOR BORDER / TRANSITION STRIP
20	CIRCULATION DESK PROVIDED BY OWNER
21	3 COMPARTMENT SINK
22	HAND SINK
23	SHELVING UNIT
24	HAND SINK
25	REACH IN REFRIGERATOR
26	RAPID COOK OVEN
27	REFRIGERATED WORK TOP
28	HAND SINK
29	OPEN DISPLAY MERCHANDIZER
30	GARBAGE CABINET
31	POINT OF SALE

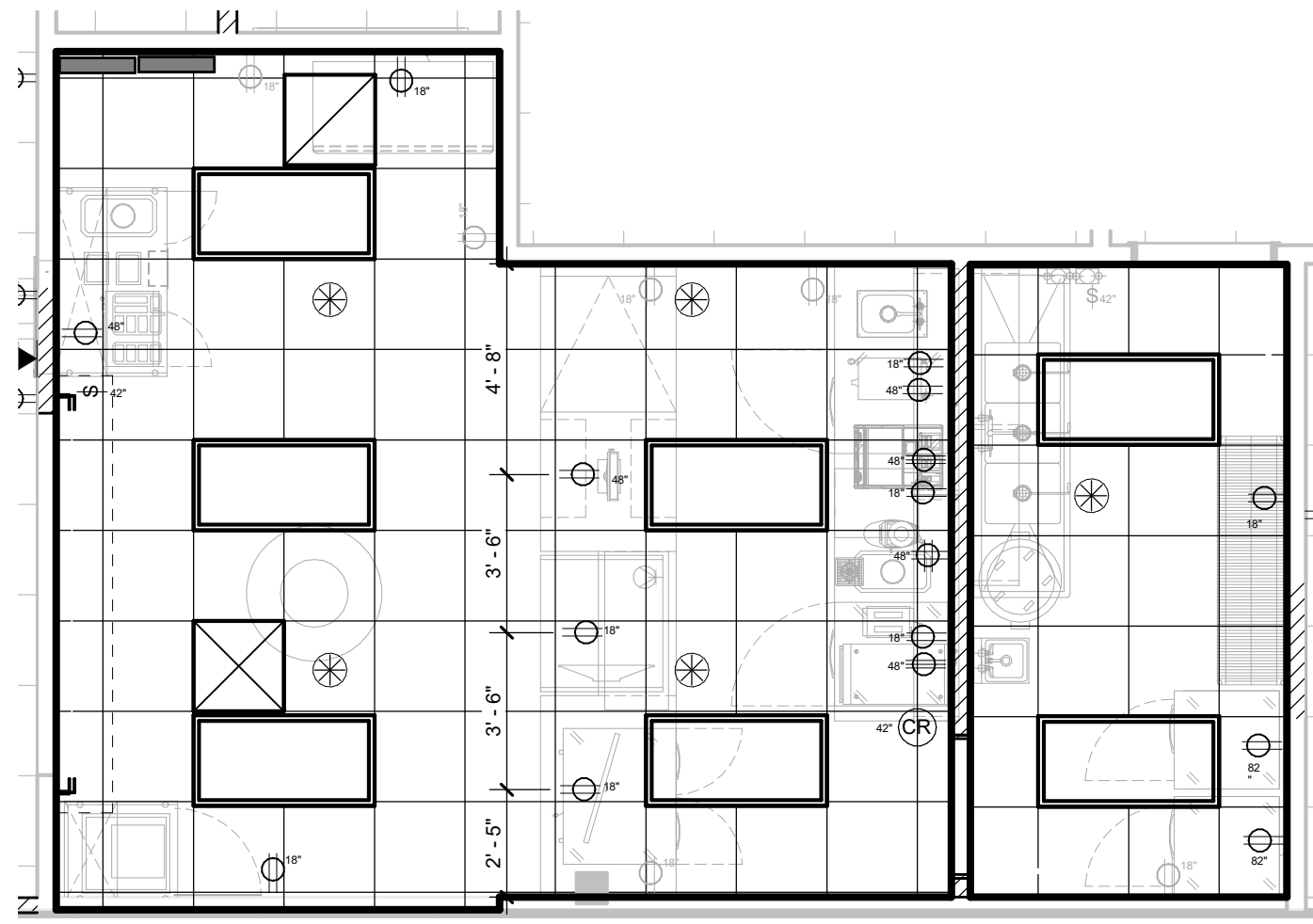
RIVIERA BEACH LIBRARY - INTERIOR RENOVATION

2129 N CONGRESS AVE
RIVIERA BEACH, FLORIDA 33404

SK-1A - CAFE EQUIPMENT PLAN



SK1-A 04/28/2021 2020-09



CEILING SYMBOLS

	6" EXTERIOR RECESSED LIGHT		EXISTING CEILING TO REMAIN. REPLACE ANY DAMAGE TILE OR GRID AS NEEDED
	SUPPLY AIR		2' x 2' ACOUSTICAL CEILING TILE - TO MATCH EXISTING
	RETURN AIR		GYPSUM BOARD CEILING
	EXHAUST AIR		FIRE ALARM / STROBE
	L.E.D. TROFFER INDIRECT/DIRECT LIGHT FIXTURE		CEILING MOUNTED FIRE ALARM
	FLUORESCENT LIGHT		WALL MOUNTED FIRE ALARM
	EMERGENCY LIGHT		FIRE ALARM PULL STATION
	CEILING SPRINKLER		WALL MOUNTED EMERGENCY LIGHT
	SWITCH		EXIT SIGN
	DIMMER SWITCH		WALL MOUNTED EXIT SIGN & EMERGENCY LIGHT COMBO
	DUPLEX OUTLET - WALL MOUNTED		COAXIAL CABLE
	GFI OUTLET - WALL MOUNTED		CAT 6 DATA OUTLET - WALL MOUNTED
	TWIST LOCK 20 AMP OUTLET		CAT 6 DATA OUTLET - FLOOR MOUNTED
	220V OUTLET		SMOKE DETECTOR
	QUADRUPLEX OUTLET - WALL MOUNTED		SPRINKLER
	DUPLEX OUTLET - FLOOR MOUNTED		THERMOSTAT
	BURGLAR ALARM		J BOX
	TIME CLOCK		CAMERA
	PROJECTOR		SMOKE DETECTOR
	CARD READER		AUTOMATIC ADA DOOR OPENER

SK-1B ENLARGED CAFE REFLECTED CEILING PLAN



SK1-B 04/28/2021 2020-09

RIVIERA BEACH LIBRARY - INTERIOR RENOVATION

2129 N CONGRESS AVE
RIVIERA BEACH, FLORIDA 33404



MARJORIE CARRILLO ARCHITECT, P.L.L.C.
ARCHITECTURE | DESIGN