

Commercial Lighting Industries  
81151 Indio Boulevard, Indio, CA 92201  
Tel: 800-755-0155 | Fax: 760-262-3940

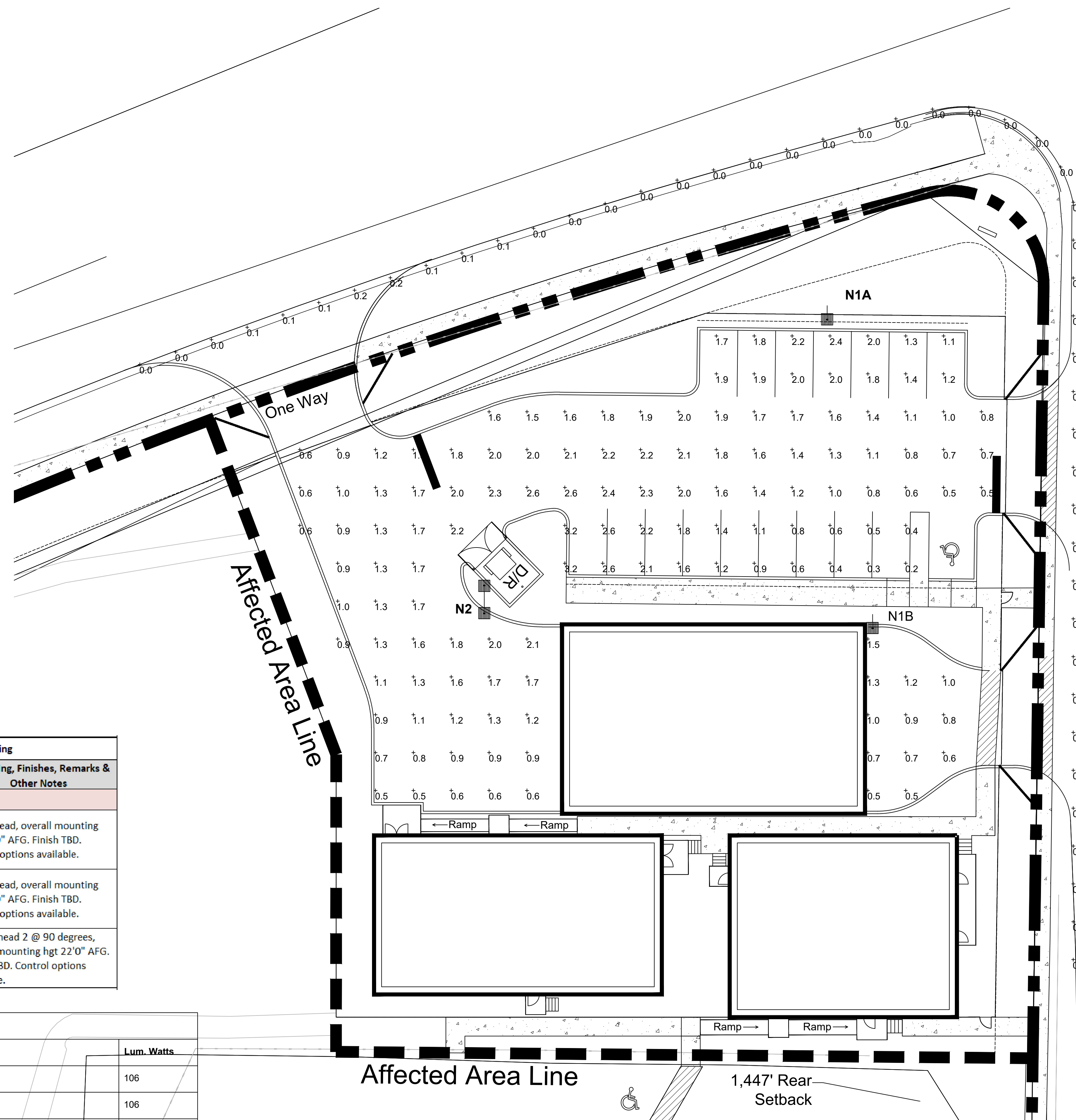
No.	Issue	Date
0.		4.7.2021
1.		4.19.2021

Contact McCay Green with Commercial Lighting Industries, 772-485-0561, McCay@Commercial-Lighting.net for pricing

Fixture Type	Reference Image	Description	Product Registration ID	Lamps, CCT, Lumen, Optics, CRI	Input Voltage	Fixture Wattage	Total Qty	Mounting, Finishes, Remarks & Other Notes
ARCHITECTURAL FIXTURE TYPES								
N1		LED Area Light with type III Distribution	CLI-00AMN1B	LED Integrated, 4000K, 19,188lm, Type Distribution III	UNI-VAC	156	1	Single Head, overall mounting hgt 22'0" AFG. Finish TBD. Control options available.
N1A		LED Area Light with type IV Distribution	CLI-00AMN1A	LED Integrated, 4000K, 18,876lm, Type Distribution IV	UNI-VAC	156	1	Single Head, overall mounting hgt 22'0" AFG. Finish TBD. Control options available.
N2		2-way LED Area Light type V Distribution	CLI-00AMN2	2-LED Integrated, 4000K, 2-19,344lm, Type Distribution V	UNI-VAC	312	1	Double head 2 @ 90 degrees, overall mounting hgt 22'0" AFG. Finish TBD. Control options available.

Symbol	Qty	Label	Arrangement	LLF	Description	Lum. Watts
	1	N2	BACK-BACK	0.950	NV-1-T5-32L-1-40K-TWIN ON 22' POLE W/3' BASE	106
	1	N1A	SINGLE	0.950	NV-1-T4-32L-1-40K-HSS-SINGLE ON 22' POLE W/3' BASE	106
	1	N1B	SINGLE	0.950	NV-1-T4-32L-7-40K-HSS-SINGLE ON 22' POLE W/3' BASE	71

Calculation Summary							
Label	CalcType	Units	Avg	Max	Min	Avg/Min	Max/Min
SPILL LIGHT	Illuminance	Fc	0.05	0.2	0.0	N.A.	N.A.
WHOLE LOT	Illuminance	Fc	1.37	3.2	0.2	6.85	16.00



1 SITE LIGHTING PLAN & PHOTOMETRIC DRAWING  
1/16" = 1'-0"

Temporary FS 87 at  
Wells Res 21-21

ALL PLANS AND SPECIFICATIONS ARE THE PROPERTY OF COMMERCIAL LIGHTING INDUSTRIES. ALL MEASUREMENTS MUST BE CHECKED ON SITE BY THE CONTRACTOR AND ANY DISCREPANCIES BROUGHT TO THE ATTENTION OF THE DESIGNER OR ARCHITECT.

Site  
SITE LIGHTING  
PLAN &  
PHOTOMETRIC  
DRAWINGS

Scale AS SHOWN 4.19.2021  
Drawn By A.M. Checked By I.D.  
Job No.  
Sheet No.

LDE-1