



Section 1.0: Title Page / Table of Contents
City of Riviera Beach
Marine/Coastal Engineering Consulting Services
for the Riviera Beach Marina
RFQ No. 1023-21-2

Response to
Request for Qualifications for
Marine/Coastal Engineering Consulting Services for the Riviera Beach Marina
RFQ No. 1023-21-2

March 24, 2021

Submitted by



Sea Diversified, Inc.
160 Congress Park Drive, Suite 114
Delray Beach, Florida 33445
561.243.4920
www.seadiversified.com

Table of Contents

Section 1.0	Title Page / Table of Contents
Section 2.0	Executive Summary
Section 3.0	Cover Letter / Letter of Transmittal
Section 4.0	Company Profile
Section 5.0	Qualifications of the Firm
Section 6.0	Experience of the Firm
Section 7.0	Approach and Methodology
Section 8.0	Availability
Section 9.0	References

Appendices

Appendix A: City Forms

- Bidder's Certification
- Addendum Page – Addendums
- Drug Free Workplace
- Notification of Public Entities Crime

Appendix B: Sea Diversified Licenses & Certifications

- Professional Engineering License – William T. Sadler Jr., P.E., P.S.M.
- Professional Surveying and Mapper License – Sea Diversified, Inc.
- Professional Surveying and Mapper License – William T. Sadler Jr., P.E., P.S.M.
- Palm Beach County Small Business Enterprise (SBE) Certification – Sea Diversified, Inc.
- South Florida Water Management District Small Business Certification – Sea Diversified, Inc.
- 2021 Corporate Registration – Sea Diversified, Inc.

Appendix C: Additional Information – Representative Projects - Sea Diversified, Inc.

Sea Diversified, Inc.
160 Congress Park Drive, Suite 114
Delray Beach, Florida 33445
561.243.4920
www.seadiversified.com





Section 2.0: Executive Summary
City of Riviera Beach
Marine/Coastal Engineering Consulting Services
for the Riviera Beach Marina
RFQ No. 1023-21-2

Sea Diversified, Inc. (SDI) specializes in marine / coastal engineering services with specific expertise in the design, permitting and construction of marinas similar in scope and complexity to the City of Riviera Beach Marina. **SDI**, strategically located in Palm Beach County, is a Certified Small Business Enterprise (SBE) in Palm Beach County and is licensed by the Florida Board of Professional Engineers and Florida Board of Professional Surveyors and Mappers. **SDI** has the in-house capabilities to support marina improvement and other marine construction projects through all phases starting with the initial program development phase, through planning, permitting, design and ultimately through construction. We are also one of the few firms in the State that offers in-house hydrographic and topographic survey expertise and underwater marine inspectors to support design, permitting and construction activities.

SDI is currently the Marine/Coastal Engineering Consultant for the City of Riviera Beach and for the past eleven (11) years has designed, permitted and administered all of the improvements to the City marina to date. To date marina improvements have encompassed well over 20 million construction dollars and have included the complete reconstruction and expansion of the original 1970's marina resulting in one of the best marinas in the State of Florida. Presently, the marina can accommodate well over one hundred (100) vessels of all sizes and types with extensive marginal dockage for transient boaters wishing to visit Riviera Beach and other areas of Palm Beach County. Moving ahead, **SDI** has designed and initiated the State and Federal permitting process for the next or fourth phase of major improvements adding significant dockage for mega / super yachts and other facilities.

SDI has proudly supported other municipalities and governmental agencies with similar marina and waterfront redevelopment and improvement programs, including but not limited to the Village of North Palm Beach, City of Boynton Beach, City of Fort Lauderdale, City of Boca Raton, City of Pahokee, City of Pompano Beach, City of Deerfield Beach, City of Sunrise, City of Plantation, City of Daytona Beach, City of Holly Hill and the City of Bradenton. Sea Diversified has additionally supported major private marina development programs such as the Las Olas Marina in Fort Lauderdale, Marinemax Marinas in Stuart and Pompano Beach, Hi-Lift Marina in Aventura, Turnberry Isles Marina in Aventura, Jockey Club Marina in Miami, Bluetide Marina in Daytona Beach, Marina Grande Marina in Holly Hill, Buccaneer Marina in Palm Beach Shores, Hawks Cay Marina in Duck Key, Florida Keys, Miami Beach Marina, and numerous others around the State of Florida.

In summary, **SDI** is a marine / coastal engineering firm that specializes in marinas, marine structures and related engineering disciplines. We self-perform multi-beam bathymetric and topographic surveys; boundary and State Submerged Lands Lease surveys; underwater inspections and other dive investigations; current, wave and tide studies; state and federal environmental permitting; and construction administration services. As demonstrated in this response to the RFQ, **SDI** has compiled a qualified Team to support all services referenced in the Statement of Work. **The point of contact for any questions regarding this response to the RFQ is William T. Sadler Jr., P.E., P.S.M., President of SDI, 160 Congress Park Drive, Suite 114, Delray Beach, Florida (561-243-4920), email: wts@seadiv.com.**



Section 3.0: Cover Letter / Letter of Transmittal
City of Riviera Beach
Marine/Coastal Engineering Consulting Services
for the Riviera Beach Marina
RFQ No. 1023-21-2

March 24, 2021

Ms. Althea Pemsel, MS, CPSM
Director of Procurement, City of Riviera Beach
600 West Blue Heron Boulevard, Suite #140
Riviera Beach, FL 33404

Re: Statement of Qualifications and Experience
Marine/Coastal Engineering Consulting Services
For the Riviera Beach Marina
RFQ No. 1023-21-2
Sea Diversified Proposal Number 21-2924

Dear Ms. Pemsel:

In response to the referenced Request for Qualifications (RFQ) issued by the City of Riviera Beach Purchasing Division, Sea Diversified, Inc. is pleased to submit the following **Letter of Transmittal**, one (1) Original, four (4) hardcopies, and (2) electronic copies on USB drives of our **Statement of Qualifications** for professional marine / coastal engineering services.

Sea Diversified, strategically located in Palm Beach County since their inception, is a Certified Small Business Enterprise (SBE) in Palm Beach County and is licensed by the Florida Board of Professional Engineers and Florida Board of Professional Surveyors and Mappers. Sea Diversified specializes in marine / coastal engineering services with specific expertise in the design, permitting and construction of new marinas including retrofits similar in scope and complexity to the City of Riviera Beach Marina. Sea Diversified is uniquely qualified as the firm has been, and is currently, the Marine/Coastal Engineering Consultant for the City of Riviera Beach and over the past eleven (11) years has designed, permitted and administered all of the improvements to the City marina to date with construction ongoing, at present, as part of the third phase of major marina upgrades. Additionally, Sea Diversified has designed and initiated the State and Federal permitting process for the next or fourth phase of major marina improvements.

In response to the RFQ, Sea Diversified has compiled a team of in-house professional marine / coastal engineers and support staff to meet the requirements of the project. William T. Sadler Jr., P.E., P.S.M., president and founder of Sea Diversified and also a Palm Beach County resident for over twenty-five (25) years, will be the Project Manager and primary point-of-contact for the City of Riviera Beach (wts@seadiversified.com). Sea Diversified has also incorporated as part of their team several specialty subconsultants to add or enhance the range of services offered by the firm. This includes coastal engineers that specialize in numerical modeling of tidal lagoons, environmental specialists and marina electrical / mechanical engineers. We are proud to have this supplemental and complimentary expertise as part of our team and are confident these team members will provide only the highest level of professional services under the direction of Sea Diversified for this contract.

Sea Diversified, Inc.
160 Congress Park Drive, Suite 114
Delray Beach, Florida 33445
561.243.4920
www.seadiversified.com





Section 3.0: Cover Letter / Letter of Transmittal
City of Riviera Beach
Marine/Coastal Engineering Consulting Services
for the Riviera Beach Marina
RFQ No. 1023-21-2

Sea Diversified has prepared the following qualifications package to demonstrate our level of experience and capacity to support all levels of services required for the project. To the best of our knowledge, *all information contained in this RFQ submittal is complete and accurate.* Additionally, *we grant the City and its representatives authorization to contact any previous client of Sea Diversified or any team member for purposes of ascertaining an independent evaluation of Sea Diversified's or any team member's performance.* *This proposal was prepared without collusion with any other person or entity submitting a proposal pursuant to this RFQ.*

The Sea Diversified Team has the qualifications, resources and level of experience to meet or exceed that required by the City of Riviera Beach under this contract. We have demonstrated our ability to support the City since 2010, providing design, permitting and construction administration services in support of over \$20 million in marina improvements. Sea Diversified self-performs all required field work associated with marina and other marine construction projects including but not limited to bathymetric and topographic surveys, boundary and State Submerged Lands Lease surveys, underwater inspections and other dive investigations, current, wave and tide studies and environmental studies.

We have reviewed and understand the scope of services outlined in the Solicitation and are committed to performing all assignments to the highest level of professionalism. Our objective is to work effectively with City staff and other consultants involved in the project and continue to develop and expand the City Marina into a world class facility. Sea Diversified is a small organization but very focused on the industry we support. We strive for excellence in performance and client satisfaction.

Thank you very much for your consideration.

Sincerely,

A handwritten signature in blue ink, appearing to read "W. Sadler".

William T. Sadler Jr., P.E., P.S.M.

President

Sea Diversified, Inc.



Section 4.0: Profile of the Firm
City of Riviera Beach
Marine/Coastal Engineering Consulting Services
for the Riviera Beach Marina
RFQ No. 1023-21-2

Consultant: **Sea Diversified, Inc.**
160 Congress Park Drive, Suite 114
Delray Beach, Florida 33445
561-243-4920 (Phone)
wts@seadiversified.com (E-Mail)

Organizational Structure: **William T. Sadler Jr., P.E., P.S.M.**
Owner / President
State of Florida Corporation – Incorporated 2004

Contact Person – Primary: **William T. Sadler Jr., P.E., P.S.M.**

Company History

Sea Diversified, Inc. (SDI), established in 2004, is a privately owned and operated multi-disciplinary marine / coastal engineering and surveying firm with established offices in Delray Beach (Palm Beach County), Florida. **SDI** was founded by William T. Sadler Jr., P.E., P.S.M., a long time resident of Palm Beach County who was joined by officers and key personnel that have worked together for over twenty (20) years in the engineering and surveying industry. Mr. Sadler is a graduate of Florida Atlantic University with a B.S. in Ocean Engineering and is currently licensed as a Professional Engineer and Professional Surveyor and Mapper in the State of Florida. **SDI** is licensed by the State of Florida Board of Professional Engineers and Professional Surveyors and Mappers. **SDI** is a Certified Small Business Enterprise (**SBE**) in Palm Beach County.

SDI was originally founded and continues to specialize in the fields of marine / coastal engineering, surveying and environmental sciences. Services offered by **SDI** include marine / coastal engineering and permitting services; marina and waterfront planning and design; above and below-water engineering inspection of marine structures; wave, current and tide studies; shoreline change assessment; bathymetric and topographic surveying and mapping; environmental sciences; sediment studies and subsurface material classification; subaqueous utilities mapping; construction administration.

Principals, officers and support personnel of **SDI** have provided marine / coastal engineering, environmental and survey services throughout the State of Florida including numerous islands of the Caribbean. **SDI** has provided services to multiple Municipalities and Counties including but not limited to the City of Riviera Beach, Town of Palm Beach, City of North Palm Beach, City of Boynton Beach, City of Pahokee, City of Boca Raton, City of Pompano Beach, City of Plantation, City of Deerfield Beach, City of Fort Lauderdale, City of Holly Hill, City of Daytona, City of Bradenton, City of Sanibel, Palm Beach County, Miami-Dade County, Martin County and Lee County. **SDI** has provided services to other governmental agencies such as the Florida Inland Navigation District, Florida Department of Transportation, National Park Service and the South Florida Water Management District.

Sea Diversified, Inc.
160 Congress Park Drive, Suite 114
Delray Beach, Florida 33445
561.243.4920
www.seadiversified.com





Section 4.0: Profile of the Firm
City of Riviera Beach
Marine/Coastal Engineering Consulting Services
for the Riviera Beach Marina
RFQ No. 1023-21-2

Areas of Technical Specialization

Marine / Coastal Engineering

- **Marina Planning, Permitting, Design and Construction**
 - Slip Mix Development and Berthing Layout
 - Basin Design, Ingress / Egress and Wave Protection
 - Floating versus Fixed Dock Analysis
 - Utility Infrastructure and Fuel Systems
 - Upland and Waterside Amenities
 - ADA Compliance
 - Marina Operations and Maintenance
- **Marine Structures – Design and Construction**
 - Seawalls
 - Docks and Piers – Fixed and Floating
 - Breakwaters
 - Revetments and Shoreline Stabilization
- **Dredging and Dredged Material Handling**



Environmental

- **Environmental Studies**
- **State and Federal Permitting**

Field Investigations for Planning, Design and Permitting

- **Underwater Inspection of Marine Structures**
- **Seabed Classification**
- **Side Scan Sonar**
- **Magnetometer**
- **Sub-Bottom Profiling and Sediment Sampling**
- **Current, Wave and Tide Studies**

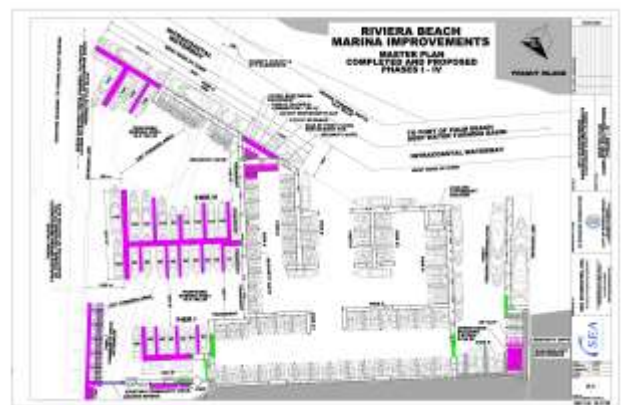


Surveying and Mapping

- **Automated Hydrographic – Single and Multi-Beam**
- **Topographic**
- **Boundary including State Submerged Land Lease/Easement**
- **Construction Stake-out and As-builts**

Marine / Coastal Engineering

SDI's marine engineering capabilities begin with a sound understanding of the marine environment. This understanding is crucial for gathering data for the proper design of marine structures. This fundamental understanding, combined with **SDI's** extensive experience working in and around the coastal and marine environment, allows **SDI** to plan and design waterfront facilities and structures under the most unique and dynamic conditions. Criteria such as wind, storm surge, wave forecasting, corrosion, erosion, soil stratification of shorelines, ship impacts, facility infrastructure and utility needs apply, along with sound engineering principles, are all factored in to **SDI** designs, as





Section 4.0: Profile of the Firm
City of Riviera Beach
Marine/Coastal Engineering Consulting Services
for the Riviera Beach Marina
RFQ No. 1023-21-2

applicable, with the objective that structures require minimum maintenance and maintain a useful life expectancy of at least 50 years. Our designs include marinas with fixed and floating docks; boat ramps; piers and lake walks and shoreline protection such as seawalls, rock revetments and breakwaters.

Representative Marina Projects - Public

- Riviera Beach Municipal Marina - Palm Beach County, Florida
- Village of North Palm Beach Marina - Palm Beach County, Florida
- City of Bradenton Twin Dolphin Marina – Manatee County, Florida
- Boynton Harbor Marina - Palm Beach County, Florida
- Hillsboro Fishing Club, Pompano Beach, Florida
- Pahokee Marina - Palm Beach County, Florida
- Fort Lauderdale / Suntex Las Olas Marina - Broward County, Florida
- Miami Beach Marina – Suntex – Miami-Dade County, Florida
- Fort Lauderdale Riverfront Day Dockage - Broward County, Florida
- City of Eustis Marina – Orange County, Florida



Marina Projects - Private

- Buccaneer Marina – Palm Beach Shores, Palm Beach County, Florida
- Marinemax – Stuart, Martin County, Florida
- Moss Marina – Lee County, Florida
- Hawks Cay Resort Marina, Monroe County, Florida
- Harbor Village Marina - Ponce Inlet, Volusia County, Florida
- Loggerhead Marina – Palm Beach, Florida
- Turnberry Isles Marina – Miami-Dade County, Florida
- Jockey Club Marina - Miami-Dade County, Florida
- Marina Grande - Miami-Dade County, Florida
- Marina Grande – Volusia County, Florida
- Bluetide Marina - Volusia County, Florida
- Gundlach’s Marina Expansion – Palm Beach County, Florida
- Ocean Cove Marina – Palm Beach County, Florida
- The Symphony Marina – Broward County, Florida
- Grand Harbor Marina – Martin County, Florida
- Blackpoint Marina – Miami-Dade County, Florida
- Marina Village – Palm Beach County, Florida
- The Waterways Marina – Miami-Dade County, Florida
- Frenchman’s Marina - Palm Beach County, Florida
- Hacienda Cove Marina – Broward County, Florida



Representative Seawall Projects

- Riviera Beach Marina - Palm Beach County, Florida
800 lf steel sheetpile seawall, helical anchors & concrete cap
- City of Holly Hill Sunrise Park, Volusia County, Florida
590 lf vinyl sheetpile seawall, tie-backs & concrete cap
- City of Pompano Beach Alsdorf Park, Broward County, Florida
370 lf of steel sheetpile seawall, helical anchors & concrete cap
- The City of Pompano Beach Public Parks, Florida
450 lf of concrete panel seawall, king/batter piles & concrete cap
- Las Olas Marina, Suntex, Broward County, Florida
800 lf steel sheetpile seawall, batter piles & concrete cap
- Dolphin Beach Club, Volusia County, Florida



Sea Diversified, Inc.
160 Congress Park Drive, Suite 114
Delray Beach, Florida 33445
561.243.4920
www.seadiversified.com





Section 4.0: Profile of the Firm
City of Riviera Beach
Marine/Coastal Engineering Consulting Services
for the Riviera Beach Marina
RFQ No. 1023-21-2

- 110 lf steel sheetpile seawall, helical anchors & concrete cap
- Pahokee Marina - Palm Beach County, Florida
- 300 lf steel sheetpile seawall, batter piles & concrete cap
- NASA Jay Jay Railroad – Brevard County, Florida
- 300 lf steel sheetpile seawall, tie-backs & concrete cap
- Loggerhead Marina - Riviera Beach, Florida
- 800 lf concrete panel seawall, king/batter piles & concrete cap
- Loggerhead Marina – Palm Beach Gardens, Florida
- 1000 lf concrete seawall restoration
- Marina Grande - North Miami Beach, Florida
- 2200 steel sheetpile seawall, batter piles & concrete cap
- Ocean Cove Marina - Highland Beach, Florida
- 600 lf of vinyl sheetpile seawall with auger-cast pile support
- The Symphony Marina - Fort Lauderdale, Florida
- 400 lf steel sheetpile seawall with concrete cap and batter piles
- The Peninsula – Boynton Beach , Florida
- 1000 lf of steel sheetpile seawall with helical tie-back system
- Harbor Village Marina - Ponce Inlet, Volusia County, Florida
- 2000 lf of steel sheetpile seawall with steel tension pile supports



Representative Dredging Projects

- City of Riviera Beach Marina Basin Dredging
- City of Pahokee Marina Basin Dredging
- City of Pompano Beach Canal Maintenance Dredging Program
- City of Lighthouse Point Canal Maintenance Dredging Program
- City of Plantation Canal Maintenance Dredging Program
- City of Deerfield Beach Canal Maintenance Dredging Program
- City of Dania Canal Maintenance Dredging Program
- City of Bradenton, Twin Dolphin Marina Dredging
- Marinemax – Stuart Marina Dredging
- Marinemax – Pompano Marina Dredging
- Bluetide – Daytona Marina Dredging
- Las Olas Marina Dredging, Fort Lauderdale
- Loggerhead Marina Basin Dredging
- Marina Village Basin Dredging
- Harbor Village Marina and Entrance Dredging
- Royal Palm Marina and Yacht Club Basin Dredging



Other Services

- Environmental Studies
- Environmental Permitting
- Field Investigations for Planning Design and Permitting
- Engineering Inspections and Dive Services
- Seabed Classification
- Side Scan Sonar Survey
- Magnetometry
- Sub-Bottom Profiling and Sediment Sampling



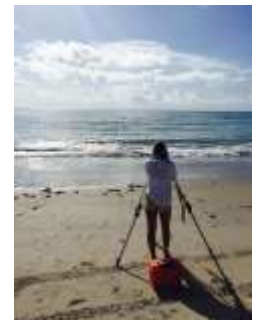
Sea Diversified, Inc.
160 Congress Park Drive, Suite 114
Delray Beach, Florida 33445
561.243.4920
www.seadiversified.com





Section 4.0: Profile of the Firm
City of Riviera Beach
Marine/Coastal Engineering Consulting Services
for the Riviera Beach Marina
RFQ No. 1023-21-2

- Current, Wave and Tide Studies
- Surveying and Mapping
- Hydrographic Surveys
- Survey Support for Detailed Design and Construction
- Construction Layout and Alignment Surveys
- Real Estate Boundary, Tidal and Sovereign Submerged Lands Surveys



Honors and Awards

SDI strives for client satisfaction as reputation relating to repeat business, referrals and long-term relationships with clientele is the key to success of our organization. We are proud of our accomplishments and are awarded by successful completion of a project that fulfills or exceeds the expectations and goals of our clients. **SDI** has partnered with other public entities on numerous marine and coastal projects including several recent and ongoing marina improvement projects. Included in the Appendices are Letters of Recommendation we received from a few entities that describes our involvement and performance on their projects.

Location of Home and Branch Offices

SDI home offices are located in Delray Beach, Palm Beach County, Florida. All services pertaining to the City of Riviera Beach Marina Improvement Project including other services requested under this contract will be administered through our corporate offices in Palm Beach County.

Name of Principal Officers of the Firm

William T. Sadler Jr., P.E., P.S.M. is the sole Owner and President of **SDI**.

Sea Diversified, Inc.
160 Congress Park Drive, Suite 114
Delray Beach, Florida 33445
561.243.4920
www.seadiversified.com





Section 5.0: Qualifications
City of Riviera Beach
Marine/Coastal Engineering Consulting Services
for the Riviera Beach Marina
RFQ No. 1023-21-2

SDI shall provide trained and experienced personnel to support the requirements of these marine/coastal engineering efforts for improvements to the Riviera Beach Marina. William T. Sadler Jr., P.E., P.S.M., President and founder, has over thirty (30) years of experience related to large and small-scale marine engineering projects and specializes in marina design and permitting. Mr. Sadler, a licensed Professional Engineer and Florida Professional Surveyor and Mapper, will be in responsible charge of this project and the primary point of contact for representatives of the City pertaining to both contractual and project related matters. Mr. Sadler has assumed this role on previous contracts with the City of Riviera Beach beginning in 2010.

Mr. Sadler is supported by key staff members that have worked together for over twenty (20) years in the marine industry with the past eleven (11) years directly involved with improvements to the Riviera Beach Marina. Key staff members are comprised of engineers and survey managers, computer technicians and sufficient field support staff that are experienced and trained in marina development and related disciplines. A summary of the Key **SDI** Team members are as follows:

Sea Diversified, Inc.

William T. Sadler, Jr., P.E., P.S.M., President and founder of **SDI**, will serve as Project Manager for this contract. Mr. Sadler has served as Project Manager on multiple municipal contracts encompassing similar marine/coastal engineering and related services for municipalities such as the City of Riviera Beach, City of Holly Hill, City of Pompano Beach, City of Bradenton, Village of North Palm Beach, City of Boca Raton, City of Fort Lauderdale and the City of Pahokee. For this contract, Mr. Sadler will coordinate all tasks including contract negotiations, development of schedules, monitoring field and office operations, and reviewing final products prior to delivery. He will serve as the point-of-contact between **SDI**, City of Riviera Beach and subconsultants, and shall ensure that projects are completed on time and within budget. These responsibilities are key to any project and are considered essential to assure that objectives are met and a sound client – contractor relationship is continuously maintained.

Environmental Sciences Sub-Consultant – Pinnacle Ecological, Inc.

Pinnacle Ecological, Inc. (PEI) shall assist **SDI** with the environmental challenges that are inherent to most marine-related projects. This includes environmental studies in support of marina and other marine/coastal design projects, assistance with environmental permitting, mitigation planning and design, and participation with environmental regulatory agency coordination efforts. Mr. Fitzgerald, Owner and CEO of **PEI**, has over 30-years of experience in marine / coastal environmental sciences and related disciplines. His firm has supported **SDI** with these services through several completed phases of the Riviera Beach Marina improvement efforts including numerous other **SDI** marina development projects around the State of Florida.

Coastal Engineering Sub-Consultant – Humiston and Moore Engineers

To supplement **SDI**'s marine/coastal engineering experience and capabilities, **SDI** incorporated as part of the team **Humiston and Moore Engineers (H&M)**. **H&M** is a coastal engineering firm with an extensive degree of experience in coastal engineering projects including the design, permitting and construction management of coastal projects. **H&M** has specific experience with hydraulic modeling

Sea Diversified, Inc.
160 Congress Park Drive, Suite 114
Delray Beach, Florida 33445
561.243.4920
www.seadiversified.com





Section 5.0: Qualifications
City of Riviera Beach
Marine/Coastal Engineering Consulting Services
for the Riviera Beach Marina
RFQ No. 1023-21-2

and numerical modeling of nearshore waves and currents and was the firm that performed wind, wave and current study serving as the basis for the current fixed and floating dock design at the Riviera Beach Marina. **SDI** has worked extensively with **H&M** with close to over a hundred projects completed jointly throughout the State of Florida and Caribbean Islands. We are pleased to have **H&M** as part of the and this organization will be available to assist the City with any coastal engineering and wave modeling requirements.

Electrical Engineering Sub-Consultant – Brannon & Gillespie, LLC

Electrical and specifically the proper design of marina power distribution systems is critical to any marina improvement project. **Brannon & Gillespie, LLC (B&G)** is an electrical engineering firm that specializes in the design of marina electrical and lighting systems and has been on the **SDI** team through all phases of the Riviera Beach Marina improvement program since 2010. **B&G** has extensive knowledge of vessel power requirements ranging from small outboard size craft to large mega-yachts. Danny Brannon, P.E., President of **B&G** and former Project Engineer for FPL, has many years of experience working with FPL to resolve marina power infrastructure needs and understands the complicated and many times challenging process of bringing FPL onboard to effectively support a marina development project. In addition to the Riviera Beach Marina project, **SDI** has worked with **B&G** on numerous marina projects around the State including the Anchorage Park Marina for the Village of North Palm Beach, Marinemax – Stuart Marina, City of Holly Hill Municipal Fishing Pier, Hawks Cay Marina in Duck Key – Florida Keys, Boynton Beach Marina, Loggerhead Marina in Riviera Beach, Marina Grande Marina in Holly Hill and the Las Olas Marina in Fort Lauderdale.

Key Support Staff:

Project Engineers / Management Team:

William T. Sadler, Jr., P.E., P.S.M. – SDI Project Manager

Education:

- Florida Atlantic University
- B.S. Ocean Engineering, 1984

Professional Registration

- Professional Engineer, Florida 1989, PE41184
- Professional Surveyor and Mapper, Florida, 1998, LS5859

Corporate Experience:

- Sea Diversified, Inc. – Surveying & Engineering
 - President / Owner
 - 2004 to Present
- Sea Systems Corporation – Surveying & Engineering
 - Owner – Professional Engineer
 - 1990 – 2004
- Keith & Schnars, P.A.
 - Engineer, Director of Business Development
 - 1986 - 1990



Section 5.0: Qualifications
City of Riviera Beach
Marine/Coastal Engineering Consulting Services
for the Riviera Beach Marina
RFQ No. 1023-21-2

Neil Wood – SDI Project Engineer

Education:

- Florida Atlantic University
- B.S. Ocean Engineering, 2006

Corporate Experience:

- Sea Diversified, Inc. – Surveying & Engineering
 - Project Engineer
 - 2009 to Present
- Coastal Planning & Engineering – Surveying & Engineering
 - Coastal Engineer
 - 2006 - 2009

Mohamed A. Dabees, PHD, PE, D. CE, Vice President – Coastal Engineer

Education:

- Ph.D. Civil Engineering, Queens University, 2000
- M.S. Civil Engineering, Drexel University, 1995
- M.S. Engineering Management, Drexel University, 1995
- B.S. Civil Engineering, Alexandria University, 1988

Professional Registration:

- Professional Engineer, Florida, PE58003

Corporate Experience:

- Humiston & Moore Engineers – Coastal Engineering
 - Vice President
 - 2000 - Present

Marc Damon, M.sc, P.E. – Coastal Engineer

Education:

- M.S. Coastal Engineering, Florida Institute of Technology, 2003
- B.S. Ocean Engineering, Florida Institute of Technology, 2001

Professional Registration:

- Professional Engineer, Florida, PE70615

Corporate Experience:

- Humiston & Moore Engineers – Coastal Engineering
 - Coastal Engineer
 - 2004 - Present

Danny Brannon P.E. – Electrical Engineer

Education:

- BSEE Electrical Engineering, Auburn University, 1973

Professional Registration:

- Professional Engineer, Florida, PE25601

Corporate Experience:

- Brannon & Gillespie – Electrical Engineering
 - Electrical Engineer
 - 2001 - Present



Section 5.0: Qualifications
City of Riviera Beach
Marine/Coastal Engineering Consulting Services
for the Riviera Beach Marina
RFQ No. 1023-21-2

Randy Foltz – SDI Project Manager

Education:

- Bachelor of Architecture, Arizona State University

Professional Registration:

- Architect Alaska #A486, Hawaii, #678, NCARB #47911

Corporate Experience:

- Sea Diversified – Project Manager
 - 2019 - Present

Paul Fitzgerald – Marine Biologist

Education:

- Master of Science (Candidate) Marine Biology, Nova Southeastern University (NSU), 2015
- Master of Science (Candidate) Coastal Zone Management, NSU, 2015.
- Bachelor of Science, Marine Biology, Texas A&M University, 1992

Professional Affiliations:

- American Association of Underwater Scientists (AAUS) 1991 to 2013.
- Professional Association of Diving Instructors (PADI), 1989 to 2013
- National Association of Environmental Professionals (NAEP), 2008 to 2013
- Florida Association of Environmental Professionals (FAEP), 2008 to 2013

Corporate Experience:

- Pinnacle Ecological, Inc. – Marine Sciences
 - Marine Biologist – Managing Director
 - 2007 - Present
- Continental Shelf Associates, Inc.
 - Project Manager and Staff Scientist
 - 1994 – 2007
- Texas A&M University
 - Research Specialist and Diving Supervisor

SDI Project Survey Staff:

Ronald Ball – SDI Survey Manager

Scott McNeil – SDI Field Supervisor

Timothy Thomas – SDI Field Technician



Section 6.0: Experience
City of Riviera Beach
Marine/Coastal Engineering Consulting Services
for the Riviera Beach Marina
RFQ No. 1023-21-2

1. Client	2. Project Description	3. Total Construction Cost
City of Riviera Beach 200 E. 13th Street Riviera Beach, FL 33404	Riviera Beach Municipal Marina Redevelopment Reconstruction and expansion of the City Marina with over 100 slips to date. Project included demolition of existing structures and installation of new fixed & floating docks with breakwater, new bulkhead, marina utilities, fuel system and upland amenities. Project also included dredging, upland utilities and promenade.	\$25,000,000+/- (to-date)
4. Contact	5. Scope of Services	6. Professional Service Fees
Mr. John Sprague - Marina Consultant (561) 723-5418 sprague.miaf@me.com	Planning, design, permitting & construction management. Topographic / bathymetric surveying, underwater inspections, submerged utility locations	\$1,250,000
7. Contract Duration	8. Statement of Completion	
2010 – 2021	Phase I and Phase II have been completed on-time and within City budgets	

1. Client	2. Project Description	3. Total Construction Cost
Village of North Palm Beach 645 Prosperity Farms Road North Palm Beach, FL 33408	Anchorage Park Marina Reconstruction Project Reconstruction of a 32-slip marina located at the Anchorage Park. Project included demolition of existing structures and installation of new aluminum frame floating docks with ADA gangways. Project also included replacement of boat ramp staging docks and installation of a kayak floating platform.	\$350,000
4. Contact	5. Scope of Services	6. Professional Service Fees
Mr. Chuck Huff Public Works Director (561) 904-2139 chuff@village-npb.org	Planning, design, permitting & construction management, topographic / bathymetric surveying, environmental permitting	\$30,000
7. Contract Duration	8. Statement of Completion	
2019	Project completed on-time and within budget	

Sea Diversified, Inc.
160 Congress Park Drive, Suite 114
Delray Beach, Florida 33445
561.243.4920
www.seadiversified.com





Section 6.0: Experience
City of Riviera Beach
Marine/Coastal Engineering Consulting Services
for the Riviera Beach Marina
RFQ No. 1023-21-2

1. Client	2. Project Description	3. Total Construction Cost
CWI Keys Hotel, LLC c/o Watermark Lodging Trust 150 North Riverside Plaza, Suite 4200 Chicago, IL 60606	Hawks Cay Resort and Marina, Duck Key, Florida Keys Reconstruction of a 48-slip resort marina that was devastated during Hurricane Irma. Project included reconstruction of timber frame main and finger piers, boardwalks, steel sheetpile bulkhead and replacement of utilities.	\$2,200,000
4. Contact	5. Scope of Services	6. Professional Service Fees
Mr. Lorcan Drew VP, Asset Management (847) 482-8600 drew@watermarklodging.com	Marine Engineering, Inspection of Existing Facilities, Environmental Permitting, Construction Administration, Hydrographic Surveys, Side Scan Sonar Mapping, Drone Mapping	\$350,000
7. Contract Duration	8. Statement of Completion	
2018 - 2021	Project completed on-time and within budget	

1. Client	2. Project Description	3. Total Construction Cost
HHA Borrower, LLC C/O Glenmont Capital Management 1345 Avenue of the Americas, 42 nd Floor New York, NY 10105	Marina Grande – Holly Hill Reconstruction of the resort marina access pier that was devastated during Hurricane Irma. The project included demolition of existing structures and utilities and replacement of an aluminum frame fixed pier with composite decking supported by concrete piles.	\$750,000
4. Contact	5. Scope of Services	6. Professional Service Fees
Mr. Lawrence Urman (212) 582-2500 lurman@glenmontcapital.com	Marine Engineering, Inspection of Existing Facilities, Environmental Permitting, Construction Administration, Hydrographic Surveys, Drone Mapping	\$150,000
7. Contract Duration	8. Statement of Completion	
2017-2018	Project completed on-time and within budget	

Sea Diversified, Inc.
160 Congress Park Drive, Suite 114
Delray Beach, Florida 33445
561.243.4920
www.seadiversified.com





Section 6.0: Experience
City of Riviera Beach
Marine/Coastal Engineering Consulting Services
for the Riviera Beach Marina
RFQ No. 1023-21-2

1. Client	2. Project Description	3. Total Construction Cost
City of Bradenton Public Works and Utilities 300 6 th Street West Bradenton, FL 34205	Twin Dolphin Marina Reconstruction Project Reconstruction of a 100-slip marina using aluminum frame and concrete floating docks supported by steel piles. Scope of work included demolition of old fixed and floating docks, and installation of floating docks, marina utilities and dredging.	\$6,000,000
4. Contact	5. Scope of Services	6. Professional Service Fees
Mr. Ralph Ward, CPSM (941) 741-7502 ralph.ward@cityofbradenton.com	Planning, design, permitting & construction management, topographic / bathymetric surveying, environmental permitting	\$125,000
7. Contract Duration	8. Statement of Completion	
2016-2020	Project was completed successfully on-time and within budget	

1. Client	2. Project Description	3. Total Construction Cost
City of Holly Hill 1065 Ridgewood Avenue Holly Hill, FL 32117	Riverside Park Fishing Pier Construction Construction of a fixed aluminum frame pier with two (2) fishing platforms supported by concrete piles. The project included shelters and ADA aluminum railing.	\$550,000
4. Contact	5. Scope of Services	6. Professional Service Fees
Mr. Steven Juengst (386) 248-9463	Planning, design, environmental permitting, topographic / bathymetric surveying	\$40,000
7. Contract Duration	8. Statement of Completion	
2014	Project was completed successfully on-time and within budget	





Section 7.0: Approach and Methodology
City of Riviera Beach
Marine/Coastal Engineering Consulting Services
for the Riviera Beach Marina
RFQ No. 1023-21-2

SDI has been the marine/coastal engineering consultant for the City of Riviera Beach since 2010 and, as such, understands the extent of work completed to date and work presently ongoing at the marina. **SDI** also developed the master plan for the future expansion of the marina including other proposed improvements to the existing facility. **SDI**'s methods and approach to marina reconstruction / development programs, developed through multiple years of experience, will be applied to future improvements at the Riviera Beach , which include the following tasks:

- Evaluation of existing facilities, marine structures and utility infrastructure
- Field data collection including bathymetric / topographic survey data, current and wave data and geotechnical data
- Marina planning and layout factoring in vessel size, type and use, non-tenant vessel accessibility and transient berthing; prevailing winds, currents and waves as relating to marina ingress/egress, slip orientation and wave protection; environmental conditions /constraints and permitting feasibility, State Sovereign Submerged Lands matters; location and availability of utility infrastructure, parking and vehicular /pedestrian access; consistency with adjacent upland uses; security and ADA conformity
- Design development and product selection
- Marine structural design and analysis
- State and Federal Environmental Permitting
- Construction administration
- Marina operations and long-term maintenance

To effectively support the City on projects pertinent to this contract, **SDI** will develop and implement methods to ensure only the highest level of quality control and the fast-tracking of assigned projects. This will begin with designating a Project Manager that will be responsible for initial scope development, delegation of task assignments, monitoring of schedules and review of work products for quality and adherence to City objectives and project scope. The Project Manager will be the primary Point-of-Contact between **SDI** and the City. Specifically, the Project Manager will assume the following responsibilities:

- Meet with the City to gain complete understanding of the project, specifically identifying City goals and objectives, schedule and budget, as applicable
- Project Initiation
- Project Implementation
- Project Deliverables and Closure
- Finalize deliverables, conduct a final QA/QC review and certify.

Quality Control

Ensuring quality control will be the direct responsibility of the Project Manager, but each and every participant on the project will be held responsible for their level of service and work product. Maintaining quality is a team effort and to guarantee only the highest level of quality, **SDI** will delegate personnel or other team consultants to specific tasks based on demonstrated capacity, expertise and experience. **SDI** staff and consultants identified in this response to the RFQ have worked together as a team on previous phases of the Riviera Beach marina improvement project, including other projects, and have a proven record of quality control. This same level of quality control will be implemented on all task order assignments initiated under this contract.



Section 7.0: Approach and Methodology
City of Riviera Beach
Marine/Coastal Engineering Consulting Services
for the Riviera Beach Marina
RFQ No. 1023-21-2

Fast-Tracking Projects

The ability to fast-track projects will be based on effective project management but is also based on the selection of the best team comprised of in-house personnel and outside consultants with capacity, expertise and commitment to the project. **SDI** will establish a realistic and attainable schedule for completion of the project, assign personnel and other resources based on the required tasks, and effectively track projects to ensure compliance with established schedules. Through effective project management, careful selection of support personnel, commitment of resources, great communication and established protocols for reporting and adherence to schedule, fast-tracking of projects is feasible and likely. The **SDI** team has demonstrated the ability to meet strict project schedules, and through their project management abilities combined with dedicated team of professionals and support staff have been able to fast-track specific assignments. This ability of fast-tracking projects will be a proven benefit to the City of Riviera Beach under this contract.

Experience with Public -Sector Clients

SDI's sound approach and methodologies for the design of marinas and marine structures including other marine engineering / surveying assignments has been demonstrated on numerous public-sector projects including projects for the City of Riviera Beach, Town of Palm Beach, City of North Palm Beach, City of Boynton Beach, City of Pahokee, City of Boca Raton, City of Pompano Beach, City of Plantation, City of Deerfield Beach, City of Fort Lauderdale, City of Holly Hill, City of Daytona, City of Bradenton, City of Sanibel, Palm Beach County, Miami-Dade County, Martin County and Lee County.

Professional Qualifications of Individuals Assigned to the Project – See Section 5.0

Documented Effort to Achieve City's 15% Local Participation Goal

SDI, as necessary and deemed practical, will seek local participation on assignments with a 15% local participation goal.

Budget Management

The responsible office for all services required under this contract will be the Corporate offices, located in Delray Beach, Florida. **SDI** takes great pride our ability to respond quickly to our clients' needs. In order to ensure a successful engineering project, project managers, surveyors and engineers will work hand-in-hand to meet budgets, critical paths, and safeguard quality control. Our well-refined team of project managers, engineers, surveyor, designers, computer specialists, and support professionals will outperform, and keep the project on track and within budget.

Processes to Engage Stakeholders

SDI will establish processes to ensure that City staff, consultants and other stakeholders are informed of project status at all time. City staff and specific stakeholders will be invited to participate in meetings, physical or via conference call, to remain informed is all aspects of future marina improvements. **SDI**, will establish communication protocols and, if requested, provide information via **SDI** Website for immediate and remote access to project documents.



Section 8.0: Availability
City of Riviera Beach
Marine/Coastal Engineering Consulting Services
for the Riviera Beach Marina
RFQ No. 1023-21-2

The **SDI Team** has the combined staff resources that can be dedicated to this contract to effectively fulfill the requirements for issued task assignments. The Project Manager, William T. Sadler Jr., P.E., P.S.M., President and Owner of **SDI**, shall be committed to the City for the duration of the contract. **SDI** shall dedicate sufficient staff to support the Project Manager on all assignments and shall ensure that these staff members are available at all times to complete tasks in the most prompt and professional manner. Additionally, **SDI** will insist that all sub-consultants dedicate a sufficient number of employees to this contract and have them available at all times for immediate response to assignments pertaining to their area(s) of expertise.

As demonstrated over the past eleven (11) years supporting the City of Riviera Beach with their marina improvement program, the **SDI Team** will give this contract top priority and will guarantee that work is completed on time, within budget and to the highest level of professional standards.



Section 9.0: References
City of Riviera Beach
Marine/Coastal Engineering Consulting Services
for the Riviera Beach Marina
RFQ No. 1023-21-2

City of Pompano Beach

Attention: Anthony Alhashemi, Project Manager
City of Pompano Beach, Engineering
1201 NE 5th Avenue
Pompano Beach, FL 33060
954-786-4029
Anthony.Alhashemi@copbfl.com

City of Holly Hill

Attention: Steve Juengst, Administration Manager
Department of Public Works
453 LPGA Blvd
Holly Hill, Florida 32117
(386) 248-9463
sjuengst@hollyhillfl.org

Village of North Palm Beach

Attention: Chuck Huff, Public Works Director
645 Prosperity Farms Road
North Palm Beach, FL 33408
(561) 904-2139
chuff@village-npb.org

Bluegreen Vacations Corporation

Attention: Mark Garro, Vice President, Resort Engineering and Reserves
The Fountains - Lake Eve
12388 South International Drive
Orlando, FL 32821
Mobile: 407.902.5047
mark.garro@bluegreenvacations.com

MarineMax

Attention: Sam Lowrey, Vice President of Real Estate
2600 McCormick Drive, Suite 200
Clearwater, Florida 33759
(727)-531-1700
Sam.Lowrey@MarineMax.com

Note: Letters of Recommendations included in the Appendix

Sea Diversified, Inc.
160 Congress Park Drive, Suite 114
Delray Beach, Florida 33445
561.243.4920
www.seadiversified.com





Appendix A: City Forms
City of Riviera Beach
Marine/Coastal Engineering Consulting Services
for the Riviera Beach Marina
RFQ No. 1023-21-2

Appendix A: City Forms

Bidder's Certification
Addendum Page – Addendums
Drug Free Workplace
Notification of Public Entities Crime

BIDDER'S CERTIFICATION

I have carefully examined the Invitation to Bid, Instructions to Bidders, General and/or Special Conditions, Specifications, Bid Proposal and any other documents accompanying or made a part of this invitation.

I hereby propose to furnish the goods or services specified in the Invitation to Bid at the prices or rates quoted in my bid. I agree that my bid will remain firm for a period of up to ninety (90) days in order to allow the City adequate time to evaluate the bids. Furthermore, I agree to abide by all conditions of the bid.

I certify that all information contained in this bid is truthful to the best of my knowledge and belief. I further certify that I am duly authorized to submit this bid on behalf of the vendor / contractor as its act and deed and that the vendor / contractor is ready, willing and able to perform if awarded the bid.

I further certify that this bid is made without prior understanding, agreement, connection, discussion, or collusion with any person, firm or corporation submitting a bid for the same product or service; no officer, employee or agent of the CITY OF RIVIERA BEACH or of any other bidder interested in said bid; and that the undersigned executed this Bidder's Certification with full knowledge and understanding of the matters therein contained and was duly authorized to do so.

SEA Diversified, Inc.

NAME OF BUSINESS

WTS@SeaDiversified.com

E-MAIL ADDRESS

BY:

SIGNATURE OF AUTHORIZED OFFICER

Sworn to and subscribed before me this 24
day of 3 2021.

William T. Sadler, Jr. President

PRINTED NAME AND TITLE

SIGNATURE OF NOTARY

MAILING ADDRESS

160 Congress Park Dr. Suite 114

MY COMMISSION EXPIRES: 11/16/2023

CITY, STATE, ZIP CODE

Delray Beach, FL 33445

PERSONALLY KNOWN X

OR PRODUCED

TELEPHONE NUMBER

561.243.4920

IDENTIFICATION _____

FAX NUMBER

TYPE: _____



NOTICE

ADDENDUM NO. ONE (1)

FEBRUARY 25, 2021

**CITY OF RIVIERA BEACH
RFQ NO. 1023-21-2
MARINE COASTAL ENGINEERING AND CONSULTING SERVICES**

TO ALL PROPOSERS ON THE ABOVE PROJECT: PLEASE NOTE CONTENTS HEREIN AND AFFIX (PASTE OR STAPLE) TO PROPOSAL DOCUMENTS YOU HAVE ON HAND.

The following statements supersede and supplant corresponding items in the above subject proposal as follows:

GENERAL INFORMATION:

SPECIFICATION:

PLANSHEETS:

- I. NOTICE: PLEASE SEE REQUIRED FORMS BELOW TO BE COMPLETED AND SUBMITTED WITH YOUR PROPOSAL.**

It will be required that Addendum No. 1 be signed in acknowledgment of receipt and that it be attached to the proposal when same is submitted at **3:00 p.m., Wednesday, March 24, 2021** at the office of the City Clerk, 600 W. Blue Heron Boulevard, Suite 140, Riviera Beach, Florida. For information on this RFQ, please contact:

Althea Pemsel, Director of Procurement
1481 West 15th Street
Riviera Beach, FL 33404
apemsel@rivierabeach.org

SEA Diversified, Inc.

NAME OF COMPANY

DATE: March 19, 2021


PROPOSER'S SIGNATURE

ADDENDUM PAGE

The undersigned acknowledges receipt of the following addenda to the Request to Qualify (indicate number and date of each):

Addendum No. 1 Dated February 25, 2021

Addendum No. 2 Dated March 15, 2021

Addendum No. _____ Dated _____

Addendum No. _____ Dated _____

SEA Diversified, Inc.

COMPANY

SIGNATURE

President

TITLE

DRUG FREE WORKPLACE

Preference shall be given to businesses with drug-free workplace programs. Whenever two or more bids, which are equal with respect to price, quality, and service, are received by the State or by any political subdivision for the procurement of commodities or contractual services, a bid received from a business that certifies that it has implemented a drug-free workplace program shall be given preference in the award process. Established procedures for processing tie bids will be followed if none of the tied vendors have a drug-free workplace program. In order to have a drug-free workplace program, a business shall:

1. Publish a statement notifying employees that the unlawful manufacture, distribution, dispensing, possession, or use of a controlled substance is prohibited in the workplace and specifying the actions that will be taken against employees for violations of such prohibition.
2. Inform employees about the dangers of drug abuse in the workplace, the business's policy of maintaining a drug-free workplace, any available drug counseling, rehabilitation, and employee assistance programs, and the penalties that may be imposed upon employees for drug abuse violations.
3. Give each employee engaged in providing the commodities or contractual services that are under bid a copy of the statement specified in subsection (1).
4. In the statement specified in subsection (1), notify the employees that, as a condition of working on the commodities or contractual services that are under bid, the employee will abide by the terms of the statement and will notify the employer of any conviction of, or plea of guilty or nolo contendere to, any violation of chapter 893 or of any controlled substance law of the United States or any state for a violation occurring in the workplace no later than five (5) days after such conviction.
5. Impose a sanction on, or require the satisfactory participation in a drug abuse assistance or rehabilitation program if such is available in the employee's community, by any employee who is so convicted.
6. Make a good faith effort to continue to maintain a drug-free workplace through implementation of this section.

As the person authorized to sign the statement, I certify that this form complies fully with the above requirements.

THIS CERTIFICATION is submitted by William T. Sadler, Jr. the
(INDIVIDUAL'S NAME)
President of SEA Diversified, Inc.
(TITLE/POSITION WITH COMPANY/VENDOR) (NAME OF COMPANY/VENDOR)

who does hereby certify that said Company/Vendor has implemented a drug free workplace program which meets the requirements of Section 287.087, Florida Statutes, which are identified in numbers (1) through (6) above.



SIGNATURE

March 19, 2021

DATE

CITY OF RIVIERA BEACH

NOTIFICATION OF PUBLIC ENTITY CRIMES LAW

Pursuant to Section 287.133, Florida Statutes (1995), you are hereby notified that a person or affiliate who has been placed on the convicted vendor list following a conviction for a public entity crime may not submit a bid on a contract to provide any goods or services to a public entity, may not submit a bid on a contract with a public entity for the construction or repair of a public building or public work, may not submit bids on leases or real property to a public entity, may not be awarded or perform work as a contractor, supplier, subcontractor, or consultant under a contract with any public entity, and may not transact business with any public entity in excess of the threshold amount provided in s. 287.017 [F.S.] for CATEGORY TWO [\$35,000.00] for a period of 36 months from the date of being placed on the convicted vendor list.

Acknowledged by:

SEA Diversified, Inc.

Firm Name



Signature

William T. Sadler, Jr.

Name & Title (Print or Type)



"The Best Waterfront City in Which to Live, Work and Play."

**CITY OF RIVIERA BEACH
ADDENDUM NO. 1**

TO: ALL PROPOSERS

FROM: CITY OF RIVIERA BEACH PROCUREMENT DEPARTMENT

SUBJECT: ADDENDUM NO. TWO (2) TO RFQ 1023-21-2, MARINE COASTAL
ENGINEERING AND CONSULTING SERVICES

DATE: MARCH 15, 2021

CC: GENERAL PUBLIC

A. NOTICE: The purpose of this Addendum is to address Requests for Information (RFIs) and provide a written response. All other terms and conditions of the solicitation remain unchanged.

QUESTIONS AND ANSWERS:

1. 20-page limit – double or single sided? How are pages counted?

Answer: The pages can be double sided; the intent is to limit the length of the response in order to obtain succinct responses.

2. Does the 20-page limit include the tabs?

Answer: No, the tabs are not counted as pages.

3. Does the 20-page limit include the title page/TOC?

Answer: No. The table of contents are excluded from the page count.

4. Is the City currently working with a consultant on this type of work on the Marina? If so, with whom?

Answer: The current Engineering Consultant is Sea Diversified, Inc.

5. Regarding your recent RFP, Marine Coastal Engineering RFQ-RFQ 1023-21-2-0-2021/AP, I have been trying to locate the identity of the incumbent for your coastal engineering work, but have been unable to find the information on your website or through opportunity online vendors. Would it be possible to disclose the name of the company awarded earlier contracts?

Answer: *The current Engineering Consultant is Sea Diversified, Inc.*

6. Do you wish us to submit resumes? If so, are they in the 20-page count?

Answer: *Yes. They are a part of the 20 double-sided page count.*

7. For your local participation goal, what does 'local' mean? Does the City have specific goals for types of firms or professionals working on the project?

Answer: Local means firms within the City limits and Palm Beach County, our goal is 15%.

8. What is the primary driver for this RFQ? What does the City hope to achieve through this coastal engineering work?

Answer: *The City seeks to obtain engineering consulting services for on-going projects at the Marina.*

Addendum No. 2 must be signed as acknowledgment of receipt, and attached to the proposal when submitted at **3:00 p.m., Wednesday, March 24, 2021** at the Office of the City Clerk, 600 W. Blue Heron Boulevard, Suite 140, Riviera Beach, Florida, 33404. For information on this solicitation, please contact:

Althea Pemsel, Director of Procurement
1481 West 15th Street
Riviera Beach, FL 33404
apemsel@rivierabeach.org

SEA Diversified, Inc.

NAME OF COMPANY

March 19, 2021

DATE



PROPOSER'S SIGNATURE

William T. Sadler, Jr.

PROPOSER'S PRINTED NAME



Appendix B: Licenses and Certifications
City of Riviera Beach
Marine/Coastal Engineering Consulting Services
for the Riviera Beach Marina
RFQ No. 1023-21-2

Appendix B: Sea Diversified Licenses & Certifications

Professional Engineering License – William T. Sadler Jr., P.E., P.S.M.

Professional Surveying and Mapper License – Sea Diversified, Inc.

Professional Surveying and Mapper License – William T. Sadler Jr., P.E., P.S.M.

Palm Beach County Small Business Enterprise (SBE) Certification – Sea Diversified, Inc.

South Florida Water Management District Small Business Certification – Sea Diversified, Inc.

2021 Corporate Registration – Sea Diversified, Inc.



Ron DeSantis, Governor



FBPE
FLORIDA BOARD OF
PROFESSIONAL ENGINEERS

STATE OF FLORIDA

BOARD OF PROFESSIONAL ENGINEERS

THE PROFESSIONAL ENGINEER HEREIN IS LICENSED UNDER THE
PROVISIONS OF CHAPTER 471, FLORIDA STATUTES

SADLER, WILLIAM THOMAS JR

160 CONGRESS PARK DRIVE
SUITE 114
DELRAY BEACH FL 33445

LICENSE NUMBER: PE41184

EXPIRATION DATE: FEBRUARY 28, 2023

Always verify licenses online at MyFloridaLicense.com



Do not alter this document in any form.

This is your license. It is unlawful for anyone other than the licensee to use this document.



Florida Department of Agriculture and Consumer Services
Division of Consumer Services
Board of Professional Surveyors and Mappers
2005 Apalachee Pkway Tallahassee, Florida 32399-6500
800HELPFLA(435-7352) or (850) 488-2221

March 2, 2021

SEA DIVERSIFIED INC
160 CONGRESS PARK DR STE 114
DELRAY BEACH, FL 33445-4724

SUBJECT: Professional Surveyor and Mapper Business Certificate # LB7342

Your application / renewal as a professional surveyor and mapper business as required by Chapter 472, Florida Statutes, has been received and processed.

The license appears below and is valid through February 28, 2023.

You are required to keep your information with the Board current. Please visit our website at www.800helpfla.com/psm to create your online account. If you have already created your online account, you can use the website to maintain your license. You can also find other valuable information on the website.

If you have any questions, please do not hesitate to call the Division of Consumer Services, Board of Professional Surveyors and Mappers at 800-435-7352 or 850-488-2221.

Detach Here



Florida Department of Agriculture and Consumer Services
Division of Consumer Services
Board of Professional Surveyors and Mappers
2005 Apalachee Pkway Tallahassee, Florida 32399-6500

License No.: **LB7342**

Expiration Date February 28, 2023

Professional Surveyor and Mapper Business License

Under the provisions of Chapter 472, Florida Statutes

SEA DIVERSIFIED INC
160 CONGRESS PARK DR STE 114
DELRAY BEACH, FL 33445-4724

Nicole Fried

NICOLE "NIKKI" FRIED
COMMISSIONER OF AGRICULTURE



Florida Department of Agriculture and Consumer Services
Division of Consumer Services
Board of Professional Surveyors and Mappers
2005 Apalachee Pkwy Tallahassee, Florida 32399-6500
800HELPLFLA(435-7352) or (850) 488-2221

March 3, 2021

WILLIAM THOMAS SADLER JR
160 CONGRESS PARK DR STE 114
DELRAY BEACH, FL 33445-4724

Detach Here

SUBJECT: Professional Surveyor and Mapper License # LS5859

Your application / renewal as a professional surveyor and mapper as required by Chapter 472, Florida Statutes, has been received and processed.

The license appears below and is valid through February 28, 2023.

You are required to keep your information with the Board current. Please visit our website at www.800helpfla.com/psm to create your online account. If you have already created your online account, you can use the website to maintain your license. You can also find other valuable information on the website.

If you have any questions, please do not hesitate to call the Division of Consumer Services, Board of Professional Surveyors and Mappers at 800-435-7352 or 850-488-2221.



**Florida Department of Agriculture
and Consumer Services
Board of Professional Surveyors
and Mappers**

LS5859

**Professional Surveyor and Mapper
WILLIAM THOMAS SADLER JR**

IS LICENSED under the provisions of Ch. 472 FS
Expiration date: February 28, 2023

Detach Here



Florida Department of Agriculture and Consumer Services
Division of Consumer Services
Board of Professional Surveyors and Mappers
2005 Apalachee Pkwy Tallahassee, Florida 32399-6500

License No.: **LS5859**

Expiration Date February 28, 2023

Professional Surveyor and Mapper License

Under the provisions of Chapter 472, Florida Statutes

WILLIAM THOMAS SADLER JR
160 CONGRESS PARK DR STE 114
DELRAY BEACH, FL 33445-4724

Nicole Fried

NICOLE "NIKKI" FRIED
COMMISSIONER OF AGRICULTURE



September 12, 2019

Sea Diversified, Inc.
151 NW 1st Avenue
Delray Beach, FL 33444

Dear William Sadler:

The Palm Beach County Office of Equal Business Opportunity (OEBO) has completed its review of your application and documents and is pleased to announce that your firm has been re-certified for:

- 90510 - Aerial Surveys and Mapping Services
- 91842 - Engineering Consulting
- 92033 - Mapping Services, Digitized, Cartography
- 92500 - Engineering Services, Professional
- 92535 - Environmental Engineering
- 92573 - Ocean Engineering Services
- 92586 - Surveyor Services, Land
- 96141 - Global Positioning Systems Surveying Services
- 96252 - Mapping & Geographical Information Systems (GIS) Services
- 95953 - Marine Survey Services (Including Sonar, Radar, Location/Recovery of Sunken Objects, etc.)

as a Small Business Enterprise (SBE) for three (3) years, expiring **September 11, 2022**. You will not receive Small Business Enterprise (SBE) consideration if you bid in another area. Enclosed is your certificate.

Your firm shall be subject to the provisions of the Palm Beach County Purchasing Ordinance and all State and Federal laws relating to the transaction of business.

This certification entitles you to participate in contracting opportunities when the products and services offered by your firm are being considered for bid. As an additional service to your firm, you will be included in the Palm Beach County Directory of certified S/M/WBE firms. If you wish to have your firm's listing changed, please contact our office at (561) 616-6840 for an application to modify your certification.

Your company's certification is subject to periodic review to verify your continued eligibility. Any changes you report to any County Department/Division must also be reported to OEBO. Your company name and vendor code must be the same in both Purchasing and OEBO.

Failure to maintain your firm in accordance with S/M/WBE requirements contained in the Palm Beach County Code or failure to report changes in the status of your firm may result in your firm being decertified. Remember, whenever you respond to a County bid you must do so under the name of **Sea Diversified, Inc.** with vendor code **VC0000010134**.

Sincerely,

Angela Smith
Small Business Development Specialist II

Office of
Equal Business Opportunity
50 South Military Trail, Suite 202
West Palm Beach, FL 33415
(561) 616-6840
www.pbcgov.com/oebo



**Palm Beach County
Board of County
Commissioners**

- Mack Bernard, Mayor
- Dave Kerner, Vice Mayor
- Hal R. Valeche
- Gregg K. Weiss
- Robert S. Weinroth
- Mary Lou Berger
- Melissa McKinlay

County Administrator

Verdenia C. Baker

"An Equal Opportunity
Affirmative Action Employer"

Palm Beach County
Office of Equal Business Assistance

Certifies That

SEA DIVERSIFIED, INC.

Vendor # VC0000010134

*is a Small Business Enterprise as prescribed by section 2-80.20 - 2-80.40 of the
Palm Beach County Code for a three year period from
September 12, 2019 - September 11, 2022*

The following Services and/or Products are covered under this certification:

**Aerial Surveys and Mapping Services
Engineering Consulting
Mapping Services, Digitized, Cartography
Engineering Services, Professional
Environmental Engineering
Ocean Engineering Services
Surveyor Services, Land**

**Global Positioning Systems Surveying Services
Mapping & Geographical Information Systems
Marine Survey Services (Including Sonar, Radar,
Location/Recovery of Sunken Objects, etc.)**



Allen F. Gray, Manager

9/11/2019



Palm Beach County Board of County Commissioners

Mack Bernard, Mayor
Dave Kerner, Vice Mayor
Hal Valeche
Greg K. Weiss
Robert S. Weinroth
Mary Lou Berger
Melissa McKinlay,

County Administrator
Verdenia C. Baker



SOUTH FLORIDA WATER MANAGEMENT DISTRICT

February 14, 2019

REGISTERED VENDOR NO.: 108725

Mr. William T Sadler, Jr, PE, PSM, President
Sea Diversified, Inc.
151 NW 1st Avenue
Delray Beach, FL 33444

CERTIFICATION EXPIRATION DATE
February 14, 2022

Dear Mr. Sadler:

Congratulations, the South Florida Water Management District (District) has recertified your firm as a Small Business Enterprise (SBE). This certification is valid for three (3) years and may only be applied when business is conducted in the following area(s):

Professional Engineering & Surveying & Mapping Services

Your submittal of bids or proposals to supply other products or services outside of the specialty area(s) noted above will not count toward SBE participation. If you require certification in other specialty areas, please contact the Procurement Bureau, SBE Section, for additional information.

Renewal is required every three (3) years and should be requested a minimum of 45 days prior to the above expiration date.

If any changes occur within your company during the certification period such as ownership, affiliate company status, address, telephone number, licensing status, gross revenue, or any information that relates to your SBE Certification status, you must notify this office in writing immediately. It is imperative that we maintain current information on your company at all times. **FAILURE TO REPORT CHANGES MAY RESULT IN DECERTIFICATION.**

Certification is not a guarantee that your firm will receive work, nor an assurance that your firm will remain in the District's vendor database.

We look forward to a mutually beneficial working relationship.

Sincerely,

A handwritten signature in black ink, appearing to read "Jon Lynn Fox".

Jon Lynn Fox
Sr. Contract Compliance Specialist
Procurement Bureau

JLF/se



Florida Department of Transportation

RON DESANTIS
GOVERNOR

605 Suwannee Street
Tallahassee, FL 32399-0450

KEVIN J. THIBAUT, P.E.
SECRETARY

November 16, 2020

William Sadler Jr., President
SEA DIVERSIFIED, INC.
160 Congress Park Drive, Suite 114
Delray Beach, Florida 33445

Dear Mr. Sadler:

The Florida Department of Transportation has reviewed your application for prequalification package and determined that the data submitted is adequate to technically prequalify your firm for the following types of work:

- Group 8 - Survey and Mapping
- 8.2 - Design, Right of Way & Construction Surveying

Your firm is now technically prequalified with the Department for Professional Services in the above referenced work types. Your firm may pursue projects in the referenced work types with fees estimated at less than \$500,000.00. This status shall be valid until November 16, 2021 for contracting purposes.

Should you have any questions, please feel free to contact me by email at carliayn.kell@dot.state.fl.us or by phone at 850-414-4597.

Sincerely,

A handwritten signature in blue ink that reads "Carliayn Kell". The signature is written in a cursive, flowing style.

Carliayn Kell
Professional Services
Qualification Administrator

CBHK/kw

2021 FLORIDA PROFIT CORPORATION ANNUAL REPORT

DOCUMENT# P04000049910

Entity Name: SEA DIVERSIFIED, INC.

Current Principal Place of Business:

160 CONGRESS PARK DRIVE
SUITE 114
DELRAY BEACH, FL 33445

Current Mailing Address:

160 CONGRESS PARK DRIVE
SUITE 114
DELRAY BEACH, FL 33445 US

FEI Number: 51-0501765

Certificate of Status Desired: No

Name and Address of Current Registered Agent:

RUMIN, EDWARD R
2755 E. OAKLAND PARK BLVD.
SUITE 304
FORT LAUDERDALE, FL 33306 US

The above named entity submits this statement for the purpose of changing its registered office or registered agent, or both, in the State of Florida.

SIGNATURE:

Electronic Signature of Registered Agent

Date

Officer/Director Detail :

Title PRESIDENT
Name SADLER, WILLIAM TJR
Address 160 CONGRESS PARK DRIVE
 SUITE 114
City-State-Zip: DELRAY BEACH FL 33445

Title EXECUTIVE SECRETARY
Name SADLER, DEBINIQUE T
Address 160 CONGRESS PARK DRIVE
 SUITE 114
City-State-Zip: DELRAY BEACH FL 33445

I hereby certify that the information indicated on this report or supplemental report is true and accurate and that my electronic signature shall have the same legal effect as if made under oath; that I am an officer or director of the corporation or the receiver or trustee empowered to execute this report as required by Chapter 607, Florida Statutes; and that my name appears above, or on an attachment with all other like empowered.

SIGNATURE: WILLIAM T. SADLER JR.

PRESIDENT

02/03/2021

Electronic Signature of Signing Officer/Director Detail

Date



Appendix C: Representative Projects
City of Riviera Beach
Marine/Coastal Engineering Consulting Services
for the Riviera Beach Marina
RFQ No. 1023-21-2

PROFESSIONAL EXPERIENCE

Name & address of client:

City of Riviera Beach
 200 E. 13th Street
 Riviera Beach, FL 33404

Nature of the firm’s contract:

Marine Engineering
 Environmental Permitting
 Construction Administration
 Hydrographic/Topographic Surveys

Owner’s representative’s name, addresses, & phone number:

City of Riviera Beach
 600 West Blue Heron Blvd.,
 Riviera Beach, FL 33404
 POC: John Sprague
 (561) 723-5418

Date contract started & ended:

10/2010 – Current



Riviera Beach Municipal Marina Redevelopment
City of Riviera Beach, Florida

Scope or nature of contract:

William T. Sadler, Jr., P.E., P.S.M. is the marine engineering consultant for the City of Riviera Beach Municipal Marina improvement project since 2010 and has successfully completed two phases of the marina reconstruction program encompassing the following improvements:

- Demolition of deteriorated fixed concrete docks and replacement with a combination of state-of-the-art concrete floating docks, aluminum floating docks and aluminum fixed docks. Fixed aluminum docks were installed along the new bulkhead, which is referred to as the Promenade Dock that supports the facilities charter and dive operations. The fixed pier was designed and constructed with unique articulating floating finger piers. SDI worked with state and federal agencies to expand the footprint of the facility to accommodate a larger fleet mix. The new marina is protected by a heavy-duty perimeter concrete floating wave attenuation system designed based on a comprehensive wind, wave, current study
- Replacement of deteriorating concrete bulkhead structures with a steel sheetpile bulkhead with concrete cap and helical anchor tie-back system. SDI specified helical anchors to minimize disruption to ongoing marina activities, upland restaurant operations and to avoid conflicts with existing utility infrastructure
- Replacement of all marina utilities (electric, potable water, sewer and fire) including upland utility infrastructure. Marina power was designed to support vessels in the mega-yacht and super-yacht classes
- Replacement of marina fuel system including addition of high capacity/high flow systems to support mega-yacht fueling
- Replacement of the over-water fuel attendant’s office
- Maintenance dredging including coordination of submerged utility relocation

Present status of the contract:

Phases One and Two Complete, Phase Three Under Construction, Phase Four in Permitting

Sea Diversified, Inc.
160 Congress Park Drive, Suite 114
Delray Beach, Florida 33445
561.243.4920
www.seadiversified.com





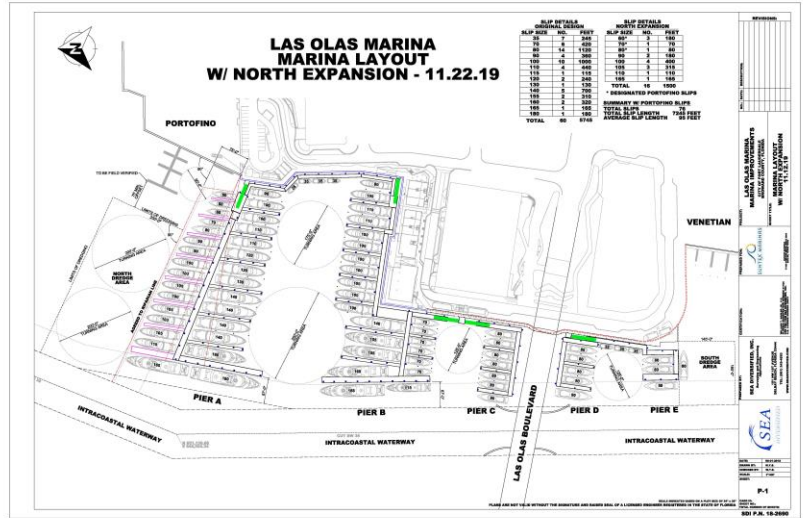
Appendix C: Representative Projects
City of Riviera Beach
Marine/Coastal Engineering Consulting Services
for the Riviera Beach Marina
RFQ No. 1023-21-2

Name & address of client:
 Suntex Marinas
 1688 Meridian Avenue, Suite 900
 Miami Beach, FL 33139

Nature of the firm’s contract:
 Marine Design Engineering
 Environmental Permitting

Owner’s representative’s name, addresses, & phone number:
 Suntex Marinas
 1688 Meridian Avenue, Suite 900
 Miami Beach, FL 33139
 POC: David Filler
 (305) 788-8335
 dfiller@suntex.com

Date contract started & ended:
 01/2017 – Current



Las Olas Marina
City of Fort Lauderdale, Broward County, Florida



Scope or nature of contract:

William T. Sadler, Jr., P.E., P.S.M. is responsible for design, engineering and permitting assistance in support of the reconstruction of the Las Olas Marina in Fort Lauderdale. Project encompasses a 60+-slip marina improvement project with slips ranging from 30-feet to 200-feet with the majority of slips designed to accommodate mega-yachts. Project includes excavation of uplands, dredging, bulkhead replacement, floating dock improvements and replacement of all utilities

Estimated construction cost \$25,000,000

Present status of the contract:

Permitting Ongoing – Construction Pending





Appendix C: Representative Projects
City of Riviera Beach
Marine/Coastal Engineering Consulting Services
for the Riviera Beach Marina
RFQ No. 1023-21-2

Name & address of client:

MarineMax
MarineMax Stuart
350 SW Monterey Road
Stuart, FL

Nature of the firm's contract:

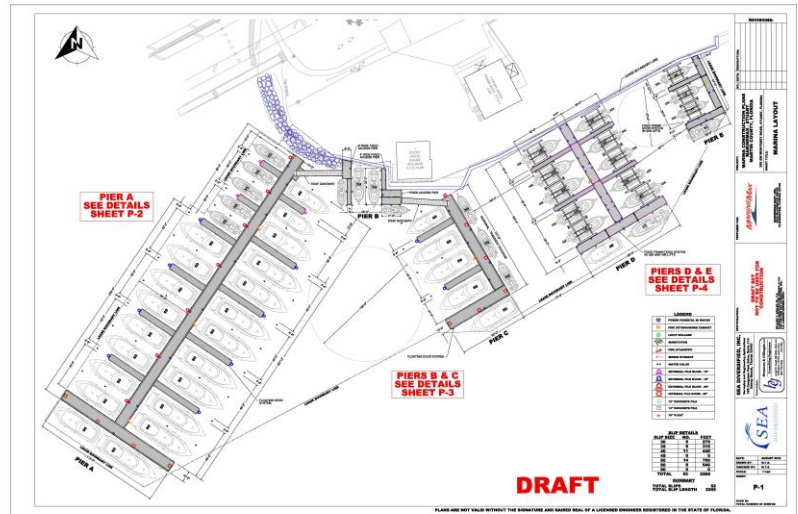
Marine Design Engineering
Environmental Permitting
Construction Administration

Owner's representative's name, addresses, & phone number:

MarineMax, Inc.
2600 McCormick Drive, Suite 200
Clearwater, FL 33759
POC: Sam Lowrey
(727) 228-7672

Date contract started & ended:

01/2019 – Current



MarineMax - Stuart
Martin County, Florida



Scope or nature of contract:

William T. Sadler, Jr., P.E., P.S.M. is responsible for design, engineering, permitting and construction administration in support of fixed and floating dock improvements of the MarineMax facility in Stuart. Project encompasses a 60-slip marina improvement project, with slips ranging from 30-feet to 80-feet. Project includes dredging, bulkhead replacement, fixed and floating dock improvements, vertical boat lifts and replacement of all utilities

Estimated construction cost \$3,000,000

Present status of the contract:

Permitting Complete – Construction Pending



Appendix C: Representative Projects
City of Riviera Beach
Marine/Coastal Engineering Consulting Services
for the Riviera Beach Marina
RFQ No. 1023-21-2

Name & address of client:

Kelly Brothers / Golden Marine
 15775 Pine Ridge Road
 Fort Myers, FL 33908

Nature of the firm’s contract:

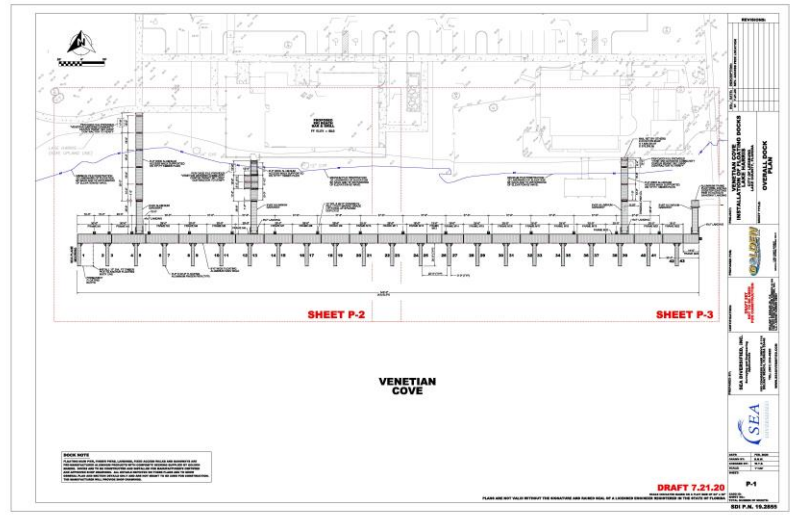
Marine Design Engineering
 Construction Administration

Owner’s representative’s name, addresses, & phone number:

Kelly Brothers
 15775 Pine Ridge Road
 Fort Myers, FL 33908
 POC: Dane Kelly
 P: (239) 482-7300 1
 C: (239) 872-7573

Date contract started & ended:

01/2020 – Current



Venetian Cove
City of Leesburg, Florida



Scope or nature of contract:

William T. Sadler, Jr., P.E., P.S.M. was responsible for design, engineering in support of fixed and floating dock improvements at the Venetian Cove, a City Boat Club facility in the City of Leesburg. Project encompasses a 32-slip marina improvement project with 30-foot slips along with a seaplane dock. Project includes fixed access piers, floating docks and lighting.

Estimated construction cost \$1,000,000

Present status of the contract: Construction Pending





Appendix C: Representative Projects
City of Riviera Beach
Marine/Coastal Engineering Consulting Services
for the Riviera Beach Marina
RFQ No. 1023-21-2

Name & address of client:
 Village of North Palm Beach
 Anchorage Park Marina
 603 Anchorage Drive
 North Palm Beach, FL 33408

Nature of the firm's contract:
 Marine Design Engineering
 Environmental Permitting
 Construction Administration

Owner's representative's name, addresses, & phone number:
 Village of North Palm Beach
 501 U.S. Highway One
 North Palm Beach, FL 33408
 POC: Mr. Charles Huff
 Special Projects Director
 (561) 904-2139

Date contract started & ended:
 01/2018 – 2019

Anchorage Park Marina Improvements
Village of North Palm Beach, Florida

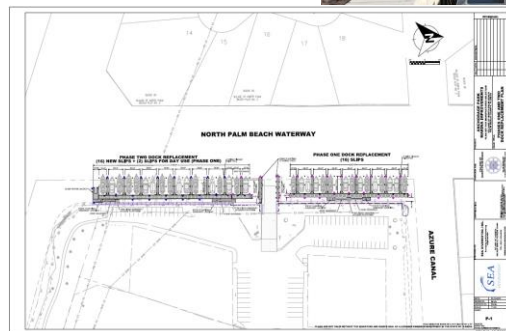


Scope or nature of contract:

William T. Sadler, Jr., P.E., P.S.M. was responsible for design, engineering, permitting and construction administration in support of fixed and floating dock improvements of the Anchorage Park Marina. Project encompasses a 32-slip marina improvement project, with slips ranging from 30-feet to 40-feet.

Estimated construction cost \$500,000

Present status of the contract:
 Phase One Construction Complete in 2019





Appendix C: Representative Projects
City of Riviera Beach
Marine/Coastal Engineering Consulting Services
for the Riviera Beach Marina
RFQ No. 1023-21-2

Name & address of client:

Bluetide Marina, LLC
 103 E International Speedway Blvd
 Daytona Beach, FL 32118

Nature of the firm’s contract:

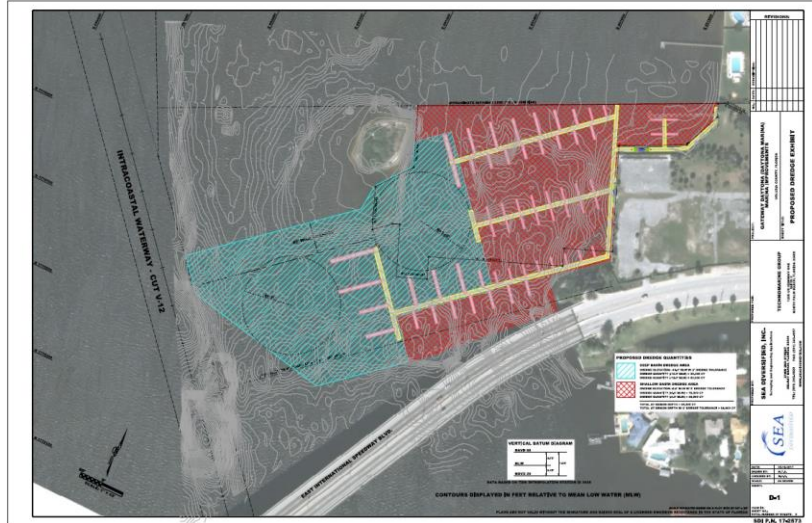
Marine Design Engineering
 Environmental Permitting
 Bathymetric/Topographic Surveys
 Seagrass Surveys
 Geotechnical Investigations

Owner’s representative’s name, addresses, & phone number:

The Jaymor Group
 105 West Beaver Creek Road
 Units 9 & 10
 Richmond Hill, ON L4B 1C6
 POC: Mr. Fab Lucchese
 (905) 882-1212 Ext 117

Date contract started & ended:

04/2017 – Current



Gateway Daytona Marina (Bluetide Marina)
Daytona Beach, Florida

Scope or nature of contract:

William T. Sadler, Jr., P.E., P.S.M. was responsible for design, engineering, permitting, hydrographic and topographic surveys, seagrass surveys, and geotechnical services in support of marina improvements at the Gateway Daytona Marina. Project encompasses a 138-slip marina improvement project, with slips ranging from 30-feet to 120-feet, and dredging plans for approximately 15,000 cubic yards of material.

Estimated construction cost \$7 million.

Present status of the contract:

Presently Under Construction





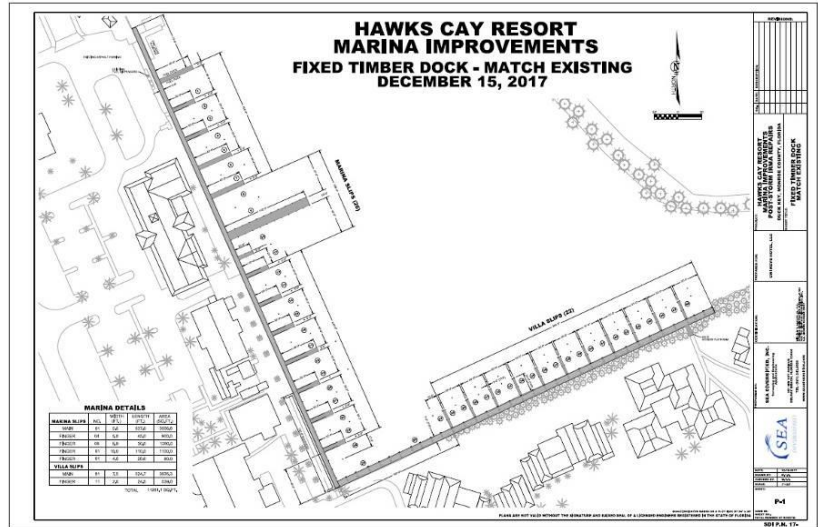
Appendix C: Representative Projects
City of Riviera Beach
Marine/Coastal Engineering Consulting Services
for the Riviera Beach Marina
RFQ No. 1023-21-2

Name & address of client:
 Hawks Cay Resort
 61 Hawks Cay Blvd
 Duck Key, FL 33050

Nature of the firm’s contract:
 Marine Design Engineering
 Environmental Permitting
 Construction Administration
 Bathymetric/Topographic Surveys
 Seagrass Surveys
 Geotechnical Investigations

Owner’s representative’s name, addresses, & phone number:
 Jones Lang LaSalle (JLL)
 3344 Peachtree Road NE
 Suite 1100
 Atlanta, GA 30326
 POC: Mr. Steve Schrope
 (404) 995-2170

Date contract started & ended:
 09/2017 – Current



**Hawks Cay Marina Post-Storm Hurricane Irma
 Duck Key, Monroe County, Florida**



Scope or nature of contract:

William T. Sadler, Jr., P.E., P.S.M. was responsible for design, engineering, permitting, construction administration, hydrographic and topographic surveys, seagrass surveys, and geotechnical services in support of the post-storm Hurricane Irma repairs of the Hawks Cay Resort Marina. Project encompasses a 48-slip marina improvement project, with slips ranging from 30-feet to 80-feet. Estimated construction cost \$3 million.

Present status of the contract:
 Construction Complete - 2021



Sea Diversified, Inc.
 160 Congress Park Drive, Suite 114
 Delray Beach, Florida 33445
 561.243.4920
 www.seadiversified.com





Appendix C: Representative Projects
City of Riviera Beach
Marine/Coastal Engineering Consulting Services
for the Riviera Beach Marina
RFQ No. 1023-21-2

Name & address of client:

Aqua Marine Partners
Aquamarina Hi-Lift
2890 NE 187th Street
Aventura, FL 33180

Nature of the firm's contract:

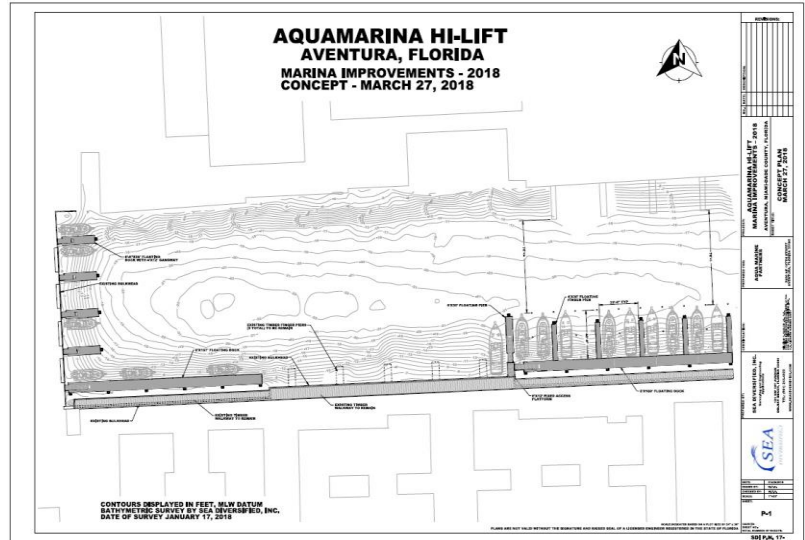
Marine Design Engineering
Environmental Permitting
Bathymetric/Topographic Surveys
Seagrass Surveys

Owner's representative's name, addresses, & phone number:

Aquamarina Hi-Lift Marina
2890 NE 187th Street
Aventura, FL 33180
POC: Steven Kinderman
(305) 931-2550

Date contract started & ended:

02/2018 – 2019



Aquamarina Hi-Lift Improvements
Aventura, Florida

Scope or nature of contract:

William T. Sadler, Jr., P.E., P.S.M. was responsible for design, engineering, permitting hydrographic and topographic surveys, and seagrass surveys in support of improvements at the Aquamarina Hi-Lift. Project encompasses a 14-slip marina improvement project, with slips ranging from 30-feet to 50-feet.

Estimated construction cost \$500,000

Present status of the contract:

Construction Pending



Appendix C: Representative Projects
City of Riviera Beach
Marine/Coastal Engineering Consulting Services
for the Riviera Beach Marina
RFQ No. 1023-21-2

Name & address of client:
 City of Holly Hill
 1065 Ridgewood Avenue
 Holly Hill, FL 32117

Nature of the firm's contract:
 Marine Design Engineering
 Environmental Permitting
 Construction Administration

Owner's representative's name, addresses, & phone number:
 City of Holly Hill
 1065 Ridgewood Avenue
 Holly Hill, FL 32117
 POC: Mr. Jim McCroskey
 (386) 248-9425

Date contract started & ended:
 02/2012 - 2014



Holly Hill City Pier Expansion
City of Holly Hill, Florida



Scope or nature of contract:

William T. Sadler, Jr., P.E., P.S.M. was responsible for engineering, permitting and construction administration services relating to the expansion of the City Pier at Riverside Park modifying the previous pier design to extend further into the Halifax River. The City's objective was to double the pier footprint, resulting in a pier twice as long with two (2) platform areas, one (1) mid-way along the pier and the other at the easterly pier terminus. A second phase of the project will be to modify the pier to accommodate vessel dockage, which will entail the addition of finger piers and possible utilities.

Present status of the contract:
 Construction Complete.





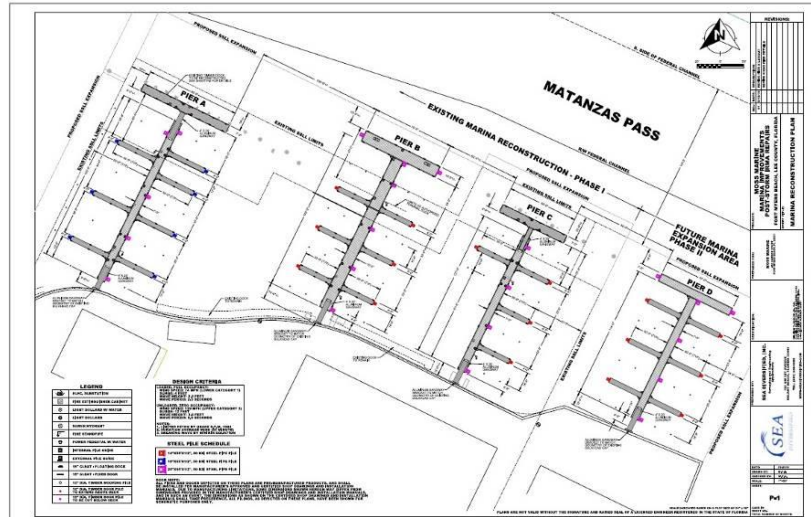
Appendix C: Representative Projects
City of Riviera Beach
Marine/Coastal Engineering Consulting Services
for the Riviera Beach Marina
RFQ No. 1023-21-2

Name & address of client:
 Moss Marine
 450 Harbor Court
 Fort Myers Beach, FL 33931

Nature of the firm’s contract:
 Marine Design Engineering
 Environmental Permitting
 Construction Administration
 Bathymetric/Topographic Surveys
 Seagrass Surveys
 Geotechnical Investigations

Owner’s representative’s name, addresses, & phone number:
 Moss Marine
 450 Harbor Court
 Fort Myers Beach, FL 33931
 POC: Mr. George Freeland
 (239) 765-6677

Date contract started & ended:
 12/2017 – Current



Moss Marina Post-Storm Hurricane Irma Repairs
Improvements & Expansion
Fort Myers Beach, Florida

Scope or nature of contract:

William T. Sadler, Jr., P.E., P.S.M. was responsible for design, engineering, permitting, construction administration, hydrographic and topographic surveys, seagrass surveys, and geotechnical services in support of the post-storm Hurricane Irma repairs, improvements, and expansion of Moss Marina located along Matanzas Pass in Fort Myers Beach. Project encompasses a 52-slip marina improvement project, with slips ranging from 30-feet to 80-feet. Estimated construction cost \$3 million.

Present status of the contract:
 Phase One Construction Complete





Appendix C: Representative Projects
City of Riviera Beach
Marine/Coastal Engineering Consulting Services
for the Riviera Beach Marina
RFQ No. 1023-21-2

Name & address of client:

Royal Palm Yacht & Country Club
2425 Maya Palm Drive
Boca Raton, Florida 33432

Nature of the firm's contract:

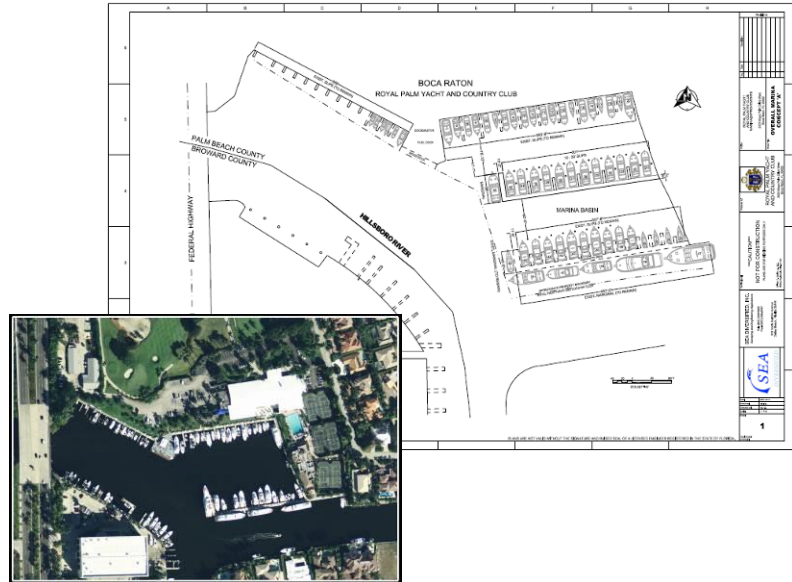
Marine Design Engineering
Dredging Design
Environmental Permitting

Owner's representative's name, addresses, & phone number:

Royal Palm Yacht & Country Club
2425 Maya Palm Drive
Boca Raton, Florida 33432
POC: Ms. Robin Blankhorst, CCM
(561) 210-8120

Date contract started & ended:

10/2013 - 2017



Royal Palm Yacht & Country Club
Marina Improvements
Boca Raton, Florida

Scope or nature of contract:

William T. Sadler, Jr., P.E., P.S.M. provided marine consulting services pertaining to proposed marina improvements at the Royal Palm Yacht and Country Club (RPYCC). RPYCC contracted SDI to initiate a program replacing their existing marina along with the adjacent clubhouse facility. The marina improvements included: replacement and / or repairs to the bulkhead; replacement of the fixed concrete marginal walkway and finger piers along the north side of the marina with a floating marginal walkway and finger piers; addition of floating finger piers along the east bulkhead; replacement of the concrete fixed docks within the center of the basin with floating docks; replacement of all utilities (electric, water, sewer, cable and phone) and fire protection system; maintenance dredging.

Present status of the contract:

Construction Complete



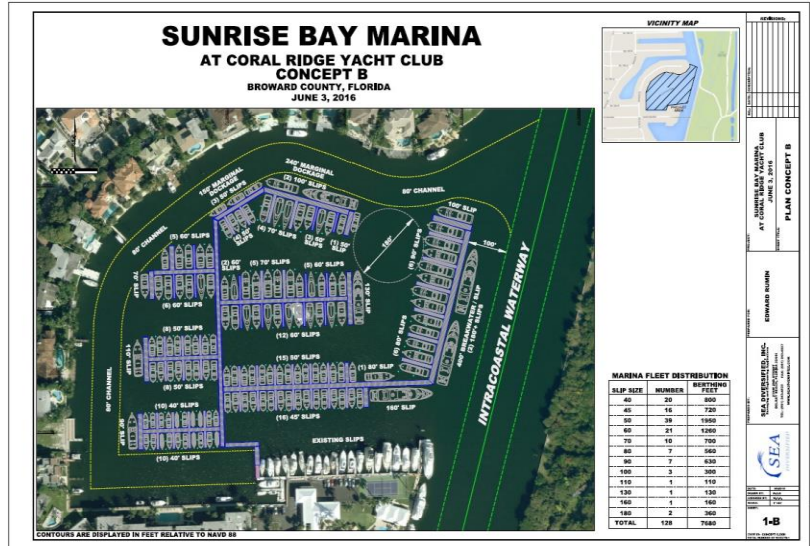
Appendix C: Representative Projects
City of Riviera Beach
Marine/Coastal Engineering Consulting Services
for the Riviera Beach Marina
RFQ No. 1023-21-2

Name & address of client:
 Rumin
 2800 Yacht Club Blvd
 Fort Lauderdale, FL 33304

Nature of the firm's contract:
 Marine Design Engineering

Owner's representative's name, addresses, & phone number:
 Rumin
 2800 Yacht Club Blvd
 Fort Lauderdale, FL 33304
 POC: Mr. Edward Rumin
 (561) 841-3380

Date contract started & ended:
 01/2018 – 2019



Sunrise Bay Marina
Fort Lauderdale, Florida

Scope or nature of contract:

William T. Sadler, Jr., P.E., P.S.M. was responsible for conceptual planning for the development and construction of the Sunrise Bay Marina located at the Coral Ridge Yacht Club. Project encompasses a 128-slip marina development project, with slips ranging from 50-feet to 180-feet.

Estimated construction cost \$10 million+

Present status of the contract:

SDI has provided conceptual planning including bathymetric and topographic surveys. Environmental permitting and construction phases to be determined.





Appendix C: Representative Projects
City of Riviera Beach
Marine/Coastal Engineering Consulting Services
for the Riviera Beach Marina
RFQ No. 1023-21-2

Name & address of client:

Technomarine Construction, Inc.
 1208 U.S. Highway 1, Suite C
 North Palm Beach, FL 33408

Nature of the firm’s contract:

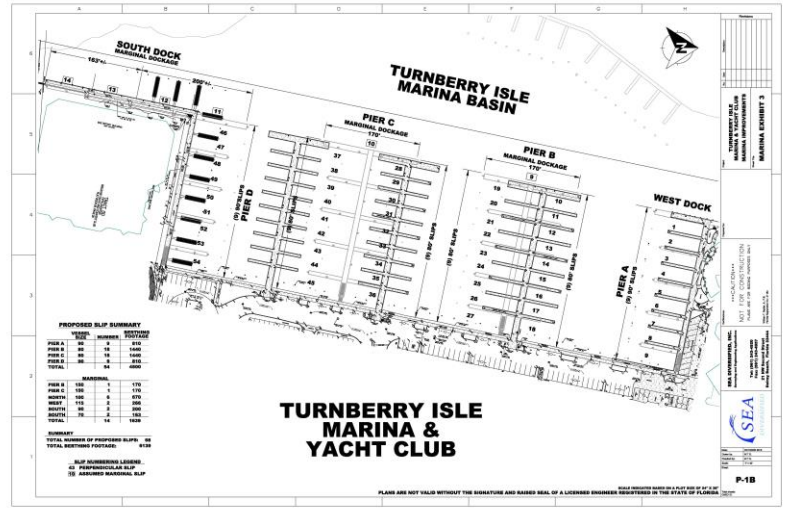
Environmental Permitting

Owner’s representative’s name, addresses, & phone number:

Turnberry Isle Marina & Yacht Club
 19735 Turnberry Way
 Aventura, FL 33180
 POC: Mr. Jat Talton
 (772) 341-7036

Date contract started & ended:

06/2015 – 2018



Turnberry Isle Marina and Yacht Club
Marina Improvements
Aventura, Florida

Scope or nature of contract:

William T. Sadler, Jr., P.E., P.S.M. was responsible for permitting and related services associated with proposed marina improvements at Turnberry Isle Marina and Yacht Club located in Aventura, Florida. Replacing existing concrete fixed-docks with Technomarine floating-docks in a modified configuration to accommodate a larger fleet mix at the facility. The proposed plan resulted in a decrease in the amount of slips, from 117-slips to 62-slips, however the linear berthing footage increased from 5,000 to 5,345 feet.

Present status of the contract:

Construction Complete





Appendix C: Representative Projects
City of Riviera Beach
Marine/Coastal Engineering Consulting Services
for the Riviera Beach Marina
RFQ No. 1023-21-2

Name & address of client:
 City of Bradenton
 1600 6th Street West
 Bradenton, FL 34208

Nature of the firm’s contract:
 Marine Design Engineering
 Environmental Permitting
 Construction Administration

Owner’s representative’s name, addresses, & phone number:
 City of Bradenton
 1600 6th Street West
 Bradenton, FL 34208
 POC: Mr. Ralph Ward
 (941) 714-7502

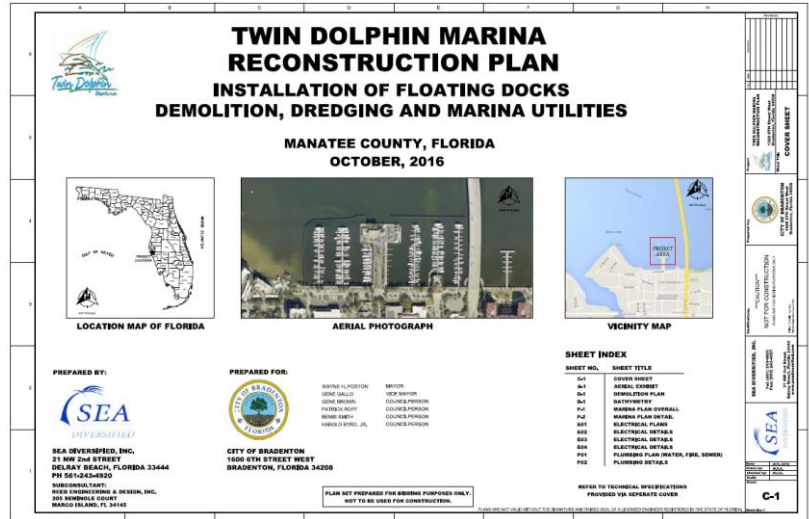
Date contract started & ended:
 05/2016 – 2020



Scope or nature of contract:

William T. Sadler, Jr., P.E., P.S.M. was responsible for design engineering, permitting, and construction administration services in support of marina improvements at the Twin Dolphin Marina, including demolition of old fixed and floating docks, and installation of floating docks, marina utilities and dredging. Project encompasses a 100-slip marina improvement project, with slips ranging from 30-feet to 120-feet. Estimated construction cost \$6 million.

Present status of the contract:
 Construction Complete



Twin Dolphin Marina
Bradenton, Florida





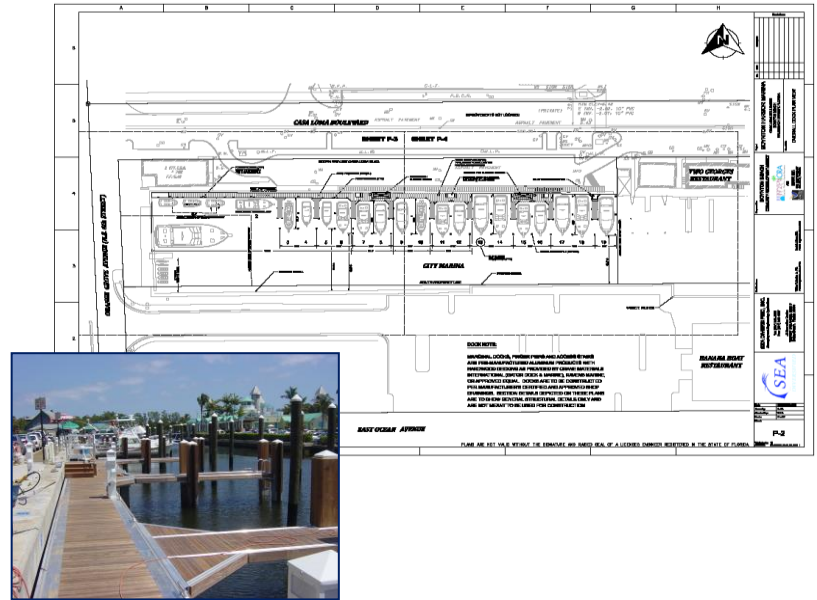
Appendix C: Representative Projects
City of Riviera Beach
Marine/Coastal Engineering Consulting Services
for the Riviera Beach Marina
RFQ No. 1023-21-2

Name & address of client:
 Boynton Beach CRA
 915 S. Federal Highway
 Boynton Beach, FL 33435

Nature of the firm’s contract:
 Marine Design Engineering
 Environmental Permitting
 Construction Administration

Owner’s representative’s name, addresses, & phone number:
 Boynton Beach CRA
 915 S. Federal Highway
 Boynton Beach, FL 33435
 POC: Mr. Michael Simon
 (561) 737-3256

Date contract started & ended:
 02/2011 - 2012



Boynton Harbor Marina
City of Boynton Beach, Florida

Scope or nature of contract:

William T. Sadler, Jr., P.E., P.S.M. was responsible for planning, permitting, design and construction administration of the Boynton Harbor Marina located along the waterfront in downtown Boynton Beach. The marina, formerly private owned and operated, is a unique facility comprised of charter fishing vessels, dive boats, private slips and large drift fishing “party” boat that has been operating out of the facility for over fifty (50) years. Scope of work included an evaluation of the condition of the facility as relating to the dock structures, utility infrastructure and slip sizes and make recommendations for improvements. Final design included full replacement of the docks and utilities factoring in structural adequacy, low maintenance, constructability, aesthetics, public safety and ADA conformity.

Present status of the contract:
 Construction Complete





Appendix C: Representative Projects
City of Riviera Beach
Marine/Coastal Engineering Consulting Services
for the Riviera Beach Marina
RFQ No. 1023-21-2

Name & address of client:

Apeiron Miami
 11111 Biscayne Blvd
 Miami, FL 33181

Nature of the firm’s contract:

Design Engineering
 Environmental Permitting

Owner’s representative’s name, addresses, & phone number:

Apeiron Holdings, LLC.
 11111 Biscayne Blvd
 Miami, FL 33181
 POC: Mr. Muayad Abbas
 (305) 400-4321

Date contract started & ended:

04/2015 – 2018



APEIRON

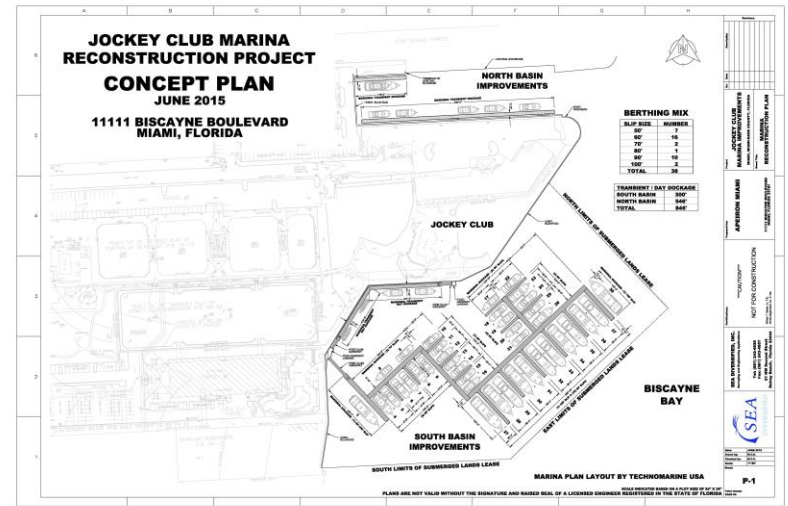
THE JOCKEY CLUB

Scope or nature of contract:

William T. Sadler, Jr., P.E., P.S.M. was responsible for design and permitting services relating to the construction of a private marina located adjacent to 11111 Biscayne Boulevard, Miami, Florida. SDI was contracted by Apeiron to assist in the acquisition of county, state and federal permits for the reconstruction of the marina. The facility shall be reconstructed at the same location and configuration as the original facility, changing from fixed to floating docks within the south marina basin area.

Present status of the contract:

Permitting and Design Complete – Construction Pending



The Jockey Club Marina Redevelopment
Miami, Florida





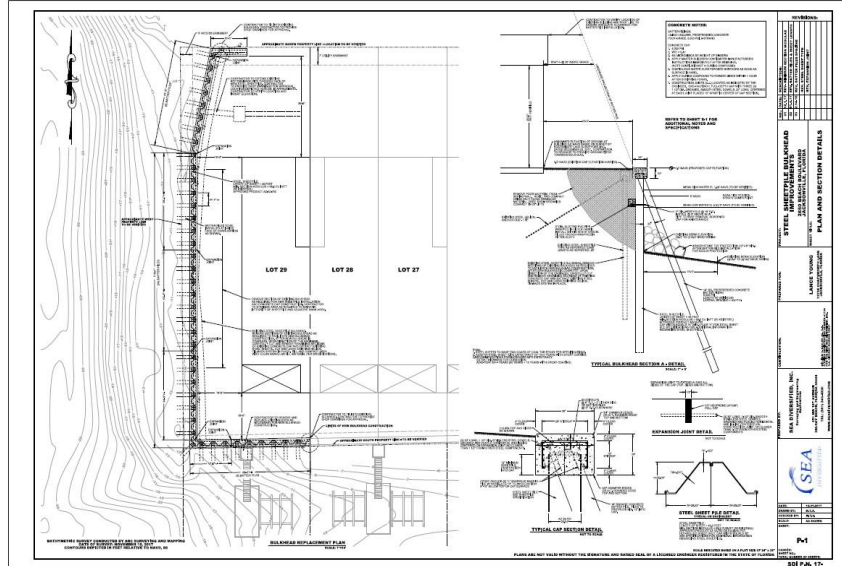
Appendix C: Representative Projects
City of Riviera Beach
Marine/Coastal Engineering Consulting Services
for the Riviera Beach Marina
RFQ No. 1023-21-2

Name & address of client:
Channelside of Jax, LLC
2650 Beach Boulevard
Jacksonville Beach, FL 32250

Nature of the firm's contract:
Marine Design Engineering
Environmental Permitting
Construction Administration
Geotechnical Investigations

Owner's representative's name, addresses, & phone number:
Channelside of Jax, LLC
2650 Beach Boulevard
Jacksonville Beach, FL 32250
POC: Mr. Lance W. Young
(904) 742-5436

Date contract started & ended:
12/2017 –05/2018



Channelside Post-Storm Hurricane Irma
Bulkhead Improvements
Jacksonville, Florida

Scope or nature of contract:

Design engineering, permitting, construction administration, and geotechnical services to support the post-storm Hurricane Irma repairs and improvements of the bulkhead/seawall at Channelside property. Project encompasses a steel sheetpile wall with concrete batter pile system. Estimated construction cost \$600,000.

Present status of the contract:

Construction completed on-time and within budget in 2018.



Appendix C: Representative Projects
City of Riviera Beach
Marine/Coastal Engineering Consulting Services
for the Riviera Beach Marina
RFQ No. 1023-21-2

Name & address of client:

Intergrated Construction Management, Inc. (ICMI)
 7011 N. Atlantic Avenue, Ste 202
 Cape Canaveral, FL 32920

Nature of the firm’s contract:

Marine Design Engineering
 Environmental Permitting
 Construction Administration
 Bathymetric/Topographic Surveys
 Geotechnical Investigations

Owner’s representative’s name, addresses, & phone number:

NASA
 John F. Kennedy Space Center
 OP-ES, B1g N6-1009 (CIAO)
 Kennedy Space Center, FL 32899
 POC: Ms. Shannon O’Boyle
 (321) 613-2940

Date contract started & ended:

12/2016 – 03/2018



NASA Jay Jay Railroad Bridge
Post-Storm Matthew Bulkhead Repair Project
Titusville, Brevard County, Florida

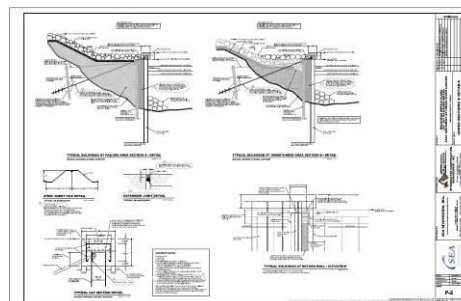
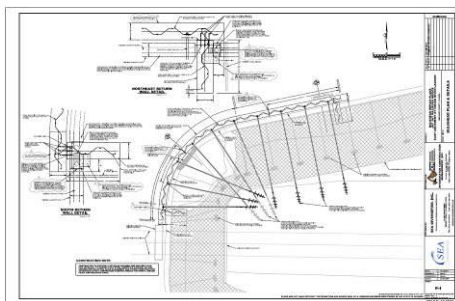


Scope or nature of contract:

Emergency response design engineering, surveying, permitting and construction administration services for bulkhead repair of the Jay Jay Railroad Bridge east abutment post-storm damage caused by Hurricane Matthew. Bulkhead consisted of steel sheetpile wall with helical anchor lateral support system and concrete cap. Hydrographic and topographic survey data collection to support design and permitting services. Design included stone armor protection.

Present status of the contract:

SDI completed project on-time and within budget. Construction completed in March, 2018.



Sea Diversified, Inc.
160 Congress Park Drive, Suite 114
Delray Beach, Florida 33445
561.243.4920
www.seadiversified.com





EDUCATION

- Master of Science (Candidate)
Marine Biology, Nova
Southeastern University (NSU),
2021.
- Master of Science (Candidate)
Coastal Zone Management, NSU,
2021.
- Bachelor of Science, Marine
Biology, Texas A&M University,
1992.

CERTIFICATIONS

- Enriched Air Nitrox Instructor,
PADI (1997)
- Scientific Diver Certification,
AAUS (1993-2021)
- Open Water Scuba Diving
Instructor, PADI (1989)
- Working Diver Certification,
NOAA (1992)
- CPR/Standard First Aid, American
Red Cross (1985 – 2021)
- Oxygen Provider, DAN Instructor
(1994-2021)

EXPERIENCE

- **2015 to Present: Pinnacle Ecological, Inc. – President.** Conducts environmental assessments of marine resources and essential fish habitat in association with beach nourishment, port expansion and dredging, and other coastal and offshore development activities. Implements comprehensive habitat damage assessment and restoration projects particularly associated with hard bottom, coral reef, and seagrass communities.
- **2008 to 2015: Pinnacle Group International, LLC. – Managing Director.** Implemented comprehensive environmental baseline assessments of benthic marine resources and essential fish habitats. Provided QA/QC to ensure project adherence to permit requirements. Planned, permitted, and implemented large scale habitat damage assessment and restoration projects in BBNAP and FKNMS. Employed scientific diving and safety management protocols to safely conduct extensive habitat delineation and GIS mapping of environmentally sensitive resources.
- **1994 to 2008: Continental Shelf Associates, Inc. – Project Manager and Staff Scientist.** Served as Project Manager and Chief Scientist on numerous multi-disciplined environmental impact assessments, resource characterization and mapping surveys, habitat and resource restoration, video and still photographic documentation surveys, and environmental monitoring programs.
- **1987 to 1994: Texas A&M University – Research Specialist and Diving Supervisor.** Conducted research on Kemp's Ridley sea turtles (*Lepidochelys kempii*, Garman). Research focused on sea turtle utilization of nearshore waters of the northwestern Gulf of Mexico to understand factors influencing Kemp's Ridley in-water abundance and distribution.
- **1990 to 1992: National Marine Fisheries Service – Marine Biologist.** Tracked Kemp's Ridley (*L. kempii*) sea turtles with satellite and radio/sonic telemetry along the Georgia coast. Migration and diving behavior was observed and documented. Conducted research on the ecological effects of U/W explosives relative to biological assemblages on offshore structures.

PROFESSIONAL PROFILE

Mr. Fitzgerald is an accomplished marine biologist with over 30 years of experience conducting ecological field studies of benthic communities. His expertise include design, management, and implementation of multi-disciplinary environmental science studies for regulatory and permit compliance. He has served as Project Manager, Chief Scientist, and Dive Safety Officer (DSO) on hundreds of oceanographic and environmental studies throughout Florida and in similar habitats around the world. Mr. Fitzgerald routinely performs environmental field studies in nearshore hardbottom and seagrass habitats associated with beach nourishment, dredging, and other coastal development activities. As a leader in the scientific diving community and veteran DSO, his diving experience includes thousands of scientific dives performing biological surveys to assess and characterize coastal and oceanic ecosystems. As an experienced senior scientist, Mr. Fitzgerald regularly conducts GIS mapping, coastal hydrodynamic studies, coral and seagrass habitat restorations, and comprehensive environmental monitoring programs. He continues to pioneer the use of scientific technology for improving safety, efficiency, and data quality. He is skilled at collecting and managing complex data sets, the use of QA/QC protocols, and production of peer-reviewable scientific publications. Throughout his professional career, Mr. Fitzgerald has actively engaged with Government agencies and other industry professionals, working collaboratively and effectively, to develop successful solutions to complex and occasionally controversial marine ecological projects. Receiving the Coastal Partnership Award, Mr. Fitzgerald was recognized by the Florida Keys National Marine Sanctuary (FKNMS) for his leadership and professional contributions in coral reef damage assessment, reef rehabilitation, and coral transplantation.



RELEVANT PROJECT EXPERIENCE

- **Beach Nourishment Hardbottom Monitoring – Broward County, Florida.** Completed biological monitoring associated with the 2015 Hillsboro/Deerfield Beach Nourishment Project. The monitoring effort was performed in partial fulfillment of project permits (Florida Department of Environmental Protection (FDEP) Permit Number 0289706-006-JN; US Army Corps of Engineers (USACE) Permit Number SAJ-1997-02355(MOD-LCK); and Broward County Environmental and Growth Protection Permit Number DF-14-01082). The westernmost edge of nearshore hardbottom habitat was mapped from 0.35 miles north of the Deerfield Beach International Fishing Pier (Pier) to 2.3 miles south of the Pier. Additional data collected included: sediment depth measurements, sediment coverage documentation, video documentation of marine resources, and percent cover of benthic macroinvertebrate and macroalgal communities along previously established shore perpendicular transects in and adjacent to the project area. Monitoring data included ESA listed species. Current 2016 BMPs were used to collect monitoring data for completion of the 2016 Year 1 Post-Construction Survey report with comparisons to historical results from the 2014 and 2015 Pre- and Post-Construction Surveys. Used a variety on parametric and non-parametric statistical analyses to examine the relationship between results from the current (2016) and baseline (2014) surveys.
- **Seagrass Assessment and Resource Survey – Broward County, Florida.** Conducted a seagrass assessment survey at Hugh Taylor Birch State Park in Broward County, Florida. The seagrass survey was conducted in support of a proposed rock revetment construction project and floating dock installation. The objective of the assessment survey was to identify, delineate and map marine benthic resources in vicinity of the proposed project area which could be impacted by construction related activities. The total seagrass habitat delineated and mapped during the seagrass assessment study was 21,473 meters² (5.3 acres). The results of the seagrass assessment survey were used to complete a Florida Unified Mitigation Assessment Methodology (UMAM) and develop Seagrass Mitigation and Monitoring Plans.
- **Habitat Characterization and Mapping – Palm Beach County, Florida.** Characterized and mapped seagrass and hard bottom habitat located adjacent to the ICWW in Lake Worth Lagoon. This assessment survey was conducted in support of a pre-dredging permit for the Florida Inland Navigational District. The objective of the benthic assessment and resource survey was to delineate and map benthic habitats throughout the entire survey area including seagrass and hardbottom habitats, to identify and quantify resources occurring in these habitats, and to collect stony coral size data. The benthic assessment survey identified benthic habitats and associated marine resources in vicinity of the proposed project which could be impacted by dredging and dredging related activities. Florida UMAMs were completed for each habitat type delineated during the assessment survey.
- **Benthic Assessment and Seagrass Survey – Palm Beach County, Florida.** Characterized and mapped seagrass habitat located adjacent to the ICWW in south Lake Worth Lagoon. This assessment survey was conducted in support of a proposed marina development project. The purpose of this study was to survey the lagoon bottom in vicinity of the proposed construction project and document any associated seagrasses, particularly Johnson's seagrass (*Halophila johnsonii*) which could be impacted by the footprint of the proposed dock extension or any construction related activities. The survey was conducted in two phases in accordance with recommendations by the National Marine Fisheries Service recovery plan for Johnson's Seagrass. The first phase was conducted to delineate, identify and map existing seagrass beds in vicinity of the study area. The second phase was used to determine seagrass densities using quantitative sampling methods including Braun-Blanquet and shoot densities (shoots/m²). Species of special concern also were monitored during the survey.
- **Coral Reef Restoration and Coral Relocation – Miami-Dade County, Florida.** Served as chief scientist and project manager while conducting coral relocation activities for the USCG Miami Main Channel Aids to Navigation (ATON) Entrance Range Replacement Project. A preconstruction survey was conducted to identify marine resources that could be impacted during construction related activities and to identify and delineate resources for avoidance and potential relocation. With authorization and a special activity license (SAL) from FWC, over 1,000 corals and ESA listed species were relocated during the project.



COMPANY OVERVIEW

PINNACLE ECOLOGICAL, INC. (Pinnacle) is an environmental science consulting company supporting permit acquisition and compliance for estuarine, coastal, and offshore marine development activities. Located in Boynton Beach, Florida (Address: 1314 Neptune Drive, Suite 5, Boynton Beach, Florida 33426; Phone Number: 561-699-2609). Pinnacle has been in business for over ten (10) years; and is a certified Small Business Enterprise (SBE) in Palm Beach County. Pinnacle's staff, which includes six (6) marine scientists, has extensive experience studying coastal resources in Palm Beach County and throughout southeast Florida.

Pinnacle provides environmental science services for government and private industry. Pinnacle's unique expertise focus on environmental impact assessments, benthic assessment and monitoring surveys, habitat characterization and GIS mapping, field-data collection, quality assurance/quality control (QA/QC) data management, environmental permitting and permit compliance, coastal hydrodynamics (waves, currents, tides, and flushing) data acquisition, marine habitat restoration, and scientific dive training and safety management. Pinnacle focuses on environmental due diligence, feasibility, and risk assessment studies to identify potential short and long term risks associated with beach nourishment, port dredging, and related coastal development. Through the use of the scientific evaluation methods including the Unified Mitigation Assessment Method (UMAM) and Habitat Equivalency Analysis (HEA), Pinnacle can investigate the potential environmental and economic impacts to important resources including seagrass, marsh, corals, natural and artificial reefs, and mangrove habitats. With over 30 years of experience, Pinnacle's scientists have studied seagrass and/or coral reef ecosystems in nearly every coastal county in Florida. Additionally, Pinnacle provides reasonable, cost effective solutions for avoidance, minimizing, and/or mitigating irreversible environmental impacts that may affect water quality, fishing, tourism, and resource health. Pinnacle's environmental emergency response service provides rapid deployment of professional scientific field teams to assess environmental conditions and initiate mitigation measures to limit ecological impacts. Pinnacle is recognized throughout the industry as experts in the field of marine environmental science, implementing sound scientific methodology, and producing exemplary peer reviewed scientific reports which contribute to streamlining the environmental permit process from concept through completion by avoiding potential impacts and maintaining project schedules.

The marine scientists at Pinnacle have extensive experience and expertise conducting environmental field surveys associated with beach nourishment, dredging, and seawall construction throughout Florida. Pinnacle's key personnel have conducted environmental surveys in numerous estuarine habitats throughout Lake Worth Lagoon in Palm Beach County. The team at Pinnacle has been recognized by the National Oceanic and Atmospheric Administration (NOAA) and the Florida Keys National Marine Sanctuary (FKNMS) as leaders in habitat assessment and restoration. Pinnacle is also licensed by the Florida Fish and Wildlife Conservation Commission (FWC) to provide professional manatee and sea turtle observer services. Pinnacle has demonstrated particular expertise with conducting *in situ* surveys for species of commercial and recreational importance and threatened and endangered species including Johnson's seagrass (*Halophila johnsonii*) and acroporid corals throughout south Florida.



MOHAMED A. DABEES, PHD, PE, D. CE, Vice President

YRS. OF EXPERIENCE: 27 | YRS. WITH H&M: 21

CAREER SUMMARY:

As a senior engineer and Vice President with Humiston & Moore Engineers (H&M) since 2000, Dr. Dabees has become a key component to the firm's continued success. Dr. Dabees is recognized internationally as an expert in the field of coastal modeling and has established innovative procedures in evaluation of inlet evolution and beach morphology modeling.

Dr. Dabees has worked with the US Army Corps of Engineers (COE) Coastal Inlets Research Program CIRP to provide input on the development of inlet morphology modeling. Dr. Dabees contribution to beach morphology modeling also include the development of long-term beach evolution model NLINE. The NLINE model simulates long-term sediment transport and nearshore morphology over complex bathymetry, nearshore hardbottom and interaction with coastal structures.

Dr. Dabees' contribution to the research of tidal inlets and beach morphology modeling is documented through numerous publications and technical reports. He has completed numerous regional and local modeling studies of tidal inlets, estuaries, barrier islands and erosion control structures throughout the state of Florida.

His contribution to research and development is recognized over the past 20-years through regular participation in reputable international conferences, publications, editorial reviews and collaboration with coastal engineering institutions in North America, Europe, Australia and Japan.

RELEVANT EXPERIENCE:

Model Development Developed and improved the NLINE model's practical capabilities through many applications of the model in support of beach and erosion control projects over the past 21 years. The model has gained acceptance from State and Federal agencies through applied design and permitting of projects in Florida and has achieved international recognition.

Coastal Process Modeling-Tidal inlets and estuaries

Under the direction of Dr. Dabees, H&M has completed numerous regional models for bay and estuarine systems in Florida, including Sarasota Bay and much of Tampa Bay, and other bay/inlet systems in Florida. The regional approach allows simulations of large bay systems that include multiple inlets providing more accurate evaluations of flow rates, current velocities and identification of areas of active sediment movement. The regional approach includes coupled detailed local models for wave, sediment transport and inlet evolution to evaluate inlet and beach morphology for various alternatives and engineering actions. This approach was successfully implemented in numerous inlet management projects including barrier Island and inlet evolution at several inlets in Southwest and central Florida.

Clam Pass inlet management review presentation <https://vimeo.com/443377948>

Coastal Process Modeling - Beach Restoration Dr. Dabees has been responsible for the technical evaluation of the coastal processes and historical shoreline morphology as

ROLE:

Principle Engineer

EDUCATION:

Ph.D., Civil Engineering,
Queens University, 2000

M.S., Civil Engineering,
Drexel University 1995

M.S., Engineering
Management, Drexel
University, 1995

B.S., Civil Engineering,
Alexandria University,
1988

REGISTRATIONS & CERTIFICATIONS:

Professional Engineer,
Florida No. 58003

American Society of Civil
Engineers, Member

Academy of Coastal,
Ocean, Port and
Navigation Engineers,
Diplomate,
Communication
Committee member



well as the evaluation of design alternatives and project performance for numerous beach restoration projects throughout Florida.

Coastal Process Modeling - Erosion Control Structures and Nearshore Hardbottom. Dr. Dabees has completed numerous studies and evaluation of design alternatives for complex coastal erosion problems, including modeling for the City of Deerfield, Broward County segment I, Town of Palm Beach, as well as Palm Beach County. Such modeling areas include extensive hard-bottom in the nearshore and existing coastal structures.

Beach evolution Study for Deerfield/ Hillsboro Beaches and evaluation of erosion hot spot. City of Deerfield, Broward County, Florida- Prepared detailed study of regional beach evolution and evaluation of chronic erosion problem area. The study included review historic information, data collection, monitoring, numerical modeling and analysis. The study was based on data analysis and varying model applications that provided comprehensive understanding on the evolution of the coastal system and identified major factors influencing the problem area.

The New St. Petersburg Pier, Coastal Engineering Services - Design, permitting and construction observation of marine construction elements of the new Pier park area including beach design, breakwaters, revetments, old seawall relocation and coastal engineering support to main pier design. Coastal engineering support of the pier design included regional wave modeling for Tampa Bay, wave loadings on pilings, buildings and pier deck, Design consideration for the adjacent park included creation of a pocket beach (Spa beach) with offshore breakwater and oyster reef and enhancement to sea grass bed areas.

RECENT PUBLICATIONS:

Dabees, M. (2020). Beach Planform Equilibrium, Application and Methodologies for Climate Change Resiliency Consideration. Coastal Engineering Proceedings, (36v), management.43. <https://doi.org/10.9753/icce.v36v.management.43>
<https://youtu.be/gWsbmi6Vlo0>

Dabees M., Fleming M., and Damon M., (2019) Coastal Processes and Morphologic Features of Florida Headlands, Case Studies in South and Central Florida, USA. Proceedings. International Symposium on Coastal Sediments, Florida, USA. World Scientific. https://www.worldscientific.com/doi/abs/10.1142/9789811204487_0229

Dabees M. A. (2018), Hurricane Irma's Morphologic Response on Beaches and Tidal Inlets In Southwest Florida, USA, Proc. Of the 36th International Conference on Coastal Engineering, Baltimore, USA
<http://www.eventscribe.com/2018/ASCE-36ICCE/assets/handouts/675702.pdf>

Dabees M. A. (2017), Evolution of Barrier Island Sand Spits and Effects on Beach Management Practices. Case Studies in Central Florida Gulf Coast, USA. Proceedings of Coastal Dynamics 2017, Helsingor, Denmark.
http://coastaldynamics2017.dk/onewebmedia/040_DabeesM.pdf

Dabees M.A. and B.D. Moore (2014), Evaluation of Beach Erosion Up-Drift of Tidal Inlets in Southwest and Central Florida, USA. Proceedings of 34th Conference on Coastal Engineering, Seoul, Korea, 2014
https://journals.tdl.org/icce/index.php/icce/article/view/7918/pdf_934

Rosati, J.D., Dabees, M., and Tanner, W. (2011), Inlet Reservoir Model, Part II: PC-Interface. Coastal and Hydraulics Engineering Technical Note ERDC/CHL CHETN-IV-xx -. Vicksburg, MS: U.S. Army Engineer Research and Development Center.
<https://cirpwiki.info/wiki/Publications:CIRP-WN-12-1>

Dabees M.A. and B.D. Moore (2011), Inlet Evolution Modeling of Multiple Inlet Systems In Southwest and Central Florida. Journal of Coastal Research, Special Issue 59. <http://www.icronline.org/doi/abs/10.2112/SI59-013.1>

Dabees M.A. B.D. Moore, and K.K. Humiston (2011), Evaluation of Tidal Inlets Channel Migration and Management Practices in Southwest Florida., Proc. Coastal Sediments 2011, World Scientific.
https://www.worldscientific.com/doi/abs/10.1142/9789814355537_0037

Dabees M.A. and B.D. Moore (2010), Evaluation of Inlet Management Practices at Navigation Inlets in Southwest Florida., Proc. of the 32nd International Conference on Coastal Engineering, China.
<https://icce-ojs-tamu.tdl.org/icce/index.php/icce/article/view/1898>

Dabees, M.A. and N. Kraus (2008), Cumulative Effects of Channel and Ebb Shoal Dredging on Inlet Evolution in Southwest Florida, USA, Proceedings of the 31st International Conference on Coastal Engineering, Hamburg, Germany. World Scientific, pp2303-2315 <http://cirp.usace.army.mil/Downloads/PDF/dabees-kraus-ICCE08.pdf>



MARC DAMON, M.Sc., P.E.

YRS. OF EXPERIENCE: 16 | YRS. WITH H&M: 16

CAREER SUMMARY:

Mr. Damon expertise include technical analysis for beach restoration and erosion control studies, design and permitting. Mr. Damon has a strong mathematical background and has extensive experience in numerical modeling, data processing, visualization, and statistical analysis.

RELEVANT EXPERIENCE:

Coastal Process Models & Analysis .

Mr. Damon experience in applications of numerical modeling of wave propagation and coastal processes using various numerical modeling systems including:

- XBeach developed by Deltares (Netherlands) with funding support from the USACE to assess dune stability and hindcasting of hurricane impacts. It is a state of the art dune erosion model which was designed to provide insight into the nearshore coastal processes such as swash zone and berm interactions as well as dune dynamics and breaching. This model is suitable for short term simulations in the time domain for the duration of a storm. Mr Damon has successfully applied this model to assess dune resiliency during high frequency storms, evaluate the short-term shoreline response to erosion control structures and evaluate potential flow around upland structures during a 100-year storm surge.
- CMS-Wave and CMS-Flow are components from the USACE supported modeling Surface-water Modeling System (SMS). This is a wave phase averaged model suitable for long term morphology simulations of several years. Mr Damon has successfully applied this model to projects on the West Coast and East Coast of Florida for projects including beach nourishment and coastal structures.
- Bouss-2D model is a component from the SMS model suite. It provides time domain wave modeling for wave-structure interactions and applications to erosion control structures such as breakwaters and groins. Mr Damon experience include applications of existing structures as well as in the design phase of proposed erosion control structure projects.
- Wave Watch III is a hindcast wave model developed by NOAA from buoys around the world. Mr Damon developed mathematical models to extract and process the WWIII data at specific location enabling access to over a dozen years of wave records in a timely manner.

ROLE:

Senior Engineer

EDUCATION:

M.S., Coastal Engineering, Florida Institute of Technology, 2003

B.S., Ocean Engineering, Florida Institute of Technology, 2001

REGISTRATIONS & CERTIFICATIONS:

Professional Engineer, Florida No. 70615

American Society of Civil Engineers, Member



Beach Nourishment – Borrow Area Design. Mr. Damon leads the H&M team for geotechnical evaluation of potential borrow areas and the relative compatibility of sediment with the native beach conditions. Using various adopted procedures recognized in the Corps of Engineers' Coastal Engineering Manual, Mr. Damon has developed a statistical approach toward evaluation and design of borrow areas for beach nourishment projects.

Data Reduction, Processing. Mr. Damon provides technical support of data processing. When working with complex LIDAR data sets of hydrographic data, Mr. Damon applies Matlab routines to process large amounts of data for various applications.

FEMA Wave Modeling – LOMR. Mr. Damon has established experience, and knowledgeable command with the application of the FEMA Coastal Hazard Analysis Modeling Program (CHAMP). Mr. Damon has been responsible for coordinating numerous applications of the CHAMP model for evaluation of flood zone designations and the filing of requests for Letters of Map Revision (LOMR). Mr. Damon has established a reputable rapport with the FEMA Contractors for various regions in the processing of the LOMR requests resulting in successful track record in numerous LOMR projects.

HUMISTON & MOORE ENGINEERS – FIRM QUALIFICATIONS

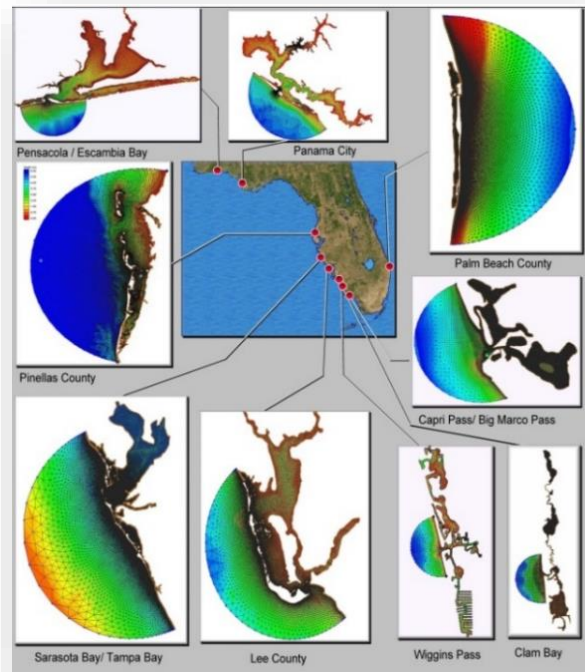
HUMISTON & MOORE ENGINEERS



Humiston & Moore Engineers (H&M) located in Naples, Florida, has been providing specialized services for over 30 years. Since the founding of the company in 1991, H&M has established itself as a significant contributor to the field of coastal engineering, particularly in Florida. H&M has a well experienced coastal engineering staff and has proven experience in the field of coastal engineering and erosion control design through the practical yet innovative application of sustainable technologies. H&M has state-of-the-art coastal modeling capabilities including coastal processes, inlet morphology, waves, sediment transport, and regional and localized hydrodynamic modeling.

H&M's success with complex coastal engineering projects is not only a function of the firm's technical capabilities but also extensive experience with the design and performance of coastal projects and the state and federal regulatory permitting processes. This experience has broadened with hands on coastal engineering design and management experience. H&M has proficient and successful experience with the State of Florida DEP Joint Coastal Permitting (JCP) reorganized under the Water Resources Management Division, U.S. Army Corps of Engineers permitting, DEP Environmental Resource Permitting, and the State DEP Coastal Construction Control Line permitting programs, as well as the State DEP Beach Management Funding Assistance Program.

Computer Modeling Capabilities: One of the areas in which H&M has been a leader is in technical development and application of advanced modeling procedures. H&M's staff includes internationally recognized expertise in this field, who have developed numerical models and advanced modeling procedures. H&M contribution to the research and development of coastal processes modeling and application is well documented through publications and technical reports. Additionally, H&M has developed an in-house algorithm for efficient synthesis of data from the National Oceanic and Atmospheric Administration (NOAA) integrated Wave Watch III wave database as well as the large data sets associated with the LIDAR data files generated by NOAA and the USACE.





Letter of Intent
To Provide Engineering Consulting Services
for
City of Riviera Beach RFQ 1023-21-2
MARINE COASTAL ENGINEERING AND CONSULTING
SERVICES

To: William T. Sadler, Jr.
Sea Diversified, Inc.
160 Congress Park Drive
Suite 114
Delray Beach, FL 33445

Mr. Sadler,

Brannon & Gillespie, LLC has worked with Sea Diversified over the past twenty years, and has participated in the redevelopment of the Riviera Beach City Marina over the past several years. Brannon & Gillespie is herein expressing our intent to work with Sea Diversified as a sub-consultant focusing on electrical design and related project design aspects as required for this engagement.

Danny P. Brannon, P. E.
Brannon & Gillespie, LLC
631 US Hwy 1, Ste 301
North Palm Beach, FL 33408

Date: March 18, 2021



Ron DeSantis, Governor



FBPE
FLORIDA BOARD OF
PROFESSIONAL ENGINEERS

STATE OF FLORIDA

BOARD OF PROFESSIONAL ENGINEERS

THE PROFESSIONAL ENGINEER HEREIN IS LICENSED UNDER THE
PROVISIONS OF CHAPTER 471, FLORIDA STATUTES

BRANNON, DANNY PAUL

631 US HIGHWAY 1
SUITE 301
NORTH PALM BEACH FL 33408-4620

LICENSE NUMBER: PE25601

EXPIRATION DATE: FEBRUARY 28, 2023

Always verify licenses online at MyFloridaLicense.com



Do not alter this document in any form.

This is your license. It is unlawful for anyone other than the licensee to use this document.



Sea Diversified, Inc.
160 Congress Park Drive, Suite 114
Delray Beach, Florida 33445
Phone: 561-243-4920
www.sediversified.com