



SCHMIDT NICHOLS

LANDSCAPE ARCHITECTURE AND URBAN PLANNING

1551 N. Flagler Dr, Ste 102
West Palm Beach, FL 33401
Phone: 561.684.6141
Email: info@snlandplan.com
Website: www.snlandplan.com
License No: LC26000232

FPL Evolution Hub

Riviera Beach, Florida

Date: 12/03/20
Scale: 1" = 20'-0"
Design By: AM
Drawn By: AM
Checked By: JS
File No. 457.03A
Job No. 20-52

REVISIONS / SUBMISSIONS

02/18/21 Resubmittal

Landscape Plan

LP-1 of 4

LANDSCAPE NOTES

- Easements shall not encroach landscape buffers more than 5 feet.
- Landscaping in right-of-way buffers shall be installed on the exterior side of walls or fences.
- FDOT Type D or F curb shall be provided along the perimeter of all landscape, open space, drainage and grassed areas adjacent to paved vehicular use areas, except where wheel stops are provided.
- Safe sight triangles shall be maintained clear of vegetation to provide unobstructed visibility between 30' and 8' above crown of road.
- Light poles, fire hydrants, electrical/mechanical equipment, signs, drainage structures, etc. shall not interfere with landscaping in terminal islands, parking islands, medians, buffers or other landscaped areas.
- All plant material is to be installed at the height, spread and DBH/Caliper shown in the Plant List, container sizes are given as a suggestion only.
- No muck-grown sod shall be utilized in detention areas.
- All landscape areas (including sod) shall be irrigated with an underground automatic sprinkler system providing min. 150% coverage.
- Trees shown on this plan are for graphic representation only. Tree spacing is based on design requirements and the trees shown on these plans attempt to accomplish that spacing while maintaining the required setbacks from utilities. Trees may be field adjusted to avoid conflicts with driveways and underground utilities. In any case the trees shall be located in the field in accordance with the planting details shown hereon.
- Trees are to be installed with a ten foot (10') separation from any water or sewer main and/ or service, hydrants, and lift stations. If a ten foot (10') separation cannot be achieved, the tree can be installed with a root barrier system. Refer to the "Root Barrier" detail for installation requirements. However, in no case shall a tree encroach into a PSCUE without prior PBCWUD approval and only sod can be installed within 7.5' of a fire hydrant unless otherwise approved by the Fire Marshal.
- All planters shall be excavated to a minimum depth of the native soil on site and back-filled with a suitable soil consisting of fifty percent (50%) composted organic matter, well-mixed with native soil. Backfill material shall be free from rock, construction debris, or other extraneous material.
- All substitutions or modifications from the approved Landscape Plan must be submitted and approved by the Landscape Architect in writing.
- All ground-mounted equipment shall be screened from view.
- Prior to C.O., the site must have 100% sod coverage, including greenspace in the directly adjacent ROW. All disturbed areas must be sodded including all areas used for staging and maneuvering that may not be indicated on the Landscape Plan.

PLANT LIST

TREES	CODE	QTY	BOTANICAL / COMMON NAME	CALIPER	HEIGHT	SPREAD	CLEAR TRUNK	WATER USAGE	STATUS
	BS	5	Bursera simaruba / Gumbo Limbo Single Straight Trunk, No Low Crotch	2.5" Cal.	12'	6'	5' Min.	Low	Native
	P1	16	Pinus elliotti var. Densa / South Florida Slash Pine Single Straight Trunk,	2.5" Cal.	14'	6'	5' Min.	Low	Native
	P2	21	Pinus elliotti var. Densa / South Florida Slash Pine Single Straight Trunk, One 6", 8", and 10" Pine per Grouping for a Total of 24' Ht	Varies	6'-10' OA	4' Min.	4' Min.	Low	Native
	QV	7	Quercus virginiana / Southern Live Oak Single Straight Trunk, Min. 5' CT, No Low Crotch	2.5" Cal.	12'	6'	5' Min.	Low	Native
	ST	6	Sabal palmetto / Transplanted Cabbage Palm ** Transplanted From On Site, Stagger Heights in Groups, Avg. 12" OA Min. Ht. in Groupings	EX.	EX.	EX.	EX.	Low	Native
	SM	5	Swietenia mahagoni / Mahogany Single Straight Trunk, No Low Crotch	2.5" Cal.	12'	6'	5' Min.	Yes	Native

LOCATION MAP

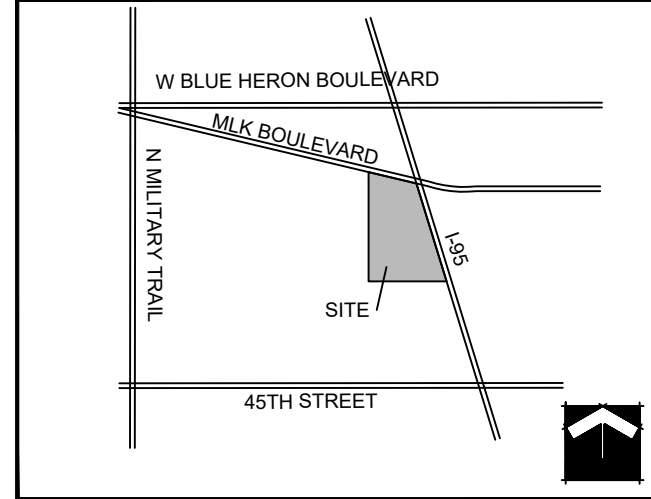
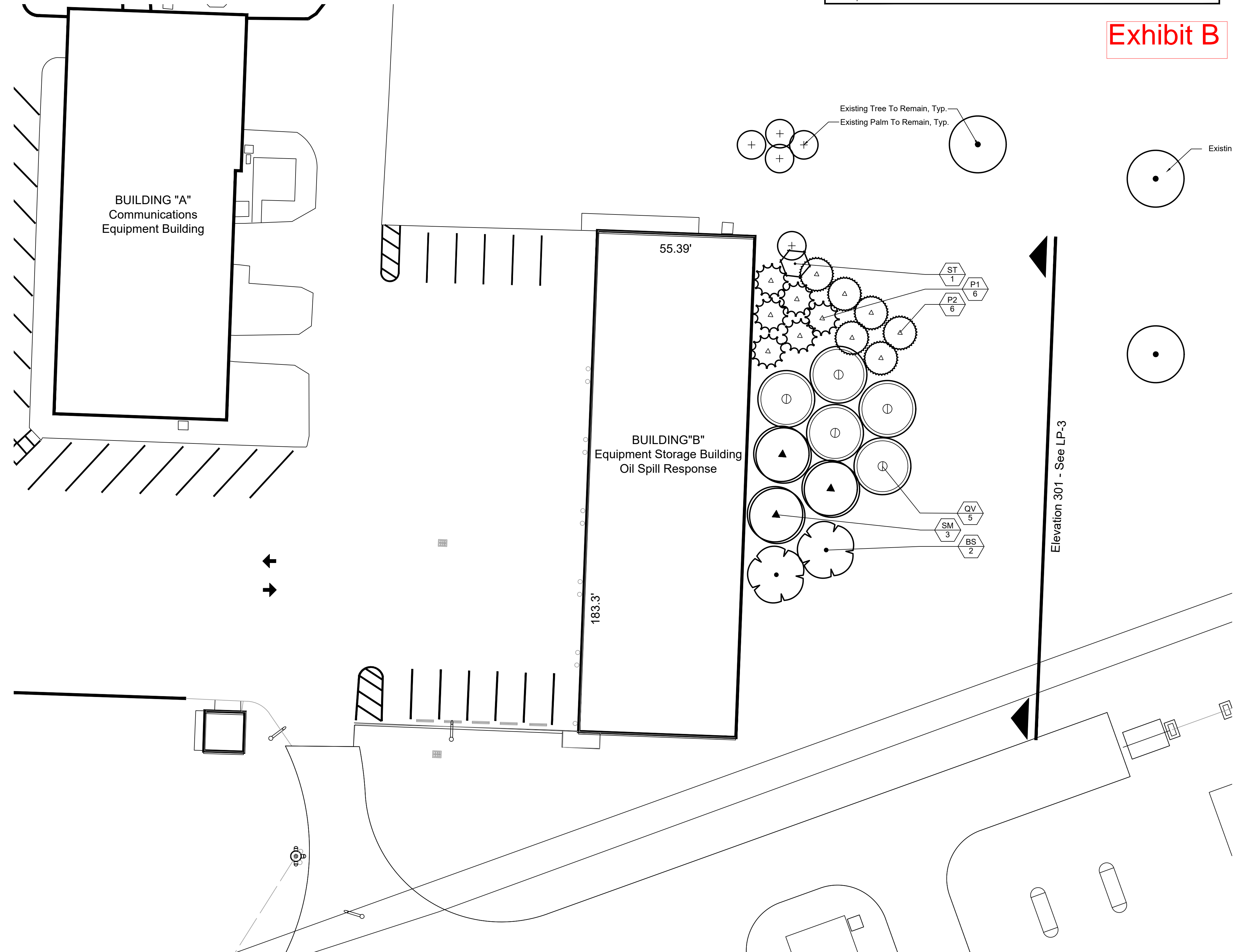
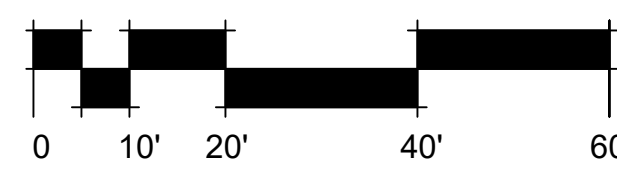


Exhibit B



Know what's below.
Call before you dig.



Scale 1" = 20'-0"

