

YOUTH EMPOWERMENT

Presenter: VALERIE GRIMSLEY, YEP DIRECTOR



REBRANDING AND FACILITIES DISCUSSION





EMERGING COMMUNITY CENTER



ANSWERING THE CALL BY RE-BRANDING

- Meeting the need to provide services to the entire community
- Providing a holistic approach to the community to thrive against all odds
- To become the nucleus in the community where citizens' know where to turn
- Providing community effective services in multiple areas & various times
- Removing life barriers to the most pertinent, so citizens' of all ages can rewrite, revive, and re-structure their life's path





FACILITY IMPROVEMENTS



ADDITIONAL SERVICES TO BE PROVIDED TO THE COMMUNITY

**Vocation
Training**

**Hydroponic/Soil
Gardening**

**Family Mentoring -
Coaching**

**Technology
Media – Virtual
Reality
Programming**

CODING

**CITIZENSHIP
ENGAGEMENT**

**MIND OVER MATTER
MH SERVICES & COACHING**

Health Education



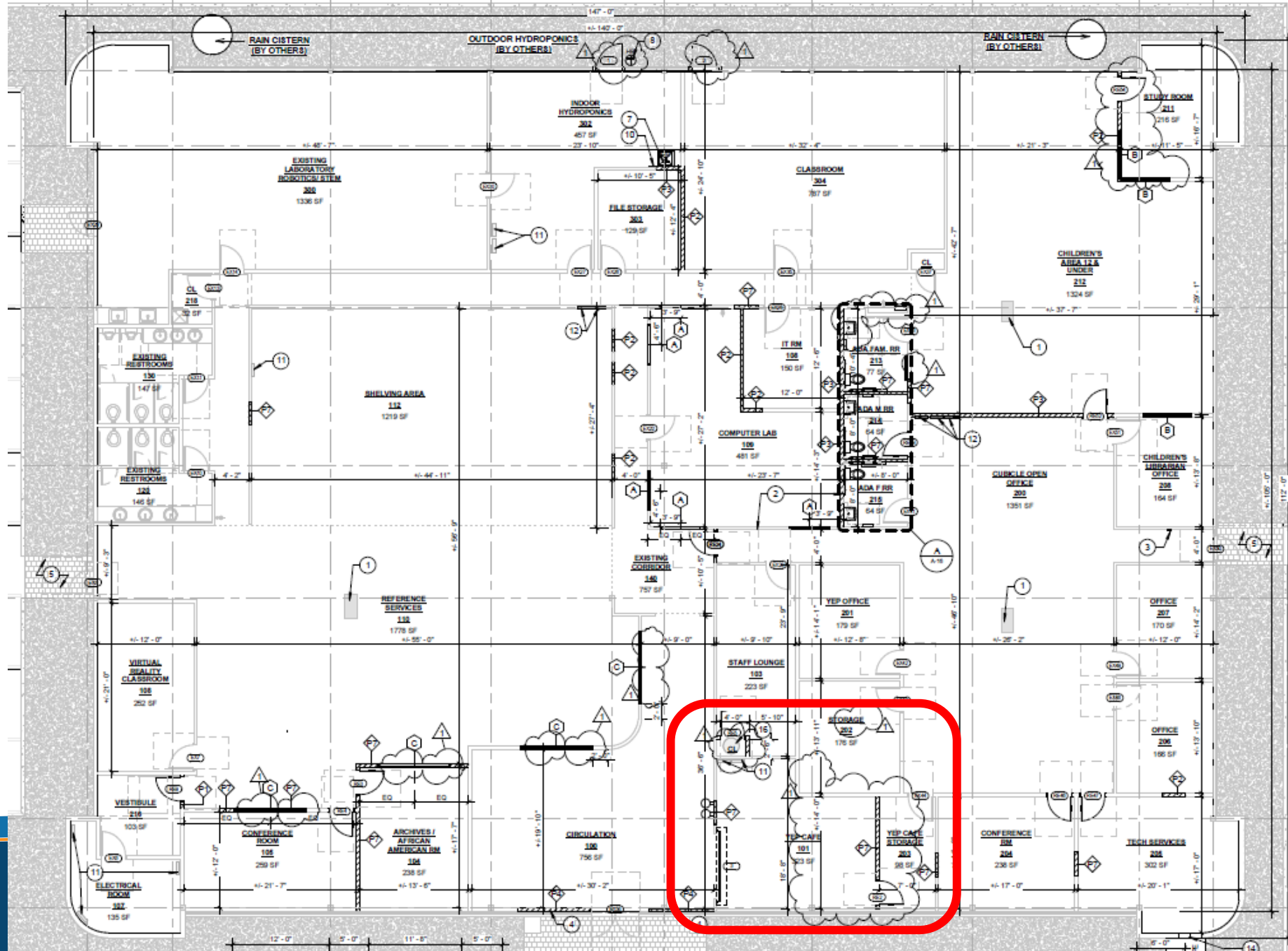
TRIPLE ADONIDIA PALMS
GREEN ISLAND FICUS
GOLD MOUND DURANTA

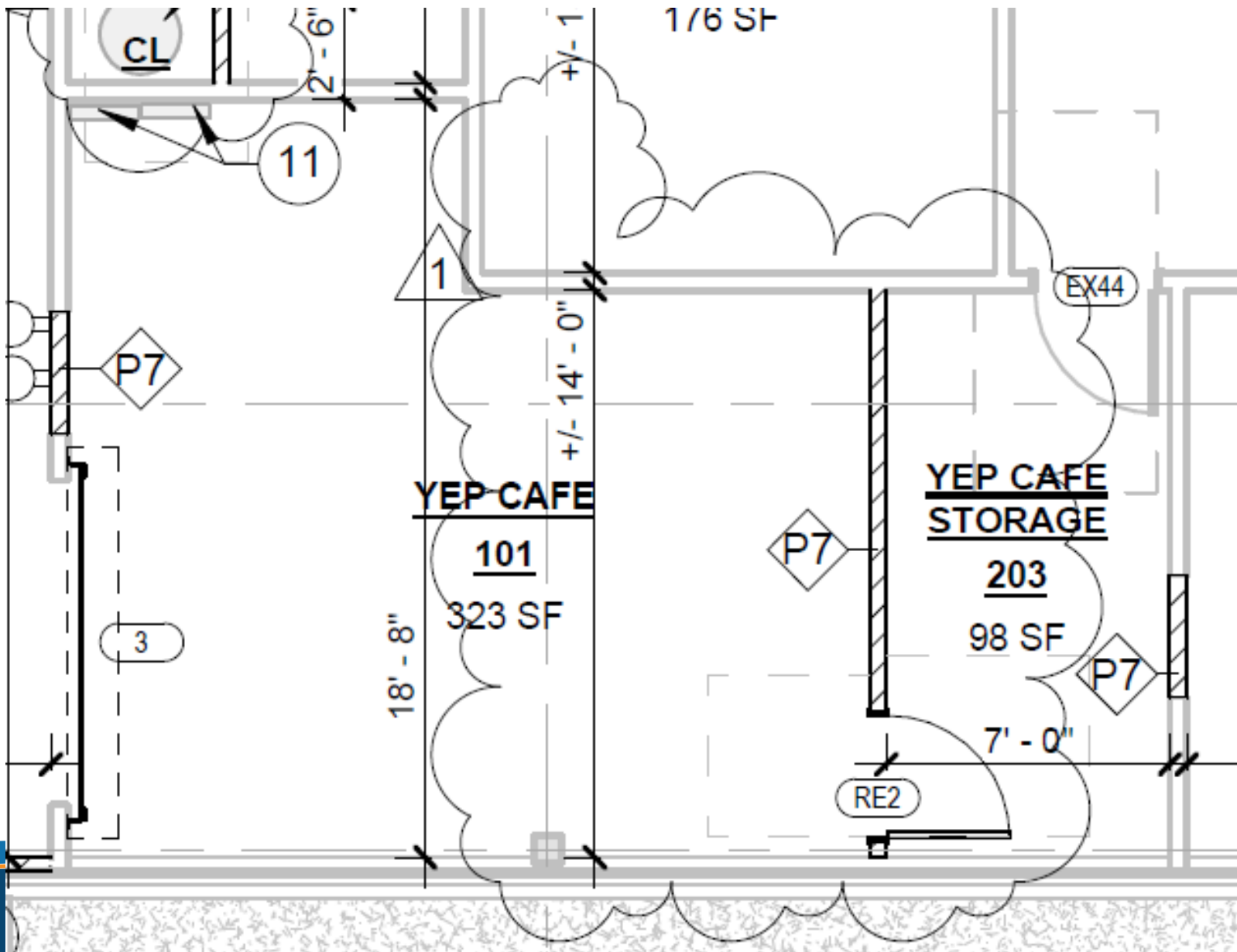
EXISTING ENTRY WALK

PROPOSED PLANTER

HANDICAP
PARKING

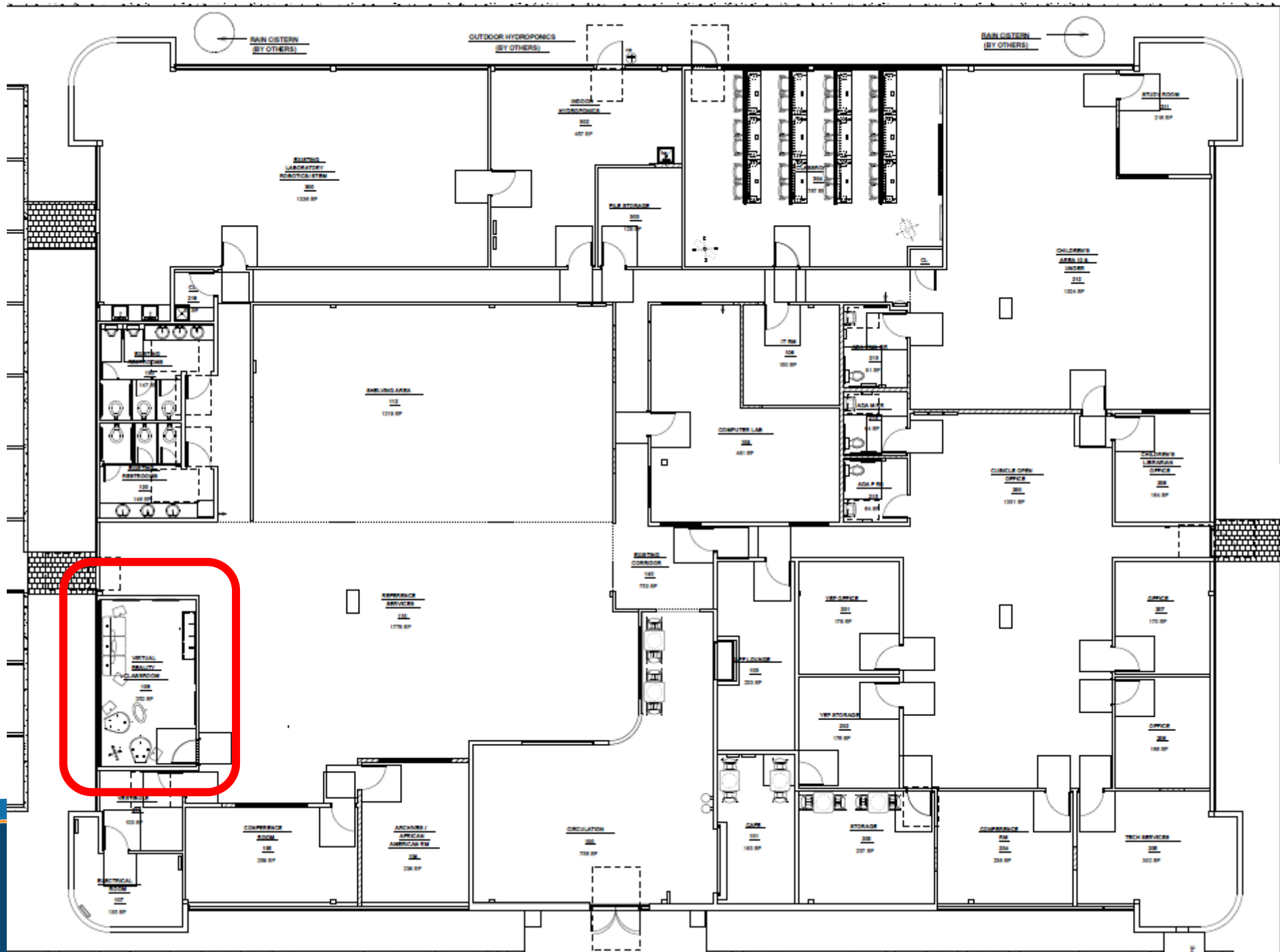
PROPOSED PLANTER
DRY STACK LANDSCAPE BLOCK

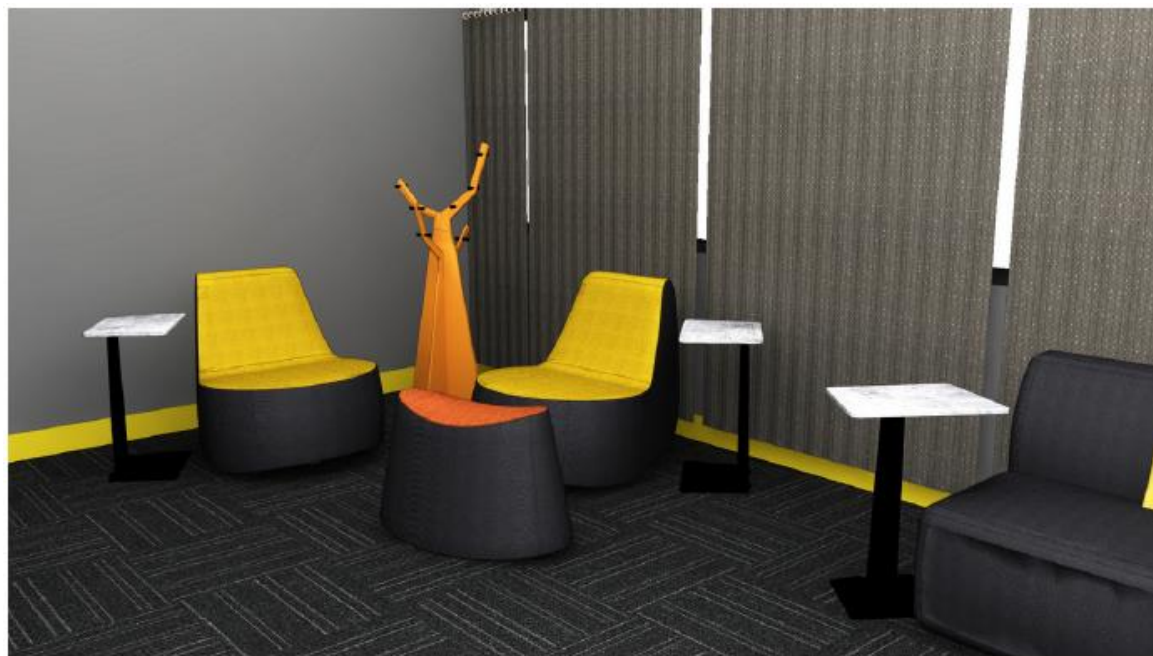
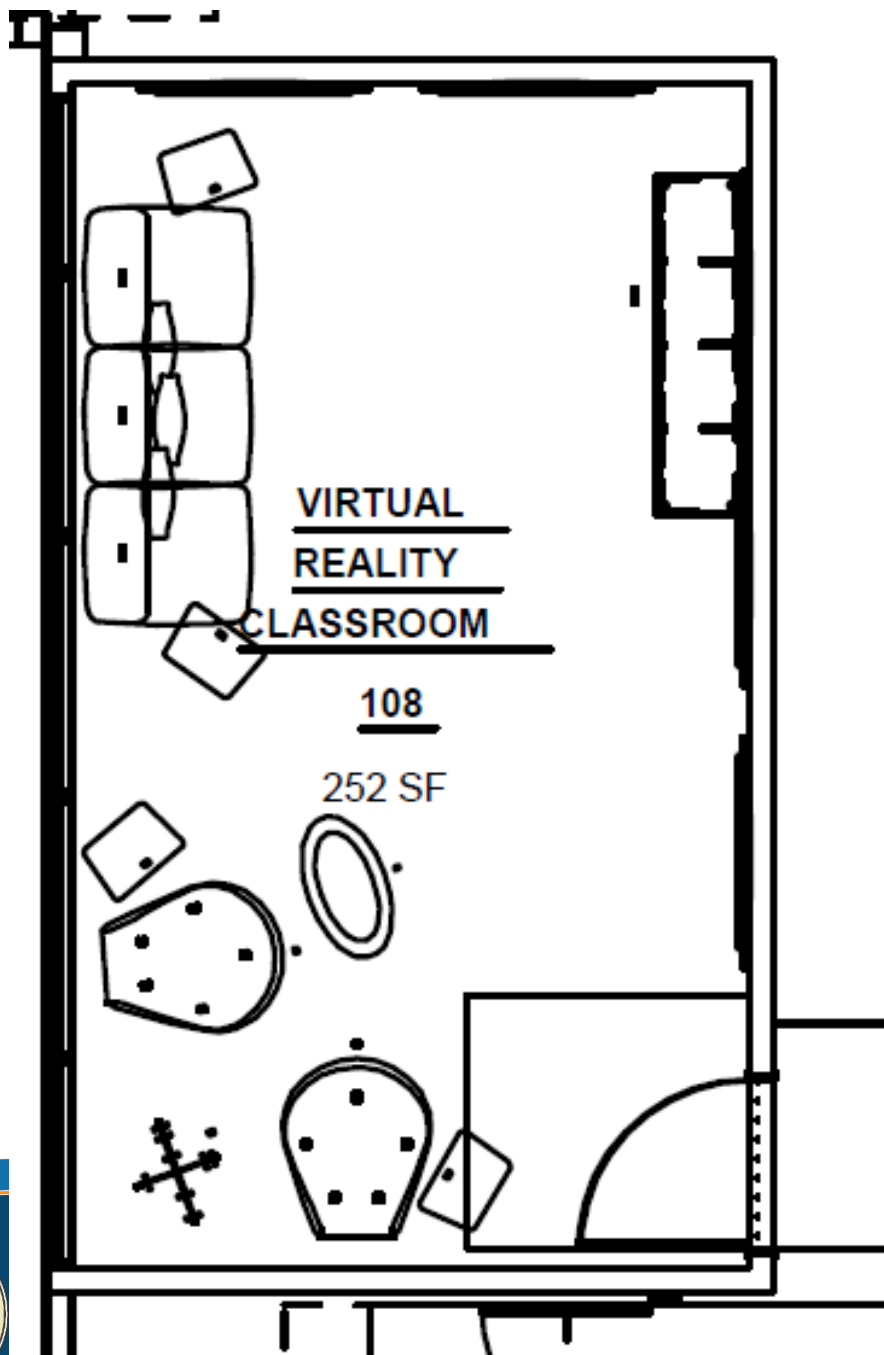




Entrepreneurship
Economic
Empowerment

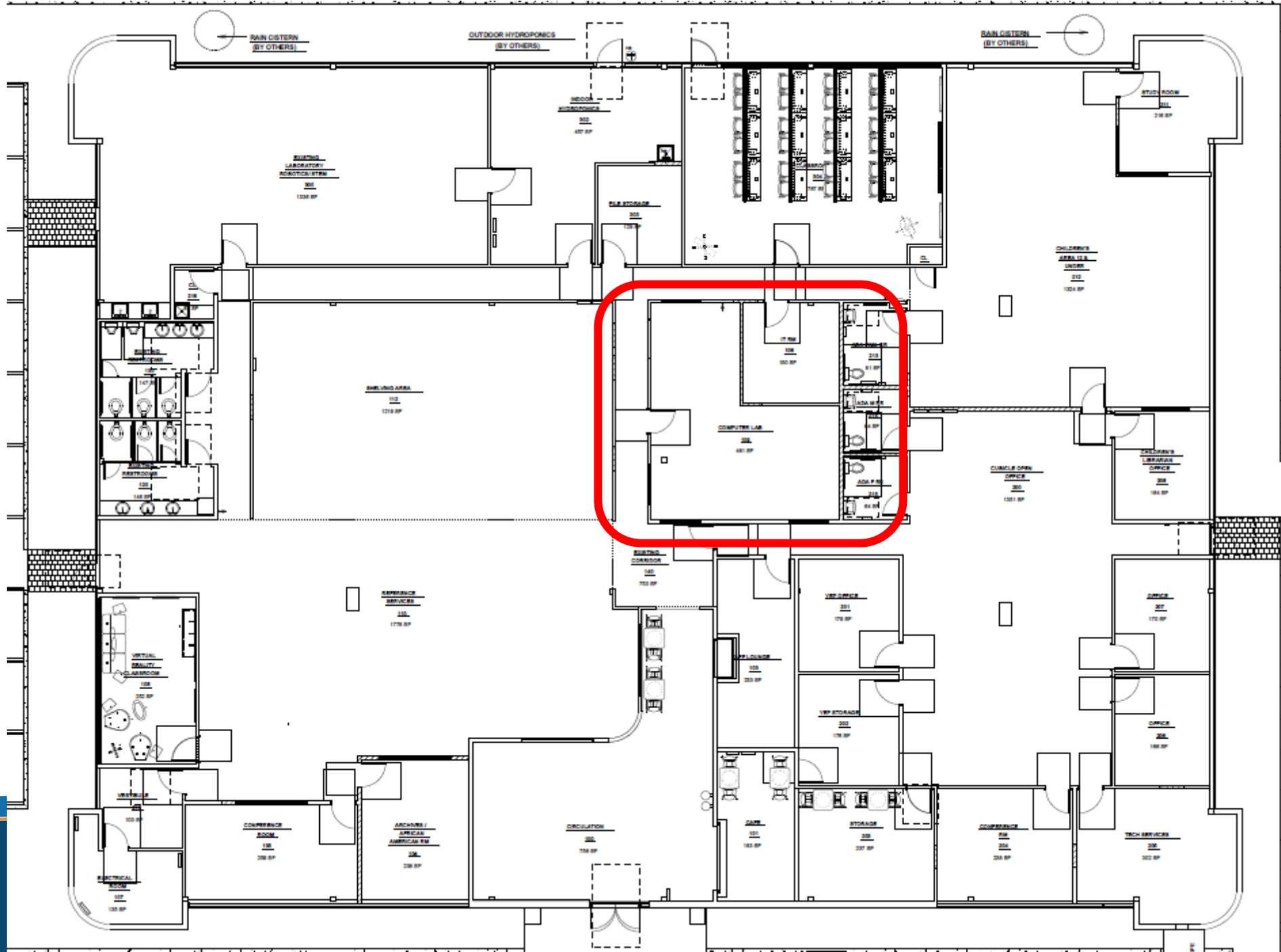


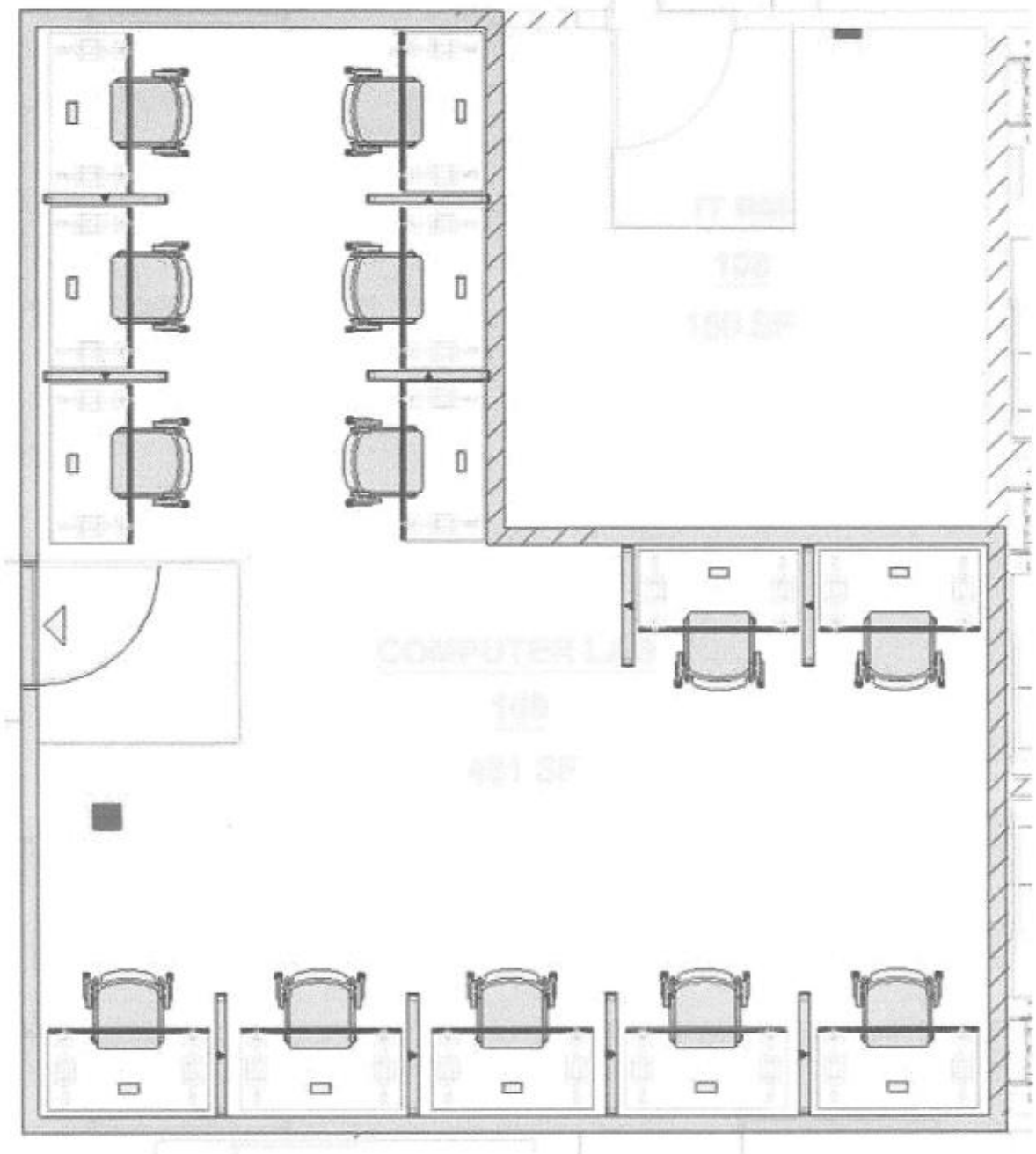
















ECC Testing Center

- GED TESTING
- RE-CERTIFICATION/CERTIFICATION TESTING





S	T	E	M
Science • Technology • Engineering • Math			
			







hydroponics gardening





If you are to grow to be a **STRONG TREE** ... then we have to treat the **ROOT FIRST!**





Questions?



Contact Information

EMERGING COMMUNITY CENTER

2191 N CONGRESS AVENUE

VALERIE GRIMSLEY

Phone 561-840-0135

VGRIMSLEY@RIVIERABEACH.ORG

