

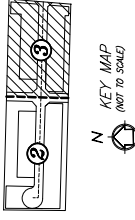




# RIVIERA COVE

A PORTION OF GOVERNMENT LOTS 1 AND 2, SECTION 28, TOWNSHIP 42 SOUTH,  
RANGE 43 EAST, THE CITY OF RIVIERA BEACH, PALM BEACH COUNTY, FLORIDA.

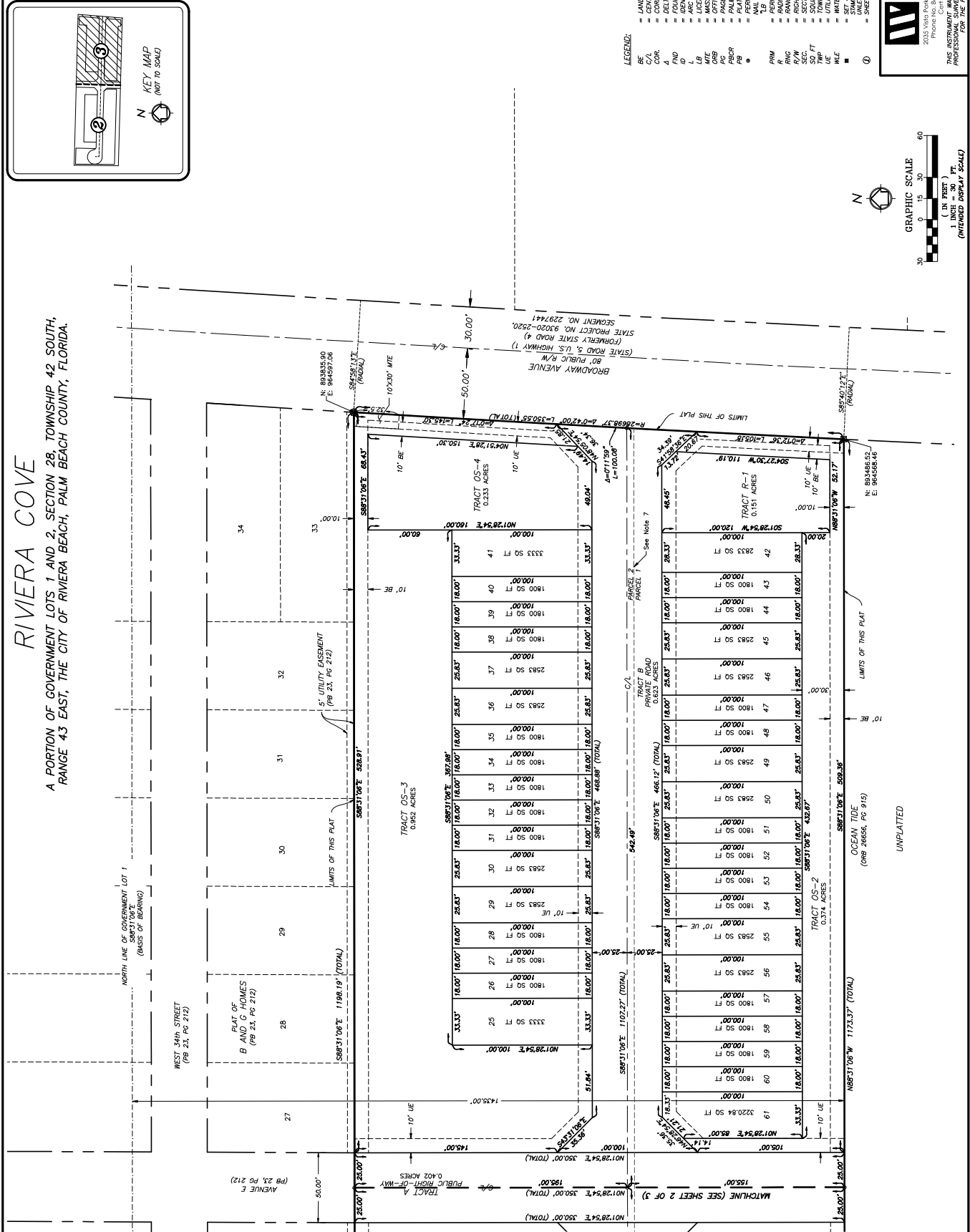
SHEET 3 OF 3 SHEETS



- LEGEND:
- BE LANDSCAPE BUFFER EASEMENT
  - C/L CENTER LINE
  - 4/4 DELTA/CENTRAL ANGLE (CURVE)
  - FND FOUND
  - ID IDENTIFICATION (CURVE)
  - LI LICENSED BUSINESS
  - M/E MISS TRANSIT EASEMENT
  - PCB PUBLIC RECORDS BOOK
  - PAZ PAGE
  - PROR PALM BEACH COUNTY RECORDS
  - PERM PERMANENT CONTROL POINT (PCP), SET
  - LB & TB LB & TB BRASS DISC STAMPED
  - RM RADIUS
  - R/RM RADIUS REFERENCE MONUMENT
  - R/RNG RADIUS
  - SEC SECTION
  - SW SW 1/4
  - 50 FT SQUARE FEET
  - 110 FT TWP
  - W/E WATER LINE EASEMENT
  - W/LE
  - ①

2033 Vista Parkway, West Palm Beach, FL 33411  
Phone: 561-990-1100  
Fax: 561-990-1101  
www.wvgi.com  
Cert No. 0791 - LB No. 7035

THIS INSTRUMENT WAS PREPARED BY JIM SULLIVAN, P.S.M.  
PROFESSIONAL SURVEYOR, LICENSE NO. 6889  
FOR THE FIRM, WATKINS GROUP, INC.



UNPLATTED

© 2024 WATKINS GROUP, INC. WATKINS GROUP, INC. IS A REGISTERED SERVICE MARK OF WATKINS GROUP, INC. ALL RIGHTS RESERVED.