

**Gentile Glas
Holloway
O'Mahoney
& Associates, Inc.**
Landscape Architects
Planners and
Environmental Consultants

1907 Commerce Lane
Suite 101
Jupiter, Florida 33458
561-575-9551
561-575-5260 FAX
www.2GHO.com

Landscape Development Plan
Crab Pot Site
Riviera Beach, Florida

Designed: DSS
Drawn: DSS
Approved: GGG/EOM/MTL
Date: 10-3-16
Job no. 15-1017
Revisions: 12-2-16
3-10-17

Scale

LC 0000177
Sheet Title:

Landscape
Development
Plan

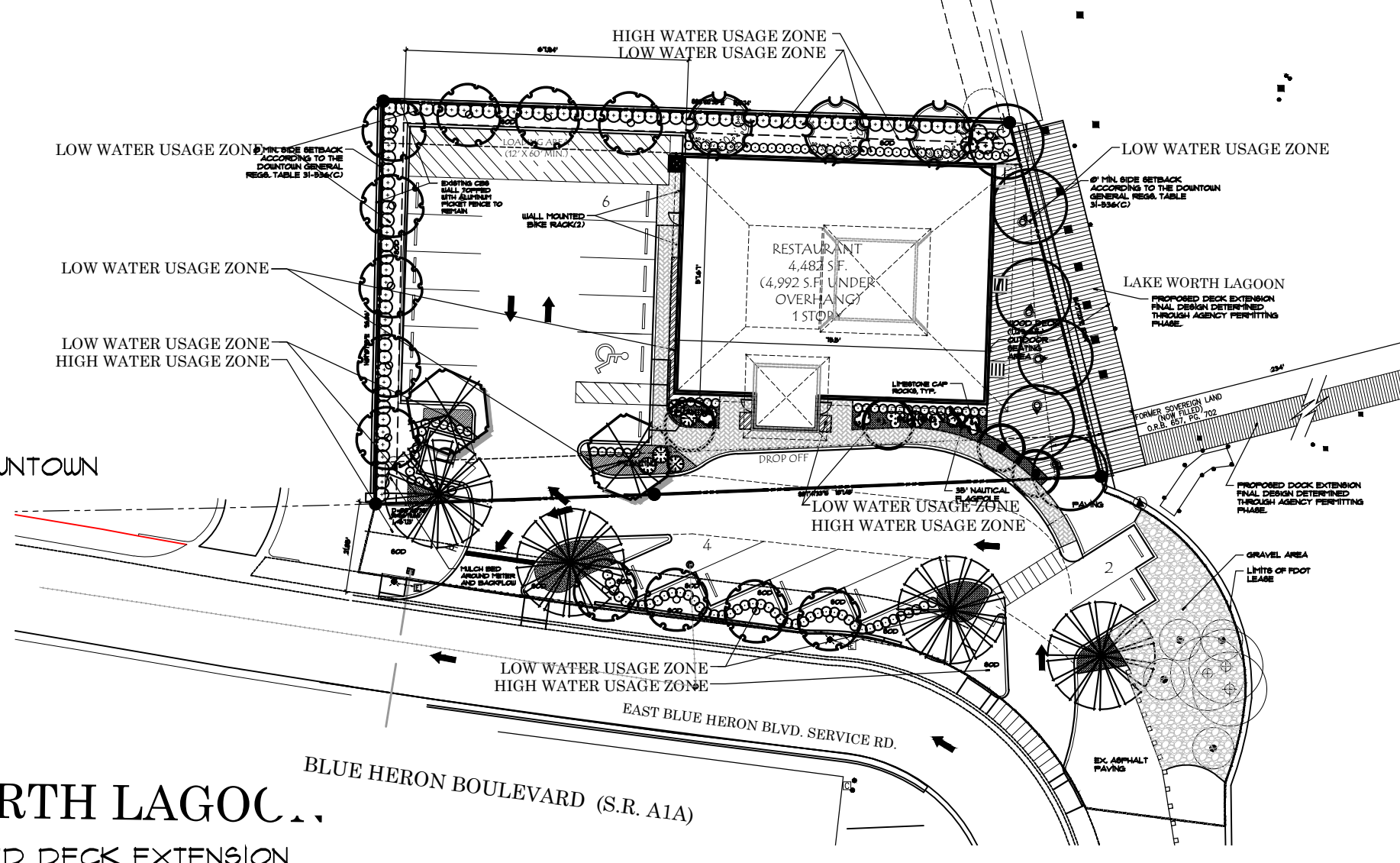
Scale: 1"=10'-0"

Sheet No.

LP-1

15-1017

Water Usage Zones:

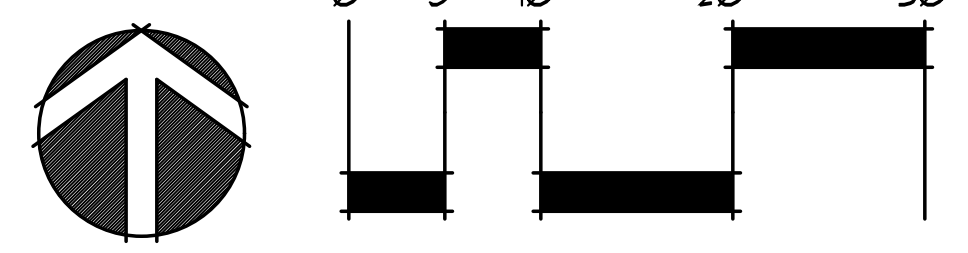
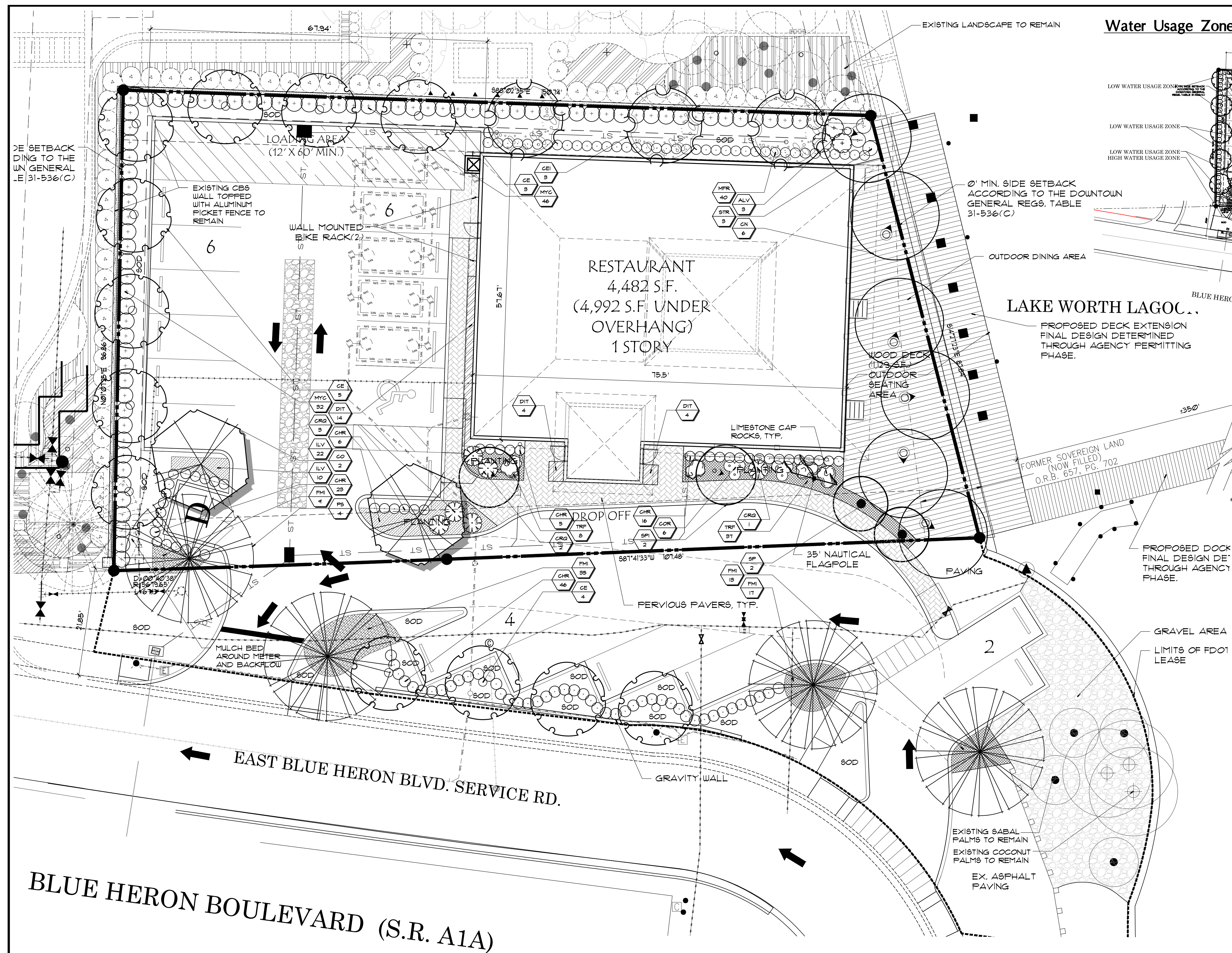


Landscape Data

TOTAL SITE AREA	0.34 ACRE (14,818.95 S.F.)
ZONING DISTRICT	DOWNTOWN GENERAL
LAND-USE CLASSIFICATION	DOWNTOWN MIXED-USE
TOTAL BUILDING AREA	4,486 SF.
RESTAURANT	
LANDSCAPE DATA	
TOTAL NUMBER OF TREES REQUIRED	28 TREES
TOTAL NUMBER OF TREES PROVIDED (SHADE AND PALM)	31 TREES
NUMBER OF SHADE TREES PROVIDED	17 TREES
NUMBER OF PALMS PROVIDED	14 PALMS
PERCENTAGE OF NATIVE TREE VEG. PROVIDED	68% (21/31)
PERCENTAGE OF NATIVE SHRUB VEG. PROVIDED	76% (291/383)
TOTAL PERCENTAGE OF NATIVE VEG. PROVIDED	75% (312/414)
PERCENTAGE OF DROUGHT TOLERANT TREES PROVIDED	100% (31/31)
PERCENTAGE OF DROUGHT TOLERANT SHRUBS PROVIDED	95% (365/383)
TOTAL PERCENTAGE OF DROUGHT TOLERANT PLANTS PROVIDED	96% (396/414)
MISC. DATA	
LANDSCAPE AREA REQUIRED (ON SITE)	2,963.8 S.F. (20%)
(20% OF TOTAL AREA)	
ADDITIONAL LANDSCAPE AREA REQUIRED (ON SITE)	0 SQ.FT.
(10 SQ. FT. FOR EACH PARKING SPACE SIZE REDUCTION) (0)	
ADDITIONAL LANDSCAPE AREA REQUIRED (NO ADDITIONAL ON SITE)	0 SQ.FT.
(10 SQ. FT. FOR EACH ADDITIONAL PARKING SPACE)	
TOTAL LANDSCAPE AREA REQUIRED	2,963.80 S.F. (20%)
TOTAL LANDSCAPE AREA PROVIDED	3,688.33 S.F. (25%)

XERISCAPE WATER EFFICIENT LANDSCAPING

DESIGN OPTIONS	POSSIBLE POINTS	PLAN POINTS
UTILIZATION OF MOISTURE SENSING CONTROLLER OTHER THAN SOIL-SENSING OR OVERSICR DEVICE	5	
PLAN SUBMITTED WITH LOW, MODERATE AND HIGH WATER USAGE ZONES INDICATED ON THE LANDSCAPE PLAN.	5	5
GRASSES: 25 - 50% OF THE GRASS AREAS ARE MADE UP OF DROUGHT-TOLERANT GRASS SPECIES FROM THE LIST.	5	
50% OR MORE OF THE GRASS AREAS ARE MADE UP OF DROUGHT-TOLERANT SPECIES FROM THE LIST.	10	
SHRUBS: 50% OF THE SHRUB AREAS ARE MADE UP OF DROUGHT-TOLERANT SPECIES FROM THE LIST.	5	
50% OF SITE OR MORE OF THE REQUIRED SHRUBS ARE MADE UP OF DROUGHT-TOLERANT SPECIES FROM THE LIST.	10	10
TREES: 25 - 50% OF THE GRASS AREAS ARE MADE UP OF DROUGHT-TOLERANT GRASS SPECIES FROM THE LIST.	5	
50% OF SITE OR MORE OF THE REQUIRED TREES ARE MADE UP OF DROUGHT-TOLERANT SPECIES FROM THE LIST.	10	10
EXTRA SHADE TREES IN VEHICLE USE AREAS: 25% MORE THAN THE REQUIRED SHADE TREES PLANTED IN THE VEHICULAR USE AREAS.	5	
50% MORE THAN THE REQUIRED SHADE TREES PLANTED IN THE VEHICULAR USE AREAS.	10	
SOD AREA LESS THAN 50% OF THE TOTAL LANDSCAPE AREA.	10	10
UTILIZATION OF COMPACTED MULCH BEDS AT LEAST THREE IN DEEP IN ALL PLANTED AREAS EXCEPT GRASS COVER.	10	10
TOTAL POINTS		45

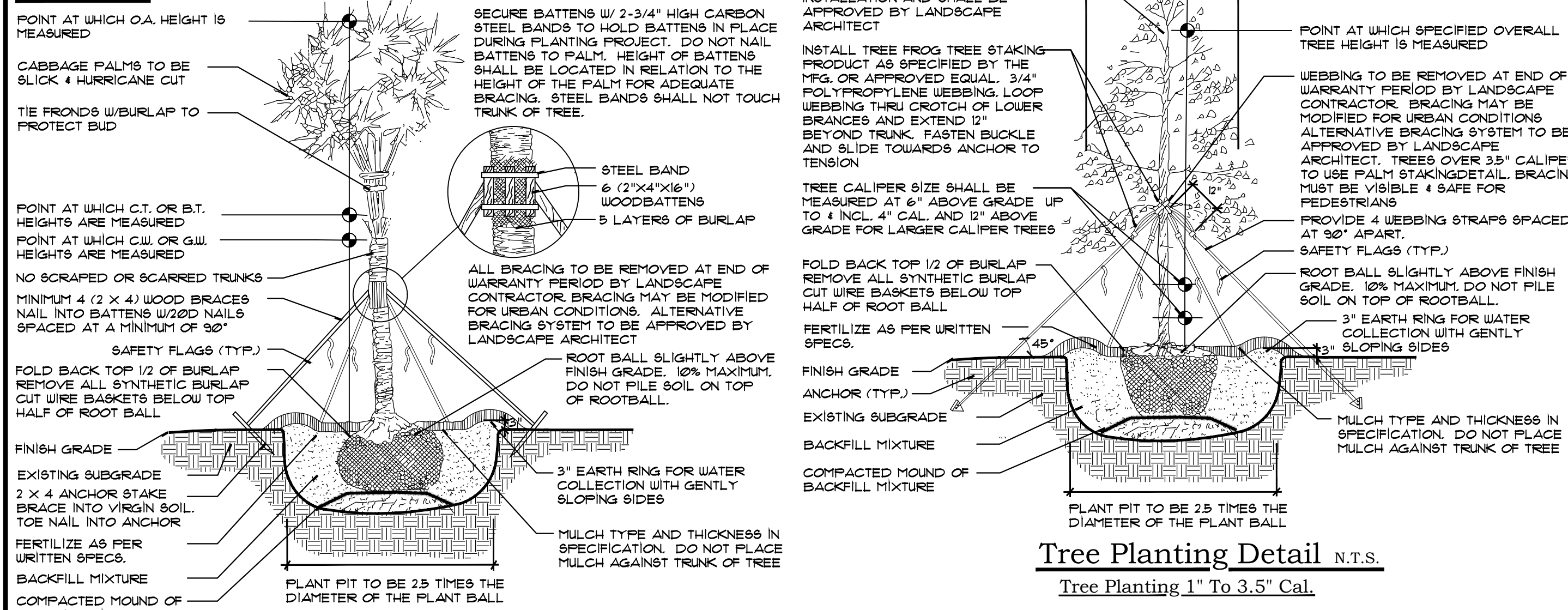


FILE N:\CRAB POT - 15-1017\DRAWINGS\326-0 FINAL SITE PLAN 15.DWG
PLOTTED: 3/20/17 AT 10:07AM BY: DSEVENSEN
SHEET: 1 OF 1

Plant List

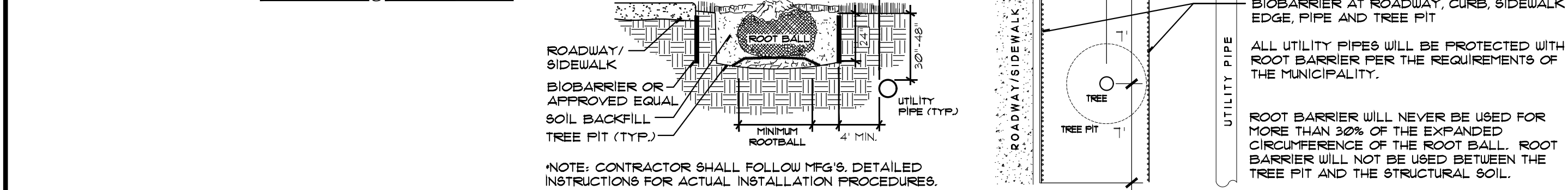
Table with columns: TREES & PALMS, SHRUBS & GROUNDCOVERS, KEY, QTY., BOTANICAL NAME, COMMON NAME, HEIGHT, WIDTH, CALIPER, SPACING, REMARKS.

Details



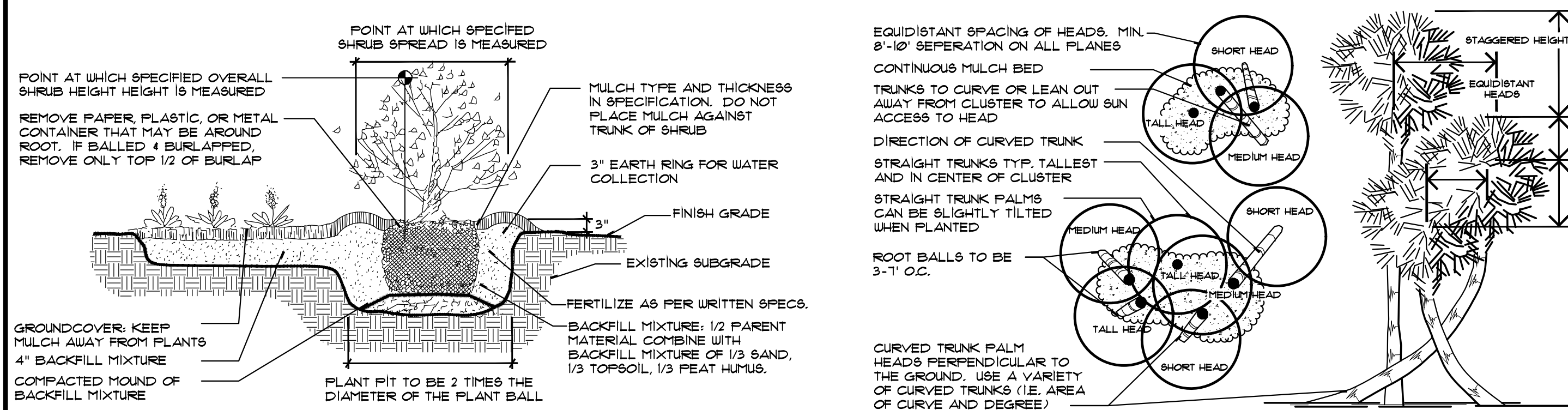
Palm Planting Detail N.T.S.

Tree Planting Over 3.5" Cal.



Tree Root Barrier Section N.T.S.

Tree Root Barrier Plan N.T.S.



Shrub & Ground Cover Planting Detail N.T.S.

Typical Cabbage Palm Layout N.T.S.

Specifications - Exterior Plants

1.4: QUALITY ASSURANCE: SOIL ANALYSIS SHALL BE CONDUCTED BY THE LANDSCAPE CONTACTOR PRIOR TO APPLICATION OF ANY SOIL AMENDMENTS...

1.5: DELIVERY, STORAGE AND HANDLING: PRUNING OF TREES SHALL BE DONE ON SITE AFTER PLANTING FOR DAMAGED LIMBS OR AS DIRECTED TO IMPROVE OVERALL PLANT APPEARANCE...

1.6: WARRANTY: WARRANTY ALL PLANT MATERIAL FOR A PERIOD OF ONE (1) YEAR FROM THE DATE OF FINAL ACCEPTANCE AGAINST DEATH AND UNHEALTHY CONDITION...

1.7: MAINTENANCE SERVICE: MAINTENANCE AND GENERAL CLEAN UP SHALL BE PERFORMED DAILY. MAINTENANCE SHALL INCLUDE BUT NOT BE LIMITED TO WATERING, WEEDING, CULTIVATING...

1.8: QUANTITIES, LOCATION AND SUBSTITUTIONS: THE QUANTITIES OF PLANT MATERIALS SHOWN ON PLANS SHALL TAKE PRECEDENCE OVER THE PLANT QUANTITIES ON THE PLANT LIST...

2.1: PLANT MATERIAL: PROVIDE SIZES AND SPECIFICATIONS OF PLANTS AS SHOWN ON PLANS OR LISTED ON PLANT LIST. ALL TREES, PALMS, SHRUBS, GROUND COVERS...

2.4: TOP SOIL: TOPSOIL SHALL BE FRIABLE FERTILE SOIL WITH REPRESENTATIVE CHARACTERISTICS OF AREA SOILS. IT SHOULD BE FREE OF HEAVY CLAY, SILT, STONE, EXCESS LIME...

2.5: INORGANIC SOIL AMENDMENTS: SAND SHALL BE CLEAN, SALT-FREE AND CONTAINING NO EXTRANEOUS MATTER. SOIL CONDITIONER SHALL BE AXIS 'REGULAR' CALCINATED DIATOMACEOUS EARTH...

Table with 2 columns: Property and Value. Rows include OPALINE SILICA (SiO2), POROSITY, ABSORPTION (ASTM F-726), PORE SIZE, pH, CEC.

2.6: ORGANIC SOIL AMENDMENTS: PEAT HUMUS SHALL BE DECOMPOSED PEAT WITH NO IDENTIFIABLE FIBERS OR IF AVAILABLE, MUCK MAY BE SUBSTITUTED AND SHALL BE FREE FROM STONES, EXCESSIVE PLANT ROOTS...

2.7: FERTILIZATION: PROVIDE FERTILIZER UNIFORM IN COMPOSITION, DRY, AND IN A FREE FLOWING CONDITION FOR APPLICATION BY SUITABLE EQUIPMENT...

2.8: MULCHES: MULCH TO BE APPLIED TO ALL PLANTING BEDS, 3" THICK MIN. FINE STRAW MULCH SHALL BE APPLIED ONLY TO THOSE AREAS AS INDICATED...

2.10: PLANTING SOIL MIX: BACKFILL MIXTURE: 1/2 PARENT SOIL, 1/2 MIXTURE (1/3 SAND, 1/3 TOPSOIL, 1/3 PEAT HUMUS).

3.1: PLANTING BED ESTABLISHMENT: PREPARATION: PRIOR TO THE INSTALLATION OF PLANTS, THE SITE SHALL BE FREE OF WEEDS, GRASS, SOD, DEBRIS, ROCKS OR OTHER MATERIAL MAKING THE SITE UNPLANTABLE...

3.2: PLANTING TREES: LAYOUT PLANTS ACCORDING TO LANDSCAPE PLANS. IF A CONFLICT ARISES AS TO THE LOCATION, SPACING OR OTHER CONFLICT, CONTACT THE LANDSCAPE ARCHITECT IMMEDIATELY...

3.2: PLANTING SHRUBS: EXCAVATE PITS TO TWO AND ONE-HALF (2 1/2) TIMES THE DIAMETER OF TREE BALL AND NOT LESS THAN 6" DEEPER. COMPACT A LAYER OF BACKFILL MIXTURE IN PIT TO LOCATE COLLAR OF PLANT PROPERLY...

3.4: PLANTING GROUNDCOVERS: LOOSEN SUBGRADE TO DEPTH OF 4" IN AREAS WHERE TOPSOIL HAS BEEN STRIPPED, AND SPREAD BACKFILL MIXTURE. SPACE PLANTS AS OTHERWISE INDICATED. DIG HOLES LARGE ENOUGH TO ALLOW FOR SPREADING OF ROOTS...

3.4: PLANTING GROUNDCOVERS: SOIL SHALL MEET AMERICAN SOD PRODUCE ASSOCIATION STANDARDS FOR NURSERY GROWN SOD FOR THICKNESS OF CUT, PAD SIZE, STRENGTH OF SECTIONS, MOISTURE CONTENT AND THATCH...

3.2: FERTILIZER: FERTILIZE TURF AREAS WITH TYPE 1 FERTILIZER, COMPLYING WITH THE STATE FERTILIZER LAWS. THE FERTILIZER SHALL BE CHEMICALLY DESIGNATED WITH 12-8-8. PROVIDE AT LEAST 50% OF THE PHOSPHORIC ACID FROM NORMAL SUPER PHOSPHATE...

3.1: LAWN PREPARATION: LOOSEN SUBGRADE TO DEPTH OF 4" AND GRADE WITH TOPSOIL PROVIDED ON SITE OR IMPORTED TO FINISH DESIGN ELEVATIONS. ROLL PREPARED LAWN SURFACE. WATER THOROUGHLY, BUT DO NOT CREATE MUDDY SOIL CONDITION.

3.2: SODDING: SOD TYPE SPECIFIED ON PLANT LIST SHALL BE MACHINE STRIPPED NOT MORE THAN 24 HOURS PRIOR TO LAYING. LAY SOD STRIPS WITH TIGHT JOINTS. DO NOT OVERLAP. STAGGER STRIPS TO OFFSET JOINTS IN ADJACENT COURSES...

3.2: SODDING: LANDSCAPE CERTIFICATION: THE LANDSCAPE ARCHITECT SHALL PROVIDE FINAL CERTIFICATION TO THE OWNER AND MUNICIPALITY THAT PLANTS ARE INSTALLED PER THE DESIGN PLAN, DETAILS AND SPECIFICATIONS...

General Notes: SOD TO BE ST. AUGUSTINE. ALL PLANTING AREAS SHALL RECEIVE 100% COVERAGE FROM A FULLY AUTOMATIC IRRIGATION SYSTEM EQUIPPED WITH A RAIN SENSOR.

UTILITIES: ABOVE AND BELOW GROUND UTILITIES SHALL BE VERIFIED AND LOCATED BY THE LANDSCAPE CONTRACTOR PRIOR TO COMMENCING WORK IN THE PROJECT AREA.

Gentile Glas Holloway O'Mahoney & Associates, Inc. Landscape Architects Planners Environmental Consultants. 1907 Commerce Lane Suite 101 Jupiter, Florida 33458

Crab Pot Site Riviera Beach, Florida. Landscape Specifications and Details.

Designed: DSS, Drawn: DSS, Approved: GGG/ROM/MTM, Date: 10-5-16, Job no.: 15-1077, Revisions: 12-2-18, 3-10-17.

811 logo, Know what's below. Call before you dig. LC 000117, Sheet Title: Landscape Specification Sheet, Not to Scale, Sheet No.: LP-2, 15-1017.