

**Gentle Glas
Holloway
O'Mahoney**
& Associates, Inc.
Landscape Architects
Planners
Environmental Consultants

1907 Commerce Lane
Suite 101
Jupiter, Florida 33458
561-575-9557
561-575-5260 FAX
www.2GHO.com

Final Landscape Plan
Moore Care Assisted Living
1291 West 32nd Street
City of Riviera Beach, Florida 33419

Designed: _____ DSS
Drawn: _____ DSS
Approved: _____ GGG/ROM/AMH
Date: _____ 1-26-18
Job no.: _____ 12-1104
Revisions: _____ 3-21-18
7-27-18 Staff Comments
8-16-18 Staff Comments

Seal

LC 000117
Sheet Title:
**Final
Landscape
Plan**
Scale: 1" = 10'-0"
Sheet No.
FLP-1
12-1104

Landscape Data

APPLICATION NUMBER(S) SP-13-04 & SE-13-01
GROSS SITE AREA 0.18 ACRE (7,769.72 S.F.)
ZONING DISTRICT RM-15 (MULTI-FAMILY RESIDENTIAL)
FUTURE LAND-USE MF-15 (MEDIUM DENSITY MULTIPLE FAMILY RESIDENTIAL)
SPECIAL EXCEPTION ADULT CONGREGATE LIVING FACILITY (ACLF)

TOTAL BUILDING AREA 3,215 SF.
ADULT CONGREGATE LIVING FACILITY

LANDSCAPE DATA

TOTAL NUMBER OF TREES REQUIRED	14 TREES
TOTAL NUMBER OF TREES PROVIDED (SHADE AND PALM)	14 TREES
NUMBER OF SHADE TREES PROVIDED (50% REQUIRED)	7 (50%=7)
NUMBER OF PALMS PROVIDED	7 PALMS
PERCENTAGE OF NATIVE TREE VEG. PROVIDED (INCLUDES EXISTING)	57% (8/14)
PERCENTAGE OF NATIVE SHRUB VEG. PROVIDED (NEW)	29% (28/98)
TOTAL PERCENTAGE OF NATIVE VEG. PROVIDED	32% (36/112)
PERCENTAGE OF DROUGHT TOLERANT TREES PROVIDED	100% (14/14)
PERCENTAGE OF DROUGHT TOLERANT SHRUBS PROVIDED	100% (98/98)
TOTAL PERCENTAGE OF DROUGHT TOLERANT PLANTS PROVIDED	100% (112/112)

MISC. DATA

LANDSCAPE AREA REQUIRED (20% OF TOTAL AREA)	1,553.94 S.F. (20%)
PLUS 30 S.F. PER PARKING SPACE WITH REDUCED BAY SIZE.	4 SPACES = 120 S.F.
	1,673.94 S.F. (22%)
TOTAL LANDSCAPE AREA PROVIDED	3,358.71 S.F. (43%)

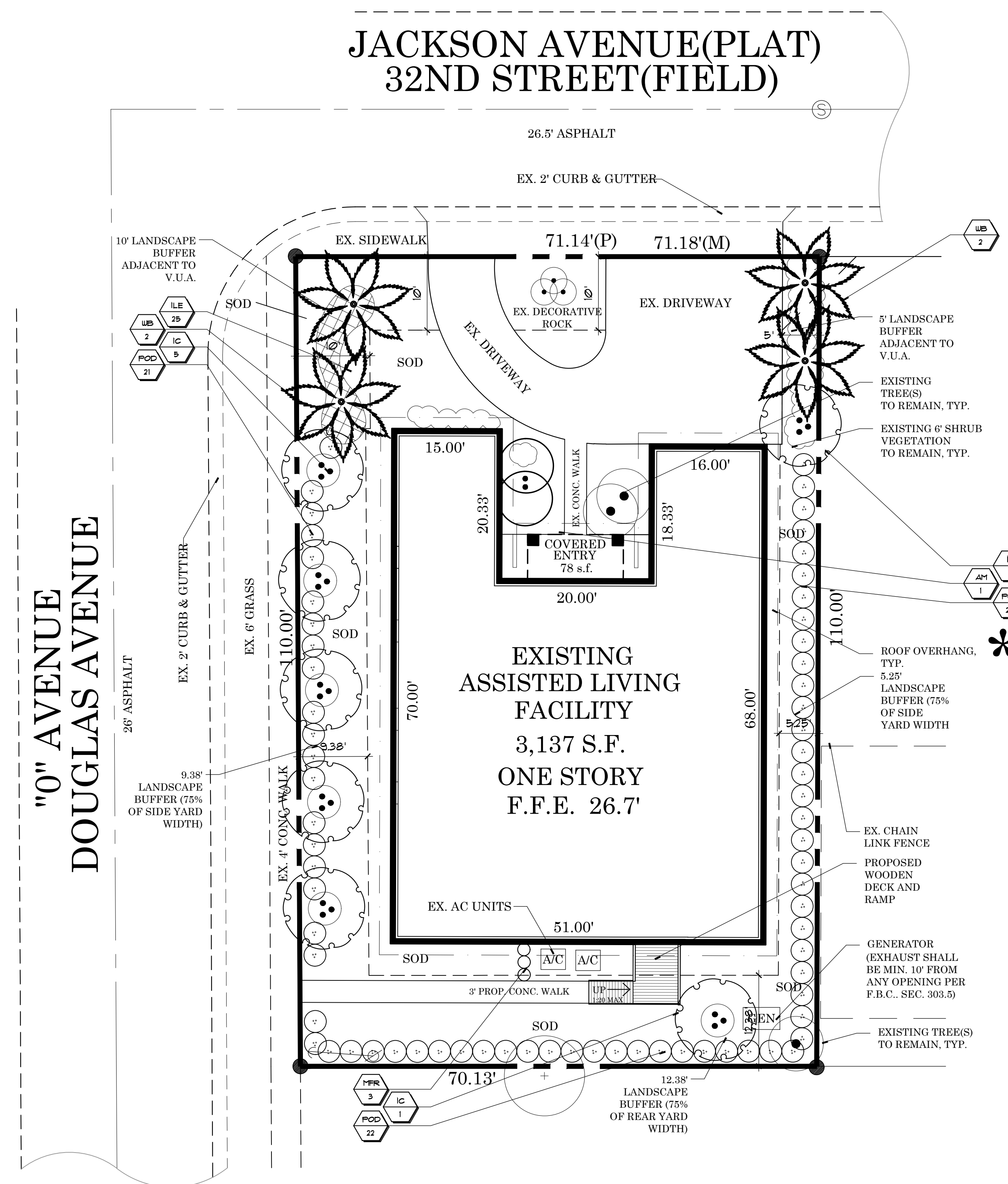
XERISCAPE WATER EFFICIENT LANDSCAPING

DESIGN OPTIONS	POSSIBLE POINTS	PLAN POINTS
UTILIZATION OF MOISTURE SENSING CONTROLLER OTHER THAN RAIN-SENSOR OR OVERRIDE DEVICE.	5	5
PLAN SUBMITTED WITH LOW, MODERATE AND HIGH WATER USAGE ZONES INDICATED ON THE LANDSCAPE PLAN.	5	5
GRASSES: 25 - 50% OF THE GRASS AREAS ARE MADE UP OF DROUGHT-TOLERANT GRASS SPECIES FROM THE LIST.	5	
50% OR MORE OF THE GRASS AREAS ARE MADE UP OF DROUGHT-TOLERANT SPECIES FROM THE LIST.	10	
SHRUBS: 25 - 50% OF THE SHRUB AREAS ARE MADE UP OF DROUGHT-TOLERANT SPECIES FROM THE LIST.	5	
50% OF SITE OR MORE OF THE REQUIRED SHRUBS ARE MADE UP OF DROUGHT-TOLERANT SPECIES FROM THE LIST.	10	10
TREES: 25 - 50% OF THE GRASS AREAS ARE MADE UP OF DROUGHT-TOLERANT GRASS SPECIES FROM THE LIST.	5	
50% OF SITE OR MORE OF THE REQUIRED TREES ARE MADE UP OF DROUGHT-TOLERANT SPECIES FROM THE LIST.	10	10
EXTRA SHADE TREES IN VEHICLE USE AREAS: 25% MORE THAN THE REQUIRED SHADE TREES PLANTED IN THE VEHICULAR USE AREAS.	5	
50% MORE THAN THE REQUIRED SHADE TREES PLANTED IN THE VEHICULAR USE AREAS.	10	10
SOD AREA LESS THAN 50% OF THE TOTAL LANDSCAPE AREA.	10	10
UTILIZATION OF COMPACTED MULCH BEDS AT LEAST THREE IN DEEP IN ALL PLANTED AREAS EXCEPT GROUND COVER.	10	10
TOTAL POINTS		50

Amendment Stamps

Zoning Stamps

JACKSON AVENUE(PLAT) 32ND STREET(FIELD)



✳ ALL SOD AREAS ARE HIGH WATER USAGE ZONES. TREES AND SHRUBS ARE LOW-MODERATE WATER USAGE ZONES.

