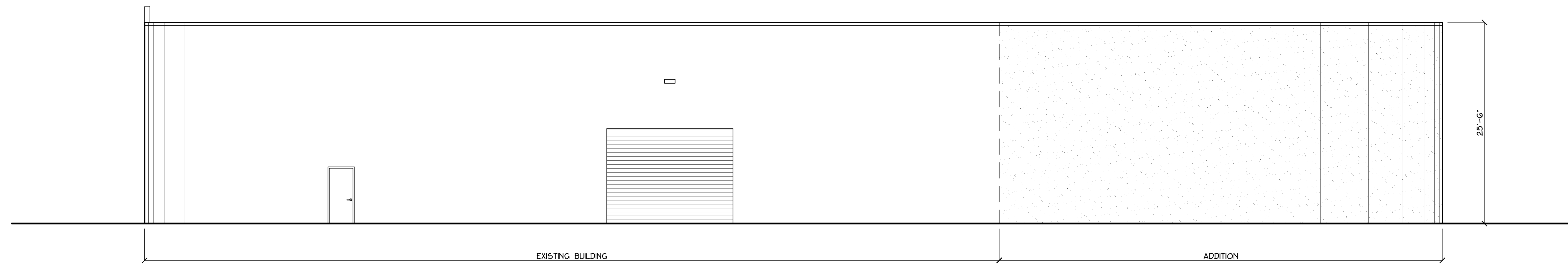
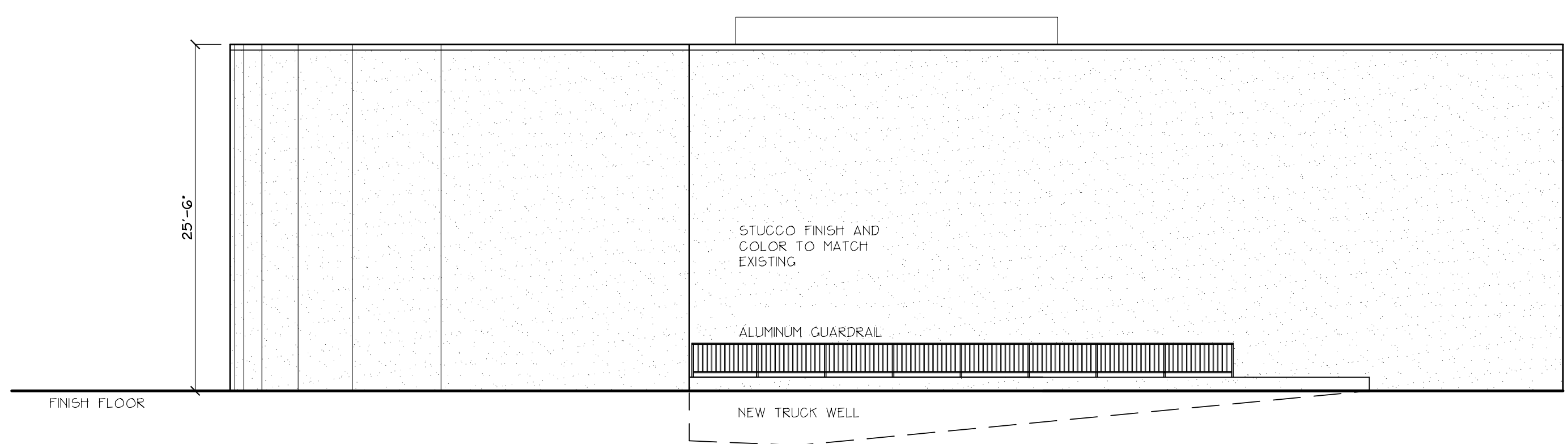


**WEST ELEVATION**  
1/8" = 1'-0"

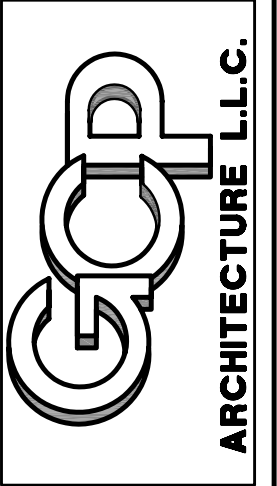


**EAST ELEVATION**  
1/8" = 1'-0"



**NORTH ELEVATION**  
1/8" = 1'-0"

601 HERITAGE DRIVE, SUITE 121  
JUPITER, FLORIDA 33458  
(561) 331-5036  
CERTIFICATE OF AUTHORIZATION #A426003279  
GUY C. FELLETER #11000



SEAL

**PROPOSED WHOLESALE/WAREHOUSE ADDITION FOR ABEL UNLIMITED INC.**  
2020 SEABIRD WAY, RIVIERA BEACH, FLORIDA  
ELEVATIONS  
1/8" = 1'-0"

DATE: 2/16/18  
DRAWN BY: GP  
PROJ. NO. 1721  
REVISED: