

Riviera Beach Community Redevelopment Agency



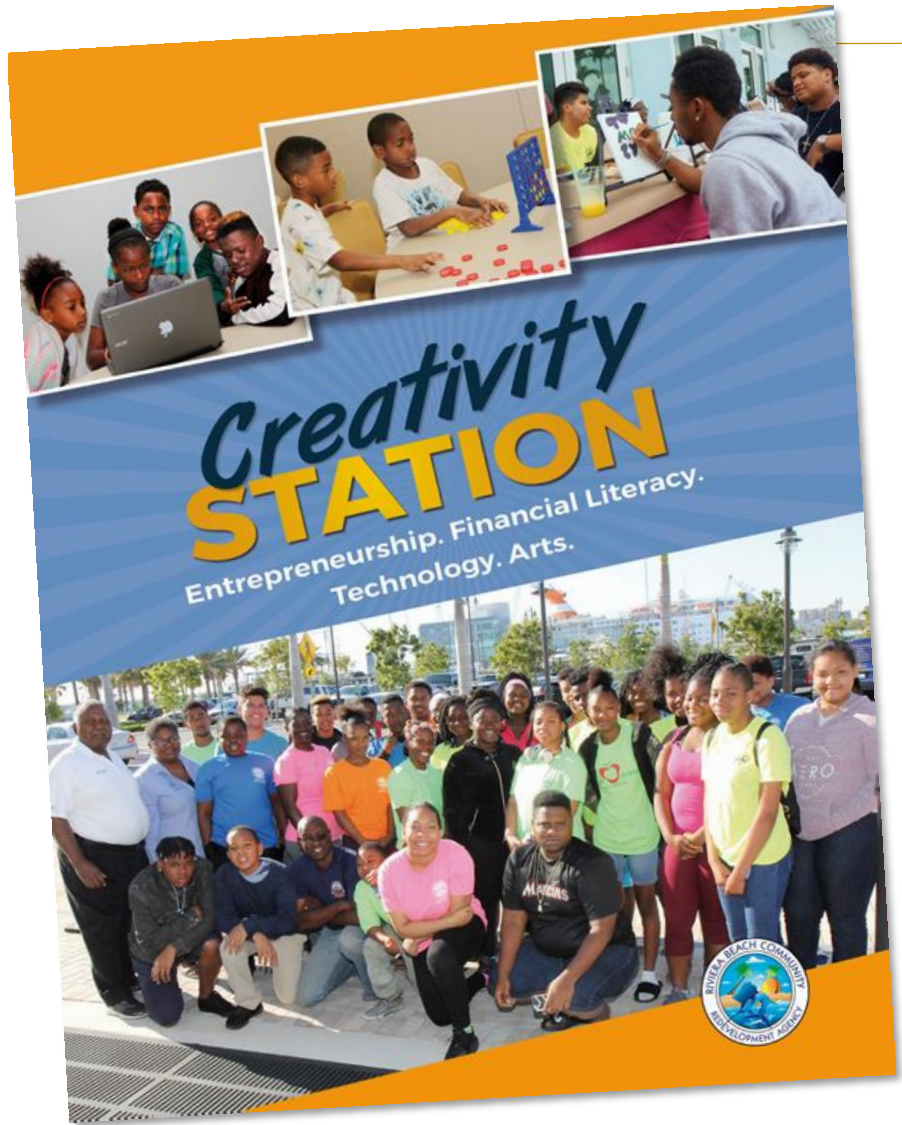
Neighborhood Services Update
May 23, 2018

Update

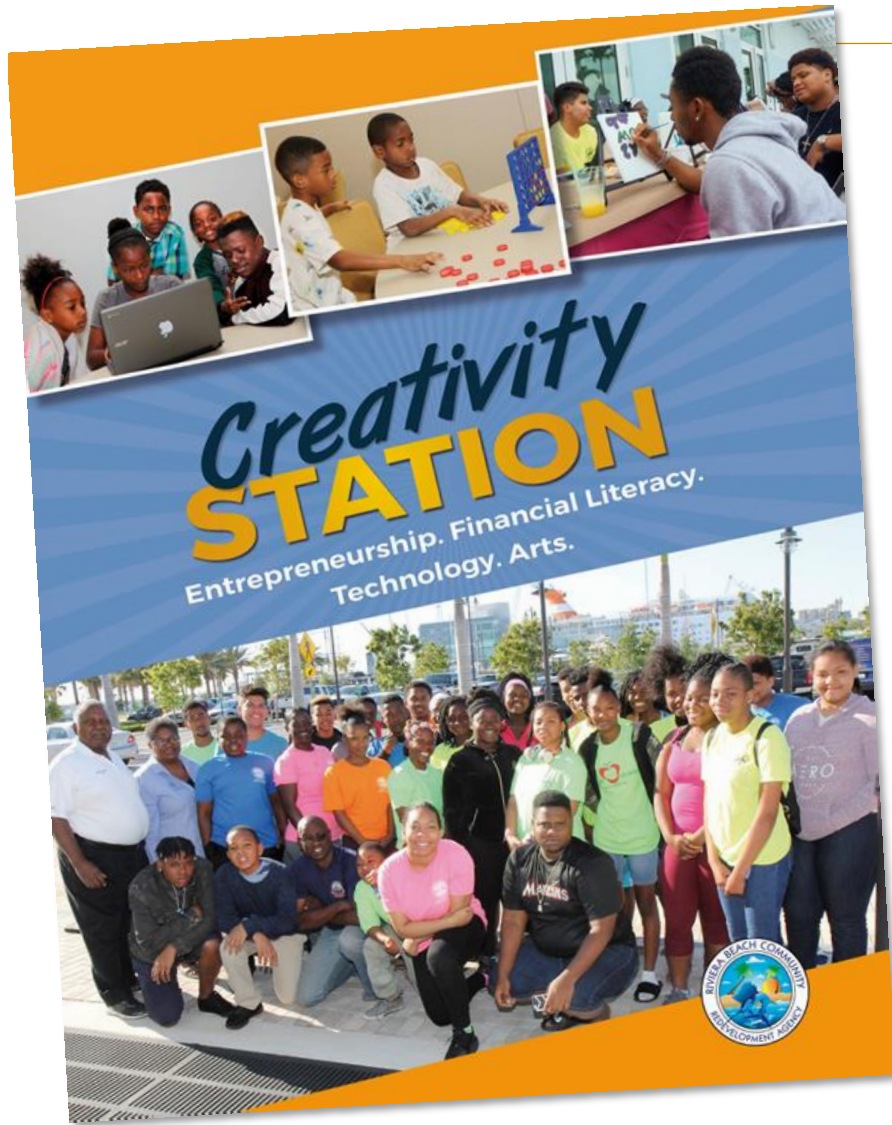
Creativity
STATION

Entrepreneurship. Financial Literacy.
Technology. Arts.

Creativity Station - STREAM³ Academy



Creativity Station |



Creativity Station Stats



- Stream³ - 47 Students enrolled YTD
- Projected Summer enrollment: 30
- Junior Achievement - 185 Students enrolled YTD
- Projected Summer enrollment: 175

Entrepreneurship.
Financial Literacy.
Technology.
Arts.

New Projects



BIKE & BUILD
PARTNERS WITH THE RIVIERA BEACH CDC
to Beautify and Enhance our Community

MONDAY, MAY 28TH | 8AM - 5PM
625 W. 3rd St. | Riviera Beach

For more info and to register, call 561-844-3408



Come Join Us!

as we celebrate the
GROUNDBREAKING AND DEDICATION CEREMONY
for the

**Willie "Bo" Davis
Flower and Meditation Garden**

THURSDAY, MAY 10TH | 9AM
Lindsey Davis Community Center
1550 W. 28th St., Riviera Beach
Light refreshments will be served.

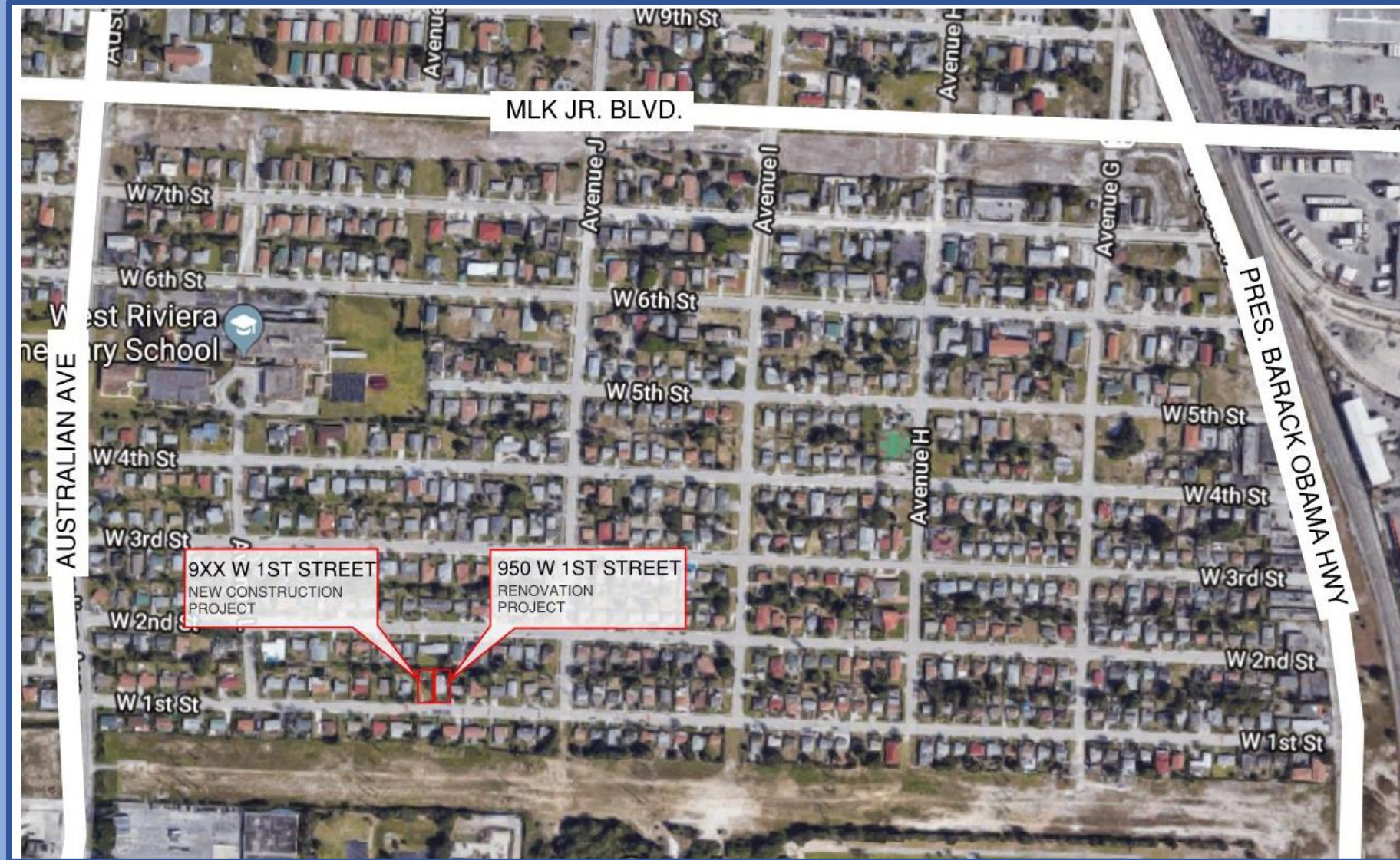
Please join your Riviera Beach friends, family and local dignitaries as we celebrate the newest addition to Riviera Beach's beautiful green spaces by preparing the site for the Willie "Bo" Davis Flower and Meditation Garden.

For information, please contact Sherley Desir
at 561-844-3408 or sdesir@rbcr.com.

Participating Sponsors:



Riviera Beach Renaissance – Infill Housing – Request for Bids Issued June 1st



950 W. 1st Street - Before



950 W. 1st Street - After



950 W. 1st Street



- Great Room



- View into Kitchen

950 W. 1st Street

- Three Bedrooms
- Two Bathrooms
- Great Room
- Washer/Dryer
- Central AC
- Security System
- New Plumbing, Electrical
- Impact Windows and Doors
- One Car Garage
- Front and Rear Lanai





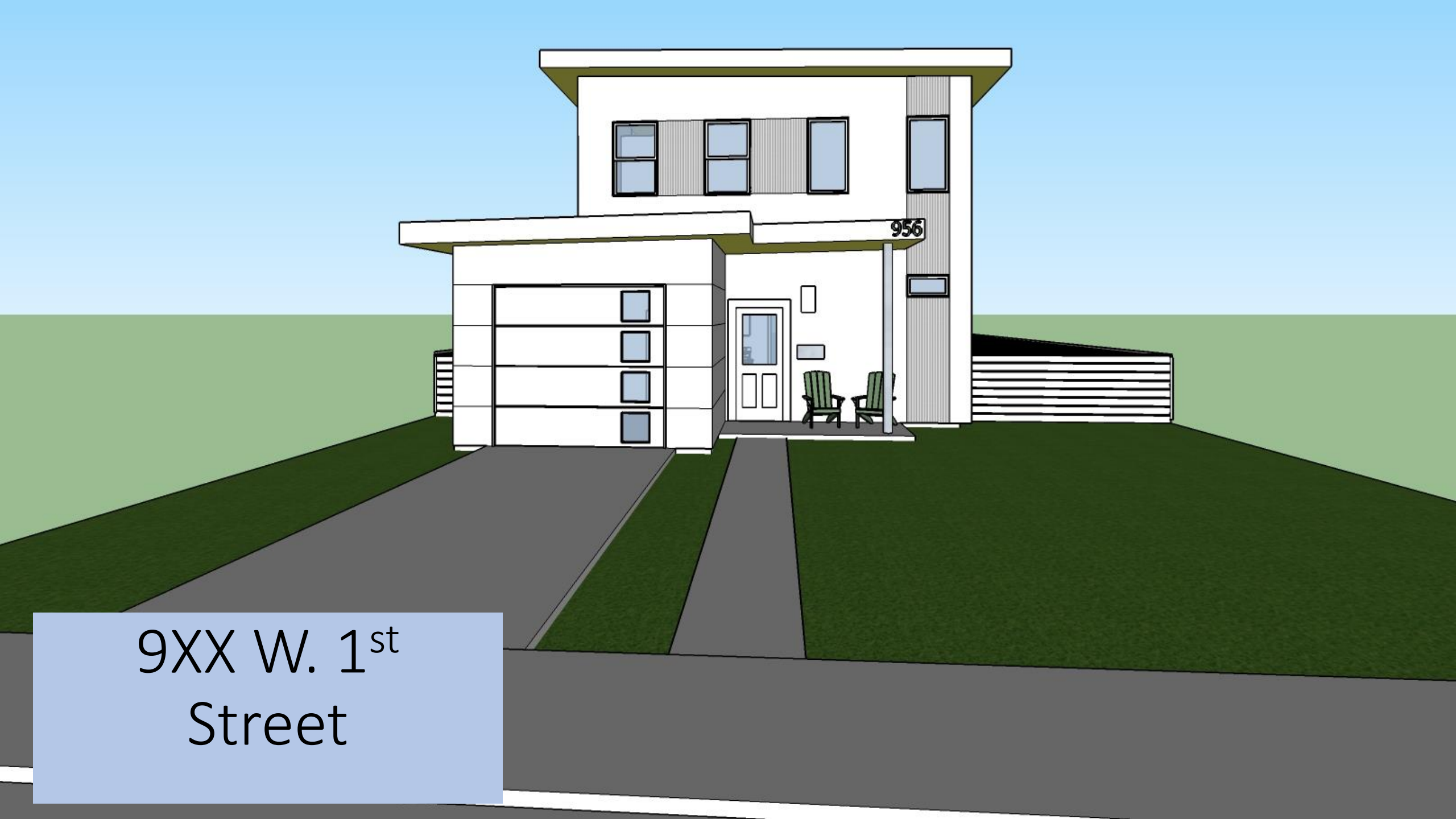






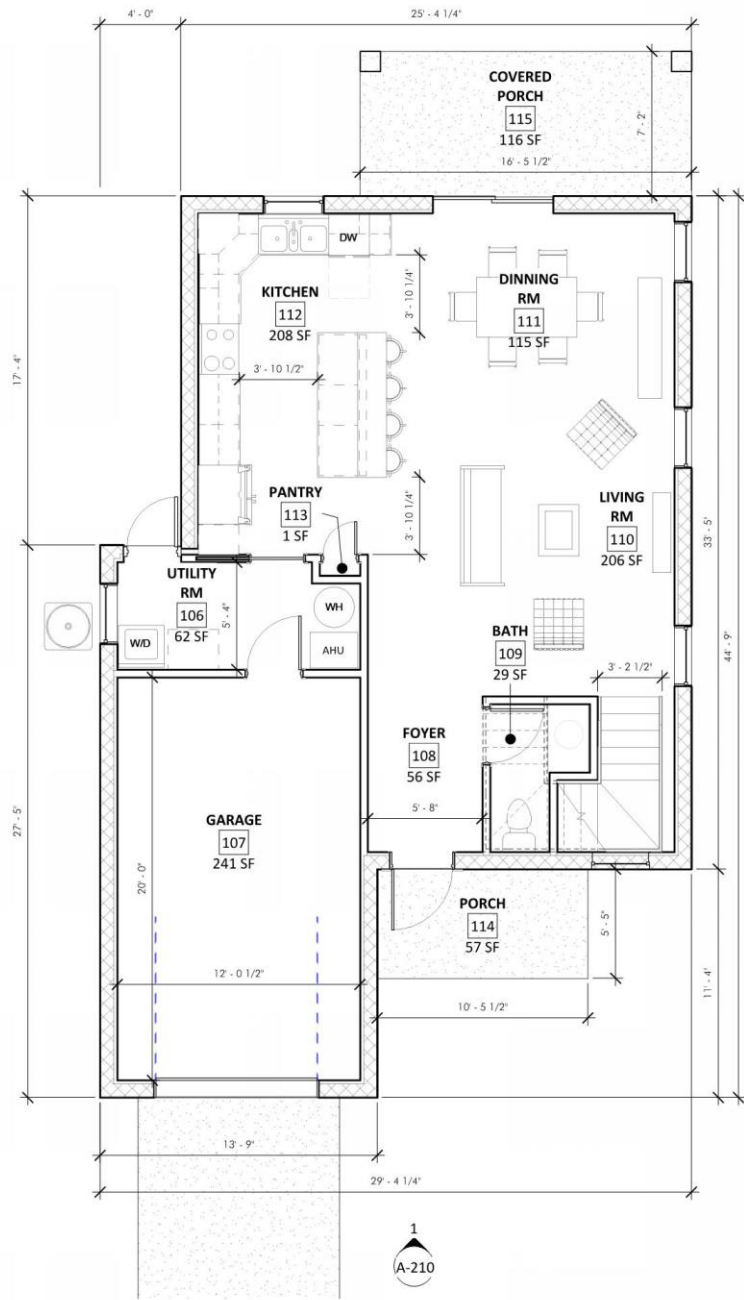
9XX W. 1st
Street



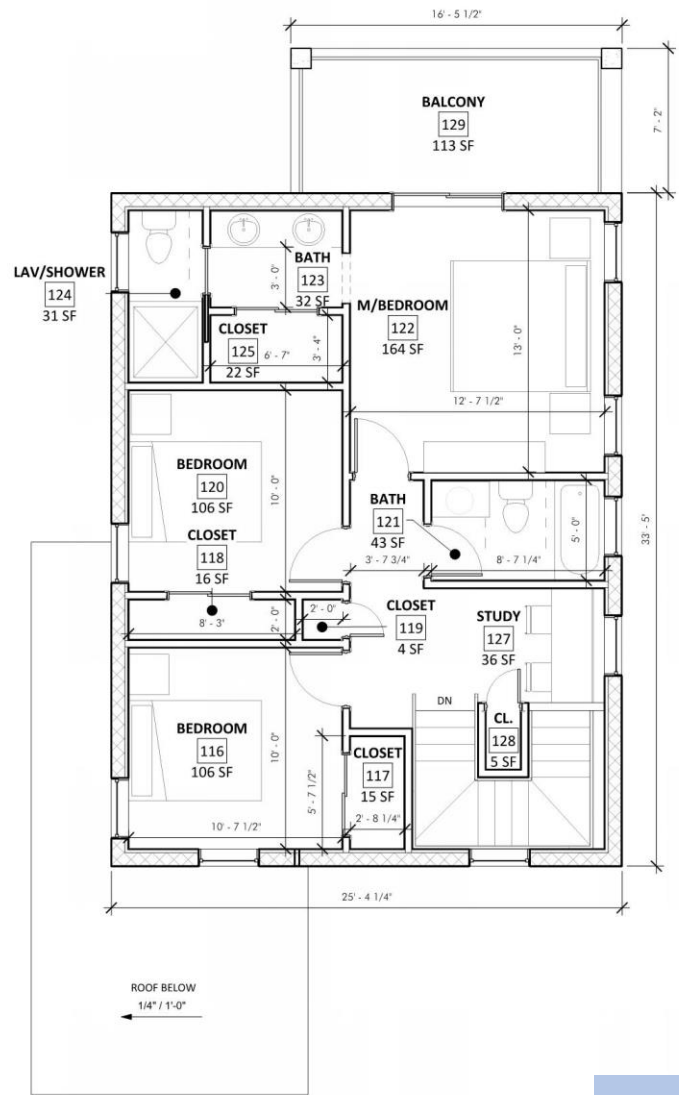


956

9XX W. 1st
Street



1 1ST FLOOR PLAN
A-100 1/4" = 1'-0"



2 2ND FLOOR
A-100 1/4" = 1'-0"

Infill Floor Plan – 4 Bedrooms, 2 ½ Baths, 1 Car Garage Prototype



Florida's Dynamic
Waterfront Community

