

AVENUE S

AVENUE R



Avenue S Model Block Project
Brooks Subdivision
 for the
 Northwest Riviera Beach CRC



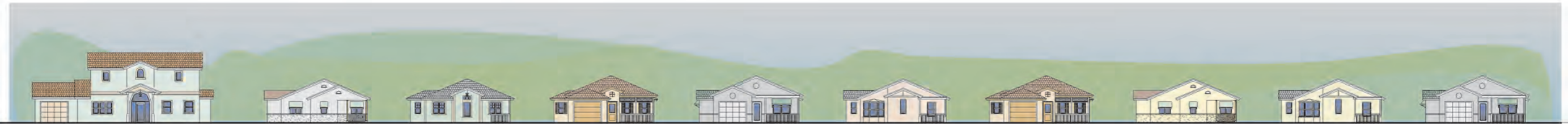
Colome' & Associates, Inc.
 ARCHITECTURE • PLANNING • INTERIORS
 Florida Registration: AA0000459
 315 26th Street, West Palm Beach, Florida 33407
 Phone: (561) 833-9147 Fax: (561) 833-9356



LOOKING NORTH



LOOKING EAST

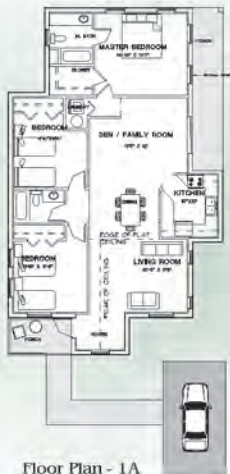


LOOKING SOUTH

Avenue S Model Block Project
Brooks Subdivision
for the
Northwest Riviera Beach CRC



Colome' & Associates, Inc.
ARCHITECTURE • PLANNING • INTERIORS
Florida Registration - AA 0003439
2115 25th Street, West Palm Beach, Florida 33407
Phone (561) 833-9197 Fax (561) 833-9256



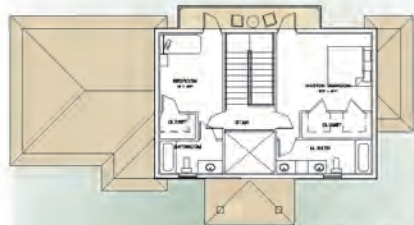
Floor Plan - 1A



Floor Plan - 1B



Floor Plan - 1C



Second Floor Plan - 2A

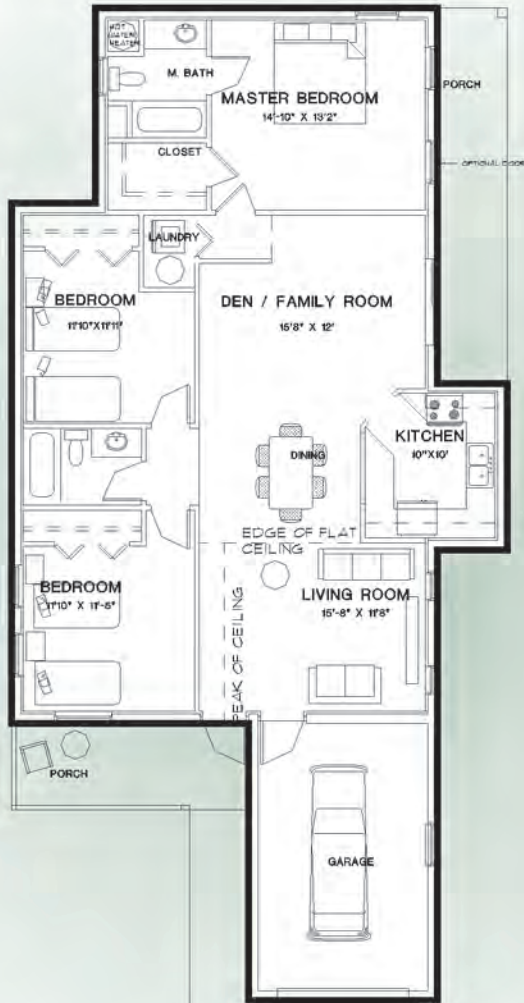


First Floor Plan - 2A

Avenue S Model Block Project
Brooks Subdivision
 for the
 Northwest Riviera Beach CRC



Clome & Associates, Inc.
 ARCHITECTURE • PLANNING • INTERIORS
 Route 104, Suite AA-00740
 217 9th Street, West Palm Beach, Florida 33411
 Phone: (561) 833-9147 Fax: (561) 833-0227



Front Elevation - 1B1

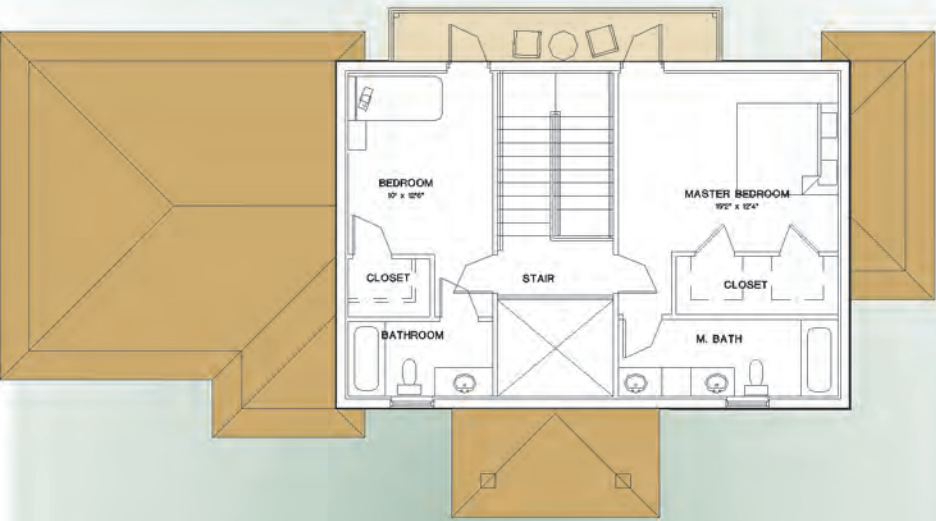


Front Elevation - 1B2



Colome & Associates, Inc.
 ARCHITECTURE PLANNING INTERIORS
 Florida Registration - AA 0009493
 318 9th Street - NW Palm Beach, Florida 33407
 Phone: (561) 955-5147 Fax: (561) 952-9826

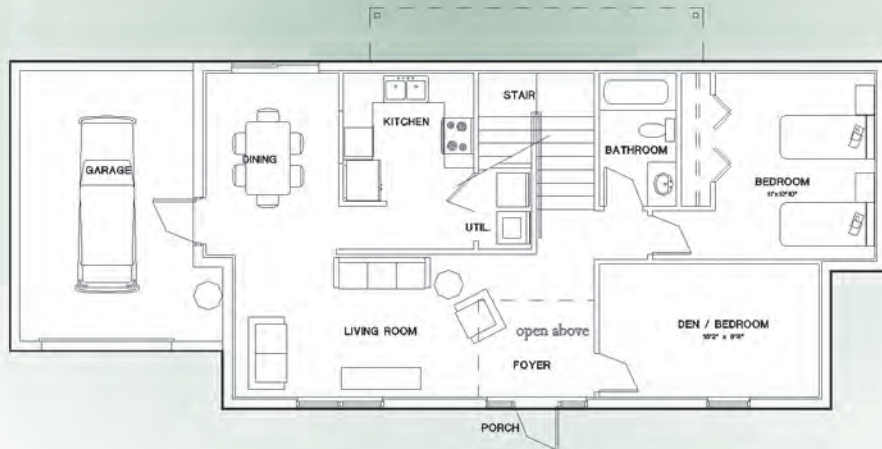
BROOKS SUBDIVISION
 Unit 1B1 and 1B2
 4/18/06



Second Floor Plan - 2A



Front Elevation - 2A1



First Floor Plan - 2A



Front Elevation - 2A1



Colome & Associates, Inc.
 ARCHITECTURE PLANNING INTERIORS
 Florida Registration - AA0009493
 212 South Green Way in Palm Beach Gardens, FL 33407
 Phone: (561) 929-9147 Fax: (561) 929-9254

BROOKS SUBDIVISION
 Unit 2A1 and 2A2

4/18/06