

COMPONENTS OF CONTRACT PLAN SET

ROADWAY PLANS  
SIGNING AND PAVEMENT MARKING PLANS  
SIGNALIZATION PLANS

A DETAILED INDEX APPEARS ON THE  
KEY SHEET OF EACH COMPONENT

INDEX OF ROADWAY PLANS

| SHEET NO. | SHEET DESCRIPTION                     |
|-----------|---------------------------------------|
| 1         | KEY SHEET                             |
| 2 - 4     | DRAINAGE MAP                          |
| 5         | REFERENCE POINTS                      |
| 6 - 11    | TYPICAL SECTIONS                      |
| 12        | GENERAL NOTES                         |
| 13        | SUMMARY OF QUANTITIES                 |
| 14 - 16   | SUMMARY OF DRAINAGE STRUCTURES        |
| 17 - 26   | PLAN AND PROFILE                      |
| 27 - 28   | FRONTAGE ROAD PROFILE                 |
| 29 - 31   | SIDE STREET PROFILES                  |
| 32        | INTERSECTION PROFILES                 |
| 33        | INTERSECTION DETAIL 1                 |
| 34        | INTERSECTION DETAIL 2                 |
| 35 - 41   | DRIVEWAY PROFILES                     |
| 42        | DRIVEWAY DETAILS                      |
| 43 - 59   | DRAINAGE STRUCTURES                   |
| 60 - 85   | CROSS SECTIONS                        |
| 86 - 87   | DETENTION AREA DETAILS                |
| 88 - 90   | DETENTION AREA CROSS SECTIONS         |
| 91        | STORM WATER POLLUTION PREVENTION PLAN |
| 92        | REPORT OF CORE BORINGS                |
| 93        | BORINGS LOCATION PLAN                 |
| 94        | SOILS PROFILE                         |

# COUNTY OF PALM BEACH STATE OF FLORIDA

BOARD OF COUNTY COMMISSIONERS  
PROJECT NO. 2003514

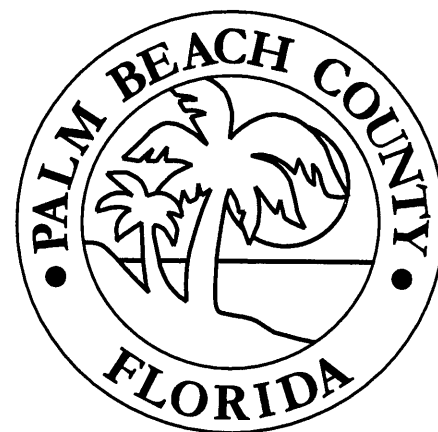
## SILVER BEACH ROAD EAST OF CONGRESS AVENUE TO EAST OF OLD DIXIE HIGHWAY

HAL R. VALECHE  
DISTRICT 1

PAULETTE BURDICK  
DISTRICT 2

STEVEN L. ABRAMS  
DISTRICT 4

JESS R. SANTAMARIA  
DISTRICT 6



SHELLEY VANA  
DISTRICT 3

MARY LOU BERGER  
DISTRICT 5

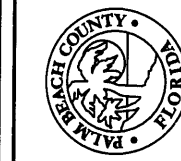
PRISCILLA A. TAYLOR  
DISTRICT 7

PLANS PREPARED BY:



- ENGINEERS
- PLANNERS
- SURVEYORS

METRIC ENGINEERING, INC.  
13940 S.W. 136th STREET, SUITE 200  
MIAMI, FLORIDA 33186  
TEL. (305) 235-5098  
FAX. (305) 251-5894  
VENDOR # F-59-1685550  
CERTIFICATE OF AUTHORIZATION No. EB-0002294  
CONTRACT No. : C-4697



PALM BEACH COUNTY  
ENGINEERING AND PUBLIC WORKS  
ROADWAY PRODUCTION  
2900 N. JOG ROAD  
WEST PALM BEACH, FLORIDA 33411-3745

| NO. | REVISION | DATE | FIELD BOOK NO. |
|-----|----------|------|----------------|
|     |          |      |                |

MANUEL A. SAULEDA  
P.E. LICENSE 45988  
METRIC ENGINEERING, INC.  
13940 SW 136th STREET, SUITE 200  
MIAMI, FLORIDA 33186  
CERTIFICATE OF AUTHORIZATION No. 2004

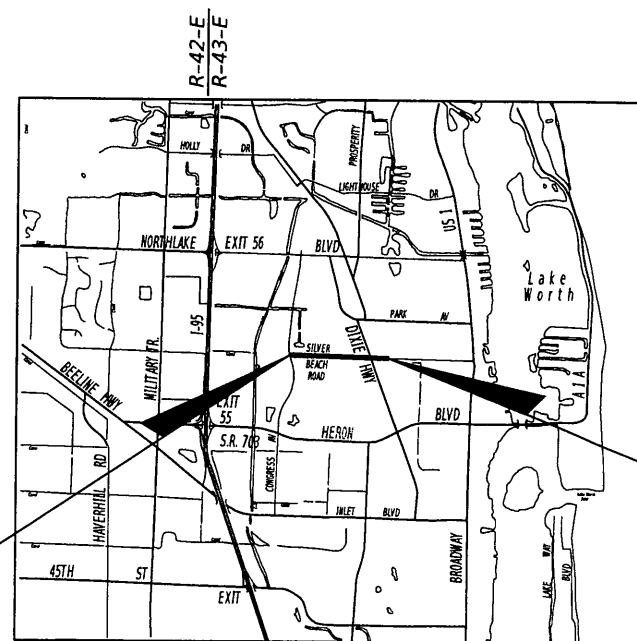
PROJECT LENGTH IS BASED ON % OF CONSTRUCTION

| LENGTH OF PROJECT       |             |       |
|-------------------------|-------------|-------|
|                         | LINEAR FEET | MILES |
| ROADWAY                 | 5,314.31    | 1.006 |
| BRIDGES                 | 0           | 0     |
| NET LENGTH OF PROJECT   | 5,314.31    | 1.006 |
| EXCEPTIONS              | 0           | 0     |
| GROSS LENGTH OF PROJECT | 5,314.31    | 1.006 |

96% SUBMITTAL  
OCTOBER 2015

NOTE: THE SCALE OF THESE PLANS MAY  
HAVE CHANGED DUE TO REPRODUCTION.

BEGIN PROJECT  
STA. 100+65.69



END PROJECT  
STA. 153+80.00

LOCATION MAP  
N.T.S.

GOVERNING STANDARDS AND SPECIFICATIONS:  
FLORIDA DEPARTMENT OF TRANSPORTATION,  
DESIGN STANDARDS DATED 2015, AND SUPPLEMENTS  
GOVERNING SPECIFICATIONS ARE CONTAINED IN THE  
THERE TO CONTRACT DOCUMENTS FOR THIS PROJECT.

ENGINEERING CERTIFICATION

I HEREBY CERTIFY THAT THE ATTACHED PLANS AND  
DESIGN ARE IN SUBSTANTIAL COMPLIANCE WITH THE  
DESIGN STANDARDS AND CRITERIA IN EFFECT ON THIS  
DATE FOR THE PALM BEACH COUNTY ENGINEERING  
DEPARTMENT AND THE STATE OF FLORIDA DEPARTMENT OF  
TRANSPORTATION

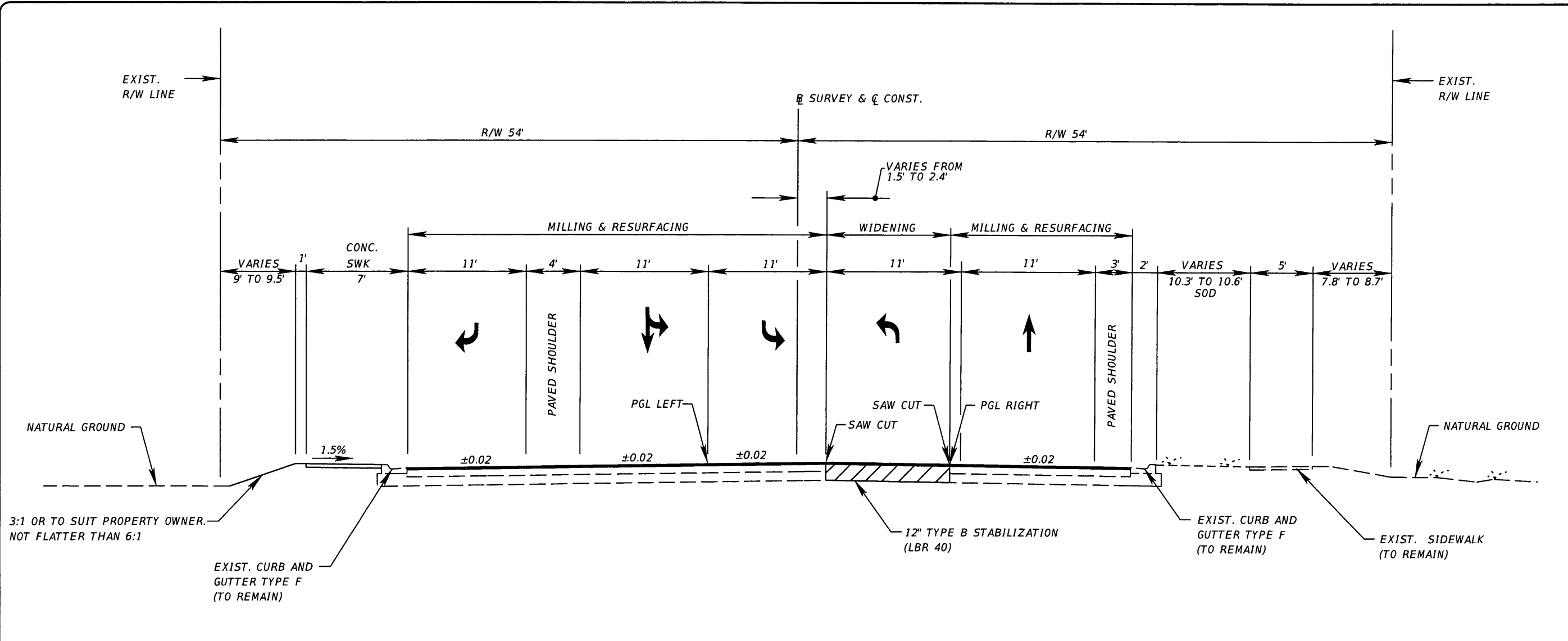
DATE

METRIC ENGINEERING, INC.

MANUEL A. SAULEDA  
PROFESSIONAL ENGINEER  
NO. 45988, STATE OF FLORIDA  
METRIC ENGINEERING, INC.  
13940 S.W. 136th STREET, SUITE 200  
MIAMI, FLORIDA 33186  
TEL. (305) 235-5098  
FAX. (305) 251-5894

SILVER BEACH RD.  
DESIGN FILE NAME  
DRAWING NO.  
KEY SHEET

SHEET: 1  
OF:  
PROJECT NO. 2003514



**SILVER BEACH ROAD**  
 STA. 100+80.00 TO STA. 106+21.71  
 DESIGN SPEED 35 MPH

**WIDENING**

OPTIONAL BASE GROUP 13  
 1 1/2" TYPE SP STRUCTURAL COURSE (T.L.C.)  
 1" FRICTION COURSE FC-9.5


**MILLING AND RESURFACING**

MILL 1" (AVG. DEPTH)  
 RESURFACE WITH 1" FRICTION COURSE FC-9.5

**TYPICAL SECTION NOTES:**

- NONE OF THE EXISTING LIMEROCK BASE REMOVED IS TO BE USED IN THE CONSTRUCTION OF THE NEW LIMEROCK BASE.
- IN AREAS OF WIDENING THE FOLLOWING PAVEMENT ALTERNATE MAY BE SUBSTITUTED AT NO ADDITIONAL COST TO PALM BEACH COUNTY:  
 2 1/2" TYPE S-1 & S-III ASPHALTIC CONC. (W/TACK COAT)  
 8" ASPHALTIC BASE COURSE (ABC-3) (W/TACK COAT)  
 12" COMPACTED SUBGRADE (100% MAX DENSITY)
- 4" THICK ABC-3 CURB PAD SHALL BE CONSTRUCTED BENEATH THE PROPOSED TYPE "F" CURB AND GUTTER)
- ACTUAL WIDTH OF BASE WIDENING MAY VARY DUE TO ACTUAL EXISTING PAVEMENT WIDTH. CONTRACTOR MAY ELECT TO PLACE UNIFORM WIDTH BASE WIDENING STRIP AT NO ADDITIONAL COST.

PALM BEACH COUNTY  
 ENGINEERING AND PUBLIC WORKS  
**ROADWAY PRODUCTION**  
 2800 N. JOG ROAD  
 WEST PALM BEACH, FLORIDA 33411-2745



|               |                |
|---------------|----------------|
| DATE          |                |
| BY            |                |
| REVISION      |                |
| NO.           |                |
| SCALE: N.T.S. | FIELD BOOK NO. |
| APPROVED:     |                |
| DRAWN:        |                |
| CHECKED:      |                |
| DATE:         |                |

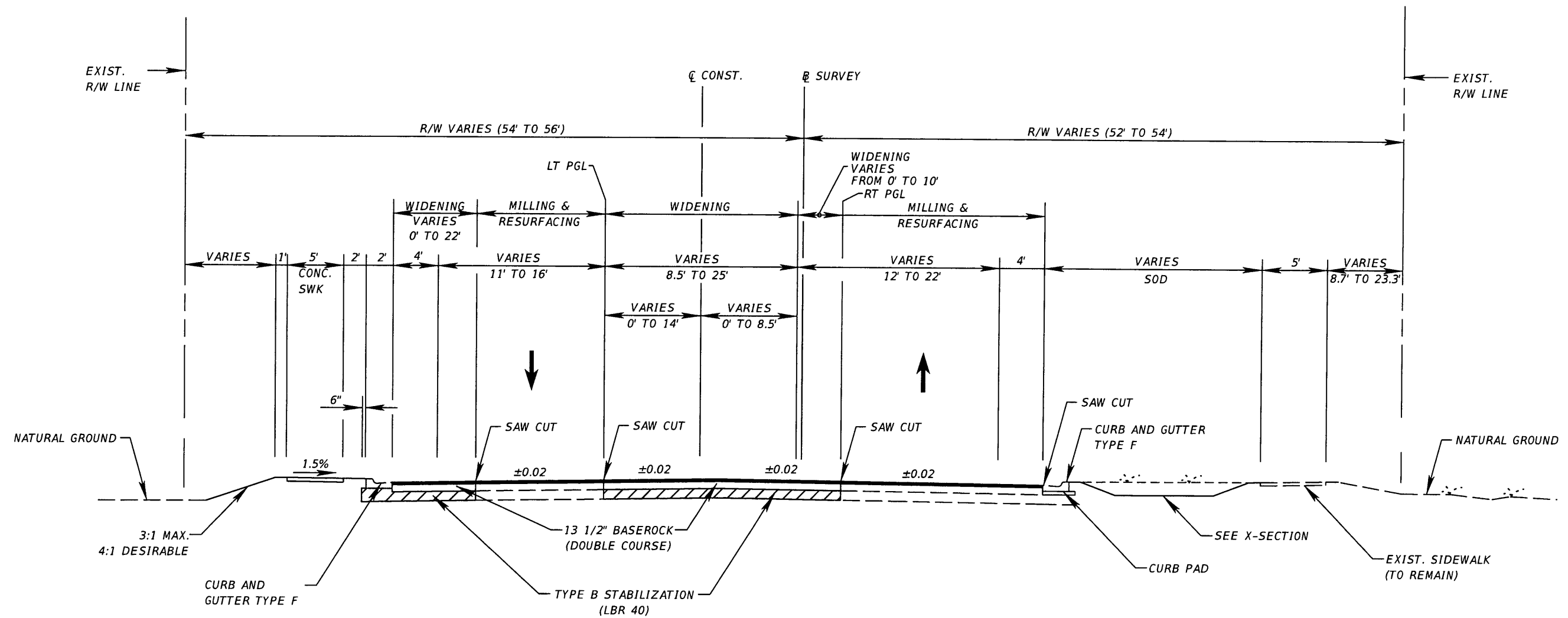
MANUEL A. SALLERA  
 P.E. LICENSE #55888



METRIC ENGINEERING, INC.  
 13940 N.W. 11TH AVENUE, SUITE 200  
 MIAMI, FLORIDA 33186  
 CERTIFICATE OF AUTHORIZATION No. 2294

**SILVER BEACH RD.**  
 DESIGN FILE NAME  
**TYPICAL SECTIONS**  
 DRAWING NO.

SHEET: 6  
 OF:  
 PROJECT NO. 2003514



**SILVER BEACH ROAD**  
**STA. 106+21.71 TO STA. 111+00.00**  
**DESIGN SPEED 35 MPH**

**WIDENING**

OPTIONAL BASE GROUP 13  
 1 1/2" TYPE SP STRUCTURAL COURSE (T.L.C.)  
 1" FRICTION COURSE FC-9.5

**MILLING AND RESURFACING**

MILL 1" (AVG. DEPTH)  
 OVERBUILD WITH TYPE 5 ASPH. CONC.  
 RESURFACE WITH 1" FRICTION COURSE FC-9.5

**TYPICAL SECTION NOTES:**

1. NONE OF THE EXISTING LIMEROCK BASE REMOVED IS TO BE USED IN THE CONSTRUCTION OF THE NEW LIMEROCK BASE.
2. IN AREAS OF WIDENING THE FOLLOWING PAVEMENT ALTERNATE MAY BE SUBSTITUTED AT NO ADDITIONAL COST TO PALM BEACH COUNTY:  
 2 1/2" TYPE S-1 & S-III ASPHALTIC CONC. (W/TACK COAT)  
 8" ASPHALTIC BASE COURSE (ABC-3) (W/TACK COAT)  
 12" COMPACTED SUBGRADE (100% MAX DENSITY)
3. IF ALTERNATE "B" IS CONSTRUCTED A 2" THICK ABC-3 CURB PAD SHALL BE CONSTRUCTED BENEATH THE PROPOSED TYPE "F" CURB AND GUTTER
4. ACTUAL WIDTH OF BASE WIDENING MAY VARY DUE TO ACTUAL EXISTING PAVEMENT WIDTH. CONTRACTOR MAY ELECT TO PLACE UNIFORM WIDTH BASE WIDENING STRIP AT NO ADDITIONAL COST.

**PALM BEACH COUNTY**  
 ENGINEERING AND PUBLIC WORKS  
**ROADWAY PRODUCTION**  
 2300 N. JOG ROAD  
 WEST PALM BEACH, FLORIDA 33411-3745



|     |          |    |      |
|-----|----------|----|------|
| NO. | REVISION | BY | DATE |
|     |          |    |      |

SCALE: N.T.S.  
 APPROVED:  
 DRAWN:  
 CHECKED:  
 DATE: FIELD BOOK NO.

**METRIC ENGINEERING, INC.**  
 MANUEL A. SAULEDA  
 P.E. LICENSE 45988  
 13940 SW 180th STREET, SUITE 200  
 MIAMI, FLORIDA 33186  
 CERTIFICATE OF AUTHORIZATION No. 2384

**SILVER BEACH RD.**  
 DESIGN FILE NAME  
**TYPICAL SECTIONS**  
 DRAWING NO.

SHEET: 7  
 OF:  
 PROJECT NO. 2003514

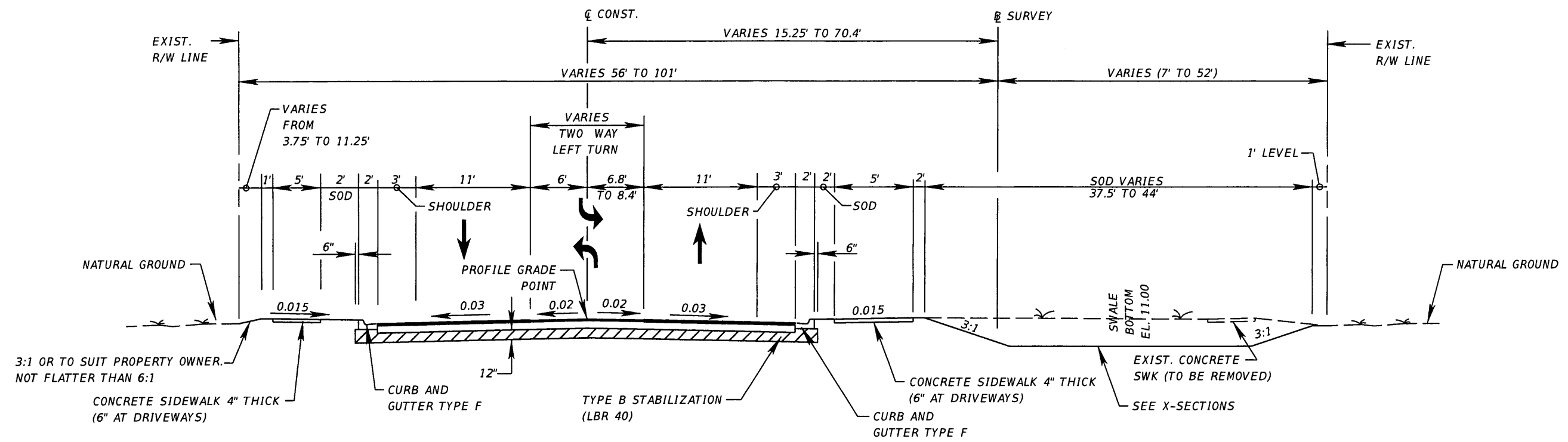


|               |                 |
|---------------|-----------------|
| NO.           | DATE            |
| REVISION      | BY              |
| SCALE: N.T.S. | APPROVED:       |
| DRAWN:        | CHECKED:        |
| DATE:         | FIELD BOOK NO.: |



**SILVER BEACH RD.**  
DRAWING NO.  
DESIGN FILE NAME  
**TYPICAL SECTIONS**

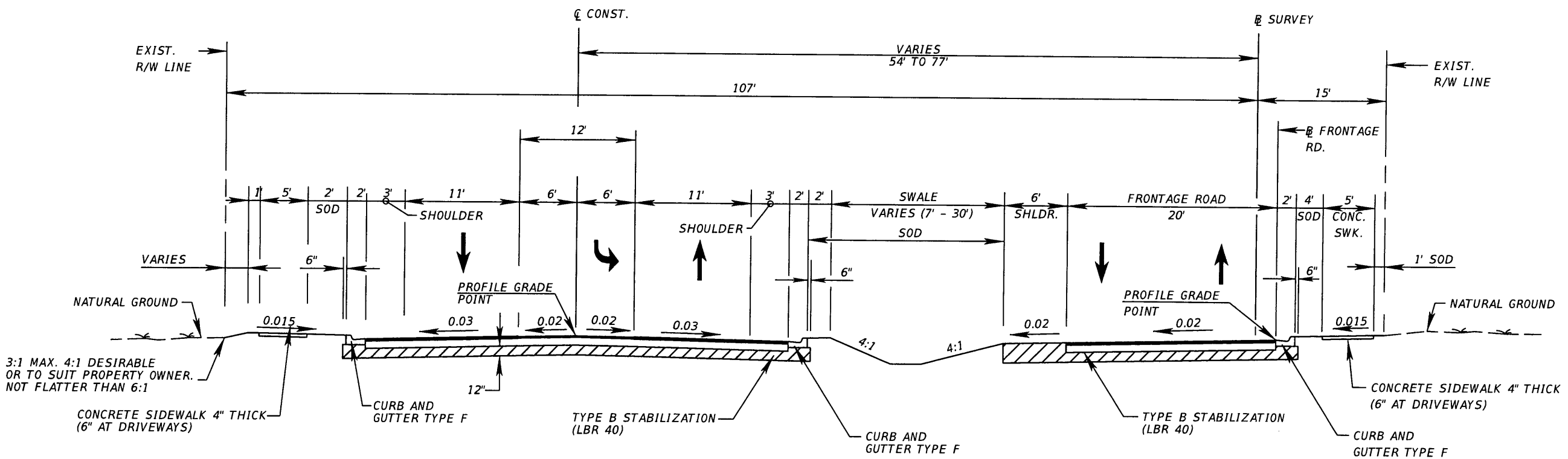
SHEET: 8  
OF:  
PROJECT NO. 2003514



**SILVER BEACH ROAD**  
STA. 111+00.00 TO STA. 116+88.53  
DESIGN SPEED 35 MPH

**NEW CONSTRUCTION**  
OPTIONAL BASE GROUP 7  
1 1/2" TYPE SP STRUCTURAL COURSE (T.L.C)  
1" FRICTION COURSE FC-9.5





3:1 MAX. 4:1 DESIRABLE  
OR TO SUIT PROPERTY OWNER.  
NOT FLATTER THAN 6:1

**SILVER BEACH ROAD**  
STA. 116+88.53 TO STA. 130+09.57  
DESIGN SPEED 35 MPH

**NEW CONSTRUCTION**

OPTIONAL BASE GROUP 7  
1 1/2" TYPE SP STRUCTURAL COURSE (T.L.C)  
1" FRICTION COURSE FC-9.5

|     |          |    |      |
|-----|----------|----|------|
| NO. | REVISION | BY | DATE |
|     |          |    |      |
|     |          |    |      |
|     |          |    |      |

SCALE: N.T.S.  
APPROVED: \_\_\_\_\_  
DRAWN: \_\_\_\_\_  
CHECKED: \_\_\_\_\_  
DATE: \_\_\_\_\_

FIELD BOOK NO. \_\_\_\_\_

MANUEL A. SAILEDIA  
P.E. LICENSE 45988

METRIC ENGINEERING, INC.  
13946 SW 19th Street, Suite 200  
Miami, Florida 33186  
CERTIFICATE OF AUTHORIZATION No. 23294

**SILVER BEACH RD.**

DESIGN FILE NAME: \_\_\_\_\_  
DRAWING NO.: \_\_\_\_\_

**TYPICAL SECTIONS**

SHEET: 9  
OF: \_\_\_\_\_  
PROJECT NO. 2003514



|     |          |    |      |
|-----|----------|----|------|
| NO. | REVISION | BY | DATE |
|     |          |    |      |
|     |          |    |      |
|     |          |    |      |

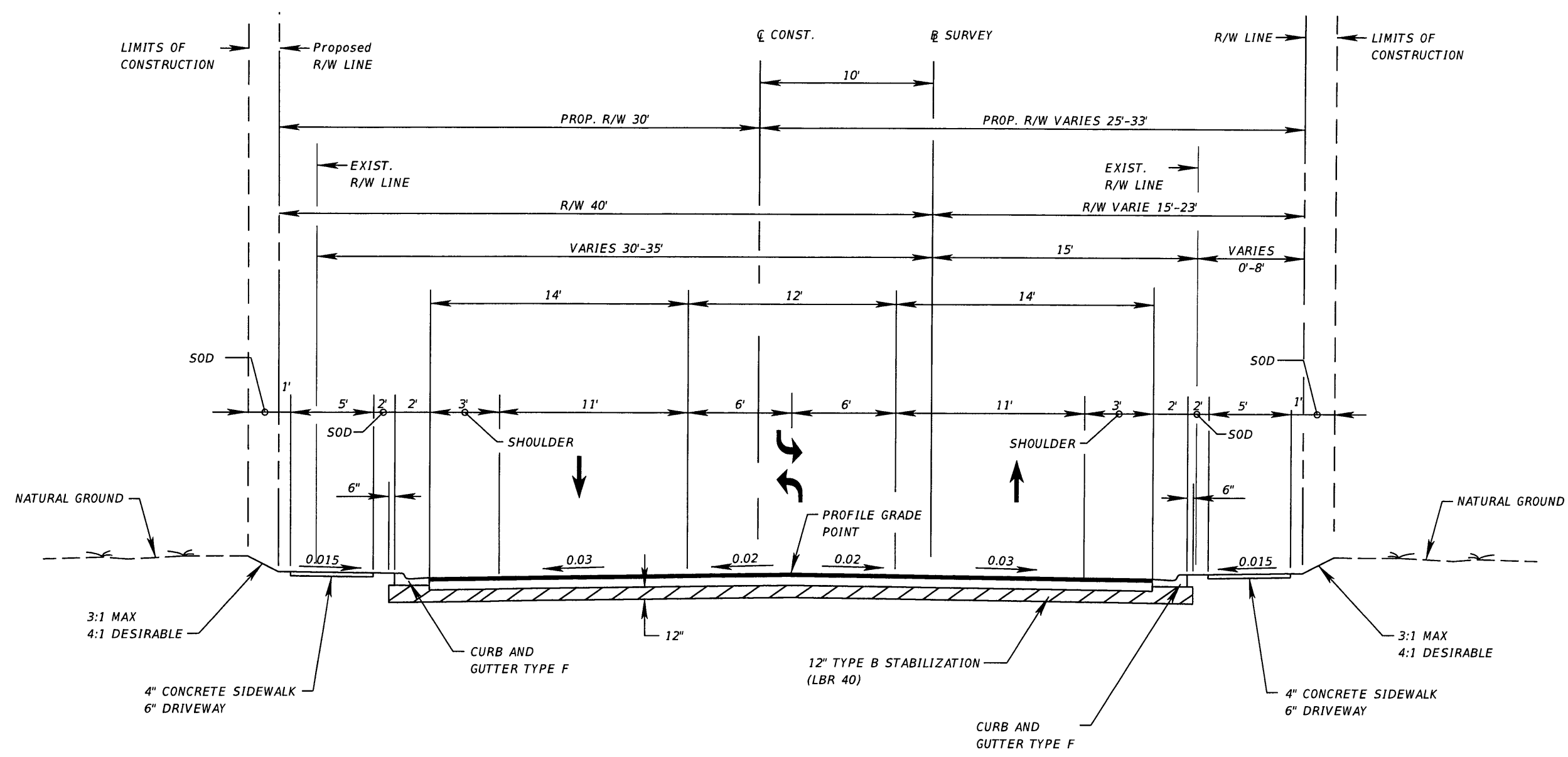
SCALE: N.T.S.  
 APPROVED: \_\_\_\_\_  
 DRAWN: \_\_\_\_\_  
 CHECKED: \_\_\_\_\_  
 DATE: \_\_\_\_\_

FIELD BOOK NO. \_\_\_\_\_

**SILVER BEACH RD.**  
 DESIGN FILE NAME  
**TYPICAL SECTIONS**

DRAWING NO. \_\_\_\_\_

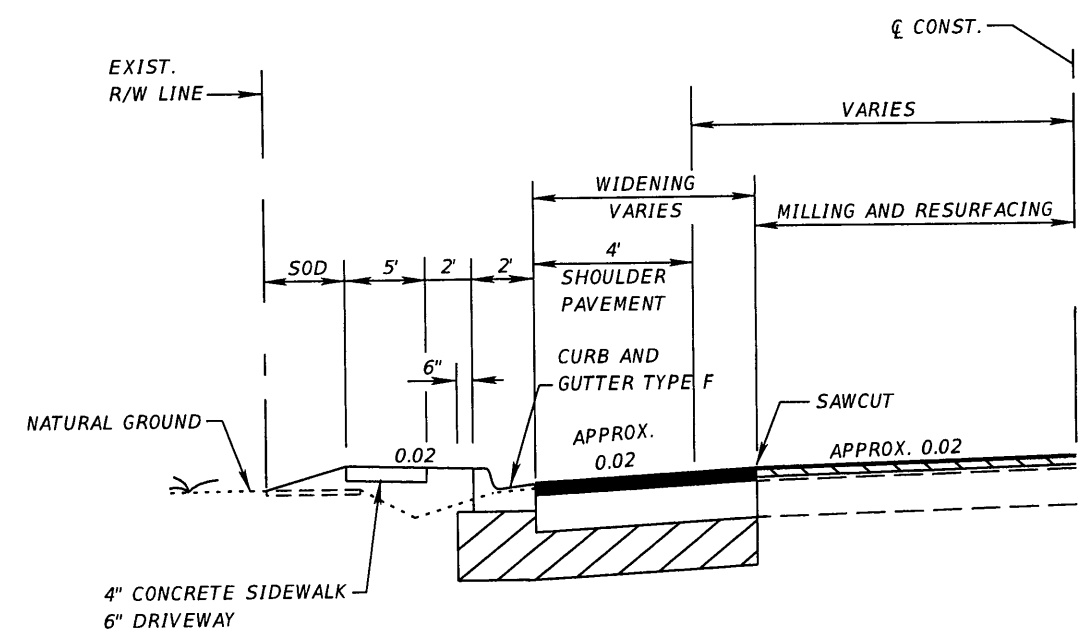
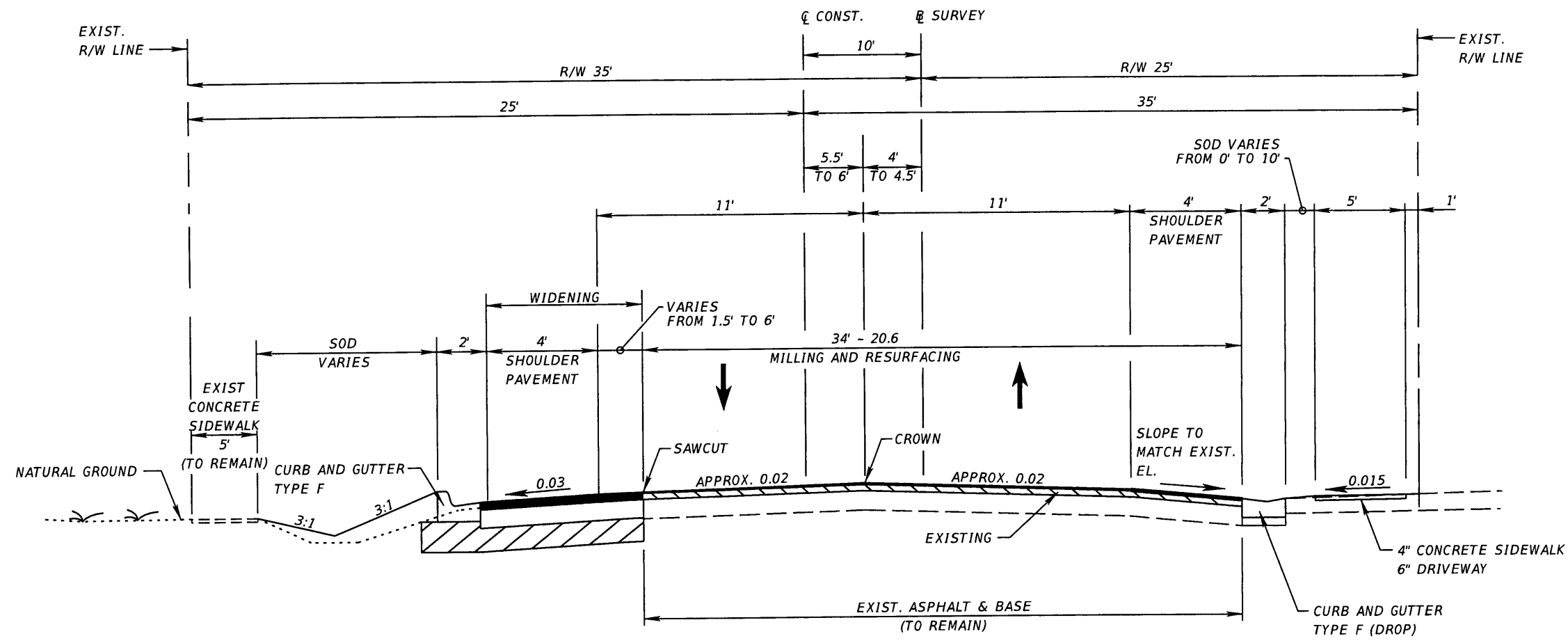
SHEET: 10  
 OF: \_\_\_\_\_  
 PROJECT NO. 2003514



**SILVER BEACH ROAD**  
 STA. 130+09.57 TO STA. 146+14.17  
 DESIGN SPEED 35 MPH

**NEW CONSTRUCTION**

OPTIONAL BASE GROUP 7  
 1 1/2" TYPE SP STRUCTURAL COURSE (T.L.C)  
 1" FRICTION COURSE FC-9.5



**C&G SECTION DETAIL (LT)**

STA. 147+51 TO 149+20

**SILVER BEACH ROAD**  
 STA. 146+14.17 TO STA. 153+80.00  
 DESIGN SPEED 35 MPH

**WIDENING**

OPTIONAL BASE GROUP 13  
 1 1/2" TYPE SP STRUCTURAL COURSE (T.L.C)  
 1" FRICTION COURSE FC-9.5

**MILLING AND RESURFACING**

MILL 1" (AVG. DEPTH)  
 OVERBUILD WITH TYPE 5 ASPH. CONC.  
 RESURFACE WITH 1" FRICTION COURSE FC-9.5

PALM BEACH COUNTY  
 ENGINEERING AND PUBLIC WORKS  
**ROADWAY PRODUCTION**  
 2800 N. JOG ROAD  
 WEST PALM BEACH, FLORIDA 33411-2745

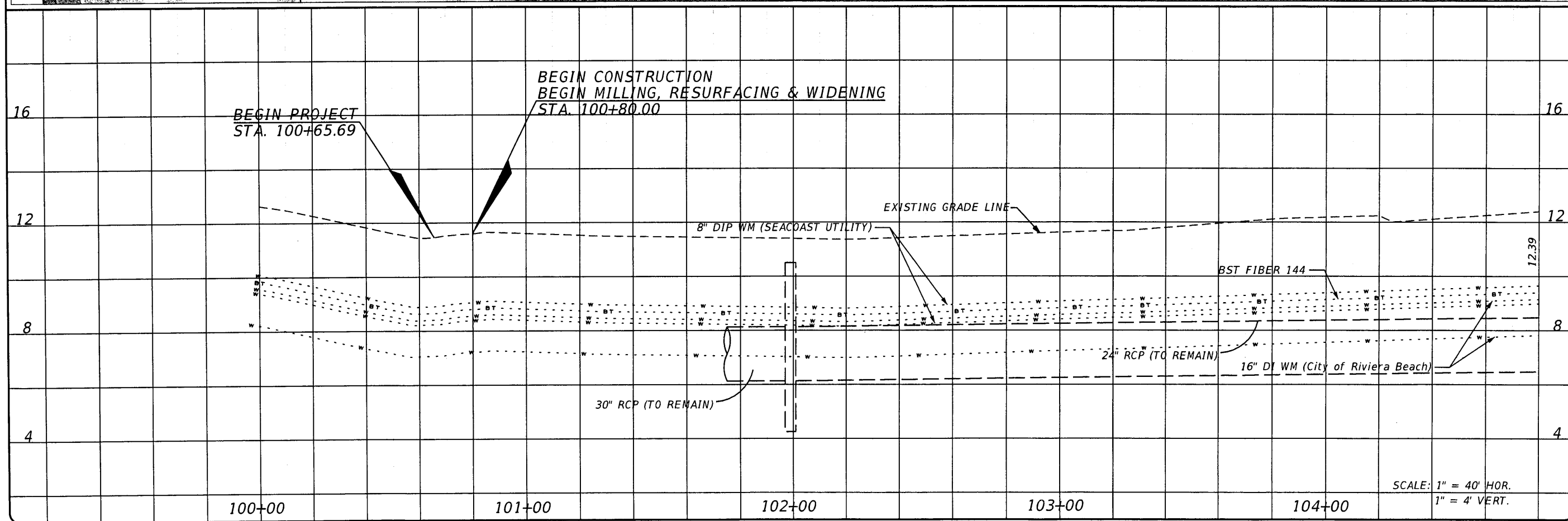
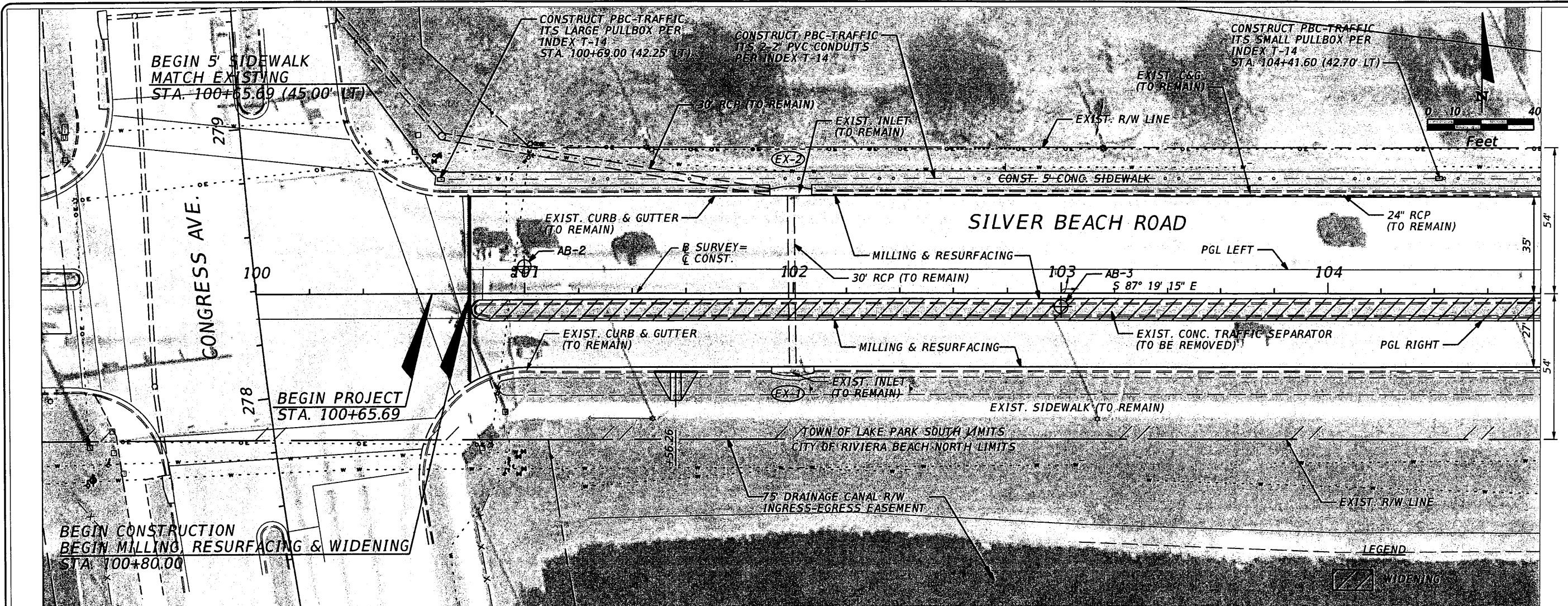


|                |        |
|----------------|--------|
| DATE           |        |
| BY             |        |
| REVISION       |        |
| NO.            |        |
| SCALE:         | N.T.S. |
| APPROVED:      |        |
| DRAWN:         |        |
| CHECKED:       |        |
| DATE:          |        |
| FIELD BOOK NO. |        |

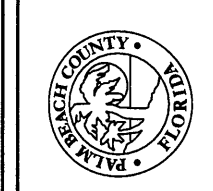
MANUEL A. SAALEDA  
 P.E. LICENSE 45888  
  
 METRIC ENGINEERING, INC.  
 13940 SW 136th Street, Suite 200  
 Miami, Florida 33186  
 CERTIFICATE OF AUTHORIZATION No. 2394

**SILVER BEACH RD.**  
 DESIGN FILE NAME  
**TYPICAL SECTIONS**  
 DRAWING NO.

SHEET: 11  
 OF:  
 PROJECT NO. 2003514



**PALM BEACH COUNTY**  
**ENGINEERING AND PUBLIC WORKS**  
**ROADWAY PRODUCTION**  
 2300 N. JOG ROAD  
 WEST PALM BEACH, FLORIDA 33411-2745



| NO. | REVISION | DATE |
|-----|----------|------|
|     |          |      |

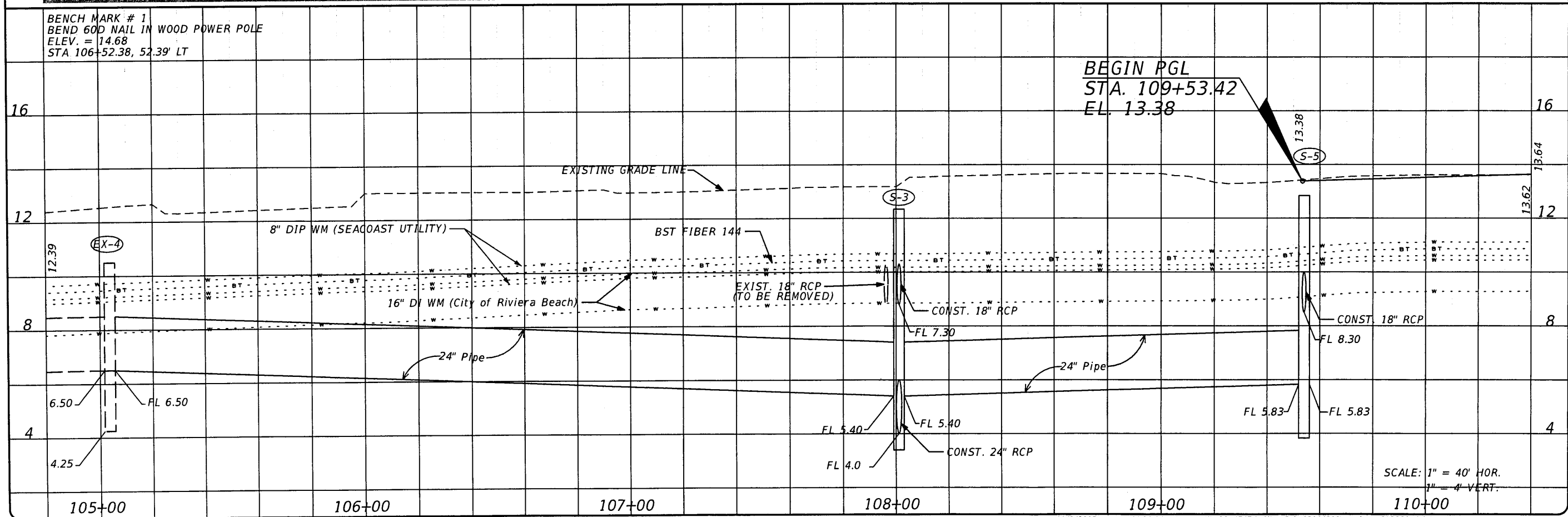
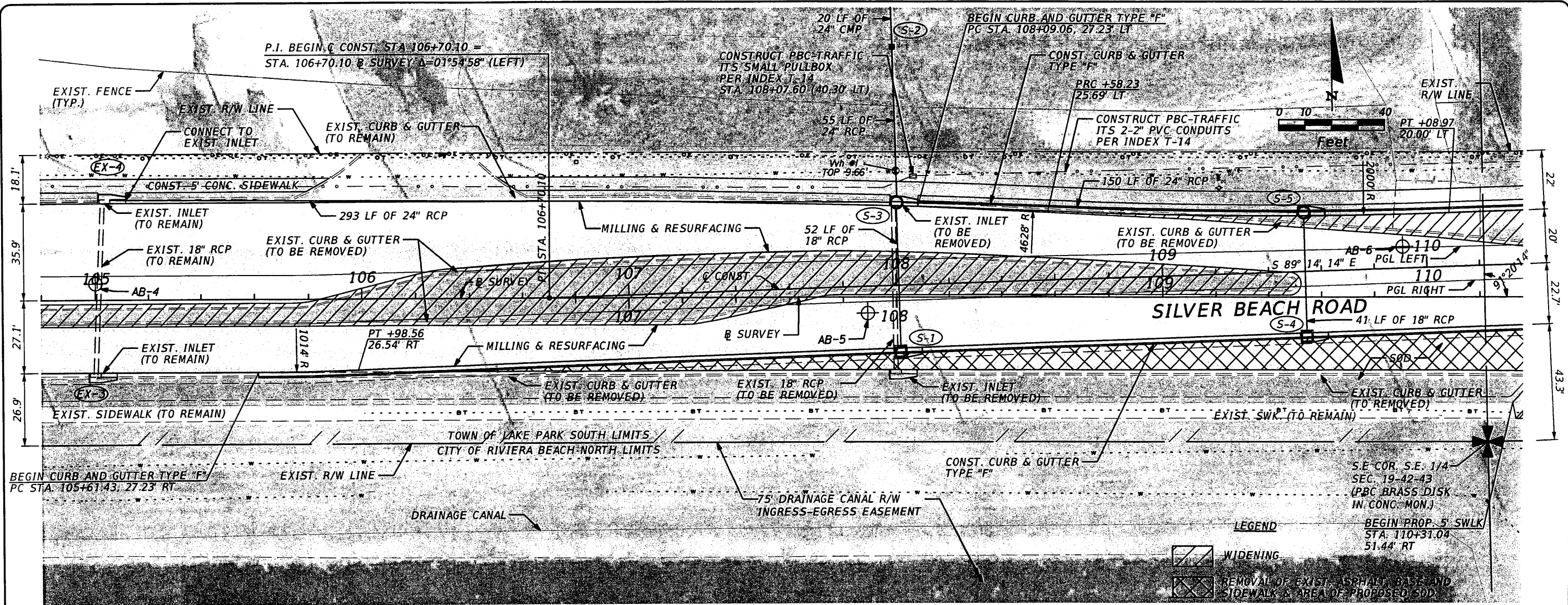
SCALE: 40  
 APPROVED:   
 DRAWN:   
 CHECKED:   
 DATE:   
 FIELD BOOK NO.

**METRIC ENGINEERING, INC.**  
 MANUEL A. SAGUEDA  
 P.E. LICENSE 45988  
 METRIC ENGINEERING, INC.  
 15965 N.W. 11th Ave., Suite 200  
 Miami, Florida 33187  
 CERTIFICATE OF AUTHORIZATION No. 2294

**SILVER BEACH RD.**  
 DESIGN FILE NAME:   
 DRAWING NO.   
**PLAN & PROFILE**

SHEET: 17  
 OF:   
 PROJECT NO. 2003514





PALM BEACH COUNTY  
 ENGINEERING AND PUBLIC WORKS  
**ROADWAY PRODUCTION**  
 2300 N. JOG ROAD  
 WEST PALM BEACH, FLORIDA 33411-2745

|           |                |
|-----------|----------------|
| BY DATE   |                |
| REVISION  |                |
| NO.       |                |
| SCALE: 40 | FIELD BOOK NO. |
| APPROVED: |                |
| DRAWN:    |                |
| CHECKED:  |                |
| DATE:     |                |

METRIC ENGINEERING, INC.  
 13940 SW 13th Street, Suite 200  
 WEST PALM BEACH, FLORIDA 33411  
 P.E. LICENSE #5898  
 CERTIFICATE OF AUTHORIZATION # 2294

**SILVER BEACH RD.**  
 DESIGN FILE NAME  
**PLAN & PROFILE**  
 DRAWING NO.

SHEET: 18  
 OF:  
 PROJECT NO. 2003514





| NO. | REVISION | DATE |
|-----|----------|------|
|     |          |      |

SCALE: 40  
APPROVED: \_\_\_\_\_  
DRAWN: \_\_\_\_\_  
CHECKED: \_\_\_\_\_  
DATE: \_\_\_\_\_

FIELD BOOK NO. \_\_\_\_\_

MANUEL A. SAULIDA  
P.E. LICENSE #53988

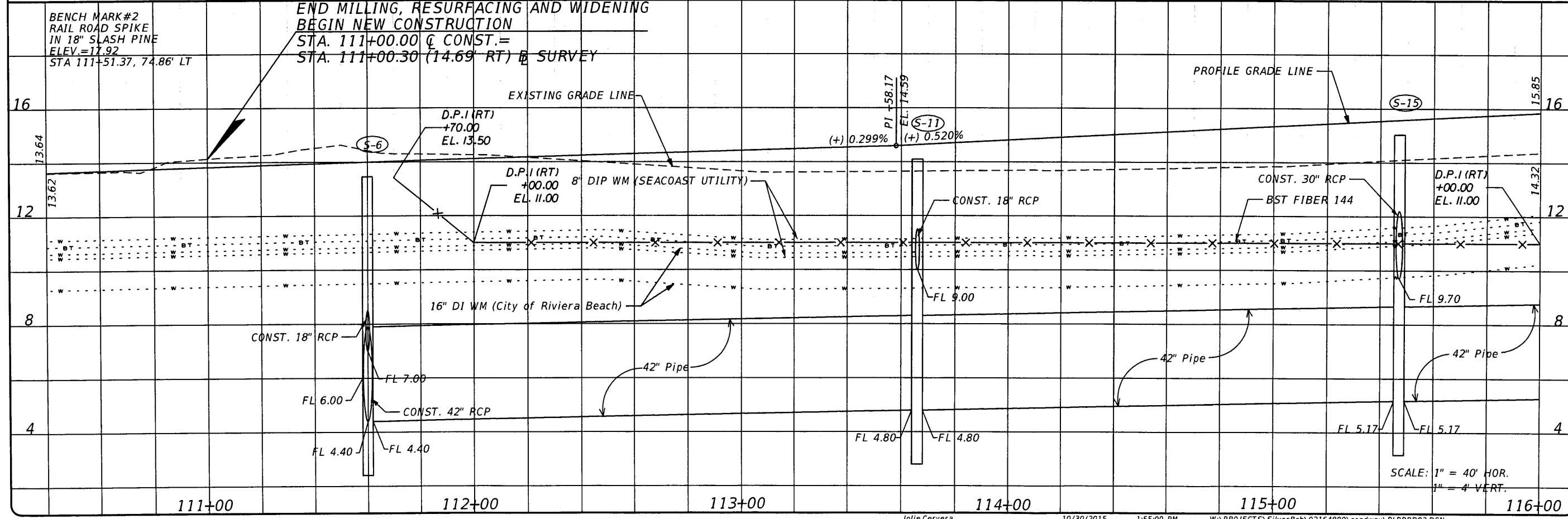
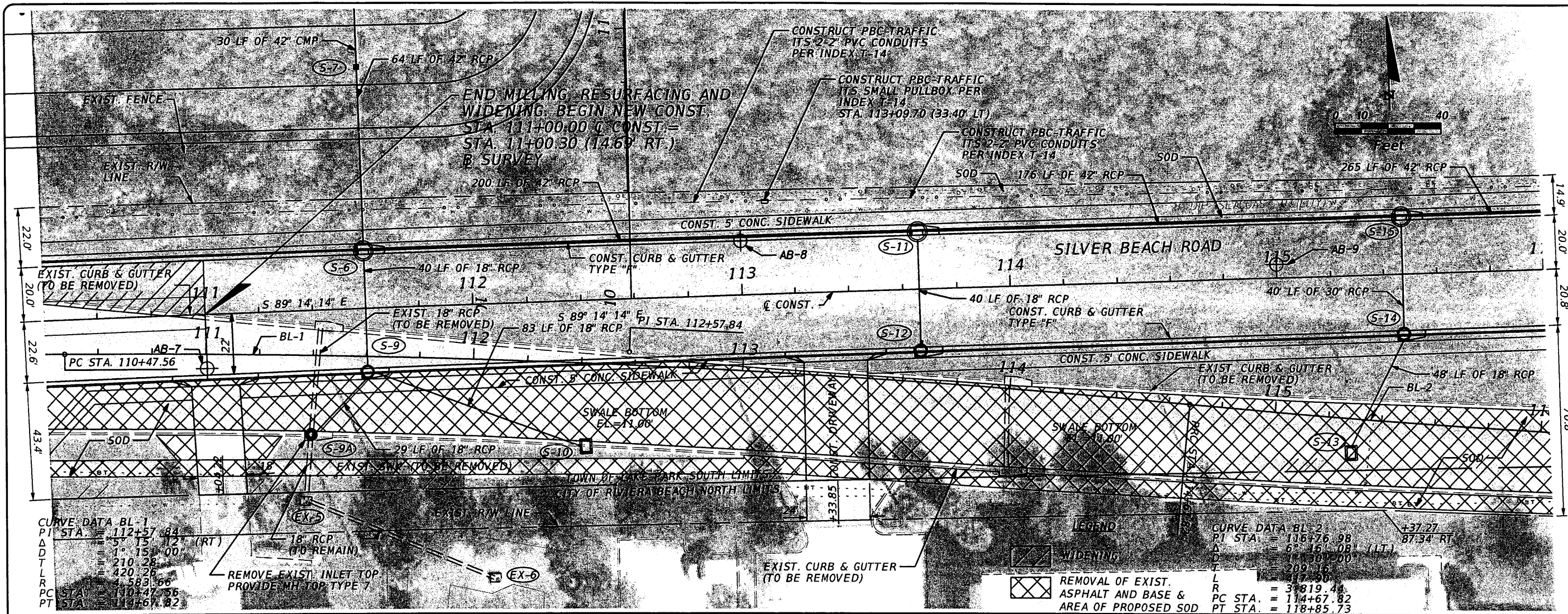
METRIC ENGINEERING, INC.  
13940 W. PALM BLVD., SUITE 200  
WEST PALM BEACH, FLORIDA 33411  
CERTIFICATE OF AUTHORIZATION No. 2294

**SILVER BEACH RD.**

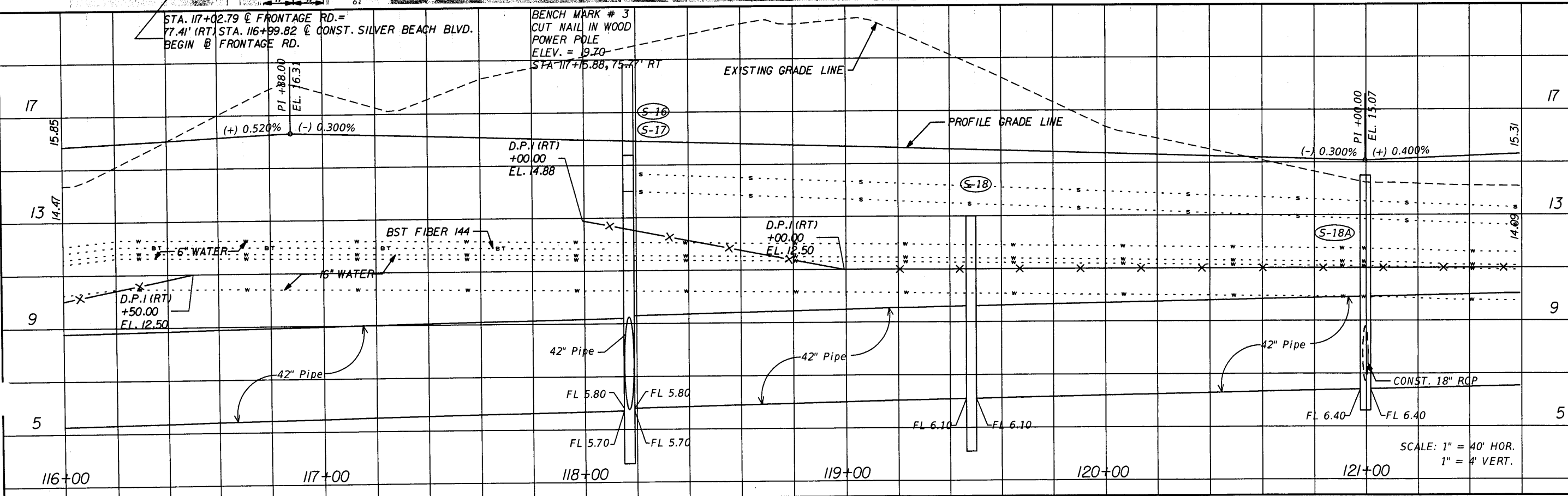
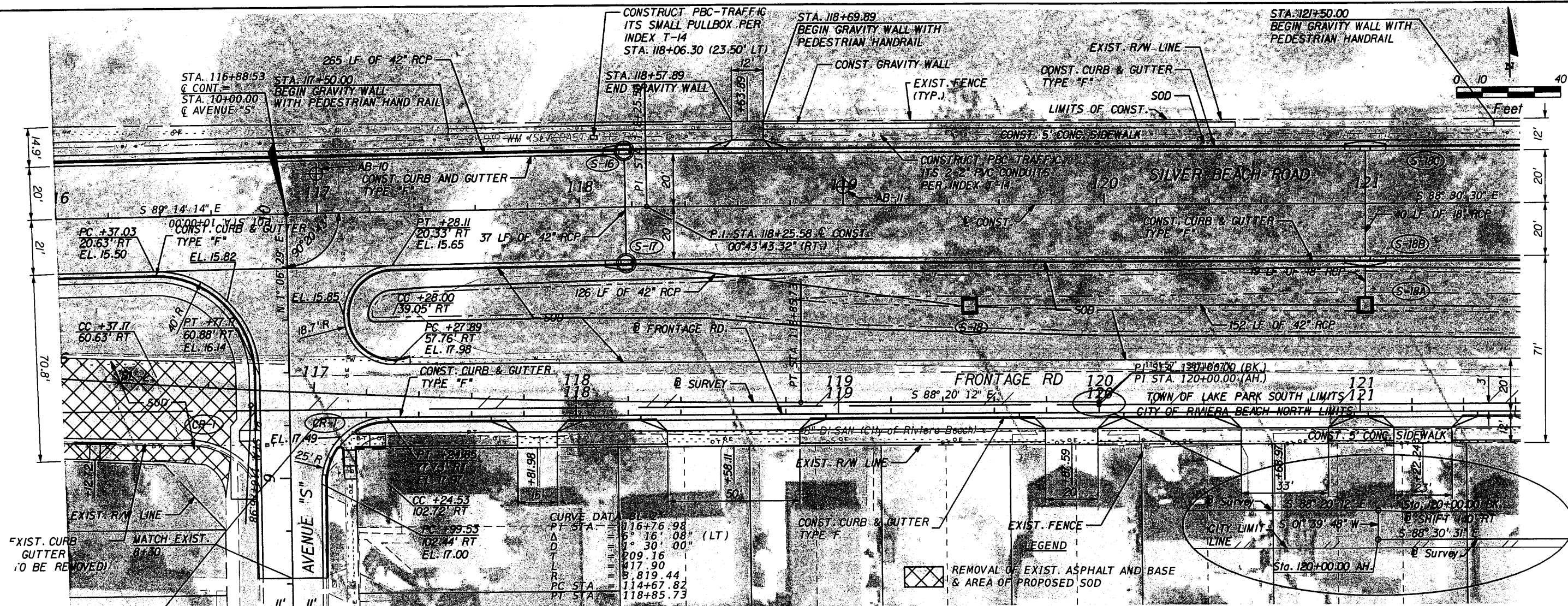
DESIGN FILE NAME: \_\_\_\_\_  
DRAWING NO.: \_\_\_\_\_

**PLAN & PROFILE**

SHEET: 19  
OF: \_\_\_\_\_  
PROJECT NO: 2003514







CURVE DATA

|        |                 |
|--------|-----------------|
| BL     | 27              |
| PT STA | 116+76.98       |
| Δ      | 6° 30' 00" (LT) |
| D      | 209.16          |
| T      | 417.90          |
| L      | 819.44          |
| PC STA | 114+67.82       |
| PI STA | 118+85.73       |

**PALM BEACH COUNTY**  
ENGINEERING AND PUBLIC WORKS  
**ROADWAY PRODUCTION**  
200 N. JOG ROAD  
WEST PALM BEACH, FLORIDA 33411-3745

**PALM BEACH COUNTY**  
FLORIDA

|          |      |
|----------|------|
| NO.      | DATE |
| REVISION |      |

SCALE: 40  
APPROVED: \_\_\_\_\_  
DRAWN: \_\_\_\_\_  
CHECKED: \_\_\_\_\_  
DATE: \_\_\_\_\_

MANUEL A. SAULEDA  
P.E. LICENSE # 45988

**METRIC ENGINEERING, INC.**  
INCORPORATED & LICENSED IN FLORIDA  
13940 SW 136th STREET, SUITE 200  
MIAMI, FLORIDA 33186  
CERTIFICATE OF REGISTRATION NO. 2294

**SILVER BEACH RD.**  
DRAWING NO. \_\_\_\_\_  
**PLAN & PROFILE**

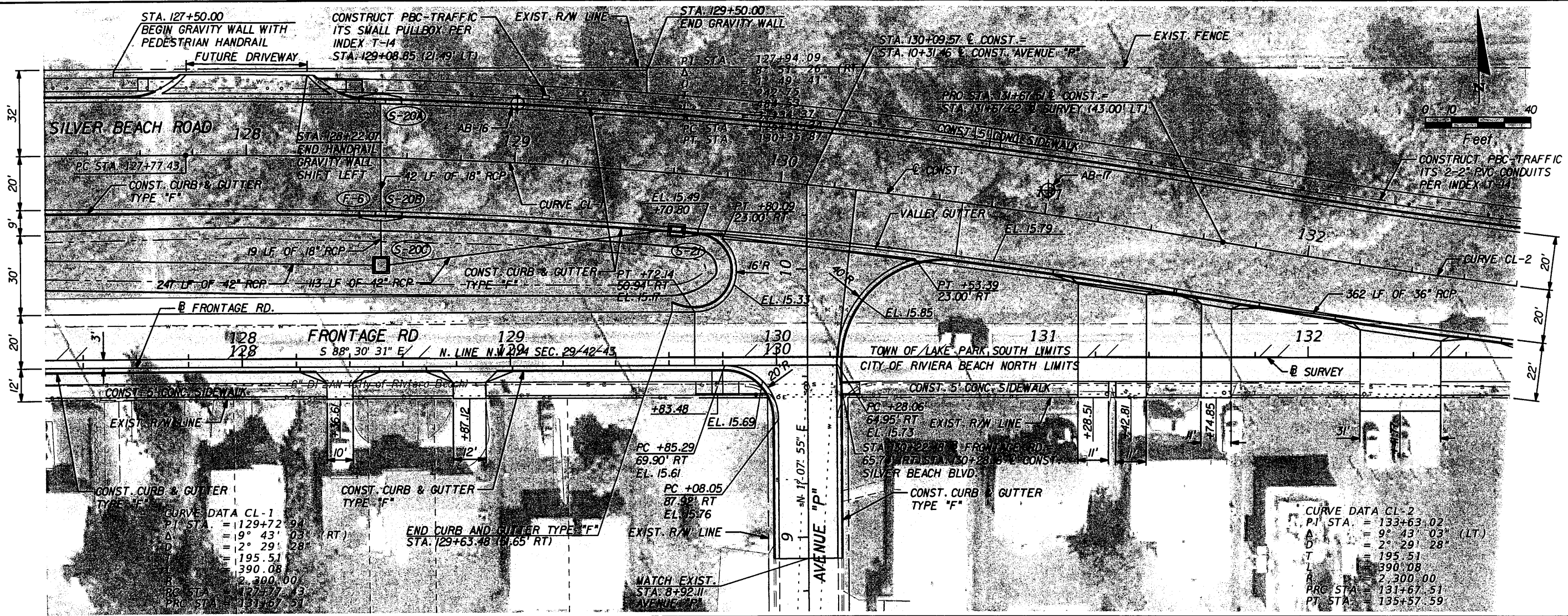
SHEET: 20  
OF: \_\_\_\_\_  
PROJECT NO. 2003514

SCALE: 1" = 40' HOR.  
1" = 4' VERT.



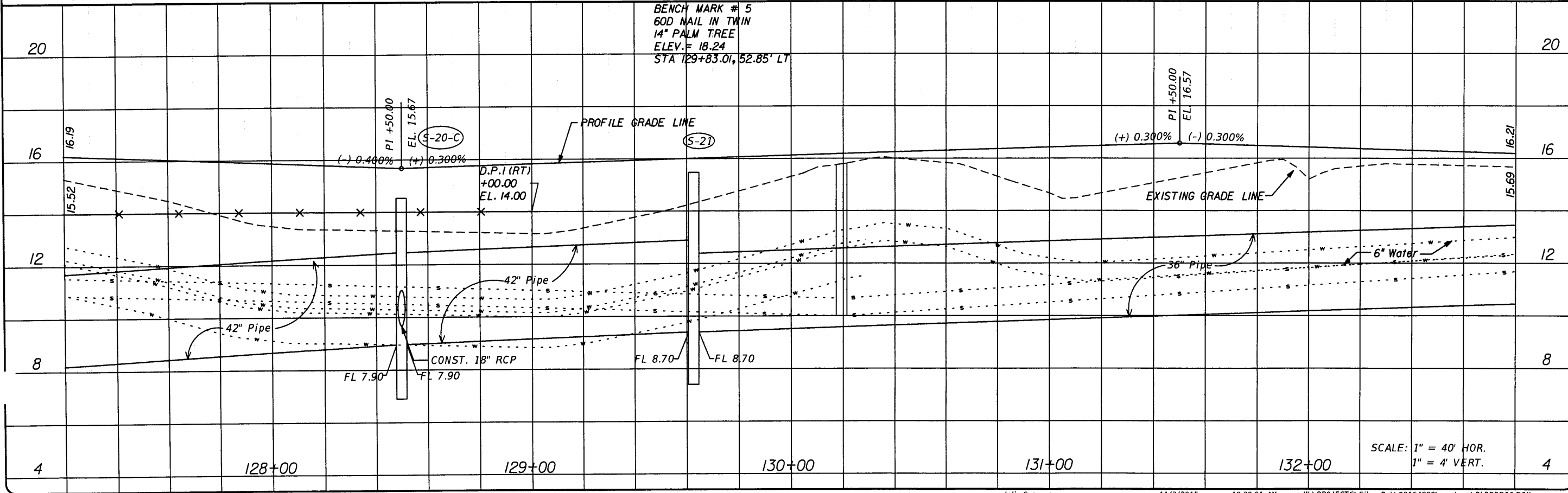






**CURVE DATA CL-1**  
 P.I. STA. = 129+72.94  
 A = 19° 43' 03" (RT)  
 D = 2° 29' 28"  
 L = 195.51  
 T = 390.08  
 R = 2,300.00  
 PC STA. = 127+77.43  
 PT STA. = 131+67.51

**CURVE DATA CL-2**  
 P.I. STA. = 133+63.02  
 A = 9° 43' 03" (LT)  
 D = 2° 29' 28"  
 L = 195.51  
 T = 390.08  
 R = 2,300.00  
 PC STA. = 131+67.51  
 PT STA. = 135+57.59



BENCH MARK # 5  
60D NAIL IN TWIN  
14" PALM TREE  
ELEV. = 18.24  
STA. 129+83.01, 52.85' LT

| NO. | REVISION | BY | DATE |
|-----|----------|----|------|
|     |          |    |      |

SCALE: 40  
 APPROVED: \_\_\_\_\_  
 DRAWN: \_\_\_\_\_  
 CHECKED: \_\_\_\_\_  
 DATE: \_\_\_\_\_

MANUEL A. SAULEDA  
P.E. LICENSE 45988

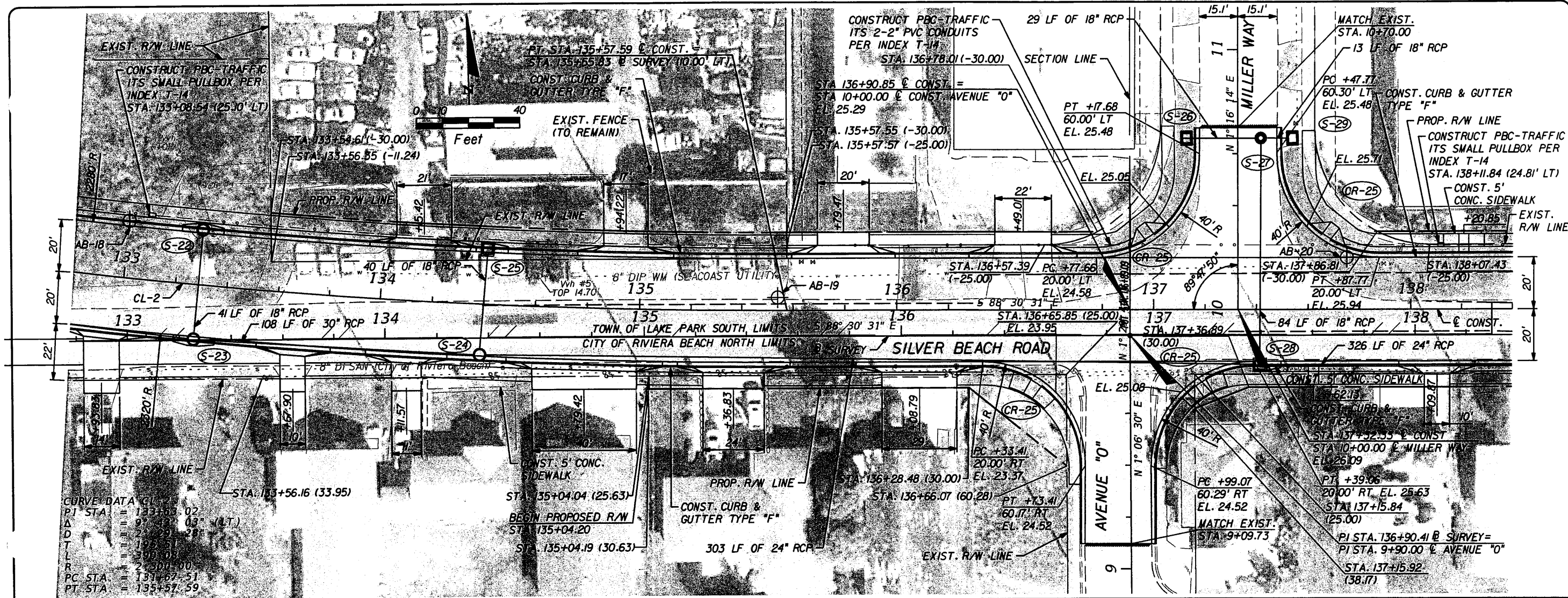
METRIC ENGINEERING, INC.  
1390 SW 30th STREET, SUITE 200  
MIAMI, FLORIDA 33135  
CERTIFICATE OF AUTHORIZATION No. 2294

**SILVER BEACH RD.**  
DESIGN FILE NAME

**PLAN & PROFILE**  
DRAWING NO.

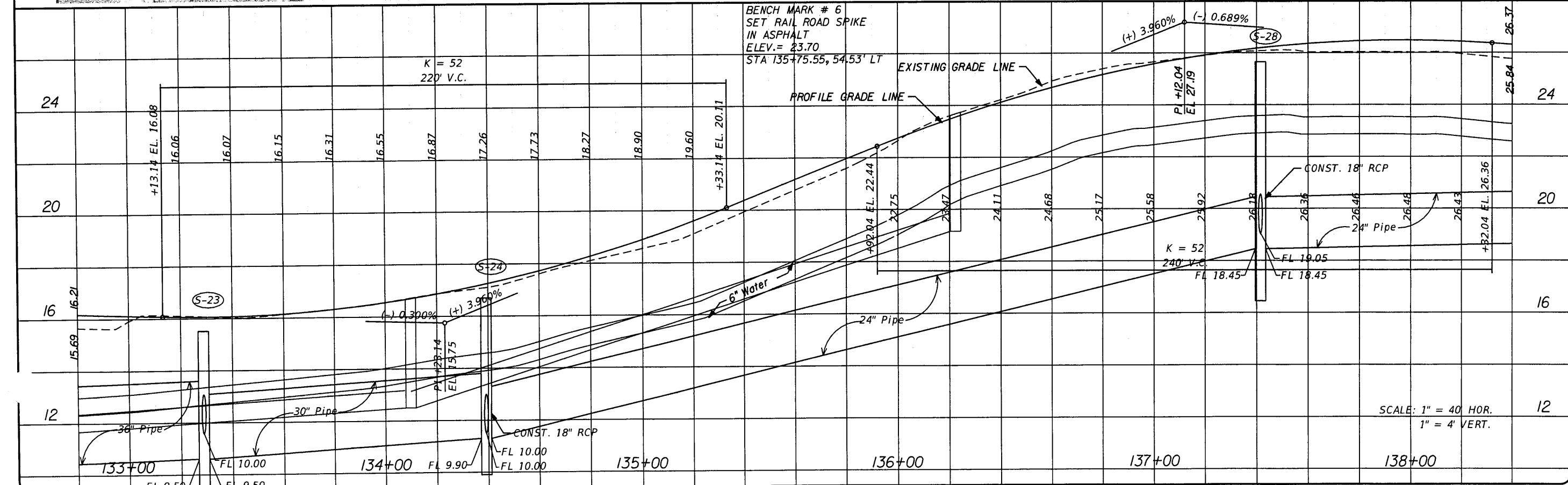
SHEET: 22  
 OF: \_\_\_\_\_  
 PROJECT NO: 2003514





CURVE DATA

|        |                |
|--------|----------------|
| PI STA | = 133+53.02    |
| Δ      | = 97° 03' (LT) |
| D      | = 232.38'      |
| T      | = 197.50'      |
| L      | = 390.00'      |
| R      | = 2,300.00'    |
| PC STA | = 131+67.51    |
| PT STA | = 135+57.59    |



PALM BEACH COUNTY  
ENGINEERING AND PUBLIC WORKS

**ROADWAY PRODUCTION**

2000 N. JOG ROAD  
WEST PALM BEACH, FLORIDA 33411-2745

|                |      |
|----------------|------|
| NO.            | DATE |
| REVISION       | BY   |
| SCALE:         | 40   |
| APPROVED:      |      |
| DRAWN:         |      |
| CHECKED:       |      |
| DATE:          |      |
| FIELD BOOK NO. |      |

PANUEL A. SILEDA  
P.E. LICENSE # 45986

METRIC ENGINEERING, INC.  
REGISTERED PROFESSIONAL ENGINEERS  
13940 SW 158th STREET, SUITE 200  
CERTIFICATE OF AUTHORIZATION No. 2294

**SILVER BEACH RD.**

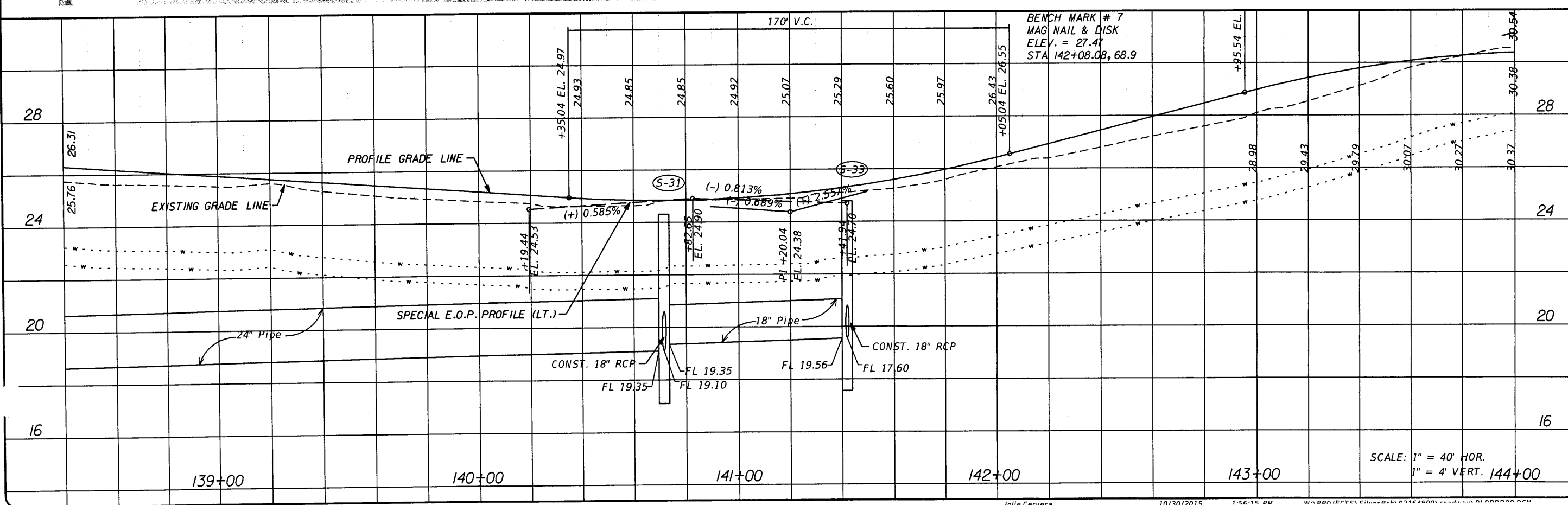
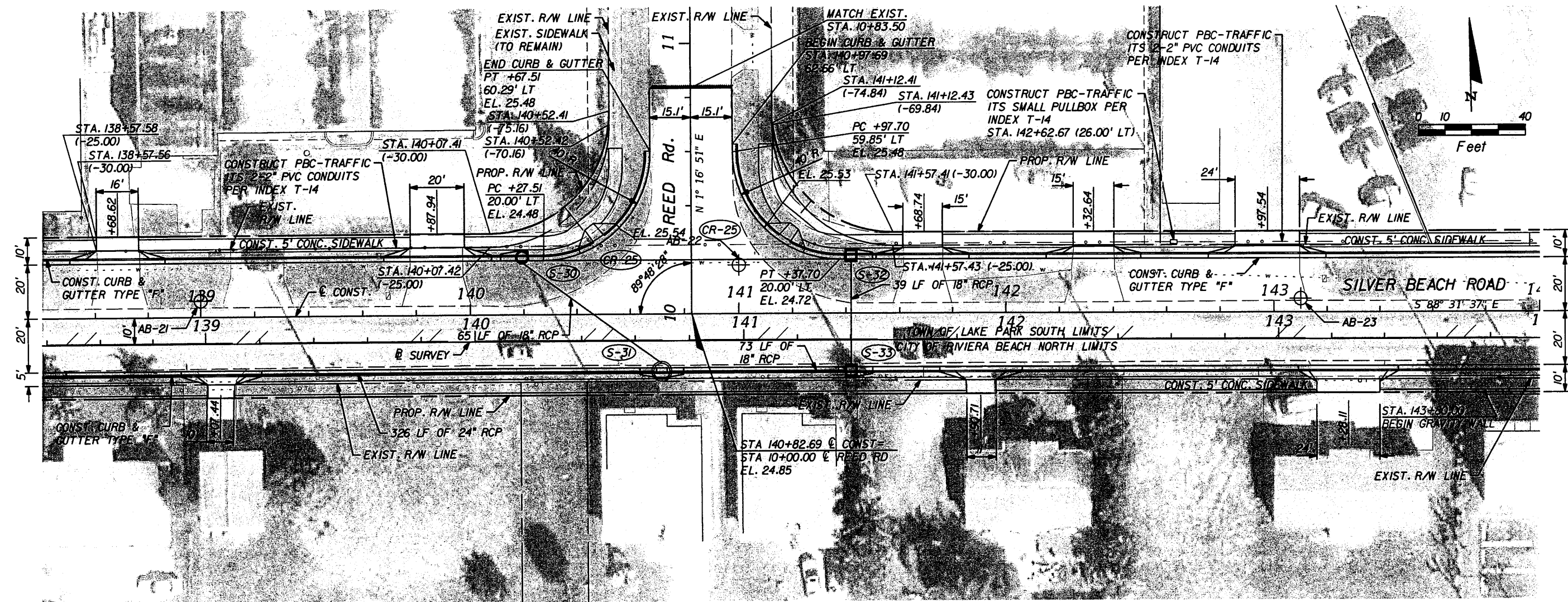
DESIGN FILE NAME: \_\_\_\_\_ DRAWING NO. \_\_\_\_\_

**PLAN & PROFILE**

SHEET: 23

OF: \_\_\_\_\_

PROJECT NO. 2003514



**PALM BEACH COUNTY**  
ENGINEERING AND PUBLIC WORKS

**ROADWAY PRODUCTION**

2600 N. JOG ROAD  
WEST PALM BEACH, FLORIDA 33411-3745

|          |    |      |  |
|----------|----|------|--|
| NO.      | BY | DATE |  |
| REVISION |    |      |  |

SCALE: 40  
 APPROVED: \_\_\_\_\_  
 DRAWN: \_\_\_\_\_  
 CHECKED: \_\_\_\_\_  
 DATE: \_\_\_\_\_

FIELD BOOK NO. \_\_\_\_\_

**MANUEL A. SAILEDA**  
P.E. LICENSE 45888

**METRIC ENGINEERING, INC.**  
ENGINEERS • ARCHITECTS • SURVEYORS  
18940 SW 18th STREET, SUITE 200  
MIAMI, FLORIDA • 33188  
CERTIFICATE OF AUTHORIZATION No. 2254

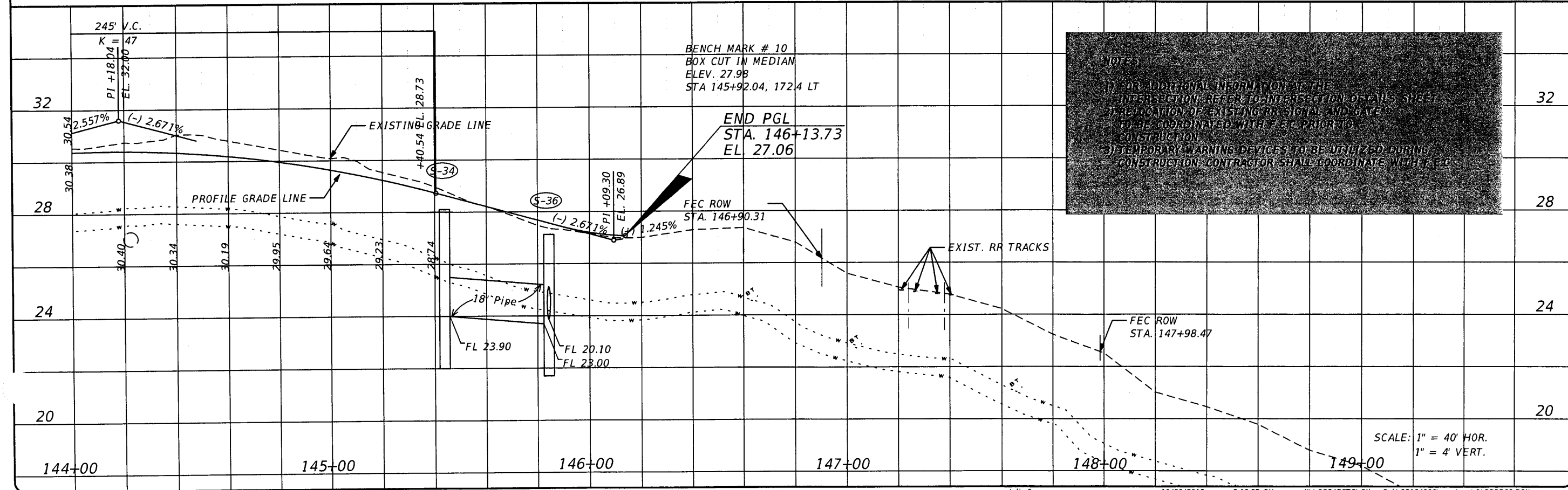
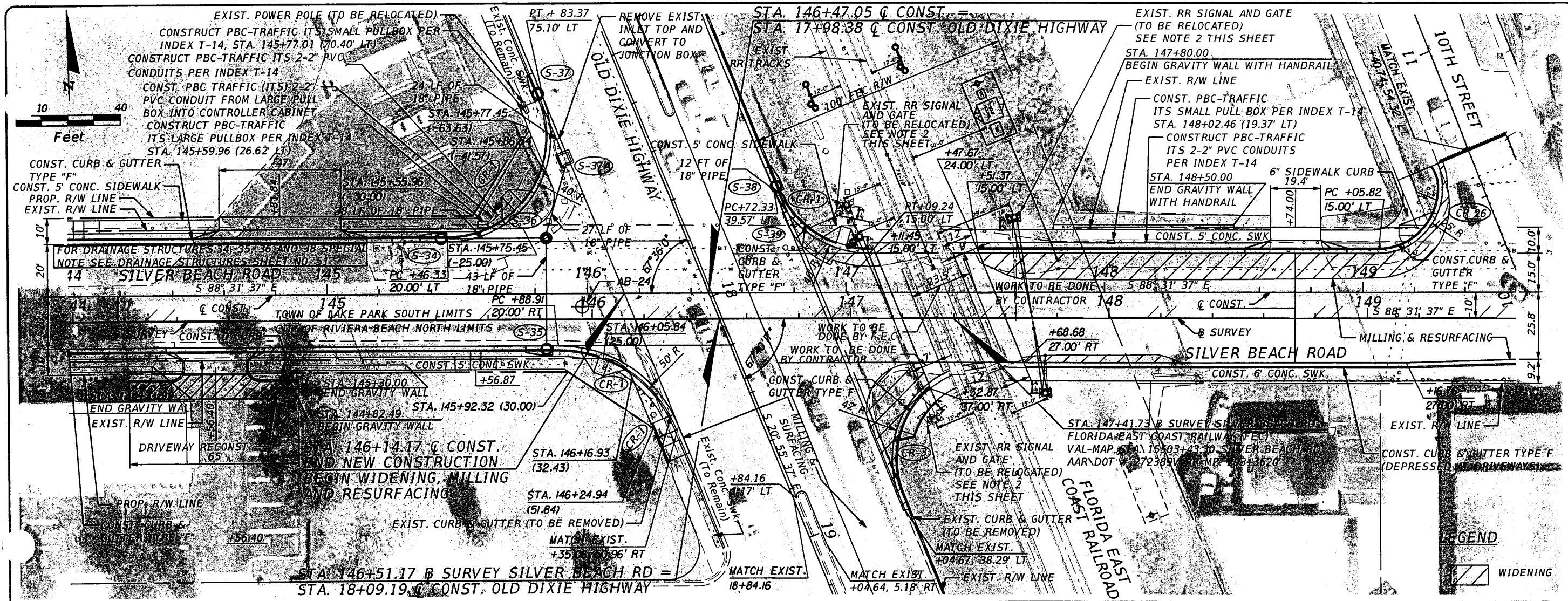
**SILVER BEACH RD.**

DESIGN FILE NAME: \_\_\_\_\_  
DRAWING NO. \_\_\_\_\_

**PLAN & PROFILE**

SHEET: 24  
 OF: \_\_\_\_\_  
 PROJECT NO. 2003514





**NOTES**

- 1) FOR ADDITIONAL INFORMATION AT THE INTERSECTION, REFER TO INTERSECTION DETAILS SHEET.
- 2) RELOCATION OF EXISTING RR SIGNAL AND GATE TO BE COORDINATED WITH F.E.C. PRIOR TO CONSTRUCTION.
- 3) TEMPORARY WARNING DEVICES TO BE UTILIZED DURING CONSTRUCTION. CONTRACTOR SHALL COORDINATE WITH F.E.C.

PALM BEACH COUNTY  
ENGINEERING AND PUBLIC WORKS

**ROADWAY PRODUCTION**

2600 N. JOG ROAD  
WEST PALM BEACH, FLORIDA 33411-3745

| NO. | REVISION | BY | DATE |
|-----|----------|----|------|
|     |          |    |      |

SCALE: 40  
APPROVED:  
DRAWN:  
CHECKED:  
DATE:

FIELD BOOK NO.

MANUEL A. SAULEDA  
P.E. LICENSE 45988

METRIC ENGINEERING, INC.  
13940 SW 39th STREET, SUITE 200  
MIAMI, FLORIDA - 33186  
CERTIFICATE OF AUTHORIZATION No. 2294

**SILVER BEACH RD.**

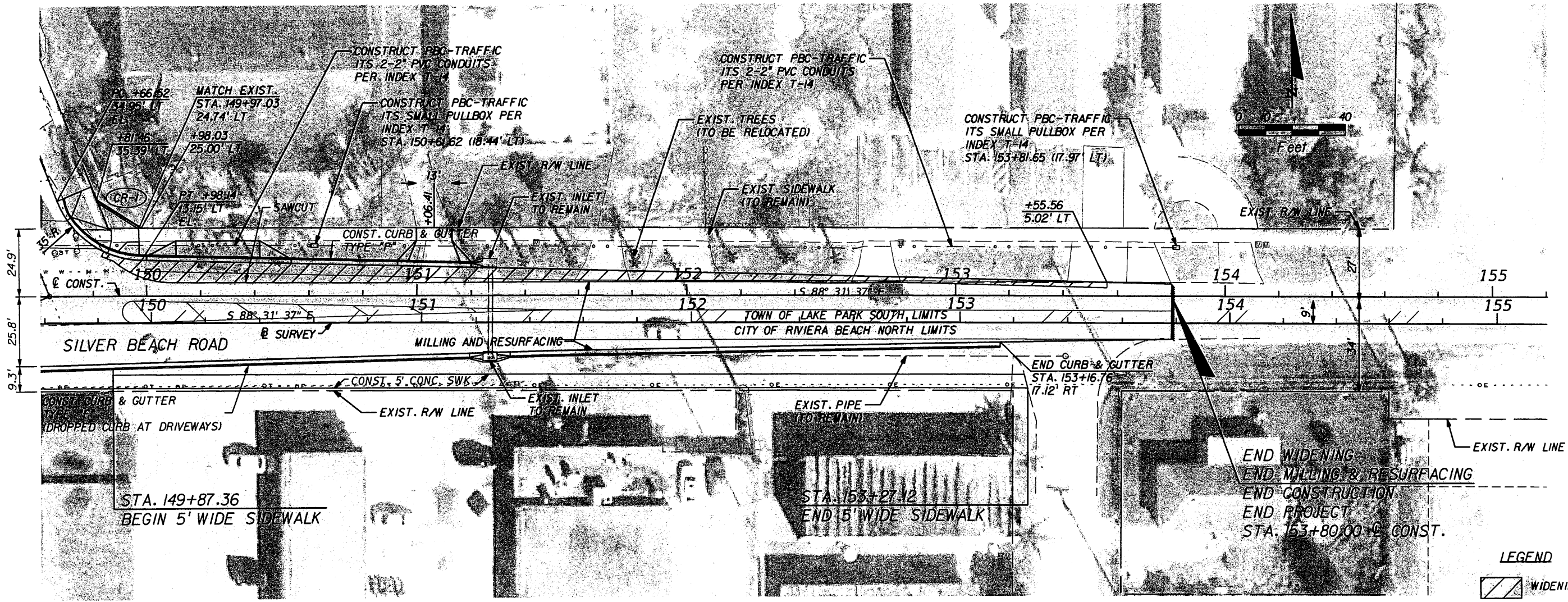
DESIGN FILE NAME: **SILVER BEACH RD.**

DRAWING NO. **PLAN & PROFILE**

SHEET: 25

OF:

PROJECT NO. 2003514



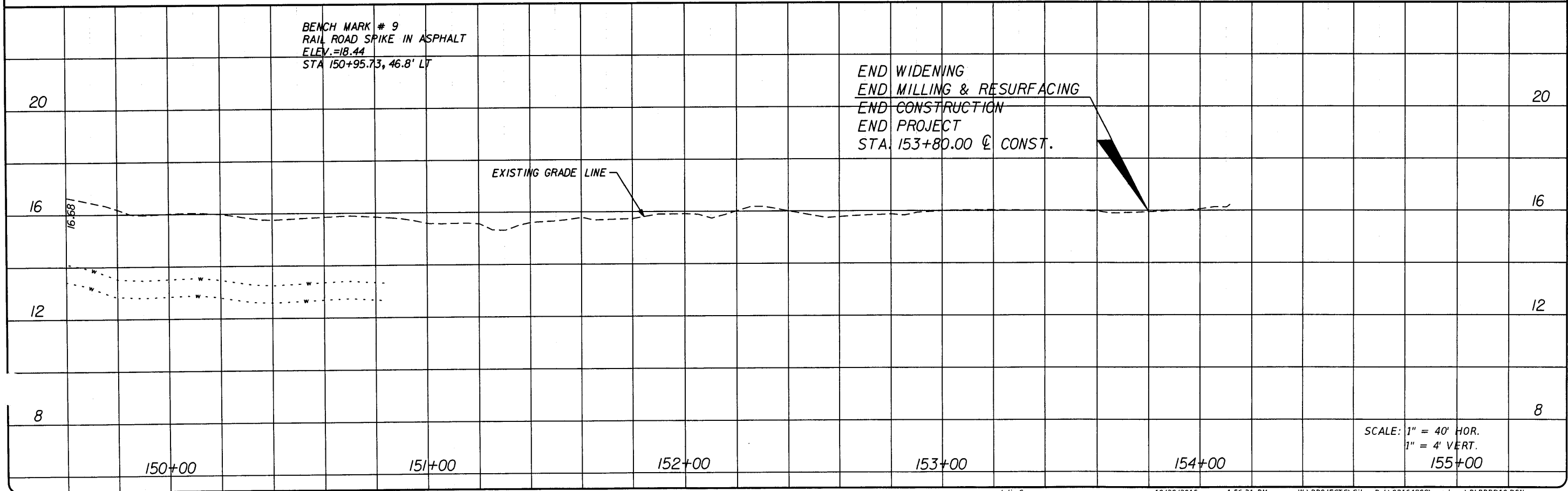
PALM BEACH COUNTY  
ENGINEERING AND PUBLIC WORKS  
**ROADWAY PRODUCTION**  
2800 N. JOG ROAD  
WEST PALM BEACH, FLORIDA 33411-2745



|     |          |    |      |
|-----|----------|----|------|
| NO. | REVISION | BY | DATE |
|     |          |    |      |
|     |          |    |      |
|     |          |    |      |

SCALE: 40  
APPROVED:  
DRAWN:  
CHECKED:  
DATE:

FIELD BOOK NO.



**SILVER BEACH RD.**  
DESIGN FILE NAME  
**PLAN & PROFILE**  
DRAWING NO.

SHEET: 26  
OF:  
PROJECT NO. 2003514

SCALE: 1" = 40' HOR.  
1" = 4' VERT.  
155+00