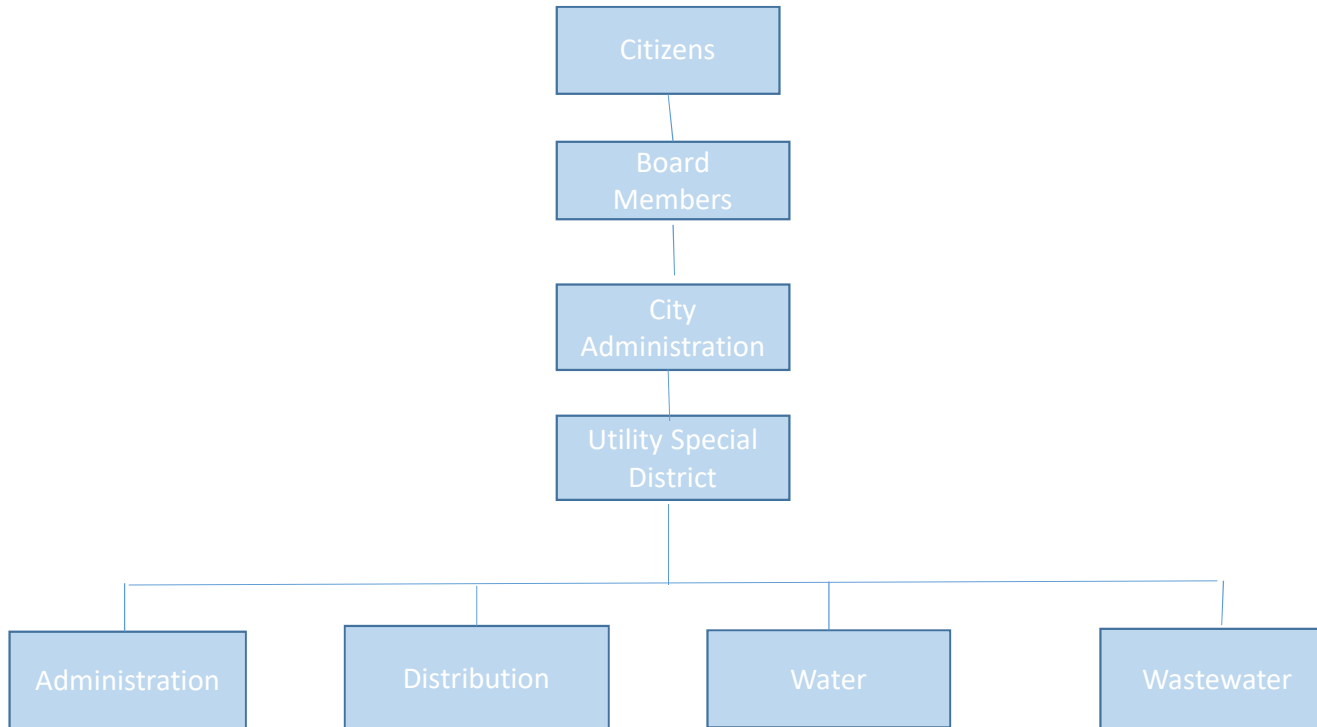


# Utility Special District

# Utility Special District - Organizational Chart



# Utility Special District– Departmental Overview

- The Utility Special District (USD) is responsible for producing and distributing safe drinking water and sewage collection throughout its service area. USD owns, operates, and maintains water and wastewater facilities that serve the corporate limits of the City of Riviera Beach, the Town of Palm Beach Shores, a portion of the City of West Palm Beach, and unincorporated Palm Beach County comprising a service area of approximately eleven square miles.
- USD's water facilities include raw water supply wells, a water treatment plant (WTP), distribution system, and storage and re-pumping facilities. The water system consists of an eastern wellfield comprising seventeen wells and a western wellfield comprising eleven wells, each of which is drilled into a surficial aquifer to provide raw water for the water system. The water system also comprises raw water distribution mains, water treatment facilities, treated water distribution mains, water storage facilities, and booster pumping facilities. USD supplies drinking water to a population of approximately 42,000. The water system consists of three treatment units drinking water to a population of approximately 42,000. The water system consists of three treatment units with permitted capacity of 17.5 million gallons per day.
- USD owns, operates and maintains wastewater facilities in generally the same service area as the water distribution system. The wastewater facilities include a gravity sewer collection system, manholes, wastewater pumping stations, and wastewater transmission piping. USD's wastewater collection and transmission system comprises approximately the same service area as the water system, as a small percentage of customers currently do not have service from both the water and wastewater systems. Such customers, however, are expected to be serviced by both systems in the future. USD's wastewater and wastewater received from the Town of Mangonia Park are conveyed to the East Central Regional Water Reclamation Facility (ECRWF) for treatment. The ECRWF is operated by the City of West Palm Beach, Florida but owned by the City of West Palm Beach, the City of Lake Worth, the City of Riviera Beach, the Town of Palm Beach, and Palm Beach County. The City owns 8.0 MGD of wastewater treatment and disposal capacity in the ECRWF. The District is currently using approximately 5.0 MGD of wastewater treatment and disposal capacity, which is more than adequate to meet USD's needs.

# Utility Special District– Departmental Overview

## Mission Statement

Our mission is to provide the residents and businesses in the City and service areas with reliable water and wastewater utility services in an efficient manner for the well-being of the community.

## FY 18 Organizational Goals

- Develop and implement preventive maintenance programs that improve water treatment process, disinfection process, improve water quality and the wastewater collection system.
- Increase employee knowledge and skill set while enabling a well trained workforce.
- Improve the department’s ability to monitor critical infrastructure.

## FY 18 Organizational Goals

- Completion of capital and infrastructure projects that will replace aging infrastructure and replace broken and antiquated.
  - Continue strengthen our water treatment and wastewater processes to close out the Consent Orders.

## FY 18 Budget Modifications

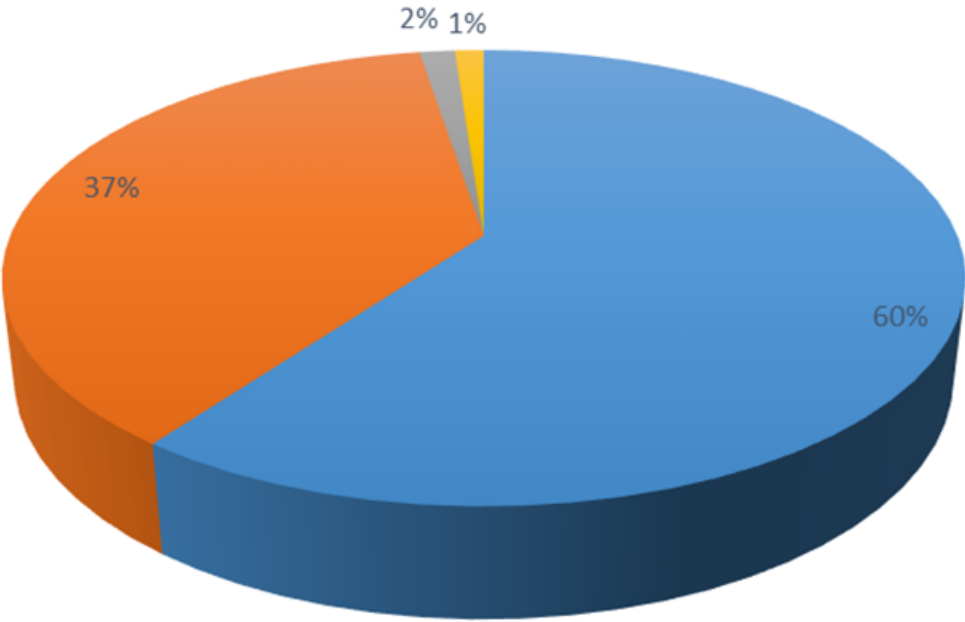
- Increase staffing at the Water Plant by hiring additional Water Plant Operators to cover evening shifts.
- Hire one property Maintenance Manager to manage the repairs and maintenance of the Water Plant and other facilities.

# Utility Special District– Proposed Budget

## FY 18 Proposed Budget

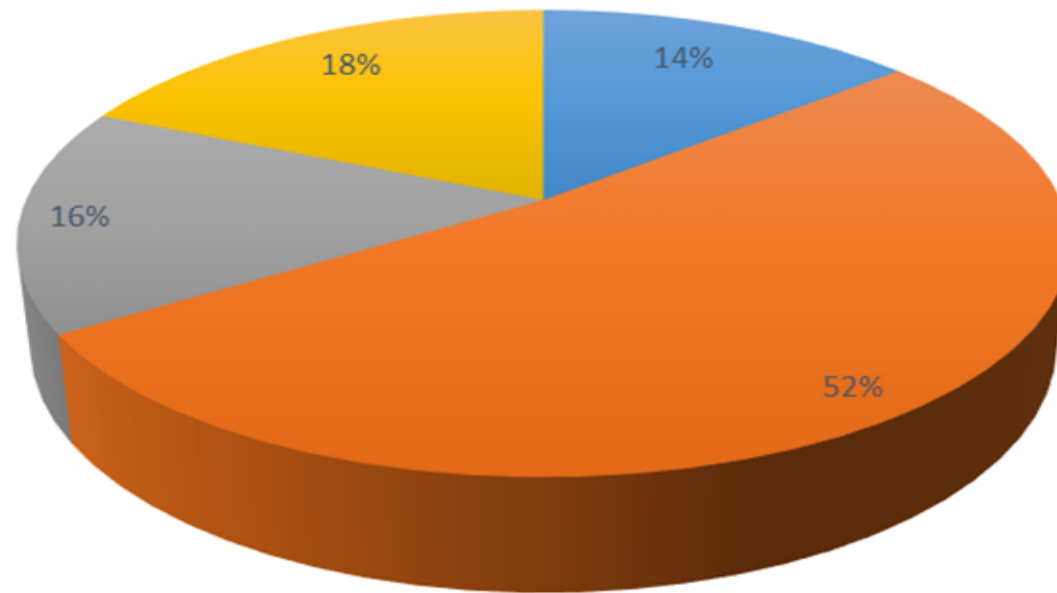
	FY 2016	FY 2017	FY 2018
<b>Total</b>	<b>\$24,1790,849</b>	<b>\$25,663,504</b>	<b>\$26,7673,179</b>
Personnel	\$ 3,523,980	\$ 4,071,277	\$ 4,371,255
Operating	15,332,740	14,838,000	15,925,423
Capital	275,000	478,225	485,500
Transfers	5,659,129	6,276,002	5,891,001
Staffing	52	52	59

# USD Revenues by Category



■ Water System   ■ Wastewater System   ■ Investment Income   ■ Other Charges for Services

## USD Expenses by Category



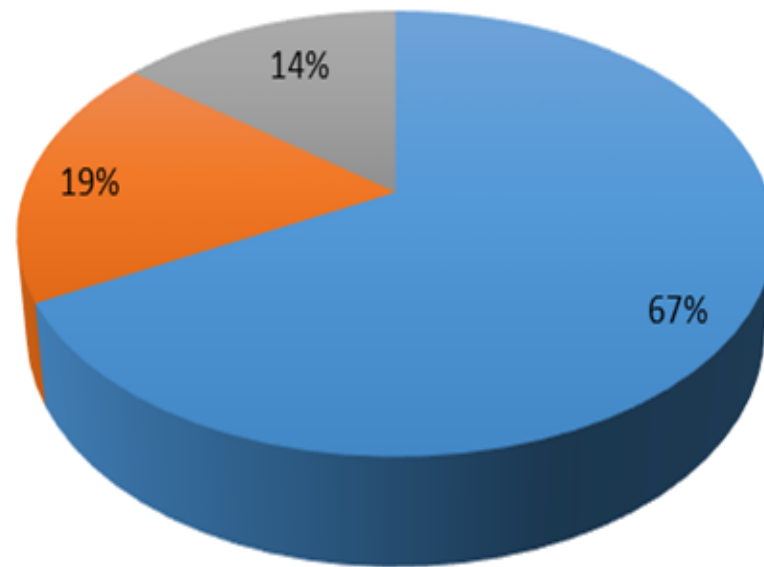
■ Personnel ■ Operating ■ ECR Transfers ■ Debt Service

# Utility Special District – Capital Projects

Project Title	Asset Category	Priority	FY 2018	5-Year Total
Utility Special District				
Aerial Crossing Rehabilitation	Equipment	1	1,000,000	1,000,000
Lift Station #10 & 50 Rehabilitation	Water & Wastewater System	1	1,626,900	1,857,662
Lift Station #47 Rehabilitation	Water & Wastewater System	1	400,000	4,717,000
Lime System Replacement	Water & Wastewater System	1	2,240,926	3,894,876
Parallel Intracoastal Water Main	Water & Wastewater System	1	-	3,193,000
Raw Water Wells Rehabilitation	Water & Wastewater System	1	175,000	575,000
SCADA Replacement	Technology	1	40,000	40,000
Water and Wastewater Improvements	Water & Wastewater System	1	8,000,000	8,000,000
Underground Contractor On-Call	Water & Wastewater System	1	200,000	781,000
Water Meters	Water & Wastewater System	1	625,000	3,750,000
Water Storage Tank Inspection	Water & Wastewater System	1	-	81,750
Water Treatment Plant Disinfection	Water & Wastewater System	1	2,043,657	4,200,000
Aqueous Ammonia System	Water & Wastewater System	2	50,000	513,500
Avenue U Pump Disinfection	Water & Wastewater System	2	200,000	200,000
Haverhill Road Improvement	Water & Wastewater System	2	50,000	550,000
Lift Station Rehabilitation - Phase 1	Water & Wastewater System	2	500,000	2,015,000
Media and Underdrain Replacement	Water & Wastewater System	2	618,000	2,472,000
Raw Water Wells A & B	Water & Wastewater System	2	-	2,260,000
Sanitary Sewer System Relining	Water & Wastewater System	2	100,000	713,000
Silver Beach Road Improvement	Water & Wastewater System	2	200,000	200,000
Utility Infrastructure in NSA	Water & Wastewater System	2	135,700	678,500
Water Treatment Plant Generators	Equipment	2	100,000	2,121,000
Fire Hydrant Replacement	Water & Wastewater System	3	-	260,500
Garden Road Improvement	Water & Wastewater System	3	138,985	138,985
Ground Water Sanitary Survey	Water & Wastewater System	3	100,500	100,500
Lift Station #48 Culvert	Water & Wastewater System	3	50,000	50,000
Lift Station Pump Replacement	Water & Wastewater System	3	365,000	365,000
Lift Station Rehabilitation - Phase 2	Water & Wastewater System	3	500,000	2,180,000
North Tower Building Replacement	City Facility	3	1,000,000	1,000,000
Parallel Intracoastal Force Main	Water & Wastewater System	3	-	7,130,000
Perimeter Wall - WTP	City Facility	3	505,000	1,505,000
Softening Units Replacement	Water & Wastewater System	3	3,253,000	3,253,000
Utility Field Operations Building	City Facility	3	100,000	1,133,000
Water Mains- PB Shores	Water & Wastewater System	3	90,000	431,529
Water Mains- PB Shores	Water & Wastewater System	3	-	567,471
WTP Enhancements	City Facility	3	500,000	500,000
		<b>Grand Total USD</b>	<b>24,907,668</b>	<b>62,428,273</b>

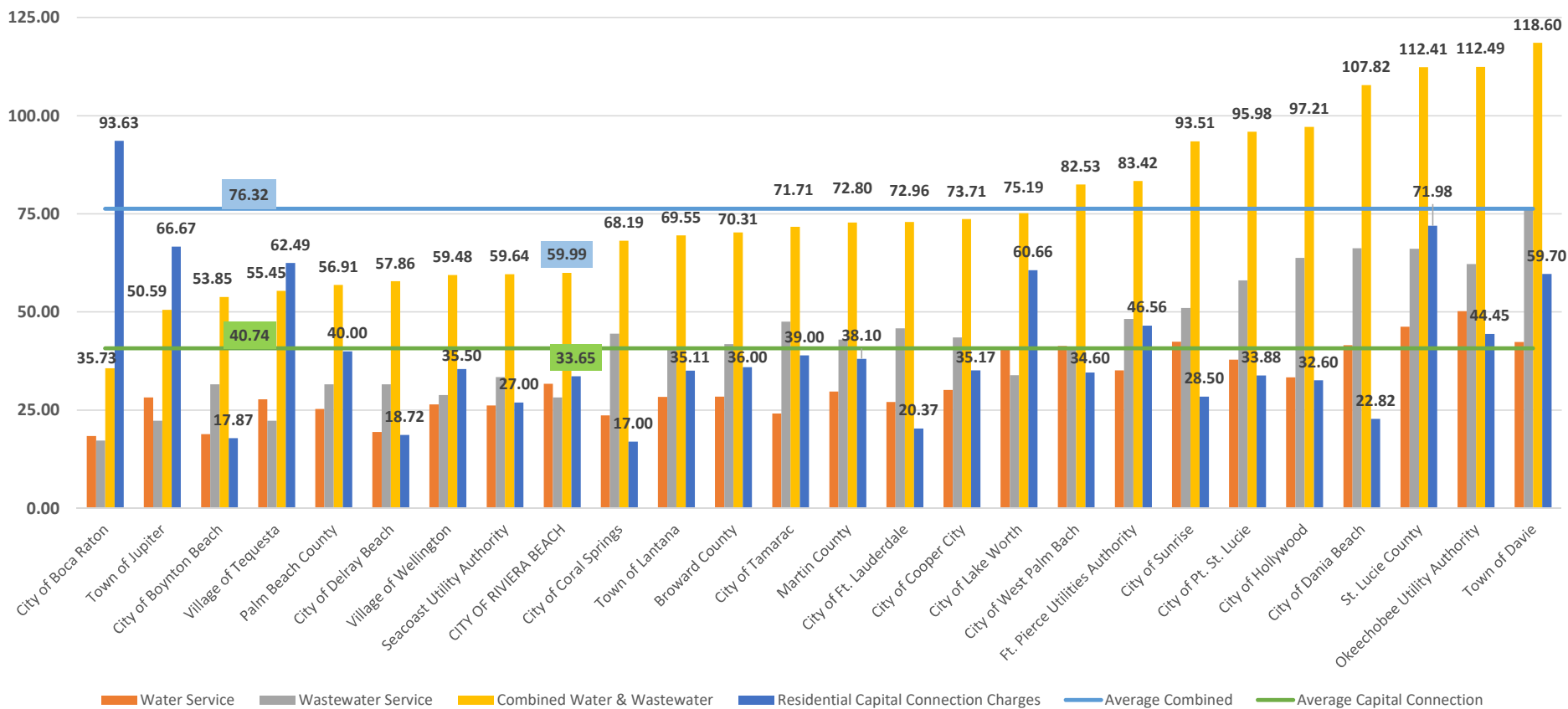


## USD Flow of Funds

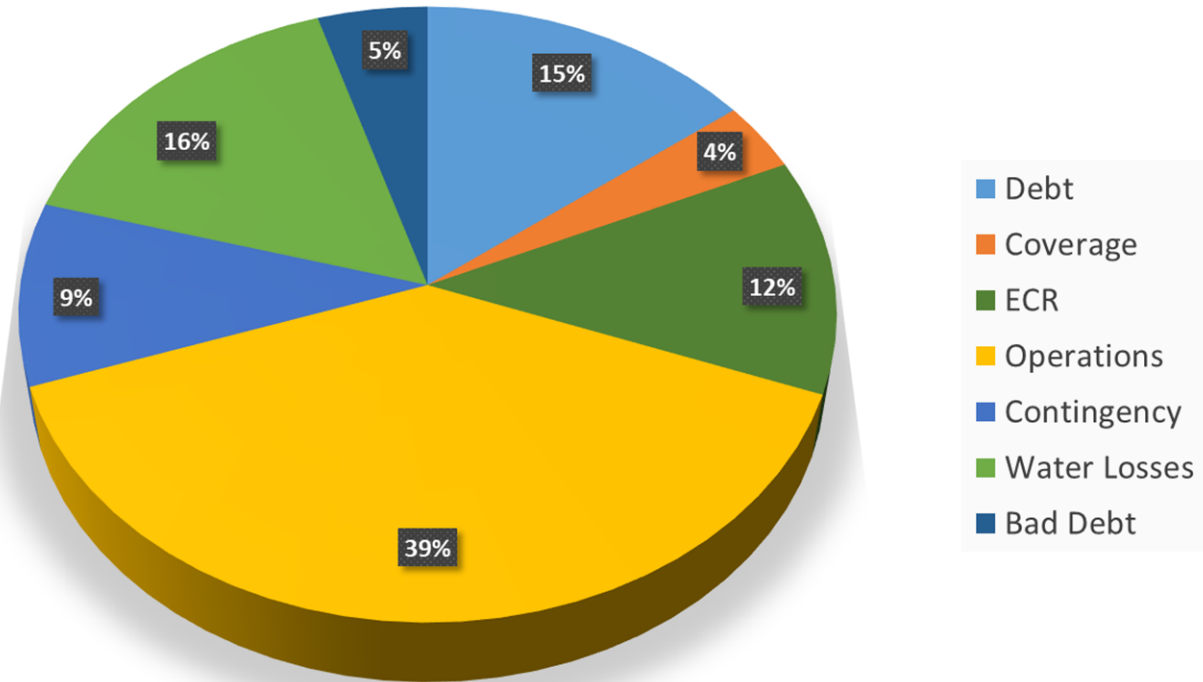


■ Operations and Maintenance   ■ Debt Service   ■ Required Transfers

Utility Rates  
 Comparison Residential Water and Sewer Bills at 6,000 gallons  
 Connection Fees shown at 1/100th of Rate



Utility Bill Composition



# ECR Cost Allocations

<b>Fiscal Year</b>	<b>Wastewater Capacity Entitlement (MGD)</b>	<b>Percent of Total</b>	<b>Average Percentage of Flow</b>
Palm Beach County	24.0	34.2857%	34.3105%
West Palm Beach	20.5	29.2857%	30.1286%
City of Lake Worth	12.5	16.4286%	18.7195%
City of Riviera Beach	8.0	11.4286%	11.5894%
Town of Palm Beach	5.0	8.5714%	5.2520%
<b>Totals</b>	<b>70.0</b>	<b>100.0%</b>	<b>100.0%</b>