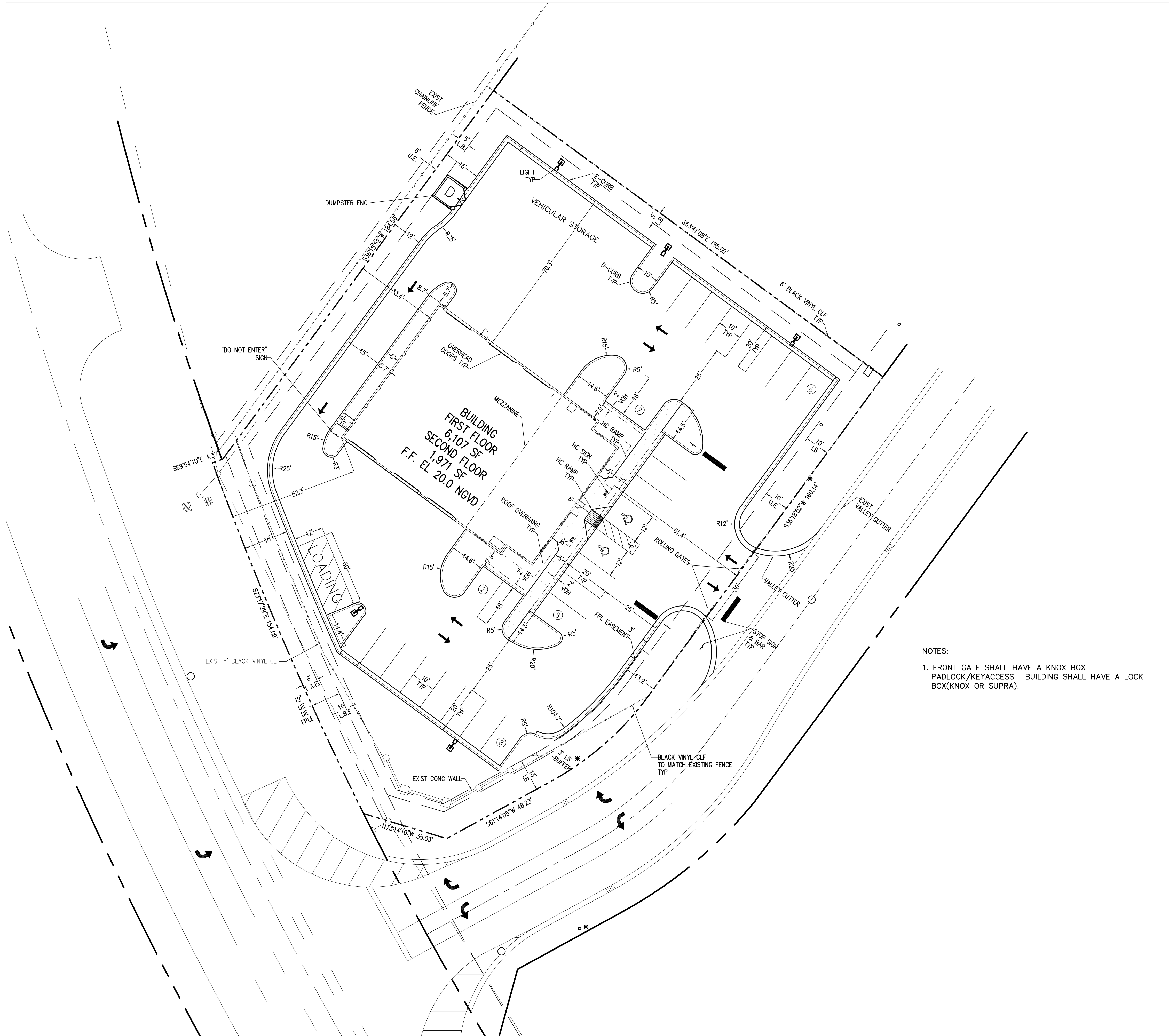
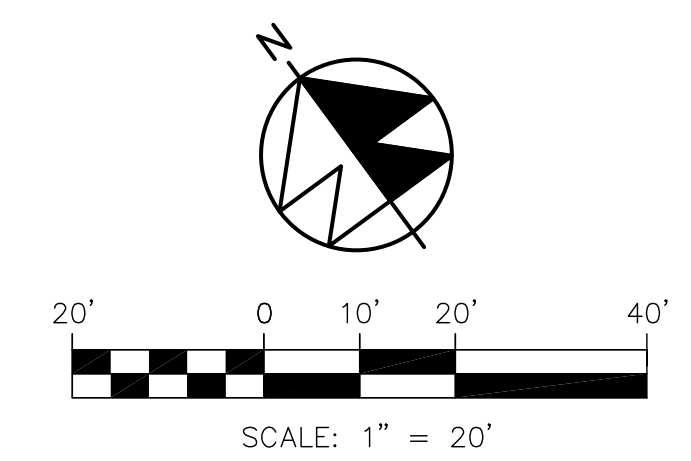
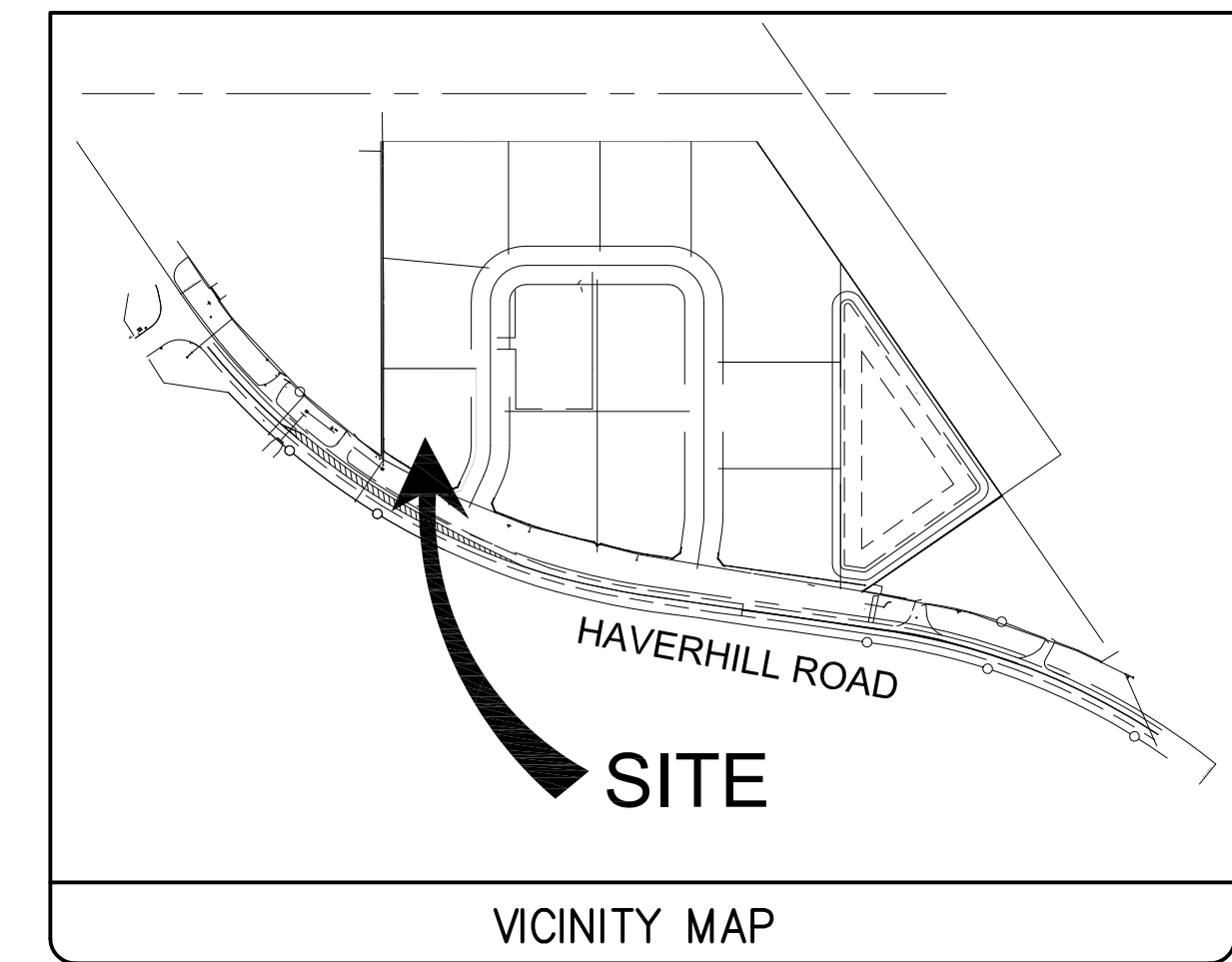


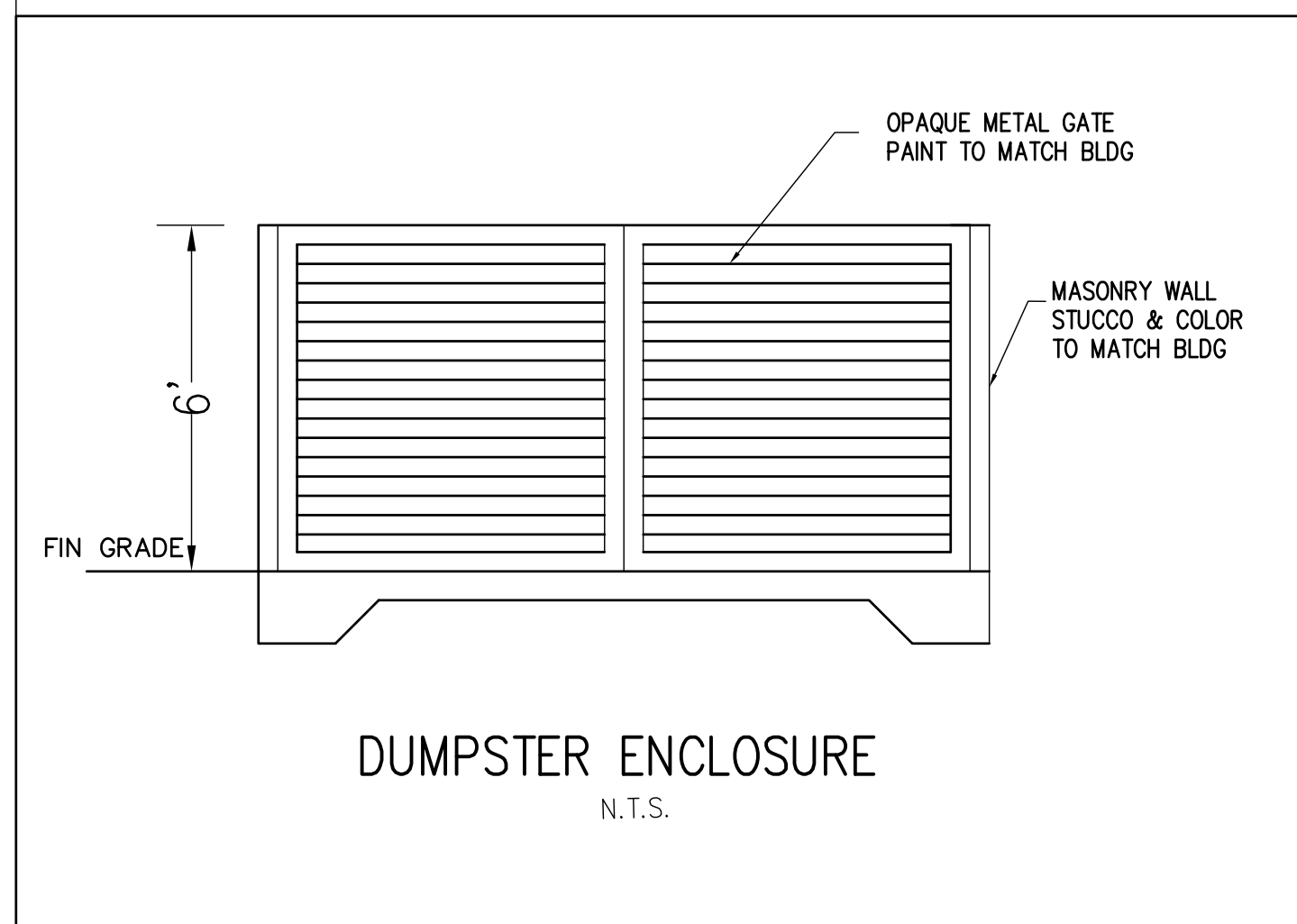
EXHIBIT A



NOTES:
 1. FRONT GATE SHALL HAVE A KNOX BOX PADLOCK/KEYACCESS. BUILDING SHALL HAVE A LOCK BOX(KNOX OR SUPRA).



SITE DATA			
PROPOSED USE	INDUSTRIAL		
ZONING	IG		
FUTURE LAND USE	INDUSTRIAL		
PCN	56-42-42-260-2000-0010		
SECTION 33, TOWNSHIP 42S, RANGE 43E			
LOT AREA NET	45,233 SF	1.04 AC	100.0%
BUILDING COVERAGE	6,107 SF	0.14 AC	13.5%
PAVT/SW	25,592 SF	0.59 AC	56.6%
IMPERVIOUS AREA	31,699 SF	0.73 AC	70.1%
PERVIOUS AREA	13,534 SF	0.31 AC	29.9%
GROSS FLOOR AREA	8,078 SF		
BLDG HEIGHT LIMIT	35 FT MAX		
BLDG HEIGHT PROPOSED	27'-4" FT		
PARKING REQ	AREA	RATE	REQ'D
OFFICE	1,971 SF	1 PER 300 SF	7 PS
WAREHOUSE	4,136 SF	1 PER 1000 SF	6 PS
MEZZANINE/STORAGE	1,971 SF	1 PER 1000 SF	2 PS
			15 PS
			REQ'D
			27
			2
			2
FRONT SETBACK (MINIMUM)	= 40 FEET		
REAR SETBACK (MINIMUM)	= 20 FEET		
SIDE SETBACK (MINIMUM)	= 15 FEET		



REVISIONS
12-07-2016 REV PER CITY

Jeff H. Iravani, Inc.
 Consulting Engineers
 1934 COMMERCE LANE, SUITE 5
 JUPITER, FLORIDA 33458
 TEL: (561) 575-6030
 FAX: (561) 575-6088
 www.jhinc.com
 jh@jhsouth.net

Catoe & Son Plumbing, Inc.
 Haverhill Industrial Park Lot-1
 Riviera Beach, Florida

SITE PLAN	
DATE	07/12/2016
SCALE	1/20
DESIGNED BY	JHI
DRAWN BY	JBI

SEAL
JEFF H. IRAVANI, PE FL REG #33155 CDA #6986 JOB NO.
1606-1188 SHEET NO.
SP-1