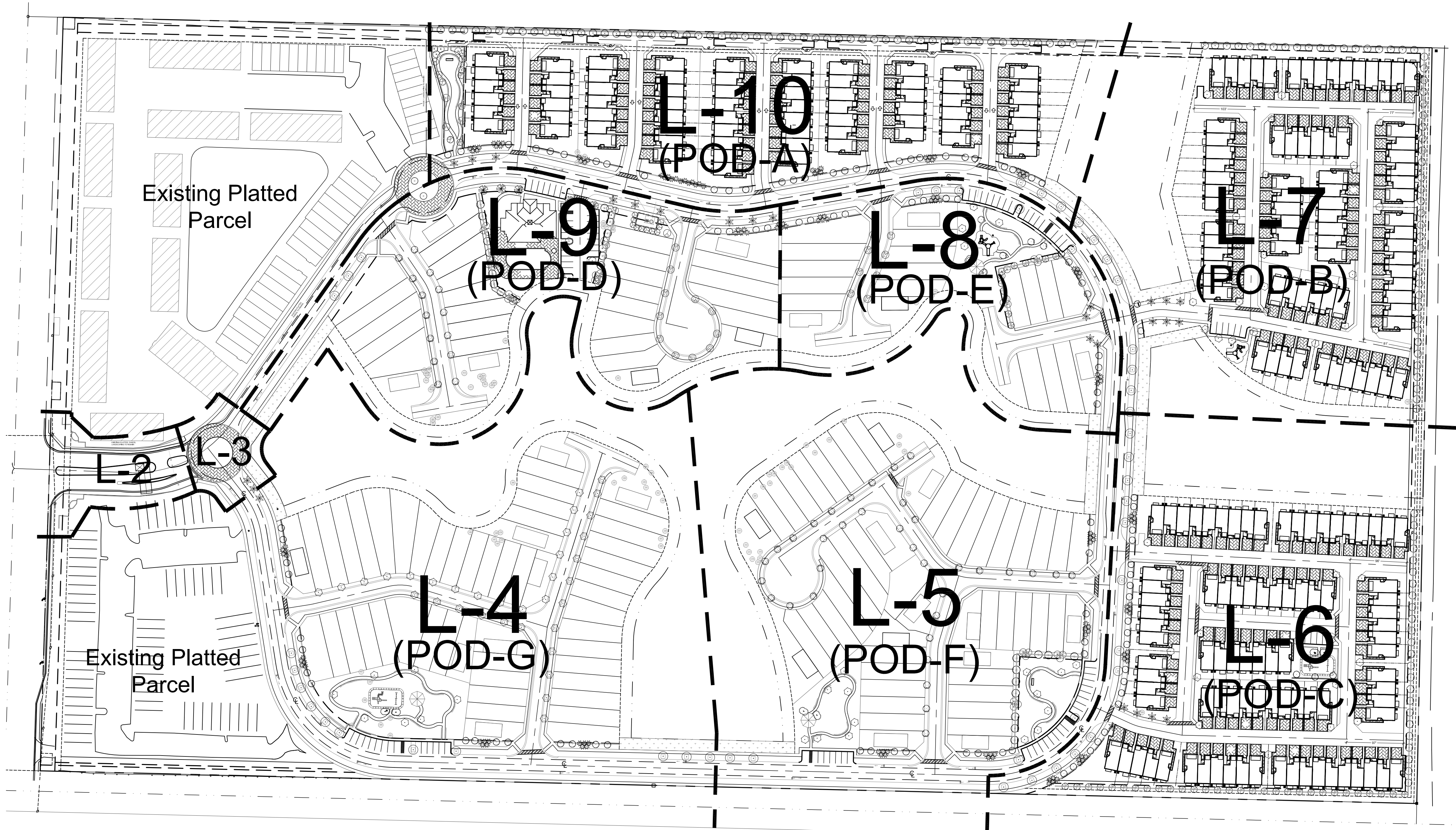


KEY PLAN

Scale: NTS



SHEET INDEX:

- L-1 INDEX
- L-1A LANDSCAPE LEGEND & TABLES
- L-2 FRONT ENTRANCE ENHANCEMENT LANDSCAPE PLAN
- L-3 FRONT ENTRANCE ENHANCEMENT LANDSCAPE PLAN
- L-4 POD - G OVERALL LANDSCAPE PLAN
- L-5 POD - F OVERALL LANDSCAPE PLAN
- L-6 POD - C OVERALL LANDSCAPE PLAN
- L-7 POD - B OVERALL LANDSCAPE PLAN
- L-8 POD - E OVERALL LANDSCAPE PLAN
- L-9 POD - D OVERALL LANDSCAPE PLAN
- L-10 POD - A OVERALL LANDSCAPE PLAN
- L-11 TYPICAL SINGLE FAMILY UNIT A LANDSCAPE PLAN
- L-12 TYPICAL SINGLE FAMILY UNIT B LANDSCAPE PLAN
- L-13 TYPICAL SINGLE FAMILY UNIT C LANDSCAPE PLAN

- L-14 TYPICAL SINGLE FAMILY UNIT D LANDSCAPE PLAN
- L-15 TYPICAL SINGLE FAMILY UNIT E LANDSCAPE PLAN
- L-16 TYPICAL SINGLE FAMILY UNIT F LANDSCAPE PLAN
- L-17 TYPICAL 4 UNIT TOWNHOUSE LANDSCAPE PLAN
- L-18 TYPICAL 5 UNIT TOWNHOUSE LANDSCAPE PLAN
- L-19 TYPICAL 6 UNIT TOWNHOUSE LANDSCAPE PLAN
- L-20 TYPICAL 7 UNIT TOWNHOUSE LANDSCAPE PLAN
- L-21 TYPICAL 8 UNIT TOWNHOUSE LANDSCAPE PLAN
- L-22 TYPICAL 9 UNIT TOWNHOUSE LANDSCAPE PLAN
- L-23 TYPICAL 10 UNIT TOWNHOUSE LANDSCAPE PLAN
- L-24 LANDSCAPE DETAILS

**Invasive Exotic Note:** All Invasive exotic plants shall be removed from the location as part of the site preparation process.

**Maintenance Note:** Landscaping shall be maintained according to the approved site plan.

**Root Barriers Note:** Landscape contractor shall use root barriers or ensure reasonable horizontal separation between plants and water and sewer lines based on plant size and or root zone expansion capacity.

OVERALL LANDSCAPE LIST

SYMBOL	QUAN.	PROPOSED MATERIAL	DESCRIPTION	IDENTIFICATION
VA	35	VERAWOOD	12 HT. X 9" DBH. F.O.	SHADE TREE
CB	99	Caladium transferian	12 HT. X 9" DBH. F.O.	SHADE TREE
CR	102	BRACELAND BEAUTIFUL LEAF	12 HT. X 9" DBH. F.O.	SHADE TREE
CC	30	Coccoloba diversiflora	12 HT. X 9" DBH. F.O.	SHADE TREE
CS	2	GREEN MANTON COCONUT PALM	8' GW. HEIGHT	3 PALMS TO 1 SHADE TREE
CC	23	CONCARPUS ERUCUS	12 HT. X 9" DBH. F.O.	SHADE TREE
CS	129	CONCARPUS ERUCUS	12 HT. X 9" DBH. F.O.	SHADE TREE
LI	10	LIBURNIA JAPONICA	8 HT. X 10" DBH. MULTI TRUNK	ACCENT TREE
ES	5	ELAEAGNUS	12 FT. C.T.	3 PALMS TO 1 SHADE TREE
RE	47	ROYAL PALM	12 HT. X 9" DBH. F.O.	SHADE TREE
RE	27	ROYAL PALM	20-22 D.A. HT. 6' GREYWOOD	3 PALMS TO 1 SHADE TREE
SP	50	SILVER DATE PALM	15-20' D.A. HT. STAGGERED	3 PALMS TO 1 SHADE TREE
TH	54	Tabebuia heterophylla	12 HT. X 9" DBH. F.O.	SHADE TREE
VM	147	VANILLA HORTENSIOIDES	18' C.A. HT. MIN.	3 PALMS TO 1 SHADE TREE
VM2	8	VANILLA HORTENSIOIDES	27' C.A. HT. MIN. DOUBLE	3 PALMS TO 1 SHADE TREE

SYMBOL	QUAN.	PROPOSED MATERIAL	DESCRIPTION
AB	15	Andropogon glaucus	36" HT. X 24" SPR.
CE	2852	GREEN BUTTWOOD	36" HT. X 24" SPR. 24" O.C.
CG	57	GREEN BUTTWOOD	7 GAL.
FM	560	FLORICORNIS	18" HT. X 18" SPR. 18" O.C.
JV	44	JASMINE	3 GAL.
SV	1391	SCHIFFERELLA	36" HT. X 24" SPR. 24" O.C.
TF	54	TROPICAN BIRD	24" HT. X 24" SPR. 24" O.C.
LAWN	As	St. Augustine Grass	SOLID EVEN SOO
BAHIA	As	Bahia Grass	SOLID EVEN SOO

⊙ Tree to Remain

RIVIERA BEACH LANDSCAPE REQUIREMENTS  
Open Space Provided= 32.63 Acres(1,421,362.8 s.f.)

CODE REQUIREMENT	Lineal Feet or Square Feet.	Amount or % of Planting Required	Amount or % of Planting Provided
Perimeter Buffers (POD A): 1 Shade Tree Per 20 Lf., continuous 3' ht. hedge	2,223 Lf. (north/south side)	112(67 NATIVE)	132(90 NATIVE)
Trees			
Shrubs		1004(700 NATIVE)	1451(836 NATIVE)
Perimeter Buffers (POD B): 1 Shade Tree Per 20 Lf., continuous 3' ht. hedge	976 Lf. (north/east side)	49(30 NATIVE)	60(49 NATIVE)
Trees			
Shrubs		496(347 NATIVE)	496(496 NATIVE)
Perimeter Buffers (POD C): 1 Shade Tree Per 20 Lf., continuous 3' ht. hedge	1610 Lf. (south/east/ west side)	81(49 NATIVE)	93(54 NATIVE)
Trees			
Shrubs		805(563 NATIVE)	1,042(797 NATIVE)
Perimeter Buffers (POD D): 1 Shade Tree Per 20 Lf., continuous 3' ht. hedge	611 Lf. (clubhouse/north side)	31(19 NATIVE)	41(23 NATIVE)
Trees			
Shrubs		305(213 NATIVE)	336(229 NATIVE)
Perimeter Buffers (POD E): 1 Shade Tree Per 20 Lf., continuous 3' ht. hedge	753 Lf. (north/east/ park side)	38(23 NATIVE)	45(30 NATIVE)
Trees			
Shrubs		376( 224 NATIVE)	412(247 NATIVE)
Perimeter Buffers (POD F): 1 Shade Tree Per 20 Lf., continuous 3' ht. hedge	633 Lf. (south/east side)	32(19 NATIVE)	38(26 NATIVE)
Trees			
Shrubs		316(221 NATIVE)	316(137 NATIVE)
Perimeter Buffers (POD G): 1 Shade Tree Per 20 Lf., continuous 3' ht. hedge	392 Lf. (south/east side)	20(12 NATIVE)	26(18 NATIVE)
Trees			
Shrubs		196(137 NATIVE)	360(273 NATIVE)
Multi-Family (1 per 1500 s.f. continuous hedge around building)	236 UNITS	321(193 NATIVE)	321(236 NATIVE)
Trees(1 tree per 1500 s.f.)			
Shrubs(continuous hedge)		3,909(2,736 NATIVE)	3,909(2,887 NATIVE)
Single Family (1 per 1500 s.f. continuous hedge around building)	152 UNITS		
Trees(1 Tree Per 2500 s.f. of lot area. 1 shade in front and back)		304(182 NATIVE)	304(154 NATIVE)
Shrubs(6 per 2500 s.f. of lot area)		1,064(744 NATIVE)	2,123(1,216 NATIVE)
Street Trees (1 per 40 Lf.)	6440 Lf.	161(97 NATIVE)	161(64 NATIVE)
Remaining Trees			64(64 NATIVE)
Total Trees(60% Native)		1,149 (691 NATIVE) (60% NATIVE)	1,285(808 NATIVE) (63% NATIVE)
Total Shrubs(70% Native)		8,275(5,793 NATIVE) (70.1% NATIVE)	10,415(7,118 NATIVE) (68.3% NATIVE)

WITKIN HULTS DESIGN GROUP  
307 South 21st Avenue Hollywood, Florida  
phone: 954.923.9681 facsimile: 954.923.9689  
www.witkindesign.com

Mediterranea  
Riviera Beach, Florida  
INDEX

Revisions: Date: By:

11 City Comments	02/27/2016	JC
21 City Comments	10/28/2016	JC

Seat:

Lic. # LA0000889  
Member: A.S.L.A.

Drawing: INDEX  
Date: 02/02/2016  
Scale: See Left  
Drawn by: DC  
Sheet No.:  
Cad Id.: 2016-013

L-1

\*\* 83 REMAINING TREES INCLUDE 28 PALMS AND 55 TREES, WHICH EQUAL TO 64 TREES (3 PALMS TO 1 TREE). ALL TREES ARE NATIVE SPECIES.



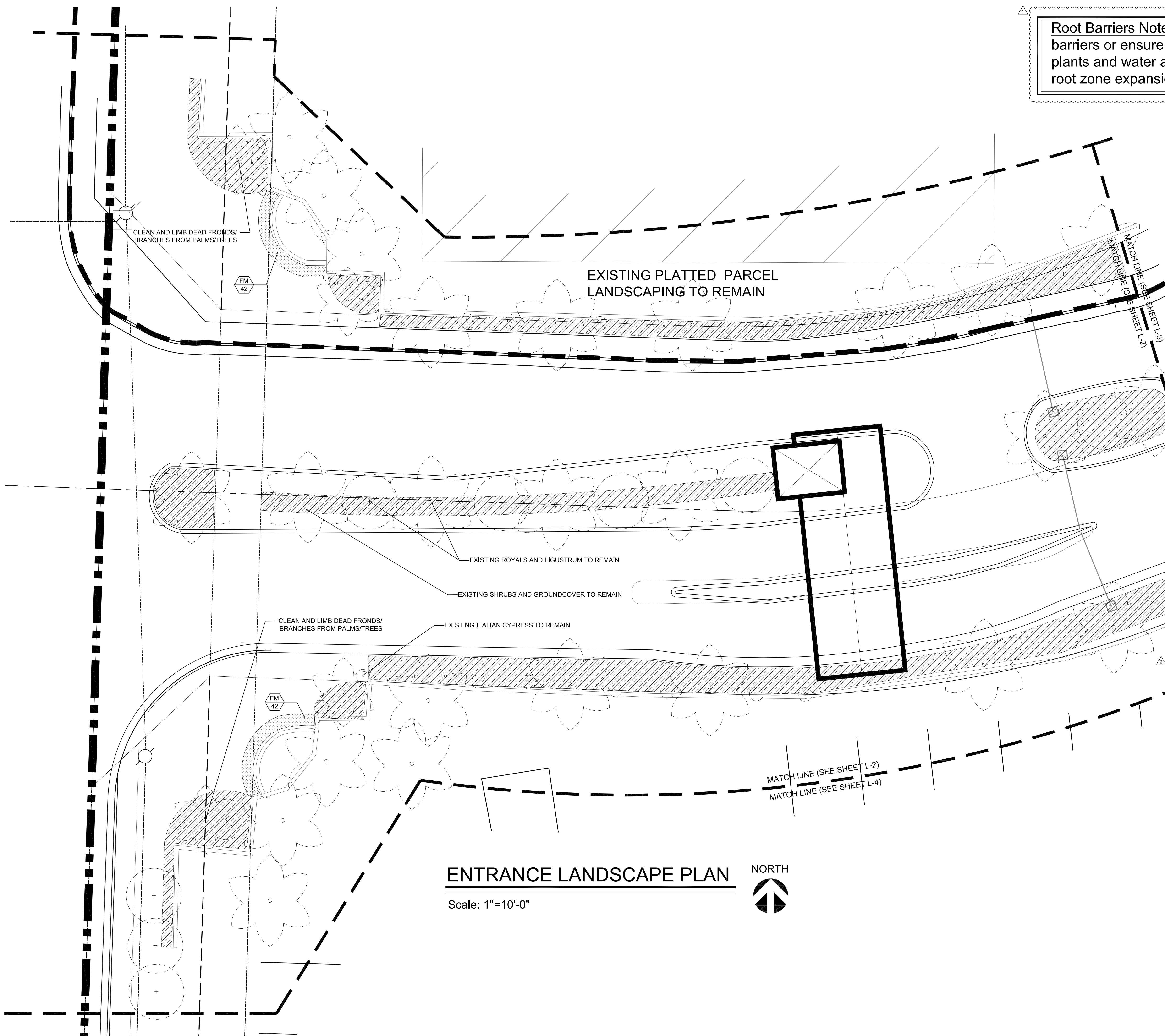
**Root Barriers Note:** Landscape contractor shall use root barriers or ensure reasonable horizontal separation between plants and water and sewer lines based on plant size and or root zone expansion capacity.

**Invasive Exotic Note:** All Invasive exotic plants shall be removed from the location as part of the site preparation process.

**Maintenance Note:** Landscaping shall be maintained according to the approved site plan.

**WITKIN HULTS DESIGN GROUP**  
 307 South 21st Avenue Hollywood, Florida  
 Phone: 954.923.9681 Facsimile: 954.923.9689  
 www.witkindesign.com

**Mediterranea**  
 Riviera Beach, Florida  
**FRONT ENTRANCE ENHANCEMENT LANDSCAPE PLAN**



**OVERALL LANDSCAPE LIST**

TREES				
SYMBOL	QUAN.	PROPOSED MATERIAL	DESCRIPTION	IDENTIFICATION
RA	35	Burhodia arborea	12' HT. X 5' SPR. 2" DBHL	SHADE TREE
YB		YEW/WOOD	F.G. 6" CLEAR TRUNK	
CB	99	Calophyllum bromeliifera	12' HT. X 5' SPR. 2" DBHL	SHADE TREE
		BRAZILIAN BEAUTYLEAF	F.G. 6" CLEAR TRUNK	
CD	102	*Coccoloba diversiflora	12' HT. X 5' SPR. 2" DBHL	SHADE TREE
		PIGEON PLUM	F.G. 6" CLEAR TRUNK	
CR	30	*Cordia missouriensis	12' HT. X 5' SPR. 2" DBHL	SHADE TREE
		PITCH APPLE	F.G. 6" CLEAR TRUNK	
CN	2	Cocos nucifera 'Mayan'	8' GW. HEIGHT	3 PALMS TO 1 SHADE TREE
		GREEN MAYPAN COCONUT PALM	F.G.	
CO	23	*Conocarpus erectus	12' HT. X 5' SPR. 2" DBHL	SHADE TREE
		GREEN BUTTOWOOD	F.G. 6" CLEAR TRUNK	
CS	129	*Conocarpus erectus 'serotinus'	12' HT. X 5' SPR. 2" DBHL	SHADE TREE
		SILVER BUTTOWOOD	F.G. 6" CLEAR TRUNK	
LI	10	Ligustrum japonicum	8' HT. X 10' SPR. MULTI TRUNK	ACCENT TREE
		JAPANESE PRIVET	F.G.	
PS	5	Phoenix subulata	10' C.T.	3 PALMS TO 1 SHADE TREE
		SILVER DATE PALM	F.G.	
QV	47	*Quercus virginiana	12' HT. X 5' SPR. 2" DBHL	SHADE TREE
		LIVE OAK	F.G. 6" CLEAR TRUNK	
RE	27	*Ravennia nitida	20-22' O.A. HT. 6" GREYWOOD	3 PALMS TO 1 SHADE TREE
		ROYAL PALM	F.G. MATCHED HTS.	
SP	50	*Sabal palmetto	16-20' O.A. HT. STAGGERED	3 PALMS TO 1 SHADE TREE
		SABAL PALM	F.G.	
TH	54	*Tabebuia heterophylla	12' HT. X 5' SPR. 2" DBHL	SHADE TREE
		PINK TRUMPET TREE	F.G. 6" CLEAR TRUNK	
VM	147	Viburnum montgomeryana 'ingle'	18' O.A. HT. MIN.	3 PALMS TO 1 SHADE TREE
		SINGLE MONTGOMERY PALM	F.G.	
VM2	8	Viburnum montgomeryana 'issoube'	20' O.A. HT. MIN. DOUBLE	3 PALMS TO 1 SHADE TREE
		DOUBLE MONTGOMERY PALM	F.G. STAGGERED.	
SHRUBS AND GROUNDCOVERS				
SYMBOL	QUAN.	PROPOSED MATERIAL	DESCRIPTION	
AB	15	Aechmea blanchetiana	30" HT. X 24" SPR.	
		BRIGHT YELLOW BROMELIAD	10" POT	
CE	2852	*Conocarpus erectus	30" HT. X 24" SPR./24" O.C.	
		GREEN BUTTOWOOD	7 GAL.	
CG	57	*Clusia guineensis	24" HT. X 24" SPR./24" O.C.	
		SMALL LEAF CLUSIA	3 GAL.	
FM	560	Ficus microcarpa 'Green Island'	18" HT. X 15" SPR./15" O.C.	
		GREEN ISLAND FIGUS	3 GAL.	
JV	44	Jasminum vulgare	24" HT. X 24" SPR./24" O.C.	
		WAX JASMINE	3 GAL.	
SV	1391	Schefflera arboricola	30" HT. X 24" SPR./24" O.C.	
		GREEN SCHEFFLERA	3 GAL.	
TF	54	*Tripsacum daniellii	24" HT. X 24" SPR./24" O.C.	
		DWARF FAKA WAXICHE GRASS	3 GAL.	
LAWN	As Required	Sternotaphrum secundatum 'Floristan'	SOLID EVEN SOD	
		ST. AUGUSTINE GRASS		
BAHIA	As Required	Paspalum notatum	SOLID EVEN SOD	
		ARGENTINE BAHIA GRASS		

☉ DENOTES NATIVE SPECIES

☉ Tree to Remain

**Revisions:**

1. City Comments	Date:	By:
2. City Comments	02/27/2016	JC
	10/28/2016	JC

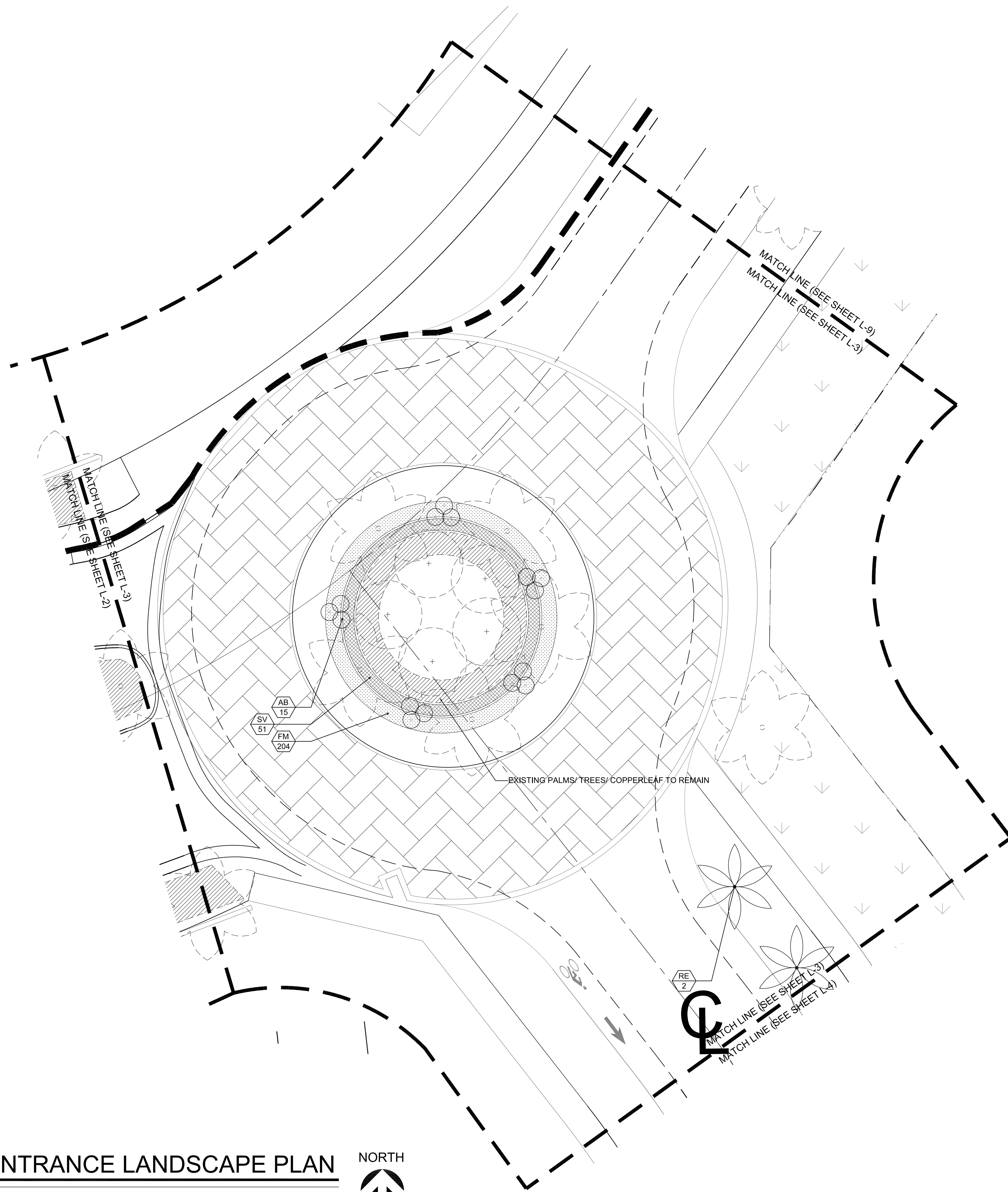
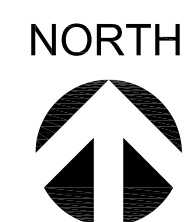
Seat:

Lic. # LA0000889  
 Member: A.S.L.A.

Drawing: Entrance Landscape Plan  
 Date: 02/02/2016  
 Scale: See Left  
 Drawn by: DC  
 Sheet No.:  
 Cad Id.: 2016-013

# ENTRANCE LANDSCAPE PLAN

Scale: 1"=10'-0"



OVERALL LANDSCAPE LIST

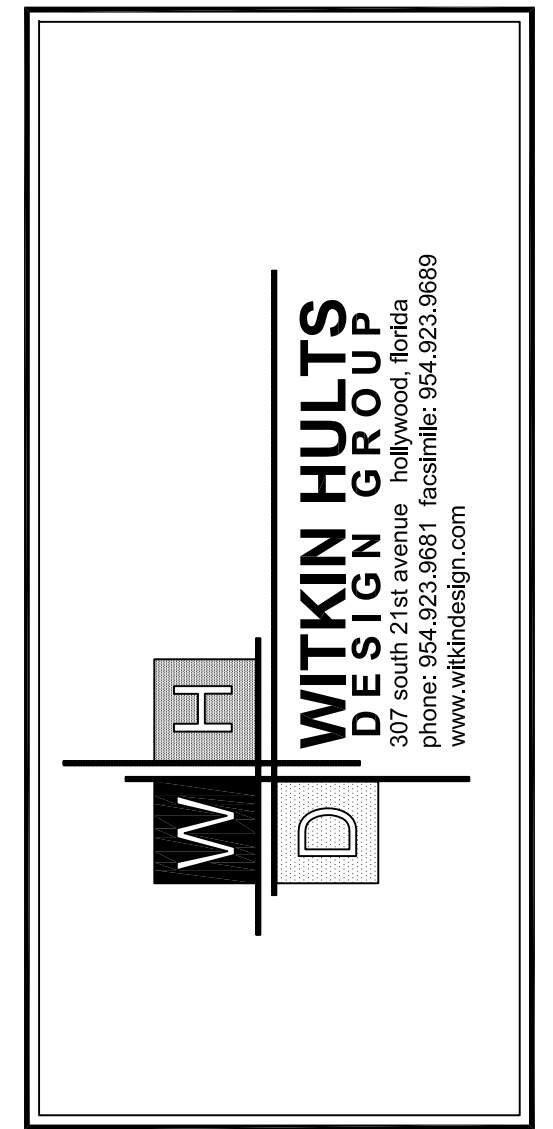
TREES				
SYMBOL	QUAN.	PROPOSED MATERIAL	DESCRIPTION	IDENTIFICATION
RA	35	Butea arborosa VERAWOOD	12 HT. X 5' SPR. 2" DBH. F.G., 6' CLEAR TRUNK	SHADE TREE
CB	99	Calophyllum brasiliense BROSLIAN BEAUTYLEAF	12 HT. X 5' SPR. 2" DBH. F.G., 6' CLEAR TRUNK	SHADE TREE
CD	102	*Coccoloba diversiflora PIGEON PLUM	12 HT. X 5' SPR. 2" DBH. F.G., 6' CLEAR TRUNK	SHADE TREE
CR	30	*Clusia rosea	12 HT. X 5' SPR. 2" DBH. F.G., 6' CLEAR TRUNK	SHADE TREE
CR		PEACH APPLE	F.G.	
CN	2	Coconu nucifera 'Maypan' GREEN MAYPAN COCONUT PALM	8' QW. HEIGHT F.G.	3 PALMS TO 1 SHADE TREE
CO	23	*Conocarpus erectus GREEN BUTTWOOD	12 HT. X 5' SPR. 2" DBH. F.G., 6' CLEAR TRUNK	SHADE TREE
CS	129	*Conocarpus erectus 'variegatus' SILVER BUTTWOOD	12 HT. X 5' SPR. 2" DBH. F.G., 6' CLEAR TRUNK	SHADE TREE
LJ	10	Ligustrum japonicum JAPANESE PRIVET	8 HT. X 10' SPR. MULTI TRUNK F.G.	ACCENT TREE
PS	5	Propolis yvesensis SILVER DATE PALM	10' C.T. F.G.	3 PALMS TO 1 SHADE TREE
QV	47	*Quercus virginiana LIVE OAK	12 HT. X 5' SPR. 2" DBH. F.G., 6' CLEAR TRUNK	SHADE TREE
RE	27	*Royaletia elata ROYAL PALM	20-22' O.A. HT., 6" GREYWOOD F.G. MATCHED HTS.	3 PALMS TO 1 SHADE TREE
SP	50	*Sabal palmato SABAL PALM	16-20' O.A. HT. STAGGERED F.G.	3 PALMS TO 1 SHADE TREE
TH	54	Tabebuia heterophylla PINK TRUMPET TREE	12 HT. X 5' SPR. 2" DBH. F.G., 6' CLEAR TRUNK	SHADE TREE
VM	147	*Velechia montgomeryana 'single' SINGLE MONTGOMERY PALM	18' O.A. HT. MIN. F.G.	3 PALMS TO 1 SHADE TREE
VM2	8	*Velechia montgomeryana 'double' DOUBLE MONTGOMERY PALM	20' O.A. HT. MIN. DOUBLE F.G. STAGGERED.	3 PALMS TO 1 SHADE TREE
SHRUBS AND GROUNDCOVERS				
SYMBOL	QUAN.	PROPOSED MATERIAL	DESCRIPTION	
AB	15	Aechmea blanchetiana BRIGHT YELLOW BROMELIAD	30" HT. X 24" SPR.	
CE	2852	*Conocarpus erectus GREEN BUTTWOOD	10" POT 30" HT. X 24" SPR./24" O.C. 7 GAL.	
CG	57	*Clusia guttata SMALL LEAF CLISIA	24" HT. X 24" SPR. / 24" O.C. 3 GAL.	
FM	560	Ficus microcarpa 'Green Island' GREEN ISLAND FIGUS	15" HT. X 15" SPR. / 15" O.C. 3 GAL.	
JV	44	Jasminum volubile WAX JASMINE	24" HT. X 24" SPR. / 24" O.C. 3 GAL.	
SV	1391	Schefflera arborescens GREEN SCHEFFLERA	30" HT. X 24" SPR. / 24" O.C. 3 GAL.	
TF	54	*Tripsacum floridanum DWARF FAKANATCHEE GRASS	24" HT. X 24" SPR. / 24" O.C. 3 GAL.	
LAWN	As Required	Stenotaphrum secundatum 'Karatana' ST. AUGUSTINE GRASS	SOLID EVEN SOO	
BAHIA	As Required	Paspalum notatum ARGENTINE BAHIA GRASS	SOLID EVEN SOO	

Tree to Remain

**Invasive Exotic Note:** All Invasive exotic plants shall be removed from the location as part of the site preparation process.

**Maintenance Note:** Landscaping shall be maintained according to the approved site plan.

**Root Barriers Note:** Landscape contractor shall use root barriers or ensure reasonable horizontal separation between plants and water and sewer lines based on plant size and or root zone expansion capacity.



**Mediterranea**  
Riviera Beach, Florida  
FRONT ENTRANCE ENHANCEMENT LANDSCAPE PLAN

Revisions: Date: By:

11 City Comments	02/27/2016	JC
21 City Comments	10/28/2016	JC

Seat:

Lic. # LA0000889  
Member: A.S.L.A.

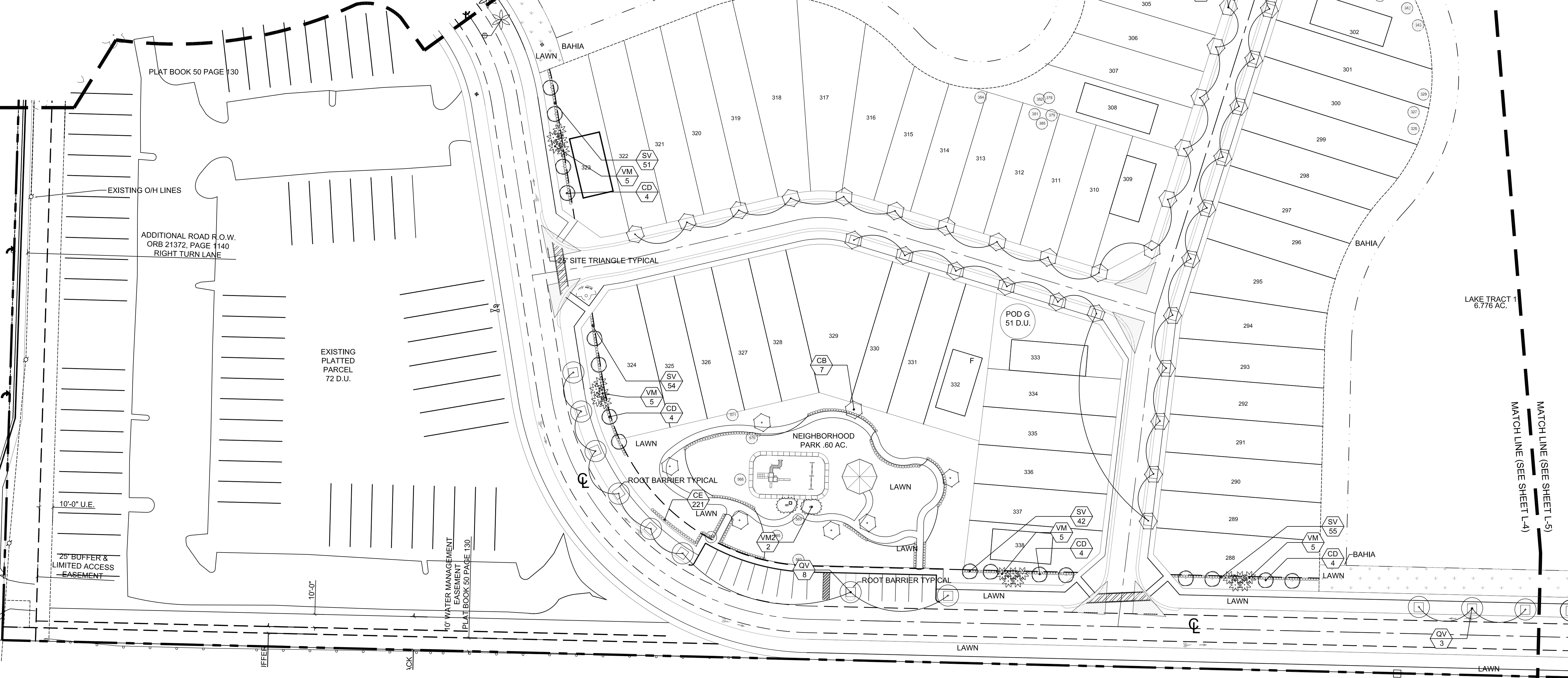
Drawing: Entrance Landscape Plan  
Date: 02/02/2016  
Scale: See Left  
Drawn by: DC  
Sheet No.:  
L-3  
Cad Id.: 2016-013

OVERALL LANDSCAPE LIST

TREES			
SYMBOL	QUAN	PROPOSED MATERIAL	DESCRIPTION
PA	35	Bubbia arborea	12' HT. X 9" SPR. 2" DBH.
VERAWOOD			F.G., 6" CLEAR TRUNK
CB	99	Calyptranthes brasiliensis	12' HT. X 9" SPR. 2" DBH.
BRAZILIAN BEAUTYLEAF			F.G., 6" CLEAR TRUNK
CD	102	Coccoloba diversiflora	12' HT. X 9" SPR. 2" DBH.
PIGEON PLUM			F.G., 6" CLEAR TRUNK
CR	30	Clusia rosea	12' HT. X 9" SPR. 2" DBH.
SHADE TREE			F.G., 6" CLEAR TRUNK
CN	2	COCONUT PALM	9' GW. HEIGHT
GREEN MAYPAN COCONUT PALM			F.G.
CG	23	Conocarpus erectus	12' HT. X 9" SPR. 2" DBH.
SHADE TREE			F.G., 6" CLEAR TRUNK
CS	129	Conocarpus erectus 'verticillatus'	12' HT. X 9" SPR. 2" DBH.
SHADE TREE			F.G., 6" CLEAR TRUNK
LJ	10	Liquidum japonicum	8' HT. X 10' SPR. MULTI TRUNK
JAPANESE PRIVET			F.G.
PS	5	Phoenix sylvatica	10' C.T.
3 PALMS TO 1 SHADE TREE			F.G.
OV	47	Quercus virginiana	12' HT. X 9" SPR. 2" DBH.
LIVE OAK			F.G., 6" CLEAR TRUNK
RE	50	Roystonia elata	20-22' O.A. HT. 6" GREYWOOD
3 PALMS TO 1 SHADE TREE			F.G., MATOES HTS.
TH	54	Tabebuia heterophylla	12' HT. X 9" SPR. 2" DBH.
SHADE TREE			F.G., 6" CLEAR TRUNK
VM	147	Veitchia montgomeryana 'single'	18' O.A. HT. MIN.
3 PALMS TO 1 SHADE TREE			F.G.
VM2	8	Veitchia montgomeryana 'double'	20' O.A. HT. MIN. DOUBLE
3 PALMS TO 1 SHADE TREE			F.G., STAGGERED.
SHRUBS AND GROUNDCOVERS			
SYMBOL	QUAN	PROPOSED MATERIAL	DESCRIPTION
AB	15	Aechmea bromeliads	36" HT. X 24" SPR.
BRIGHT YELLOW BROMELIAD			10" POT
CE	2852	Conocarpus erectus	36" HT. X 24" SPR. / 24" O.C.
GREEN BUTTWOOD			7 GAL.
CG	57	Clusia guiteri	24" HT. X 24" SPR. / 24" O.C.
SMALL LEAF CLUSIA			3 GAL.
FM	560	Ficus microcarpa 'Green Island'	10" HT. X 10" SPR. / 10" O.C.
GREEN ISLAND FICUS			3 GAL.
JV	44	Jasminum volubile	24" HT. X 24" SPR. / 24" O.C.
3 GAL.			3 GAL.
SV	1391	Schefflera arboricola	36" HT. X 24" SPR. / 24" O.C.
GREEN SCHEFFLERA			3 GAL.
TF	54	Tipecum floridana	24" HT. X 24" SPR. / 24" O.C.
DWARF FAKAHATCHEE GRASS			3 GAL.
LAWN	As Required	Stenandrium asiaticum 'Karatam'	SOLID EVEN SOO
LAWN	As Required	St. Augustine Grass	SOLID EVEN SOO
BAHIA	As Required	Paspalum notatum	SOLID EVEN SOO

\* DENOTES NATIVE SPECIES  
 (Tree to Remain)

**LANDSCAPE PLAN**  
 Scale: 1"=40'-0"

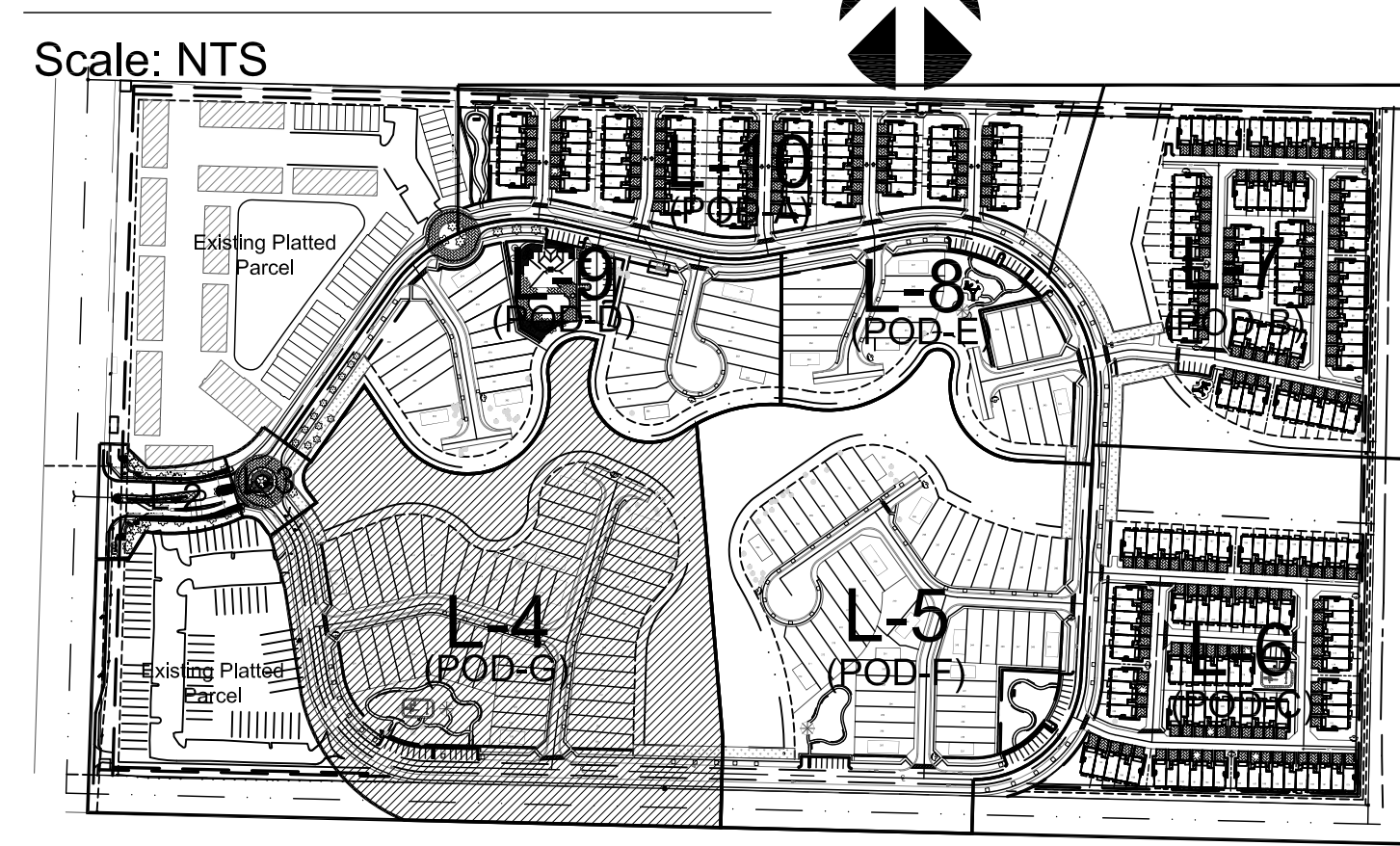


**Root Barriers Note:** Landscape contractor shall use root barriers or ensure reasonable horizontal separation between plants and water and sewer lines based on plant size and or root zone expansion capacity.

**Invasive Exotic Note:** All Invasive exotic plants shall be removed from the location as part of the site preparation process.

**Maintenance Note:** Landscaping shall be maintained according to the approved site plan.

**LOCATION SKETCH**



**WITKIN HULTS DESIGN GROUP**  
 307 South 21st Avenue, Hollywood, Florida  
 Phone: 954.923.9681 Fax: 954.923.9689  
 www.witkindesign.com

**Mediterranea**  
 Riviera Beach, Florida  
 POD G LANDSCAPE PLAN

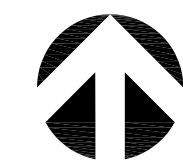
Revisions:	Date:	By:
11 City Comments	02/27/2016	JC
21 City Comments	10/28/2016	JC

Seat:  
 Lic. # LA0000889  
 Member: A.S.L.A.

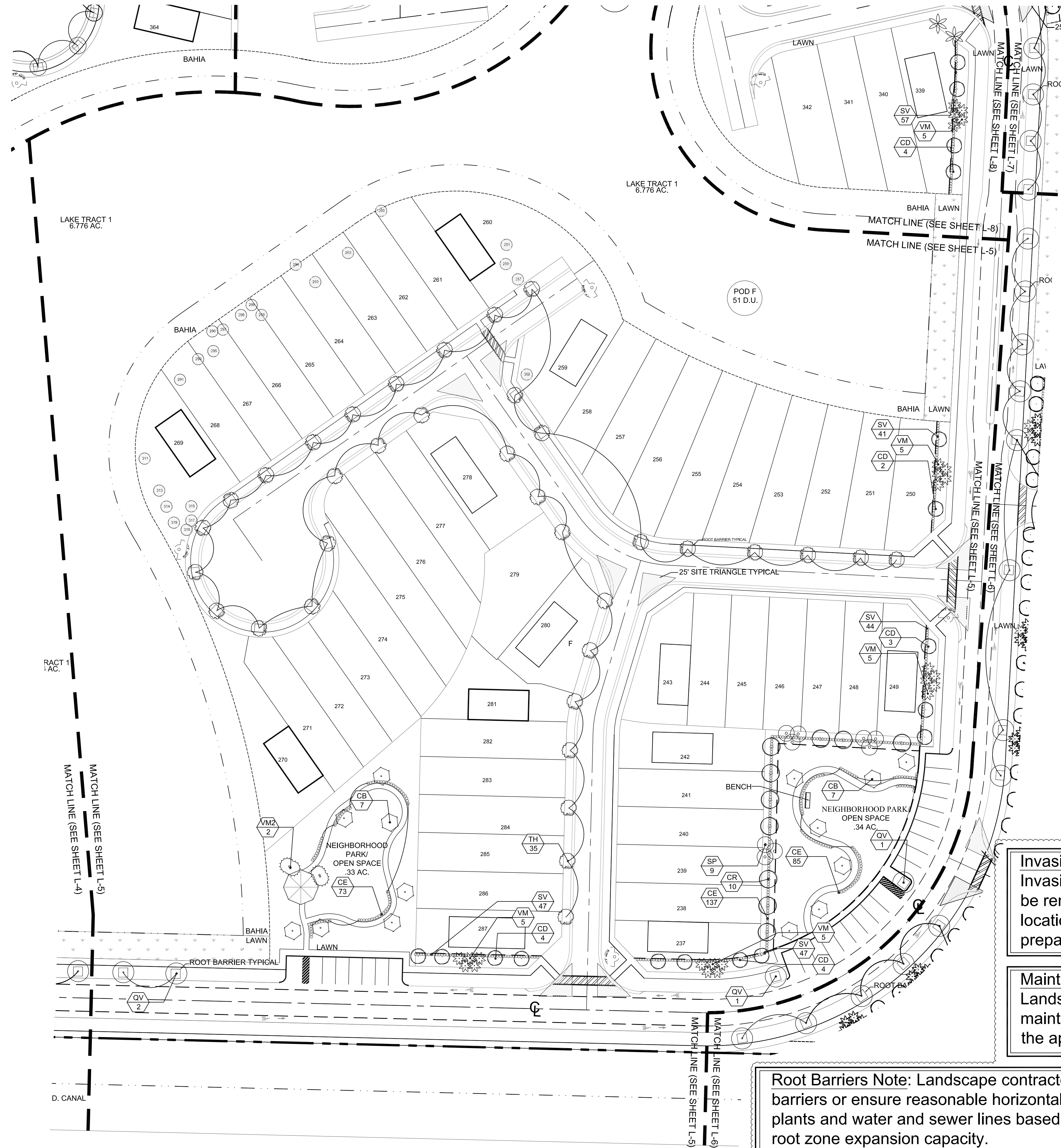
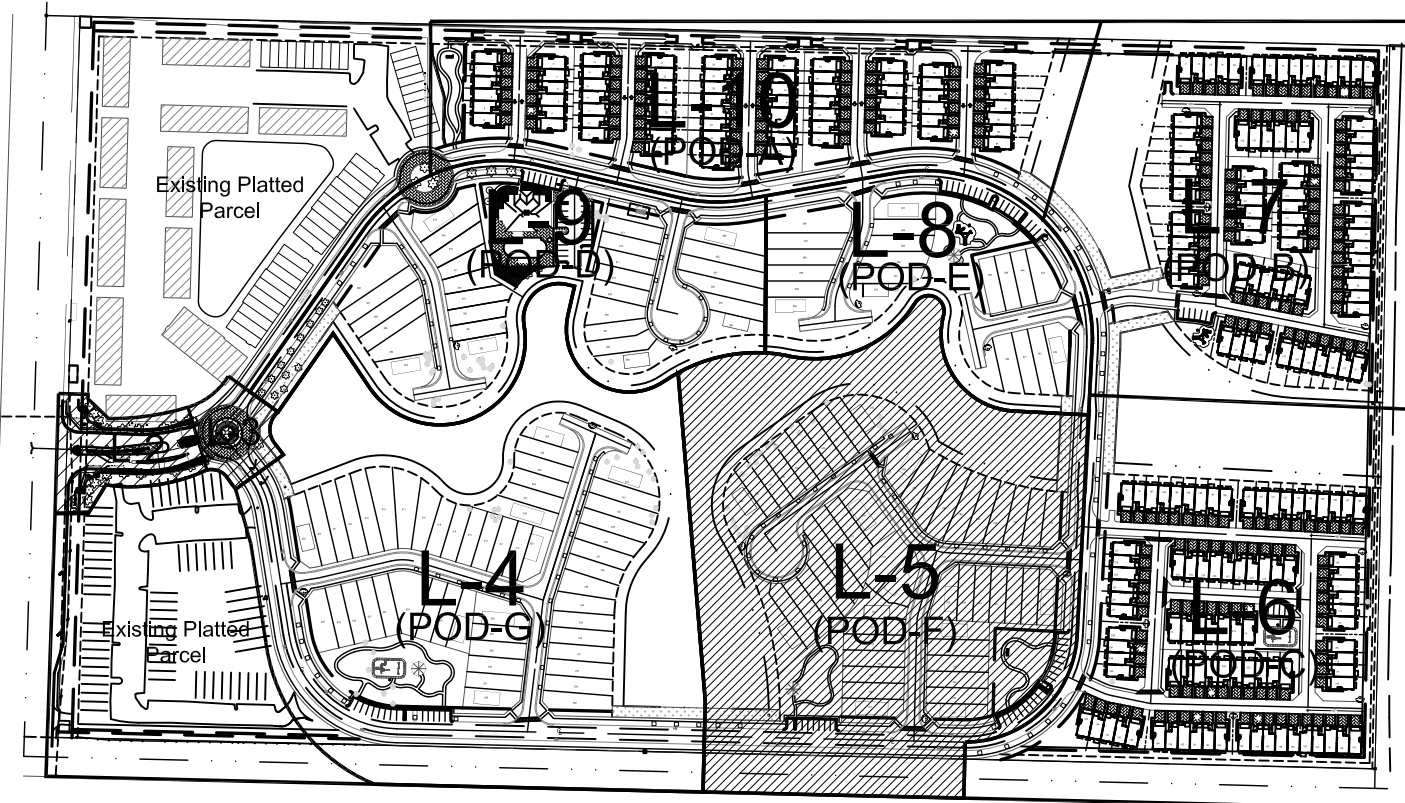
Drawing: POD G LANDSCAPE PLAN  
 Date: 02/02/2016  
 Scale: See Left  
 Drawn by: DC  
 Sheet No.:  
**L-4**  
 Cad Id.: 2016-013

# LOCATION SKETCH

NORTH



Scale: NTS



## OVERALL LANDSCAPE LIST

TREES				
SYMBOL	QUAN.	PROPOSED MATERIAL	DESCRIPTION	IDENTIFICATION
RA	35	<i>Bursera arborea</i>	12 HT. X 8' SPR. 2" DBH.	SHADE TREE
VA		VERAWOOD	F.G. 6' CLEAR TRUNK	
CB	99	<i>Calophyllum brasiliense</i>	12 HT. X 8' SPR. 2" DBH.	SHADE TREE
CD	102	<i>Coccoloba diversiflora</i>	F.G. 6' CLEAR TRUNK	SHADE TREE
CR	30	<i>Chala rosea</i>	12 HT. X 8' SPR. 2" DBH.	SHADE TREE
CR		PITCH APPLE	F.G. 6' CLEAR TRUNK	
CR		COCONUT PALM	8' GW. HEIGHT	3 PALMS TO 1 SHADE TREE
CO	23	<i>Conocarpus erectus</i>	12 HT. X 8' SPR. 2" DBH.	SHADE TREE
CO		GREEN BUTTWOOD	F.G. 6' CLEAR TRUNK	
CS	129	<i>Conocarpus erectus 'sericeus'</i>	12 HT. X 8' SPR. 2" DBH.	SHADE TREE
CS		SILVER BUTTWOOD	F.G. 6' CLEAR TRUNK	
LI	10	<i>Livistium japonicum</i>	8' HT. X 10' SPR. MULTI TRUNK	ACCENT TREE
LI		JAPANESE PRIVET	F.G.	
PS	5	<i>Phoenix sylvestris</i>	10' C.T.	3 PALMS TO 1 SHADE TREE
PS		SILVER DATE PALM	F.G.	
QV	47	<i>Quercus virginiana</i>	12 HT. X 8' SPR. 2" DBH.	SHADE TREE
QV		LIVE OAK	F.G. 6' CLEAR TRUNK	
RE	27	<i>Roystonia elata</i>	20-22 O.A. HT. 6' GREYWOOD	3 PALMS TO 1 SHADE TREE
RE		ROYAL PALM	F.G. MATCHED HTS.	
SP	50	<i>Sabal palmetto</i>	16-20 O.A. HT. STAGGERED	3 PALMS TO 1 SHADE TREE
SP		SABAL PALM	F.G.	
TH	54	<i>Tabebuia heterophylla</i>	12 HT. X 8' SPR. 2" DBH.	SHADE TREE
TH		PINK TRUMPET TREE	F.G. 6' CLEAR TRUNK	
VM	147	<i>Valchita montgomeryana 'single'</i>	18' O.A. HT. MIN.	3 PALMS TO 1 SHADE TREE
VM		SINGLE MONTGOMERY PALM	F.G.	
VM	8	<i>Valchita montgomeryana 'double'</i>	20' O.A. HT. MIN. DOUBLE	3 PALMS TO 1 SHADE TREE
VM		DOUBLE MONTGOMERY PALM	F.G. STAGGERED.	
SHRUBS AND GROUNDCOVERS				
SYMBOL	QUAN.	PROPOSED MATERIAL	DESCRIPTION	
AB	15	<i>Aechmea blanchettiana</i>	30" HT. X 24" SPL.	
AB		BRIGHT YELLOW BROMELIAD	10" POT	
CE	2852	<i>Conocarpus erectus</i>	30" HT. X 24" SPL. / 24" O.C.	
CE		GREEN BUTTWOOD	7 GAL.	
CG	57	<i>Clusia guifera</i>	24" HT. X 24" SPL. / 24" O.C.	
CG		SMALL LEAF CLUSIA	3 GAL.	
FM	560	<i>Ficus microcarpa 'Green Island'</i>	10" HT. X 15" SPL. / 15" O.C.	
FM		GREEN ISLAND FIGUS	3 GAL.	
JV	44	<i>Jasminum white</i>	24" HT. X 24" SPL. / 24" O.C.	
JV		WAX JASMINE	3 GAL.	
SY	1391	<i>Schefflera arboricola</i>	36" HT. X 24" SPL. / 24" O.C.	
SY		GREEN SCHEFFLERA	3 GAL.	
TF	54	<i>Tillandsia nutans</i>	24" HT. X 24" SPL. / 24" O.C.	
TF		DWARF FAKAHATCHEE GRASS	3 GAL.	
LAWN	As Required	<i>Stenodaphnum secundatum 'Koratani'</i>	SOLID EVEN SOD	
LAWN		ST. AUGUSTINE GRASS		
BAHIA	As Required	<i>Paspalum notatum</i>	SOLID EVEN SOD	
BAHIA		ARGENTINE BAHIA GRASS		

\* DENOTES NATIVE SPECIES

(R) Tree to Remain

**Invasive Exotic Note:** All Invasive exotic plants shall be removed from the location as part of the site preparation process.

**Maintenance Note:** Landscaping shall be maintained according to the approved site plan.

**Root Barriers Note:** Landscape contractor shall use root barriers or ensure reasonable horizontal separation between plants and water and sewer lines based on plant size and or root zone expansion capacity.

**WITKIN HULTS DESIGN GROUP**  
 307 South 21st Avenue Hollywood, Florida  
 phone: 954.923.9681 facsimile: 954.923.9689  
 www.witkindesign.com

**Mediterranea**  
 Riviera Beach, Florida  
 POD F LANDSCAPE PLAN

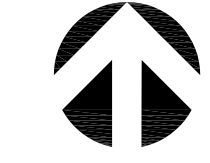
Revisions:	Date:	By:
11 City Comments	02/27/2016	DC
21 City Comments	10/28/2016	DC

Seat:  
 Lic. # LA0000889  
 Member: A.S.L.A.

Drawing: POD F LANDSCAPE PLAN  
 Date: 02/02/2016  
 Scale: See Left  
 Drawn by: DC  
 Sheet No.:  
 Cad Id.: 2016-013

# LANDSCAPE PLAN

NORTH

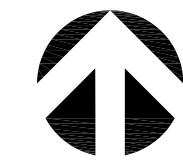


Scale: 1"=40'-0"

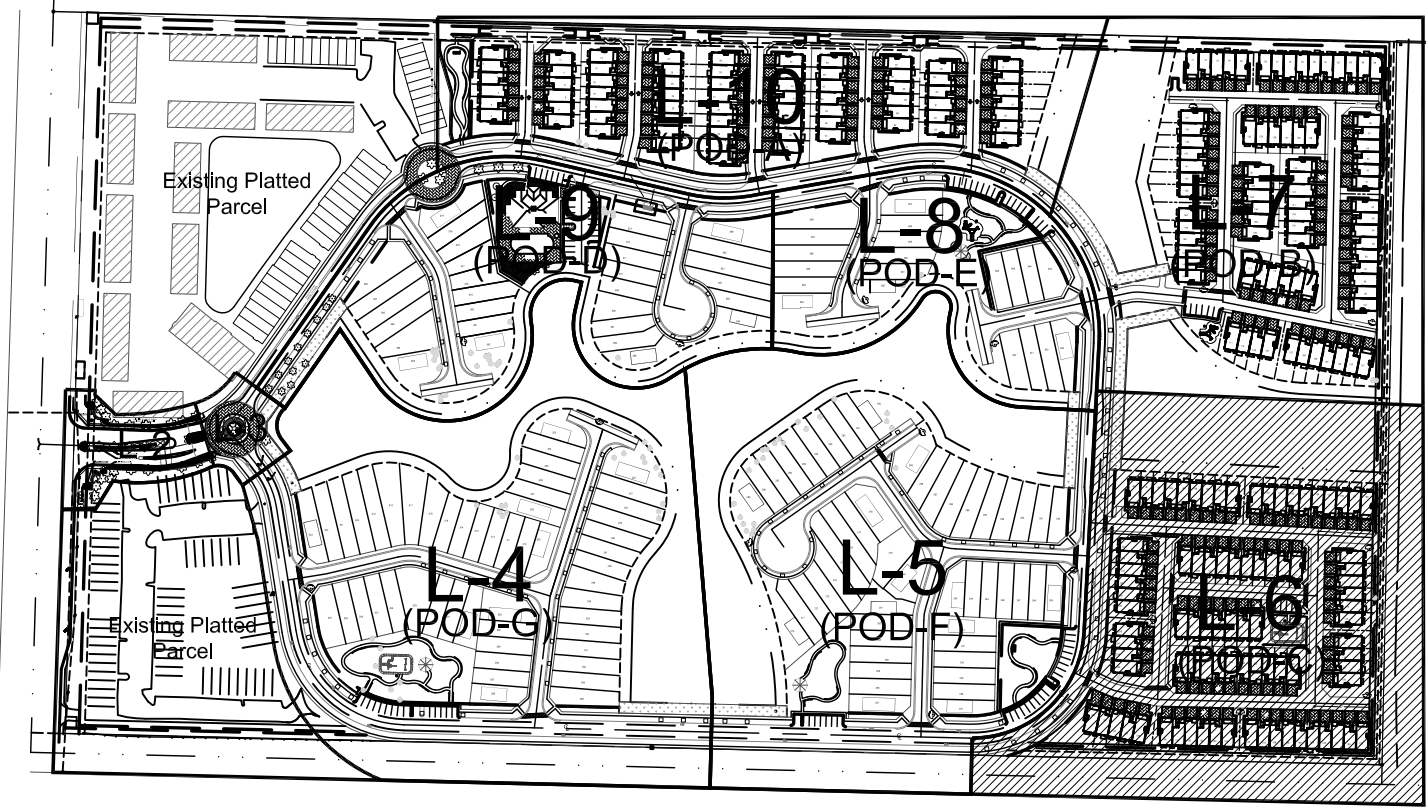
L-5

# LOCATION SKETCH

NORTH



Scale: NTS



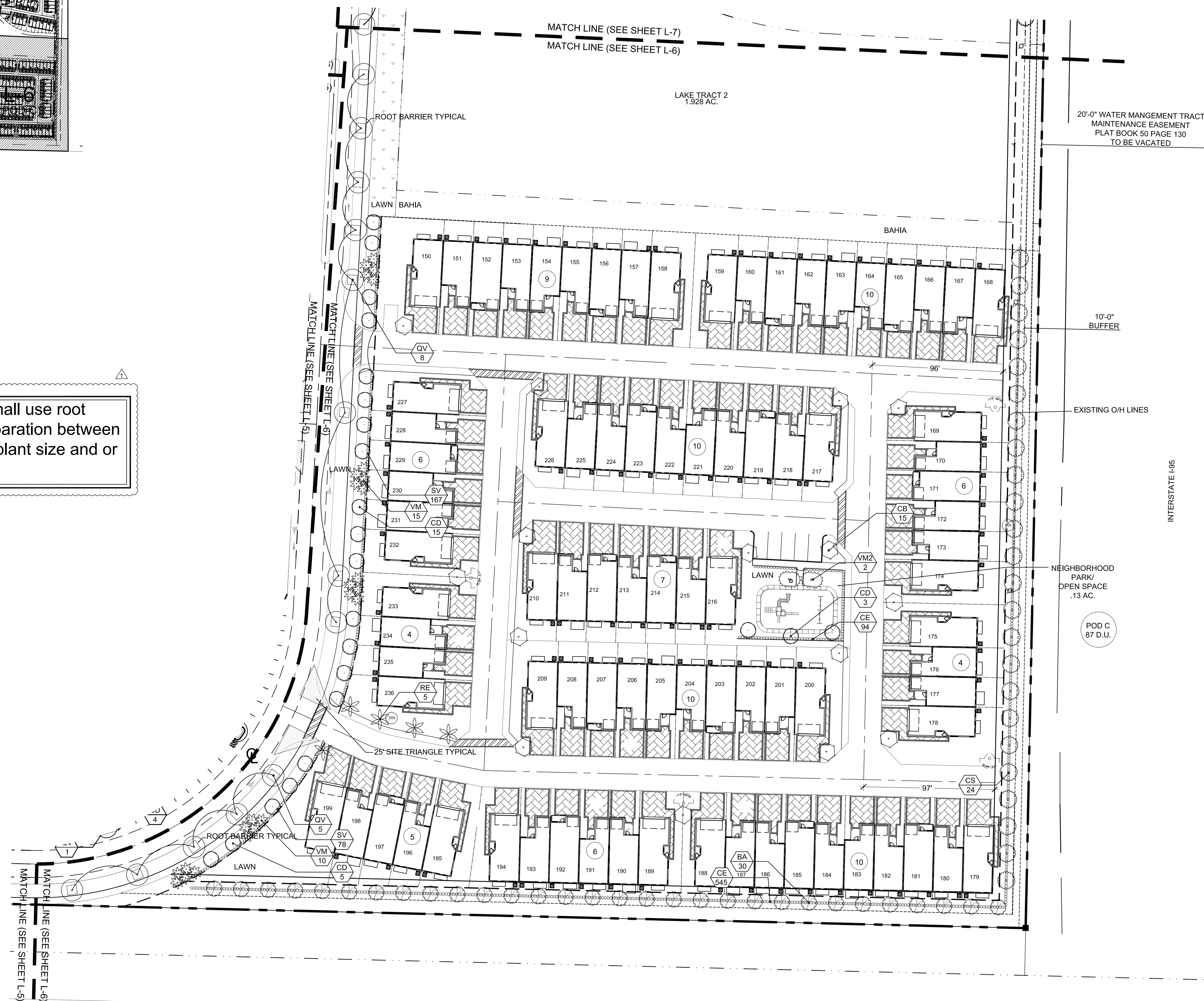
**Invasive Exotic Note:** All Invasive exotic plants shall be removed from the location as part of the site preparation process.

**Maintenance Note:** Landscaping shall be maintained according to the approved site plan.

**Root Barriers Note:** Landscape contractor shall use root barriers or ensure reasonable horizontal separation between plants and water and sewer lines based on plant size and or root zone expansion capacity.

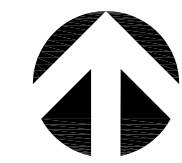
OVERALL LANDSCAPE LIST			
TREES			
SYMBOL	QUAN.	PROPOSED MATERIAL	DESCRIPTION
BA	35	Bubbia arborea	12 HT. X 9' SPR. 2" DBH.
VERAWOOD			F.G., 6' CLEAR TRUNK
CB	99	Calophyllum brasiliense	12 HT. X 9' SPR. 2" DBH.
BRASILIAN BEAUTYLEAF			F.G., 6' CLEAR TRUNK
CD	102	Coccoloba diversiflora	12 HT. X 9' SPR. 2" DBH.
PIGEON PLUM			F.G., 6' CLEAR TRUNK
CR	30	*Clusia rosea	12 HT. X 9' SPR. 2" DBH.
PITCH APPLE			F.G., 6' CLEAR TRUNK
CN	2	Conocarpus erectus 'Mayana'	8' OW. HEIGHT
GREEN MAYPAN COCONUT PALM			3 PALMS TO 1 SHADE TREE
CO	23	*Conocarpus erectus	12 HT. X 9' SPR. 2" DBH.
GREEN BUTTONWOOD			F.G., 6' CLEAR TRUNK
CS	129	*Conocarpus erectus 'serotus'	12 HT. X 9' SPR. 2" DBH.
SILVER BUTTONWOOD			F.G., 6' CLEAR TRUNK
LJ	10	Ligustrum japonicum	6' HT. X 10' SPR. MULTI TRUNK
JAPANESE PRIVET			F.G.
PS	5	Phoenix sylvestris	10' C.T.
SILVER DATE PALM			3 PALMS TO 1 SHADE TREE
OV	47	*Quercus virginiana	12 HT. X 9' SPR. 2" DBH.
LIVE OAK			F.G., 6' CLEAR TRUNK
RE	27	*Rroystonia elata	20-22' O.A. HT., 6" GREYWOOD
ROYAL PALM			3 PALMS TO 1 SHADE TREE
SP	50	*Sabal palmetto	16-20' O.A. HT. STAGGERED
SABAL PALM			F.G.
TH	54	Tabebuia heterophylla	12 HT. X 9' SPR. 2" DBH.
PINK TRUMPET TREE			F.G., 6' CLEAR TRUNK
VM	147	*Vellozia montgomeryana 'single'	18' O.A. HT. MIN.
SINGLE MONTGOMERY PALM			F.G.
VM2	8	*Vellozia montgomeryana 'double'	20' O.A. HT. MIN. DOUBLE
DOUBLE MONTGOMERY PALM			F.G., STAGGERED.
SHRUBS AND GROUNDCOVERS			
SYMBOL	QUAN.	PROPOSED MATERIAL	DESCRIPTION
AB	15	Andropogon distachyoides	30" HT. X 24" SPR.
BRIGHT YELLOW BROMELIAD			10" POT
CE	2802	*Conocarpus erectus	30" HT. X 24" SPR./ 24" O.C.
GREEN BUTTONWOOD			7 GAL.
CG	57	*Clusia guifera	24" HT. X 24" SPR. / 24" O.C.
SMALL LEAF CLUSIA			3 GAL.
FM	560	Ficus microcarpa 'Green Island'	15" HT. X 15" SPR. / 15" O.C.
GREEN ISLAND FICUS			3 GAL.
JV	44	Jasminum volubile	24" HT. X 24" SPR. / 24" O.C.
WAX JASMINE			3 GAL.
SV	1391	Schefflera arborescens	30" HT. X 24" SPR. / 24" O.C.
GREEN SCHEFFLERA			3 GAL.
TF	54	*Tillandsia floridana	24" HT. X 24" SPR. / 24" O.C.
DWARF FAKAMATCHEE GRASS			3 GAL.
LAWN	As Required	Stenotaphrum secundatum 'Florakem'	SOLID EVEN SOD
ST. AUGUSTINE GRASS			
BAHIA	As Required	Paspalum notatum	SOLID EVEN SOD
ARGENTINE BAHIA GRASS			

Tree to Remain



# LANDSCAPE PLAN

NORTH



Scale: 1"=40'-0"

**WITKIN HULTS DESIGN GROUP**  
 307 South 21st Avenue Hollywood, Florida  
 phone: 954.923.9681 facsimile: 954.923.9689  
 www.witkindesign.com

**Mediterranea**  
 Riviera Beach, Florida  
 POD C LANDSCAPE PLAN

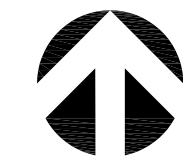
Revisions:	Date:	By:
11 City Comments	02/27/2016	DC
21 City Comments	10/28/2016	DC

Seat:  
 Lic. # LA0000889  
 Member: A.S.L.A.

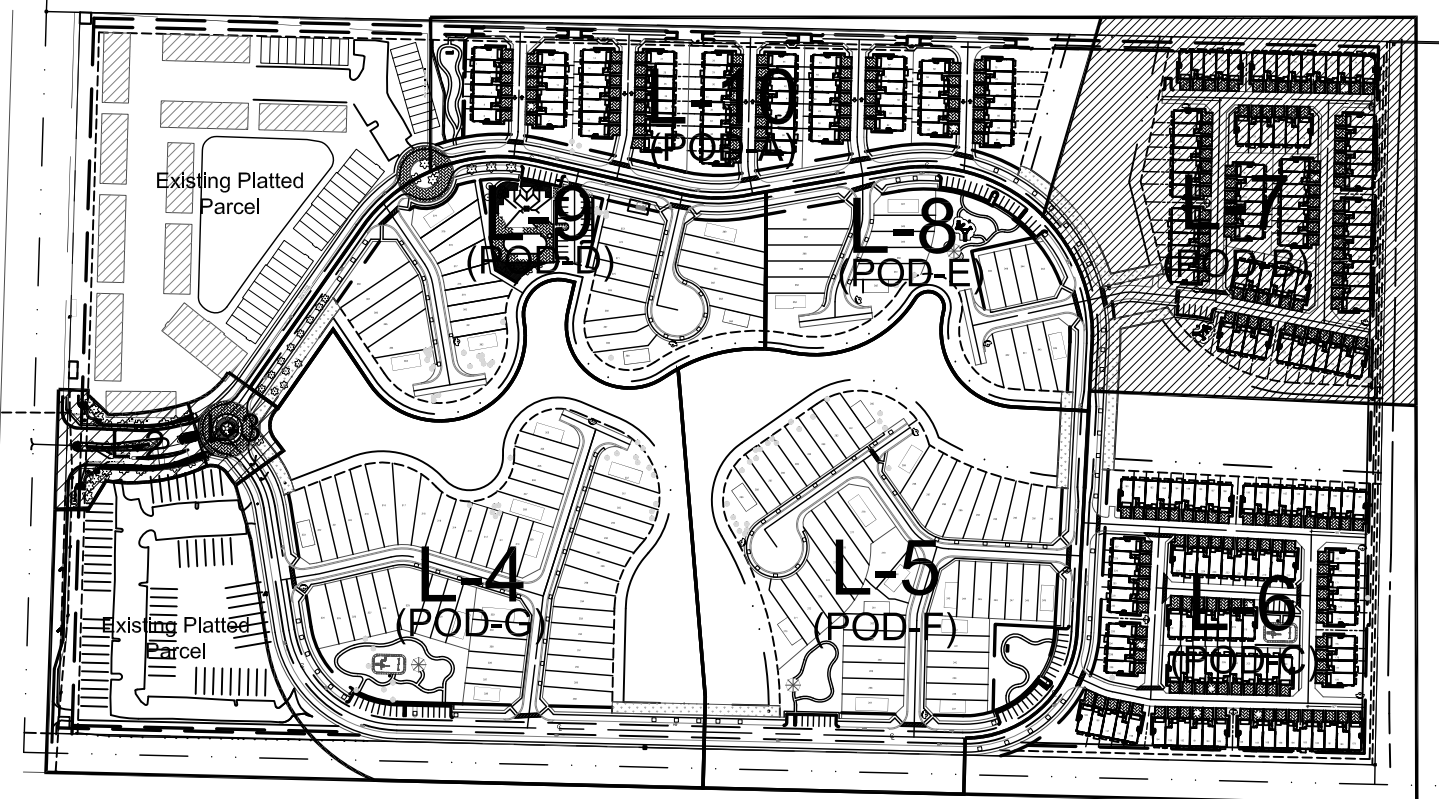
Drawing: POD C LANDSCAPE PLAN  
 Date: 02/02/2016  
 Scale: See Left  
 Drawn by: DC  
 Sheet No.:  
**L-6**  
 Cad Id.: 2016-013

# LOCATION SKETCH

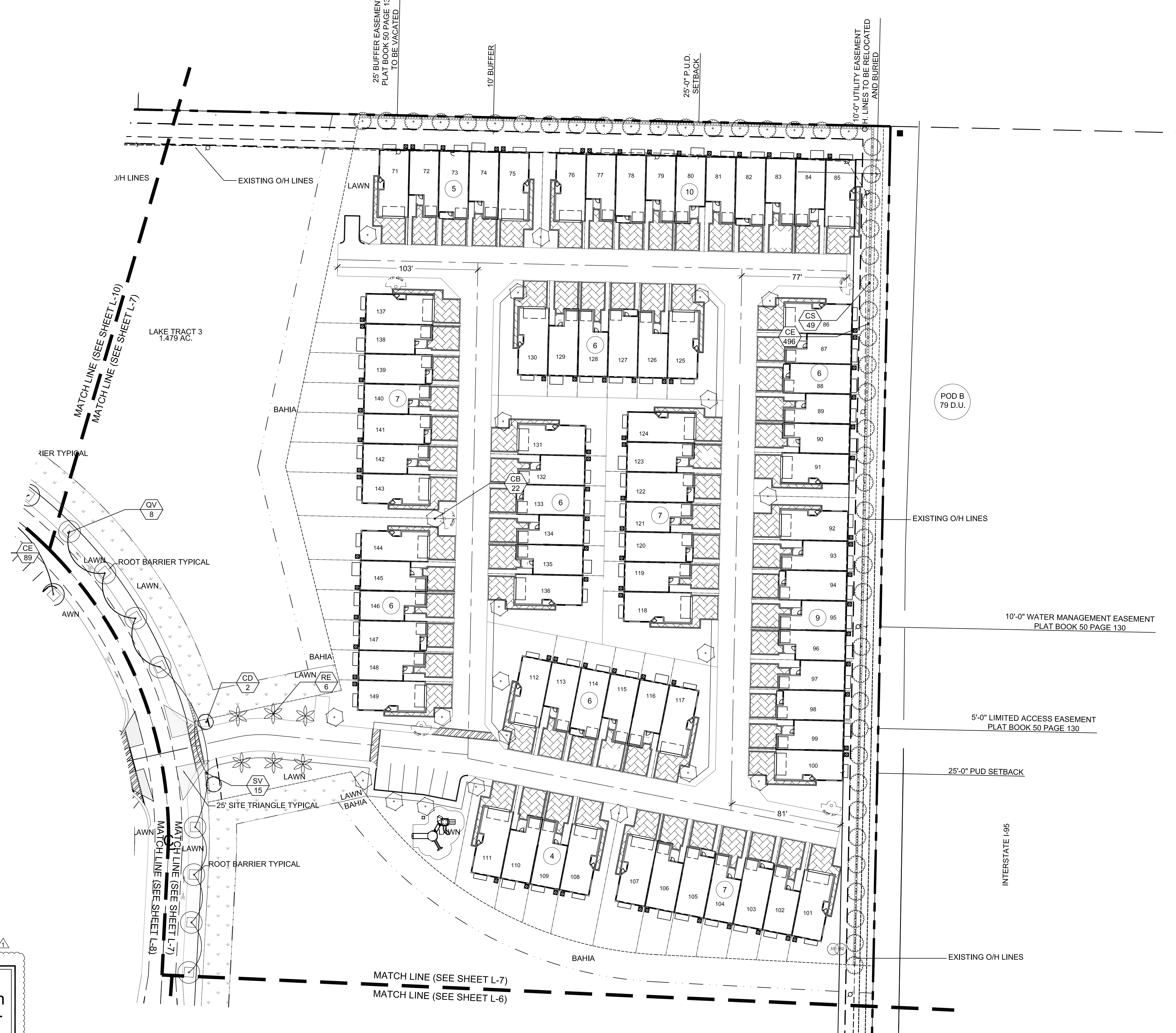
NORTH



Scale: NTS



SECTION 25  
TOWNSHIP 42 S RANGE 42 E  
PROPERTY CONTROL NUMBER  
5642422500001170



## OVERALL LANDSCAPE LIST

TREES				
SYMBOL	QUAN	PROPOSED MATERIAL	DESCRIPTION	IDENTIFICATION
PA	35	BUREAU ARBOREA VERAWOOD	12" HT. X 5" SPR. 2" DBH. F.G. 6" CLEAR TRUNK	SHADE TREE
OB	99	CALOPHYLLUM BRAZILIENSE BRAZILIAN BEAUTYLEAF	12" HT. X 5" SPR. 2" DBH. F.G. 6" CLEAR TRUNK	SHADE TREE
CD	102	COCOTRINIA VERTICILLATA PIGEON PLUM	12" HT. X 5" SPR. 2" DBH. F.G. 6" CLEAR TRUNK	SHADE TREE
CR	30	CLUSA ROSEA PITCH APPLE	12" HT. X 5" SPR. 2" DBH. F.G. 6" CLEAR TRUNK	SHADE TREE
CN	2	COCONUT PALM GREEN MAYTAN COCONUT PALM	8' DW. HEIGHT F.G.	3 PALMS TO 1 SHADE TREE
CO	23	CONOCARPUS ERECTUS GREEN BUTTONWOOD	12" HT. X 5" SPR. 2" DBH. F.G. 6" CLEAR TRUNK	SHADE TREE
CS	129	CONOCARPUS ERECTUS 'LITTLEWAVE' SILVER BUTTONWOOD	12" HT. X 5" SPR. 2" DBH. F.G. 6" CLEAR TRUNK	SHADE TREE
LI	10	LIGULSTRUM JAPONICUM JAPANESE PRIVET	8' HT. X 10" SPR. MULTI TRUNK F.G.	ACCENT TREE
PS	5	PHOENIX SYLVESTRIS SILVER DATE PALM	10' C.T. F.G.	3 PALMS TO 1 SHADE TREE
QV	47	QUERCUS VIRGINICA LIVE OAK	12" HT. X 5" SPR. 2" DBH. F.G. 6" CLEAR TRUNK	SHADE TREE
RE	27	ROYSTERIA ELATA ROYAL PALM	20-22' O.A. HT. 8" GREYWOOD F.G. MATCHED HTS.	3 PALMS TO 1 SHADE TREE
SP	50	SABAL PALMETTO SABAL PALM	16-20' O.A. HT. STAGGERED F.G.	3 PALMS TO 1 SHADE TREE
TH	54	TABEBULA HETEROPHYLLA PINK TRUMPET TREE	12" HT. X 5" SPR. 2" DBH. F.G. 6" CLEAR TRUNK	SHADE TREE
VM	147	VEITCHIA MONTGOMERYANA 'SINGLE' SINGLE MONTGOMERY PALM	18' O.A. HT. MIN. F.G.	3 PALMS TO 1 SHADE TREE
VM2	8	VEITCHIA MONTGOMERYANA 'DOUBLE' DOUBLE MONTGOMERY PALM	20' O.A. HT. MIN. DOUBLE F.G. STAGGERED.	3 PALMS TO 1 SHADE TREE
SHRUBS AND GROUNDCOVERS				
SYMBOL	QUAN	PROPOSED MATERIAL	DESCRIPTION	
AB	15	AECHMEA BLANCHETTIANA BRIGHT YELLOW BROMELIAD	36" HT. X 24" SPR. 10" POT	
CE	2852	CONOCARPUS ERECTUS GREEN BUTTONWOOD	36" HT. X 24" SPR. / 24" O.C. 7 GAL.	
CG	57	CLUSA GUTTIFERA SMALL LEAF CLUSA	24" HT. X 24" SPR. / 24" O.C. 3 GAL.	
FM	560	FICUS MICROCARPA 'SILVER LANCE' GREEN ISLAND FIGUS	15" HT. X 15" SPR. / 15" O.C. 3 GAL.	
JV	44	JASMINE VOLUBILE WAX JASMINE	24" HT. X 24" SPR. / 24" O.C. 3 GAL.	
SV	1391	SCHIFFERIA ARBORESCENS GREEN SCHIFFERIA	36" HT. X 24" SPR. / 24" O.C. 3 GAL.	
TF	54	TISSOTIA BOLDIANA DWARF FAKAHATCHEE GRASS	24" HT. X 24" SPR. / 24" O.C. 3 GAL.	
LAWN	As Required	STENOZAPHNUM SECUNDARIUM 'BOSTON' ST. AUGUSTINE GRASS	SOLID EVEN SOD	
BAHIA	As Required	PHILOXERUM ROTUNDUM ARGENTINE BAHIA GRASS	SOLID EVEN SOD	

\* DENOTES NATIVE SPECIES

**Invasive Exotic Note:** All Invasive exotic plants shall be removed from the location as part of the site preparation process.

**Maintenance Note:** Landscaping shall be maintained according to the approved site plan.

**Root Barriers Note:** Landscape contractor shall use root barriers or ensure reasonable horizontal separation between plants and water and sewer lines based on plant size and or root zone expansion capacity.

**WITKIN HULTS DESIGN GROUP**  
307 South 21st Avenue Hollywood, Florida  
phone: 954.923.9681 fax: 954.923.9689  
www.witkindesign.com

**Mediterranea**  
Riviera Beach, Florida  
POD B LANDSCAPE PLAN

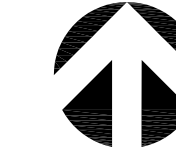
Revisions:	Date:	By:
11 City Comments	02/27/2016	JC
21 City Comments	10/28/2016	JC

Seat:  
Lic. # LA0000889  
Member: A.S.L.A.

Drawing: POD B LANDSCAPE PLAN  
Date: 02/02/2016  
Scale: See Left  
Drawn by: DC  
Sheet No.:  
L-7  
Cad Id.: 2016-013

# LANDSCAPE PLAN

NORTH



Scale: 1"=40'-0"

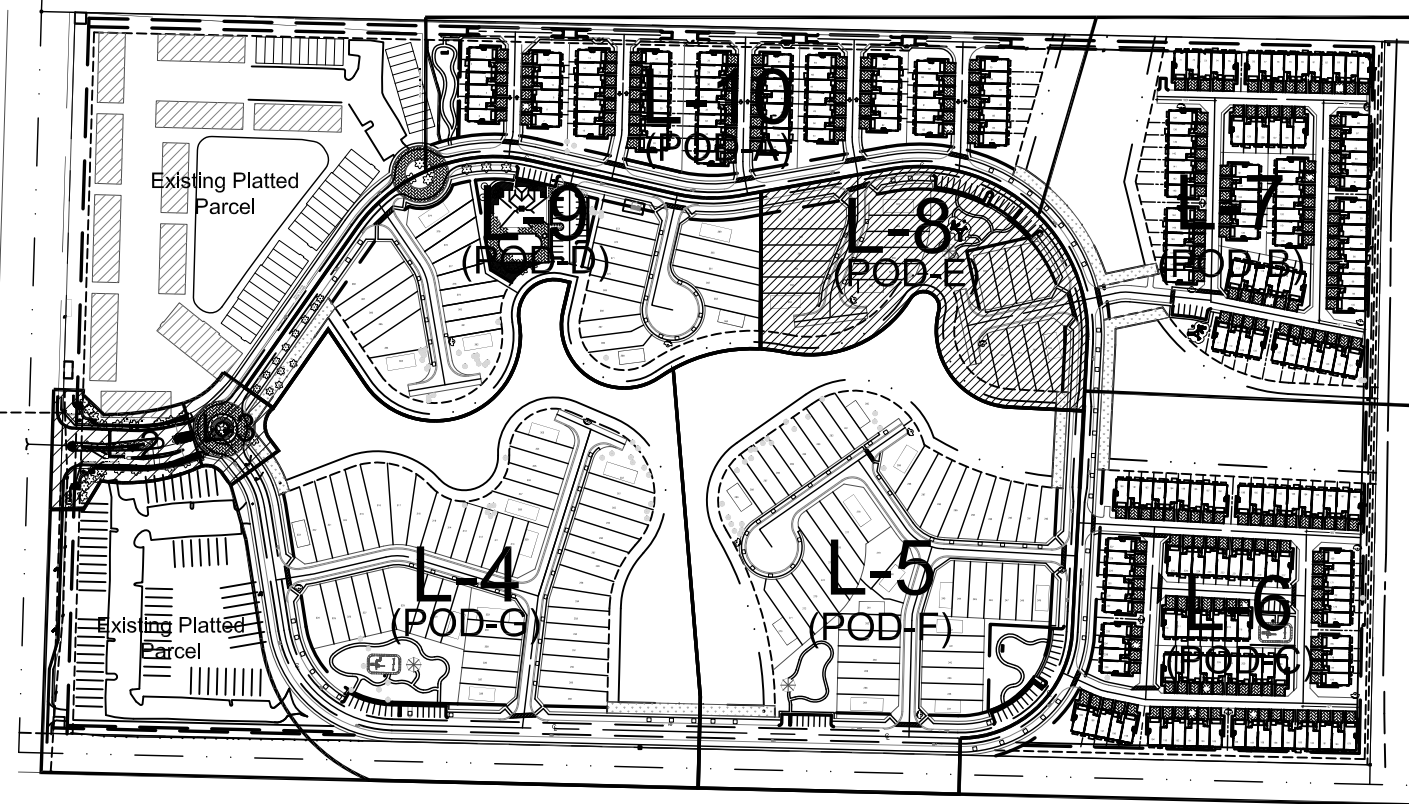
L-7



LOCATION SKETCH



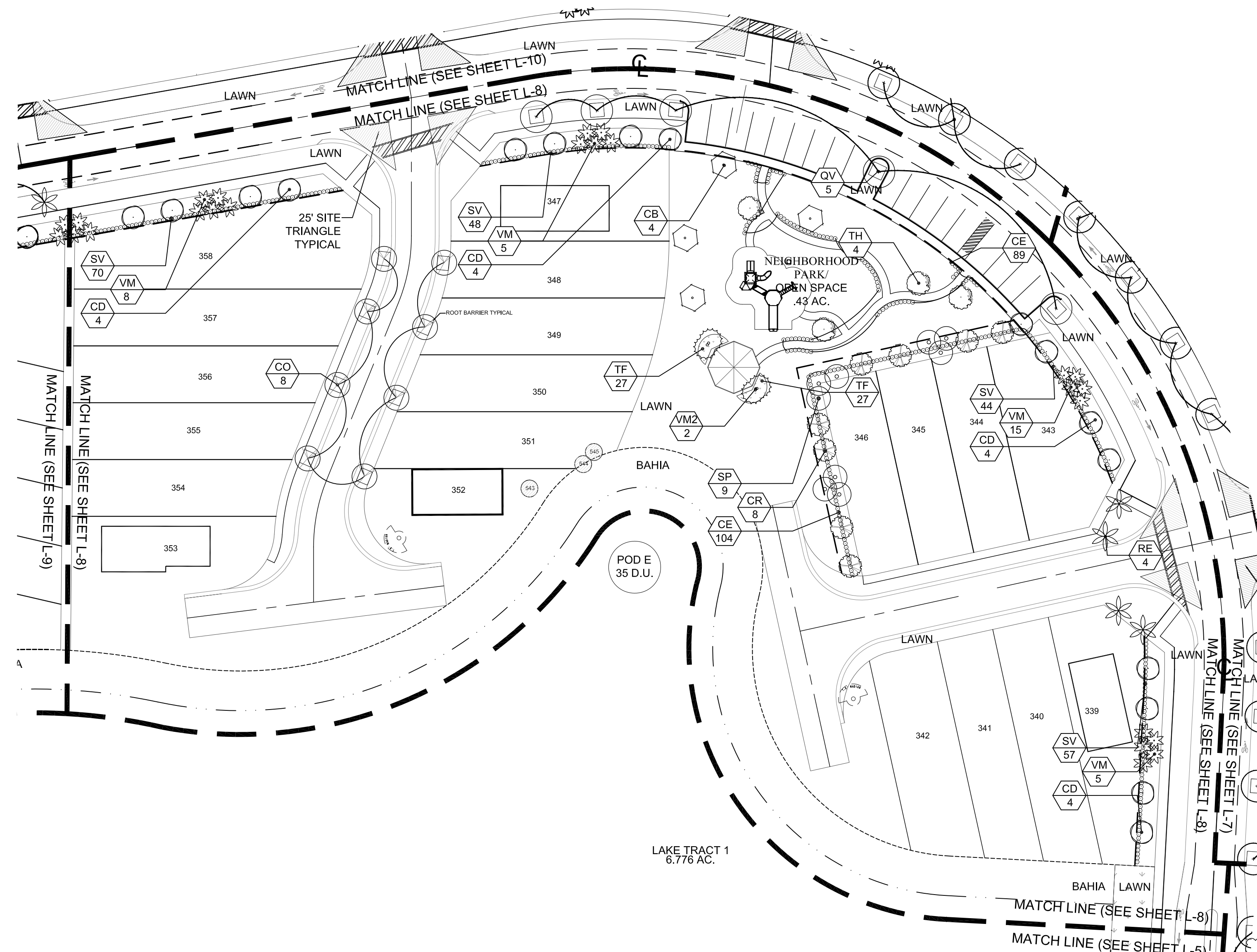
Scale: NTS



OVERALL LANDSCAPE LIST

TREES			
SYMBOL	QUAN.	PROPOSED MATERIAL	DESCRIPTION
PA	35	Bulnesia arborea VERAWOOD	12 HT. X 5' SPR. 2" DBH. F.G. 6' CLEAR TRUNK
CB	99	Calophyllum brasiliense BRAZILIAN BEAUTYLEAF	12 HT. X 5' SPR. 2" DBH. F.G. 6' CLEAR TRUNK
CD	102	*Coccotheca diversiflora PIGEON PALM	12 HT. X 5' SPR. 2" DBH. F.G. 6' CLEAR TRUNK
CR	30	*Clusia rosea PITCH APPLE	12 HT. X 5' SPR. 2" DBH. F.G. 6' CLEAR TRUNK
CN	2	Cocon noddiana 'Maypan' GREEN MAYPAN COCONUT PALM	F.G.
CO	23	*Conocarpus erectus GREEN BUTTWOOD	12 HT. X 5' SPR. 2" DBH. F.G. 6' CLEAR TRUNK
CS	129	*Conocarpus erectus 'barcaui' SILVER BUTTWOOD	12 HT. X 5' SPR. 2" DBH. F.G. 6' CLEAR TRUNK
LJ	10	Ligustrum japonicum JAPANESE PRIVET	5' HT. X 10' SPR. MULTI TRUNK F.G.
PS	5	Phoenix sylvestris SILVER DATE PALM	10' C.T. F.G.
OV	47	*Quercus virginiana LIVE OAK	12 HT. X 5' SPR. 2" DBH. F.G. 6' CLEAR TRUNK
RE	27	*Roystonea elata ROYAL PALM	20-22' O.A. HT. 6" GREYWOOD F.G. MATCHED HTS.
SP	50	*Sabal palmello SABAL PALM	16-20' O.A. HT. STAGGERED F.G.
TH	54	Tabebuia heterophylla PINK TRUMPET TREE	12 HT. X 5' SPR. 2" DBH. F.G. 6' CLEAR TRUNK
VM	147	Velichia montgomeryana 'single' SINGLE MONTGOMERY PALM	18' O.A. HT. MIN. F.G.
VM2	8	Velichia montgomeryana 'double' DOUBLE MONTGOMERY PALM	20' O.A. HT. MIN. DOUBLE F.G. STAGGERED.
SHRUBS AND GROUNDCOVERS			
SYMBOL	QUAN.	PROPOSED MATERIAL	DESCRIPTION
AB	15	Aechmea blanchetiana BRIGHT YELLOW BROMELIAD	36" HT. X 24" SPR. 10" POT
CE	2852	*Conocarpus erectus GREEN BUTTWOOD	36" HT. X 24" SPR. / 24" O.C. 7 GAL.
CG	57	*Clusia guttata SMALL LEAF CLUSIA	24" HT. X 24" SPR. / 24" O.C. 3 GAL.
FM	560	Ficus microcarpa 'Green Island' GREEN ISLAND FIGUS	15" HT. X 15" SPR. / 15" O.C. 3 GAL.
JV	44	Jasminum volubile WAX JASMINE	24" HT. X 24" SPR. / 24" O.C. 3 GAL.
SV	1391	Schefflera arborescens GREEN SCHEFFLERIA	36" HT. X 24" SPR. / 24" O.C. 7 GAL.
TF	54	*Tripsacum daniellii DWARF FAKAHATCHEE GRASS	24" HT. X 24" SPR. / 24" O.C. 3 GAL.
LAWN	As Required	Stenotaphrum secundatum 'Koratani' ST. AUGUSTINE GRASS	SOLID EVEN SOO
BAHIA	As Required	Praspalum nitidum ARGENTINE BAHIA GRASS	SOLID EVEN SOO

Tree to Remain



**Invasive Exotic Note:** All Invasive exotic plants shall be removed from the location as part of the site preparation process.

**Maintenance Note:** Landscaping shall be maintained according to the approved site plan.

**Root Barriers Note:** Landscape contractor shall use root barriers or ensure reasonable horizontal separation between plants and water and sewer lines based on plant size and or root zone expansion capacity.

**WITKIN HULTS DESIGN GROUP**  
 307 South 21st Avenue Hollywood, Florida  
 phone: 954.923.9681 facsimile: 954.923.9689  
 www.witkindesign.com

**Mediterranea**  
 Riviera Beach, Florida  
 POD E LANDSCAPE PLAN

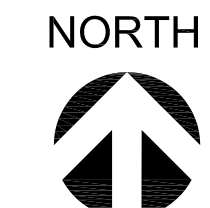
Revisions:	Date:	By:
11 City Comments	02/27/2016	JC
21 City Comments	10/28/2016	JC

Seat:  
 Lic. # LA0000889  
 Member: A.S.L.A.

Drawing: POD E LANDSCAPE PLAN  
 Date: 02/02/2016  
 Scale: See Left  
 Drawn by: DC  
 Sheet No.:  
**L-8**  
 Cad Id.: 2016-013

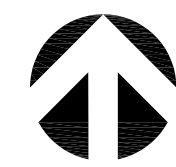
LANDSCAPE PLAN

Scale: 1"=40'-0"

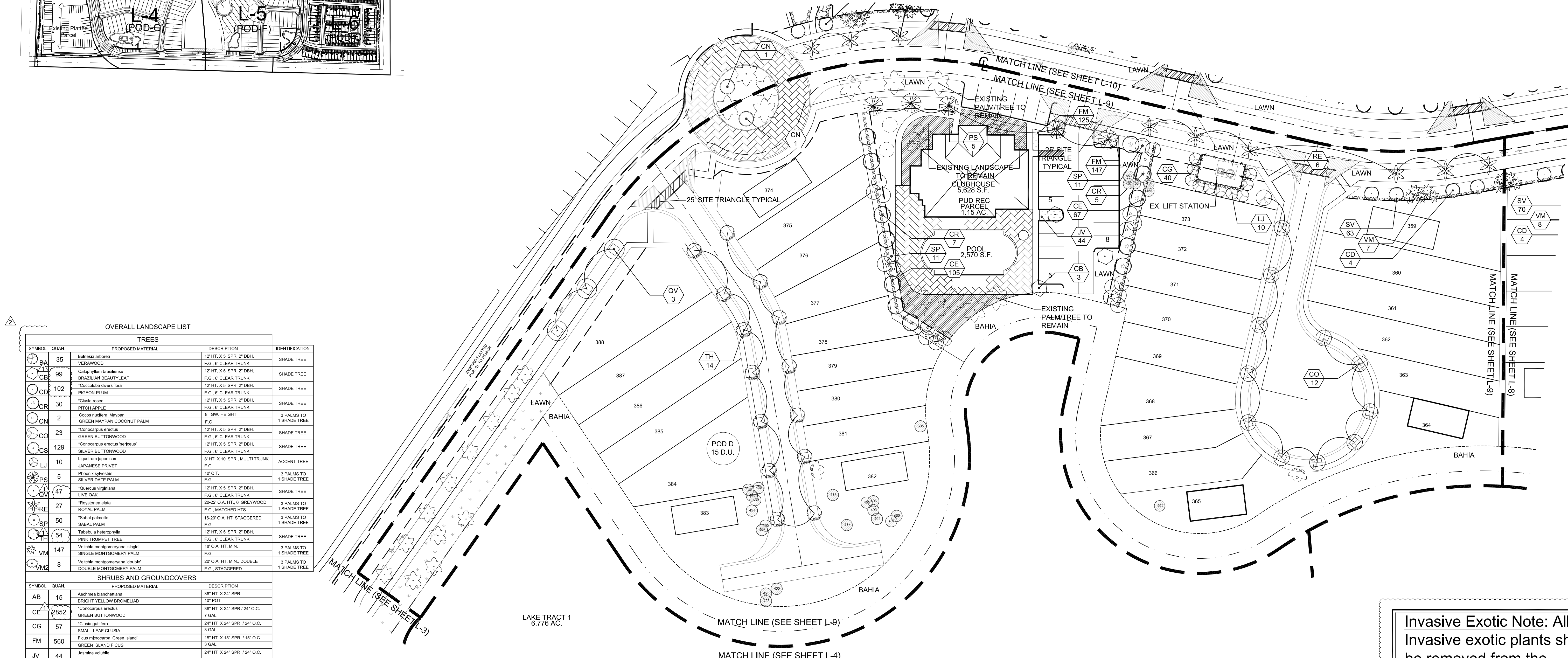
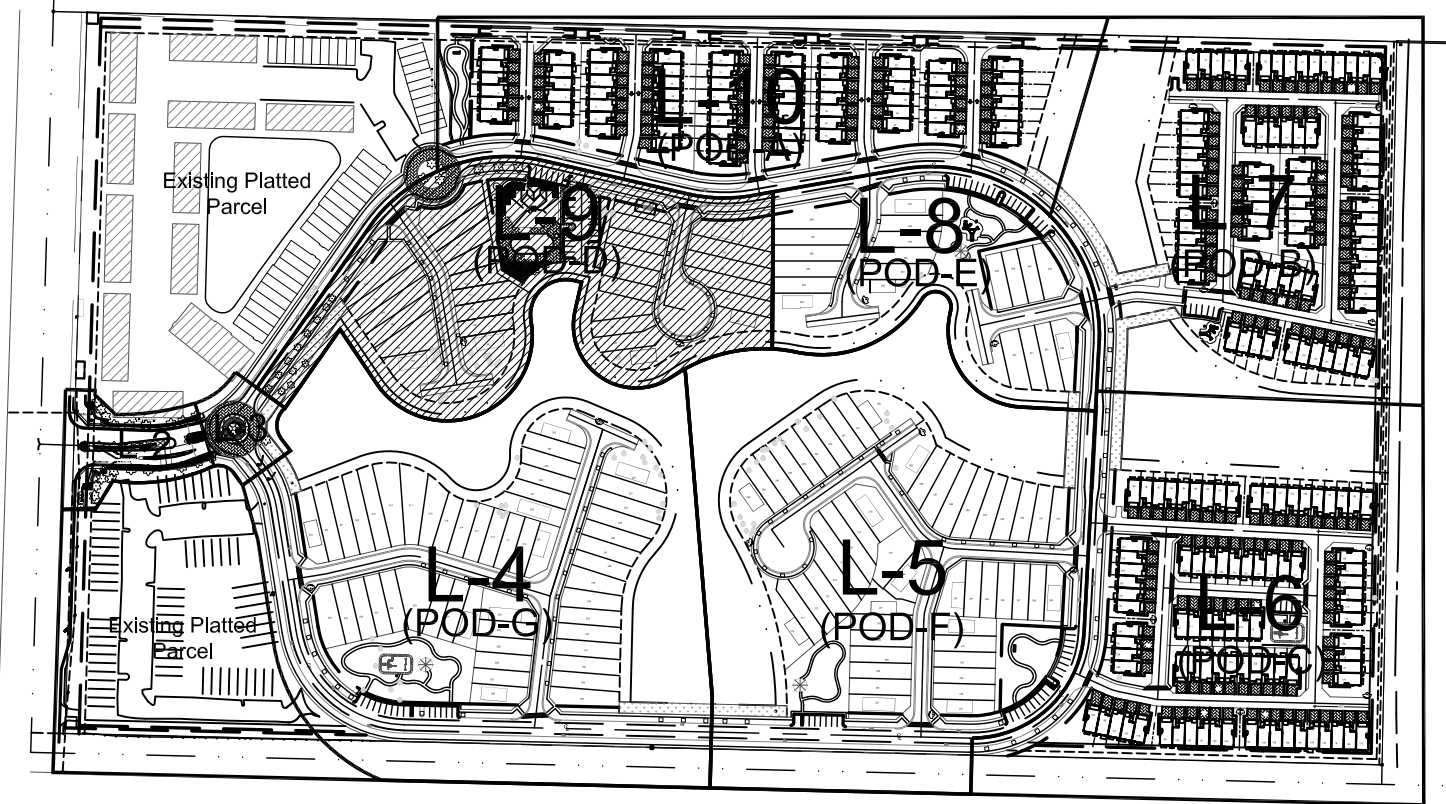


# LOCATION SKETCH

NORTH



Scale: NTS



### OVERALL LANDSCAPE LIST

TREES			
SYMBOL	QUAN	PROPOSED MATERIAL	DESCRIPTION
BA	35	BURSEEA AEROSA	12' HT. X 5' SPR. 2" DBH.
BA		VERAWOOD	F.G. 6" CLEAR TRUNK
CB	99	Calophyllum brasiliense	12' HT. X 5' SPR. 2" DBH.
CB		BRACELIAN BEAUTYLEAF	F.G. 6" CLEAR TRUNK
CD	102	*Coccoloba diversiflora	12' HT. X 5' SPR. 2" DBH.
CD		PIGEON PLUM	F.G. 6" CLEAR TRUNK
CR	30	*Clusia rosea	12' HT. X 5' SPR. 2" DBH.
CR		PITCH APPLE	F.G. 6" CLEAR TRUNK
CN	2	*Coccotheca 'Maypan'	8' OW. HEIGHT
CN		GREEN MAYPAN COCONUT PALM	F.G.
CO	23	*Conocarpus erectus	12' HT. X 5' SPR. 2" DBH.
CO		GREEN BUTTWOOD	F.G. 6" CLEAR TRUNK
CS	129	*Conocarpus erectus 'serotinus'	12' HT. X 5' SPR. 2" DBH.
CS		SILVER BUTTWOOD	F.G. 6" CLEAR TRUNK
LJ	10	Ligustrum japonicum	8' HT. X 10' SPR. MULTI TRUNK
LJ		JAPANESE PRIVET	F.G.
PS	5	Phoenix sylvestris	10' C.T.
PS		SILVER DATE PALM	F.G.
QV	27	*Quercus virginiana	12' HT. X 9' SPR. 2" DBH.
QV		LIVE OAK	F.G. 6" CLEAR TRUNK
RE	47	*Roystonea elata	20-22' O.A. HT. 6" GREYWOOD
RE		ROYAL PALM	F.G. MATCHED HTS.
SP	50	*Sabal palmato	16-20' O.A. HT. STAGGERED
SP		SABAL PALM	F.G.
TH	54	Tabebuia heterophylla	12' HT. X 5' SPR. 2" DBH.
TH		PINK TRUMPET TREE	F.G. 6" CLEAR TRUNK
VM	147	*Vachella montgomeryana 'single'	18' O.A. HT. MIN.
VM		SINGLE MONTGOMERY PALM	F.G.
VM2	8	*Vachella montgomeryana 'double'	20' O.A. HT. MIN. DOUBLE
VM2		DOUBLE MONTGOMERY PALM	F.G. STAGGERED.

SHRUBS AND GROUNDCOVERS			
SYMBOL	QUAN	PROPOSED MATERIAL	DESCRIPTION
AB	15	Alchemilla blanchetiana	36" HT. X 24" SPR.
AB		BRIGHT YELLOW BROMELIAD	10" POT
CE	2852	*Conocarpus erectus	36" HT. X 24" SPR. / 24" O.C.
CE		GREEN BUTTWOOD	7 GAL.
CG	57	*Clusia guiblera	24" HT. X 24" SPR. / 24" O.C.
CG		SMALL LEAF CLUSIA	3 GAL.
FM	560	Ficus microcarpa 'Green Island'	10" HT. X 15" SPR. / 15" O.C.
FM		GREEN ISLAND FIGUS	3 GAL.
JV	44	Jasminum volubile	24" HT. X 24" SPR. / 24" O.C.
JV		WAX JASMINE	3 GAL.
SV	1391	Schefflera arifolia	36" HT. X 24" SPR. / 24" O.C.
SV		GREEN SCHEFFLERA	3 GAL.
TF	54	*Triplaris floridana	24" HT. X 24" SPR. / 24" O.C.
TF		DWARF FAKAHATCHEE GRASS	3 GAL.
LAWN	As Required	Stenotaphrum secundatum 'Floratum'	SOLID EVEN SOD
LAWN		ST. AUGUSTINE GRASS	
BAHIA	As Required	Paspalum notatum	SOLID EVEN SOD
BAHIA		ARGENTINE BAHIA GRASS	

\* DENOTES NATIVE SPECIES

TR Tree to Remain

**Invasive Exotic Note:** All Invasive exotic plants shall be removed from the location as part of the site preparation process.

**Maintenance Note:** Landscaping shall be maintained according to the approved site plan.

**Root Barriers Note:** Landscape contractor shall use root barriers or ensure reasonable horizontal separation between plants and water and sewer lines based on plant size and or root zone expansion capacity.

WITKIN HULTS  
DESIGN GROUP  
307 South 21st Avenue Hollywood, Florida  
phone: 954.923.9681 fax: 954.923.9689  
www.witkindesign.com

**Mediterranea**  
Riviera Beach, Florida  
POD D LANDSCAPE PLAN

Revisions:	Date:	By:
11 City Comments	02/27/2016	JC
21 City Comments	10/28/2016	JC

Seat: \_\_\_\_\_  
Lic. # LA0000889  
Member: A.S.L.A.

Drawing: POD D LANDSCAPE PLAN  
Date: 02/02/2016  
Scale: See Left  
Drawn by: DC  
Sheet No.: \_\_\_\_\_  
Cad Id.: 2016-013

# LANDSCAPE PLAN

NORTH

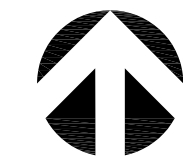


Scale: 1"=40'-0"

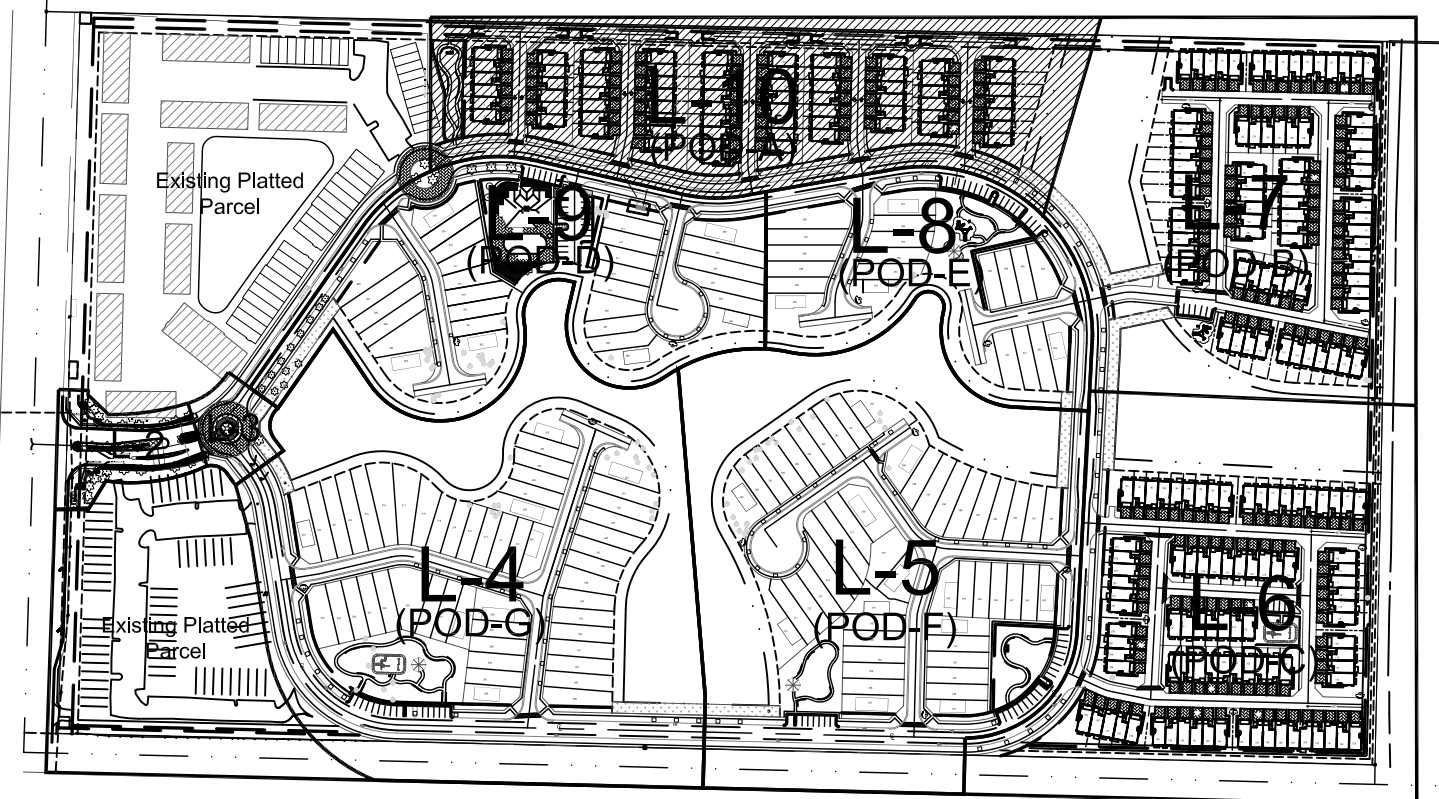
L-9

# LOCATION SKETCH

NORTH



Scale: NTS



## OVERALL LANDSCAPE LIST

TREES				
SYMBOL	QUAN.	PROPOSED MATERIAL	DESCRIPTION	IDENTIFICATION
PA	35	Bursera arborea	12 HT. X 9" SPR. 2" DBH.	SHADE TREE
PA	99	VERAWOOD	F.G. 6" CLEAR TRUNK	SHADE TREE
CB	102	BRAZILIAN BEAUTYLEAF	F.G. 6" CLEAR TRUNK	SHADE TREE
CD	30	"Coccoloba diversiflora	12 HT. X 9" SPR. 2" DBH.	SHADE TREE
CD	30	"Chala rosea	F.G. 6" CLEAR TRUNK	SHADE TREE
CR	2	FITCH APPLE	F.G. 6" CLEAR TRUNK	SHADE TREE
CN	23	Coconut	8" GW. HEIGHT	3 PALMS TO 1 SHADE TREE
CO	129	GREEN MAYPAIN COCONUT PALM	F.G.	SHADE TREE
CO	23	"Conocarpus erectus	12 HT. X 9" SPR. 2" DBH.	SHADE TREE
CS	23	GREEN BUTTWOOD	F.G. 6" CLEAR TRUNK	SHADE TREE
CS	129	"Conocarpus erectus 'serotinus'	12 HT. X 9" SPR. 2" DBH.	SHADE TREE
LI	10	SILVER BUTTWOOD	F.G. 6" CLEAR TRUNK	SHADE TREE
LI	10	Ligustrum japonicum	9 HT. X 10" SPR. MULTI TRUNK	ACCENT TREE
LI	10	JAPANESE PRIVET	F.G.	ACCENT TREE
PS	5	PHOENIX SYLVESTRIS	10" C.T.	3 PALMS TO 1 SHADE TREE
PS	5	SILVER DATE PALM	F.G.	3 PALMS TO 1 SHADE TREE
QV	47	"Quercus virginiana	12 HT. X 9" SPR. 2" DBH.	SHADE TREE
QV	47	LIVE OAK	F.G. 6" CLEAR TRUNK	SHADE TREE
RE	27	"Ravensara elata	20-22 O.A. HT. 6" GREYWOOD	3 PALMS TO 1 SHADE TREE
RE	27	ROYAL PALM	F.G. MATCHED HTS.	1 SHADE TREE
SP	50	"Sabal palmetto	16-20 O.A. HT. STAGGERED	3 PALMS TO 1 SHADE TREE
SP	50	SABAL PALM	F.G.	1 SHADE TREE
TH	54	"Tabebuia heterophylla	12 HT. X 9" SPR. 2" DBH.	SHADE TREE
TH	54	PINK TRUMPET TREE	F.G. 6" CLEAR TRUNK	SHADE TREE
VM	147	Valleha montgomeryana 'single'	18" O.A. HT. MIN.	3 PALMS TO 1 SHADE TREE
VM	147	Valleha montgomeryana 'double'	F.G.	3 PALMS TO 1 SHADE TREE
VM	8	DOUBLE MONTGOMERY PALM	24" O.A. HT. MIN. DOUBLE	3 PALMS TO 1 SHADE TREE
VM	8	DOUBLE MONTGOMERY PALM	F.G. STAGGERED	3 PALMS TO 1 SHADE TREE

SHRUBS AND GROUNDCOVERS			
SYMBOL	QUAN.	PROPOSED MATERIAL	DESCRIPTION
AB	15	Aechmea blanchetiana	36" HT. X 24" SPR.
AB	15	BRIGHT YELLOW BROMELIAD	10" POT
CE	2852	"Conocarpus erectus	36" HT. X 24" SPR. 24" O.C.
CE	2852	GREEN BUTTWOOD	7 GAL.
CG	57	"Clusia guilleria	24" HT. X 24" SPR. / 24" O.C.
CG	57	SMALL LEAF CLUSIA	3 GAL.
FM	560	Ficus microcarpa 'Green Island'	19" HT. X 15" SPR. / 15" O.C.
FM	560	GREEN ISLAND FIGUS	3 GAL.
JV	44	Jasminum vulgare	24" HT. X 24" SPR. / 24" O.C.
JV	44	WAX JASMINE	3 GAL.
SV	1391	Schefflera arborescens	36" HT. X 24" SPR. / 24" O.C.
SV	1391	GREEN SCHEFFLERA	3 GAL.
TF	54	"Tropaeolum bahianum	24" HT. X 24" SPR. / 24" O.C.
TF	54	DWARF FAKAHATCHEE GRASS	3 GAL.
LAWN	As Required	Stenotaphrum secundatum 'Koratam'	SOLID EVEN SOO
LAWN	As Required	ST. AUGUSTINE GRASS	SOLID EVEN SOO
BAHIA	As Required	Paepalum notatum	SOLID EVEN SOO
BAHIA	As Required	SILVER CENTRE BANANA GRASS	SOLID EVEN SOO

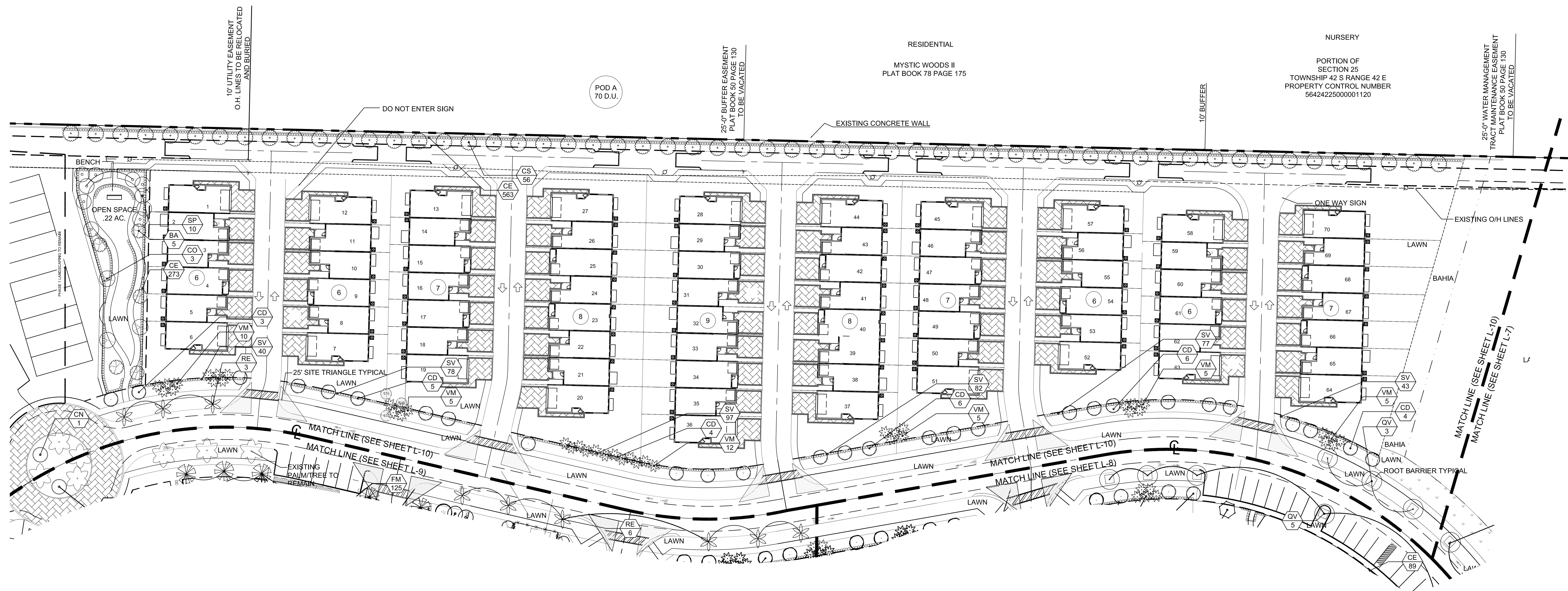
\* DENOTES NATIVE SPECIES

Tree to Remain

**Invasive Exotic Note:** All Invasive exotic plants shall be removed from the location as part of the site preparation process.

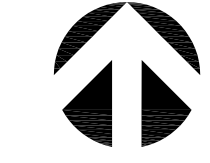
**Maintenance Note:** Landscaping shall be maintained according to the approved site plan.

**Root Barriers Note:** Landscape contractor shall use root barriers or ensure reasonable horizontal separation between plants and water and sewer lines based on plant size and or root zone expansion capacity.



# LANDSCAPE PLAN

NORTH



Scale: 1"=40'-0"

**WITKIN HULTS DESIGN GROUP**  
 307 South 21st Avenue Hollywood, Florida  
 phone: 954.923.9681 fax: 954.923.9689  
 www.witkindesign.com

**Mediterranea**  
 Riviera Beach, Florida  
 POD A LANDSCAPE PLAN

Revisions:	Date:	By:
11 City Comments	02/27/2016	DC
21 City Comments	10/28/2016	DC

Seat: \_\_\_\_\_  
 Lic. # LA0000889  
 Member: A.S.L.A.

Drawing: POD A LANDSCAPE PLAN  
 Date: 02/02/2016  
 Scale: See Left  
 Drawn by: DC  
 Sheet No.: \_\_\_\_\_  
 Cad Id.: 2016-013